

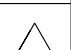


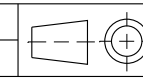
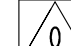
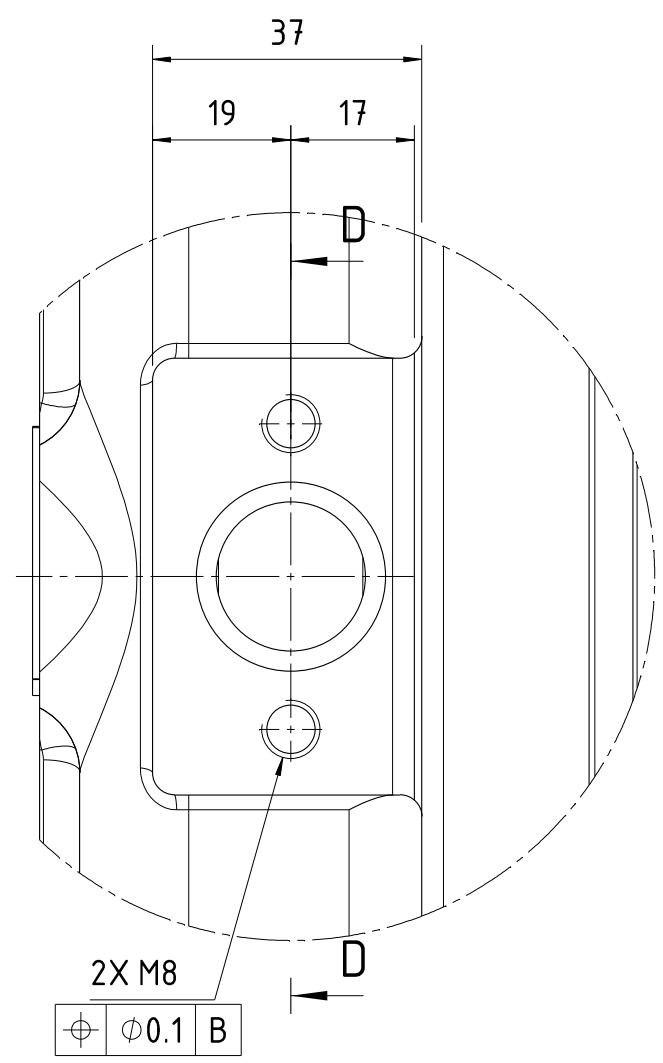
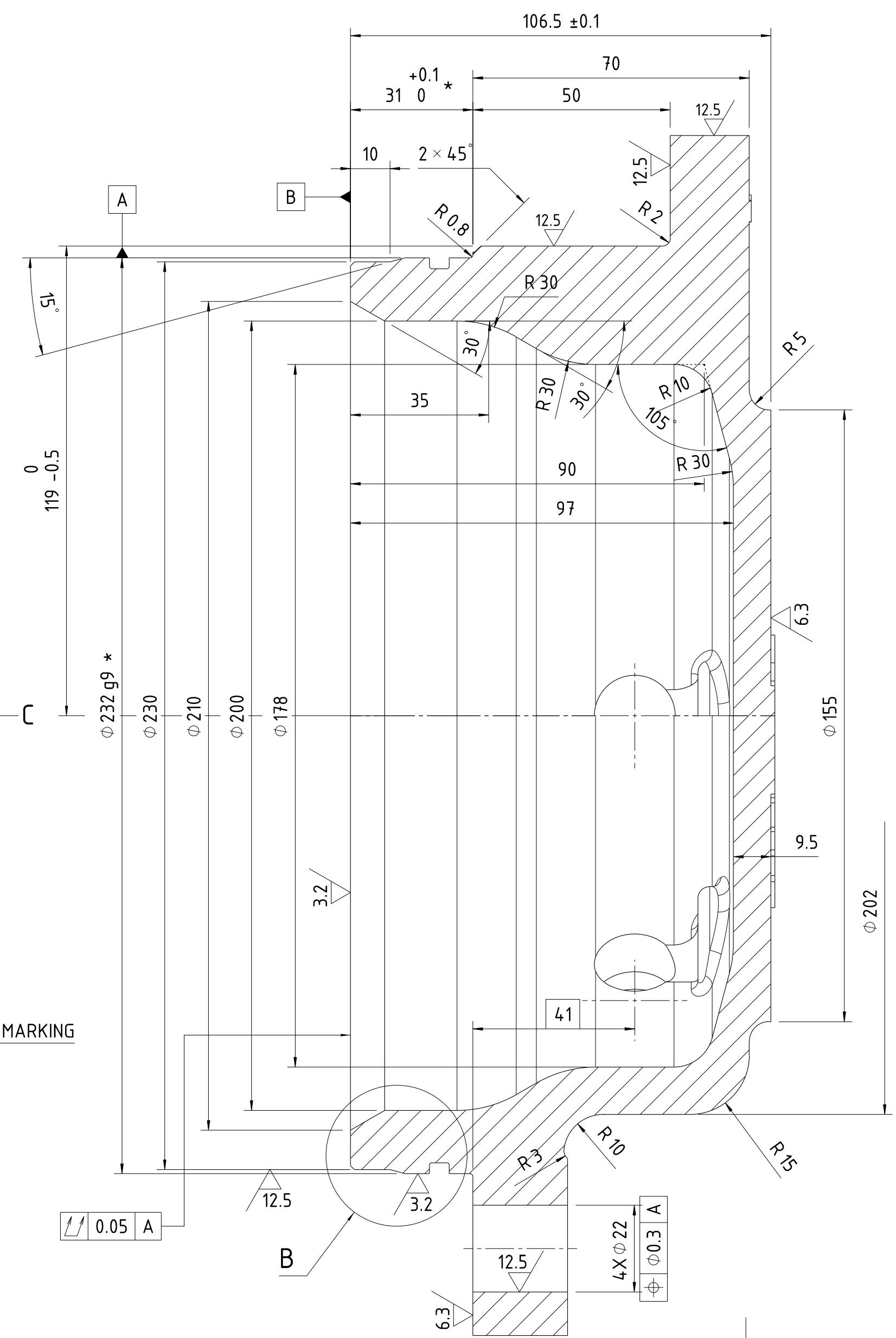
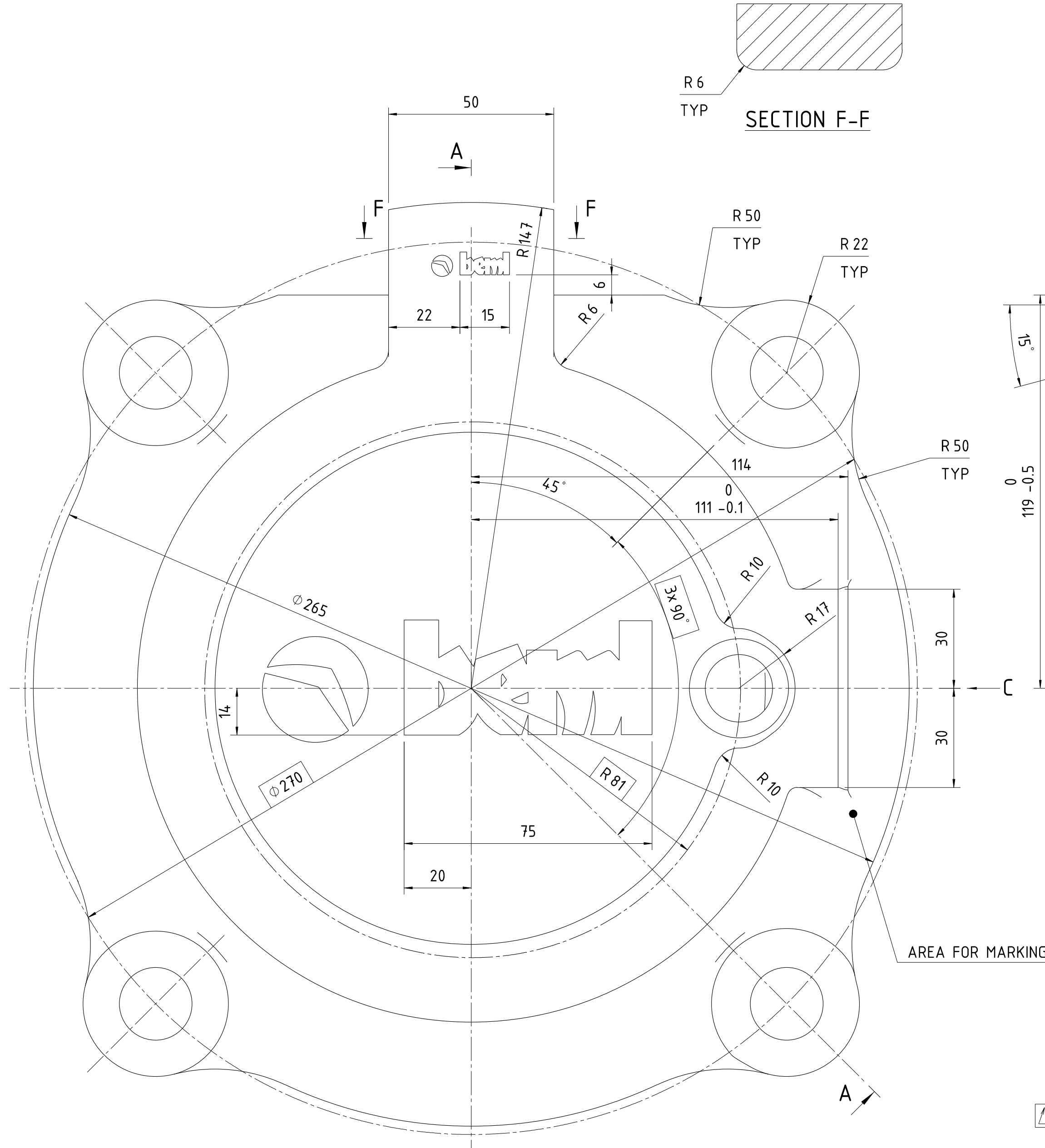


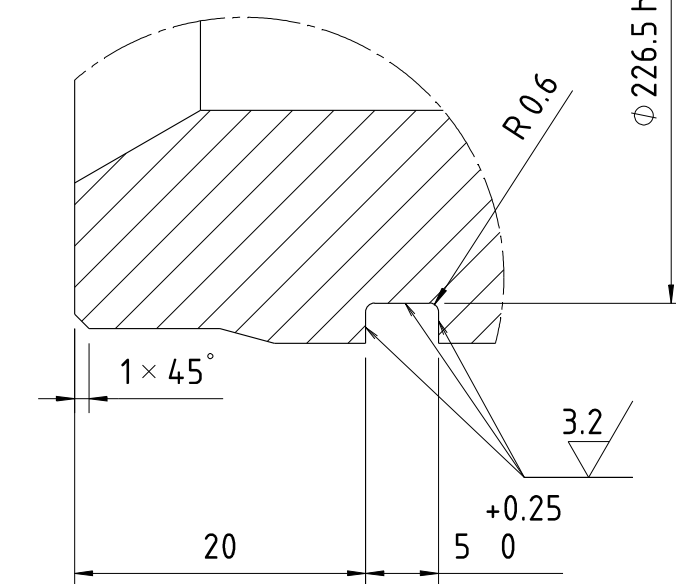
SL No.	QTY	PART / STOCK No.			DESCRIPTION			SIZE	COMPANY STD./S		Wt. (kg)
									MATERIAL		
					PRODUCT	MUMBAI METRO CARS L2 & L7					
					REF. DRG						
					MATERIAL	EN-GJS-400-15 OF EN 1563					
					HEAT TREAT						
					SURFACE TREAT						
					TITLE						
						COVER WSP					
ALT. NO.	ECN NO./CHANGES		DATE	BY	CHKD	APPROD	 BEAML LIMITED <small>BEAM LIGHTING SOLUTIONS</small>		 SHEET 1 OF 1		WH 13.00 kg ALT 
							525-81103				



SECTION D-D



SECTION A-A



DETAIL B
(2:1)

* : IMPORTANT PARAMETER

- NOTES:**
- 1 CONSIDER R3 FOR UNSPECIFIED RADIUS ON CASTING.
 - 2 SCREW MACHINING SHOULD BE DONE ACCORDING TO ISO 261 NORMAL GRADE OR ABOVE.
 - 3 DEVIATIONS ON UNTOLERENCED CAST DIMENSIONS SHALL BE TO IS:4897-1994, CLASS-2.
 - 4 EMBOSS IN 10mm HIGH, 15mm RAISED LETTERS PART No., VENDOR CODE, MONTH & YEAR OF MFG, HEAT No., & SL. No., ON THE CASTING AS SHOWN IN THE DWG.
 - 5 MANUFACTURER MUST FURNISH TEST CERTIFICATES FOR CHEMICAL COMPOSITION & MECHANICAL PROPERTIES FOR EACH BATCH OF SUPPLY.
 - 6 THE MACHINED SURFACE SHALL BE COATED WITH RUST PREVENTIVE FLUID TO IS: 1154-2000.
 - 7 OUTSIDE: TO BE PAINTED ACCORDING TO PAINTING MENTIONED IN BEML PTS DOC No. GR/TD/4637 EXCEPT MACHINED SURFACES.
 - 8 FAI: ONE No. OF FINISH MACHINED SAMPLE SHALL BE SUPPLIED FREE ALONG WITH ALL MECHANICAL & MECHANICAL TEST REPORTS & DIMENSION CHECK SHEETS FOR EACH BATCH OF SUPPLY FOR APPROVAL BY BEML BEFORE BULK PRODUCTION.
 - 9 THE CASTINGS SHALL CONFORM TO BEML PTS DOC. No. GR/TD/4637.
 - 10 Moulding Tooling Definition & Draft Values must comply with this standard for SG-IRON OBTAINED BY SAND CASTING AS PER EN 12890
 - 11 REMOVE ALL SHARP EDGES AS BURRS AND CLEAN THE PARTS.
 - 12 DIAMETER CONCENTRICITY OF 0.10 TO BE MAINTAINED
 - 13 PERPENDICULARITY OF 0.10 TO BE MAINTAINED W.R.T. DIAMETERS
 - 14 PARALLELISM OF 0.10 TO BE MAINTAINED W.R.T. AXIS LINE
 - 15a CAST/EMBOSSMENT OF BEML LOGO AS PER BEML STANDARD DS 1019-C. COPY OF THE EXTRACT TO BE SHARED WITH THE VENDOR.
 - 15b LOGO LENGTH SHALL BE L=15mm(at the top-1 place) AT DEPTH OF 0.5mm & L=75mm (at centre) AT DEPTH OF 1mm.

