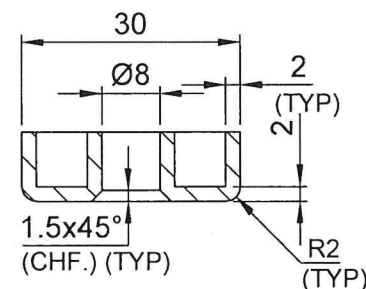
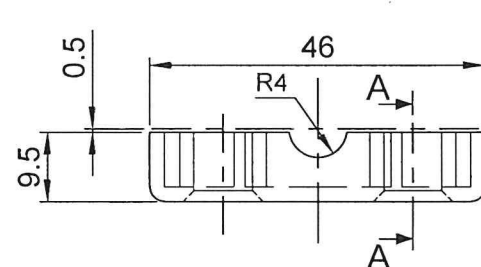
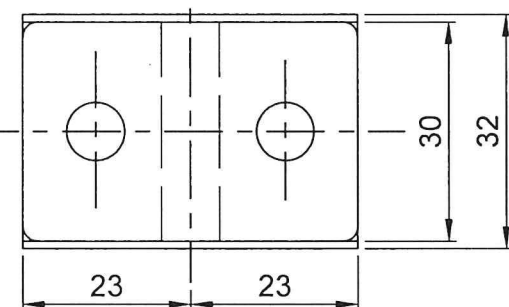
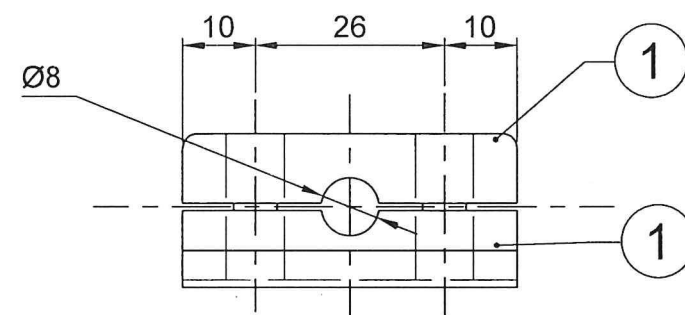
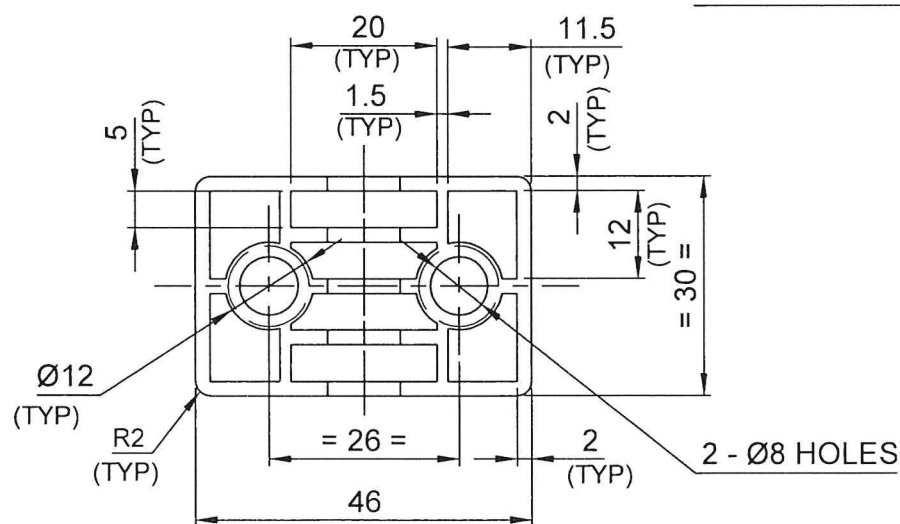


COPY RIGHT & CONFIDENTIAL THIS DOCUMENT IS THE EXCLUSIVE PROPERTY OF BEML & CONTAINS CONFIDENTIAL INFORMATION. THIS DOCUMENT OR ITS CONTENTS SHALL NOT BE USED, REPRODUCED OR DISCLOSED IN WHOLE OR IN PART, WITHOUT PRIOR WRITTEN PERMISSION OF BEML. THIS DOCUMENT & ALL ITS COPIES SHALL BE RETURNED TO BEML ON DEMAND. DRAWING RELEASED FROM PLM, PHYSICAL SIGNATURE NOT REQUIRED

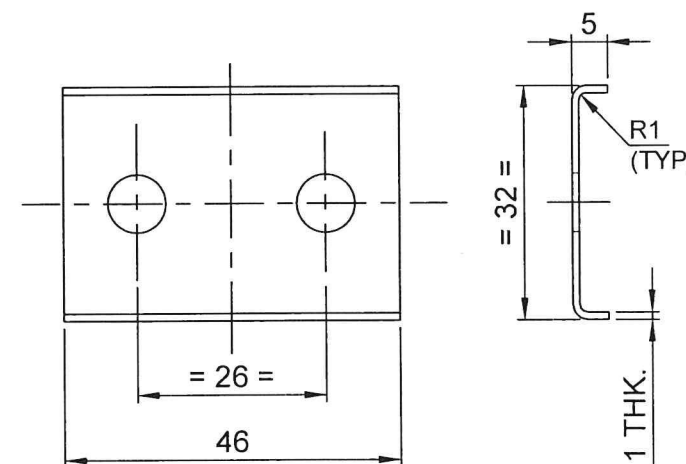
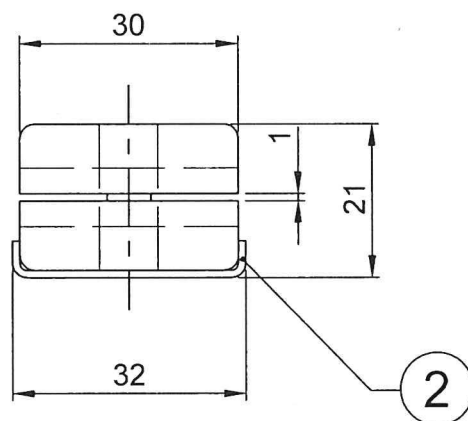
GRADE No.	VALUE	SYMBOL
N1	0.025	
N2	0.05	
N3	0.1	
N4	0.2	
N5	0.4	
N6	0.8	
N7	1.6	
N8	3.2	
N9	6.3	
N10	12.5	
N11	25	
N12	50	
SURFACE ROUGHNESS		



SECTION A-A



DETAIL-01



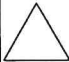
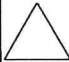
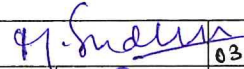




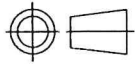

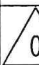
DETAIL-02

MACHINING DEVIATIONS FOR LINEAR DIMENSIONS	RANGE	0 - 6	6 - 30	30 - 120	120 - 315	315-1000	1000-2000	2000-4000	ABOVE 4000	RA
	TOLERANCE	±0.1	±0.2	±0.3	±0.5	±0.8	±1.2	±2	±3	~
FOR DIMENSIONAL TOLERANCES OF SHEET METAL PARTS AND WELDED STRUCTURES, REFER STD. RD-227										
UNSPECIFIED TOLERANCE FOR LINEAR AND ANGULAR DIMENSIONS REF. IS 2102 (PT-1) (MEDIUM)							QUALITY OF WELD JOINTS REF. RD 230 MEDIUM			
VALUES OF SURFACE TEXTURE SHALL BE AS PER COMPANY STD DS. 1012.C.						STATUS: <div>MOCKUP/PROTO/PRODUCTION</div>				
WELDING SHALL BE CARRIED OUT AS PER IS: 9595-96										

NOTES:-

1. REMOVE ALL SHARP EDGES & BURRS.
2. CLEAT SHALL BE FIRE RETARDANT TO V-0 GRADE OF UL - 94

UN CONTROLLED COPY

2	1					PLATE		46x38x1 THK.		AISI 304	
1	1SET					CLEAT		46x30x9.5		NYLON 6	
SL.No.	QTY	PART / STOCK No.				DESCRIPTION		SIZE		COMPANY STD./I.S	Wt. (Kg)
										MATERIAL	
						PRODUCT	BMRCL METRO CARS				
						REF DRG					
						MATERIAL					
						HEAT TREAT.		APPD	MS		03.03.20
						SURFACE TREAT.		REVD	DB		02.03.20
						TITLE		CHKD	JC		29.02.20
						CLEAT ASS'Y		DRWN	ILYAS		
								SCALE		SHEET	Wt.(Kg)
								1:1		1 OF 1	-
ALT.No.	ECN NO/CHANGES		DATE	BY	CHKD	APPD	 Beml <small>NEW FRONTIERS NEW DREAMS</small> BEML LIMITED		DRG No.		ALT
									926-60424		



BEML LIMITED

926-60424