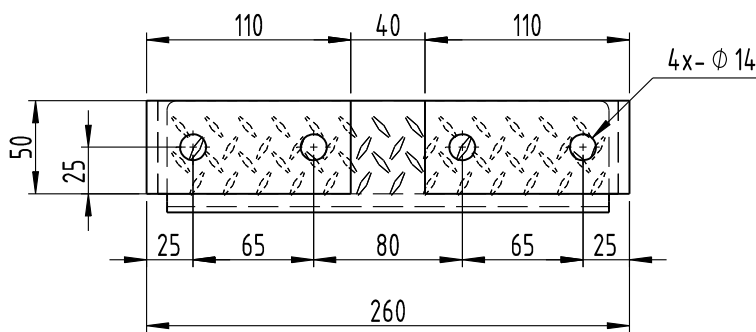
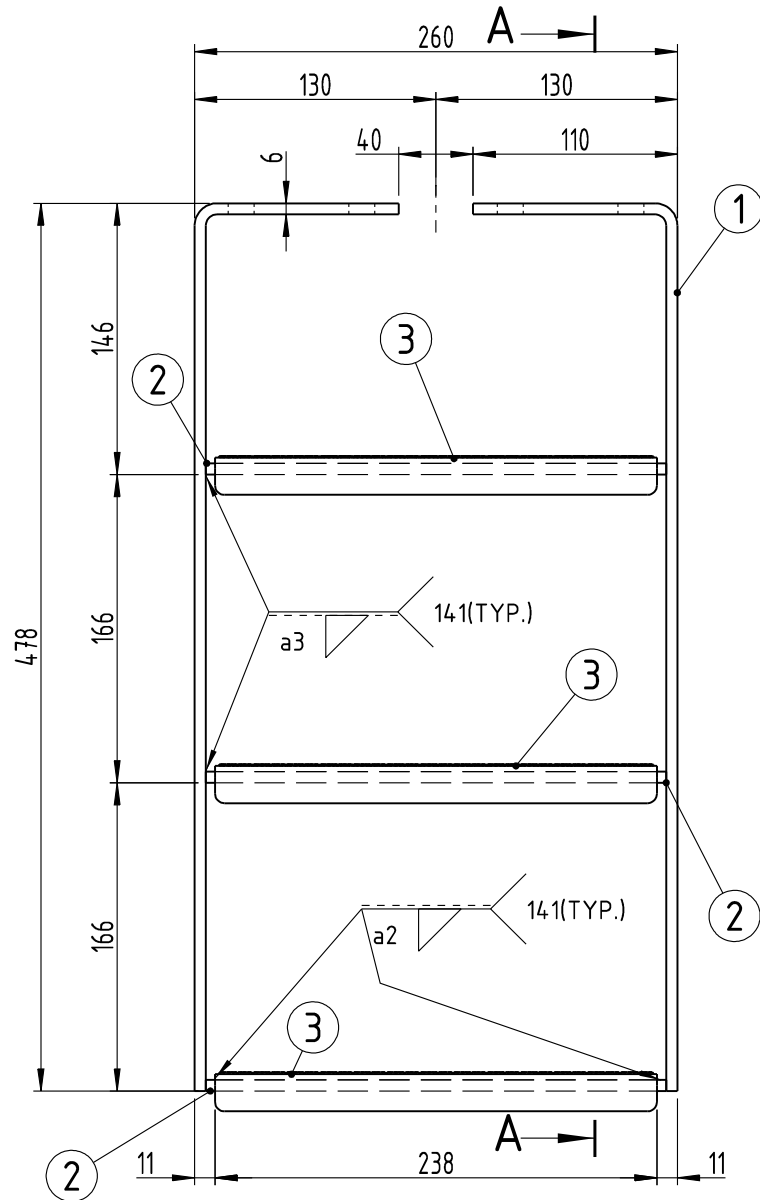
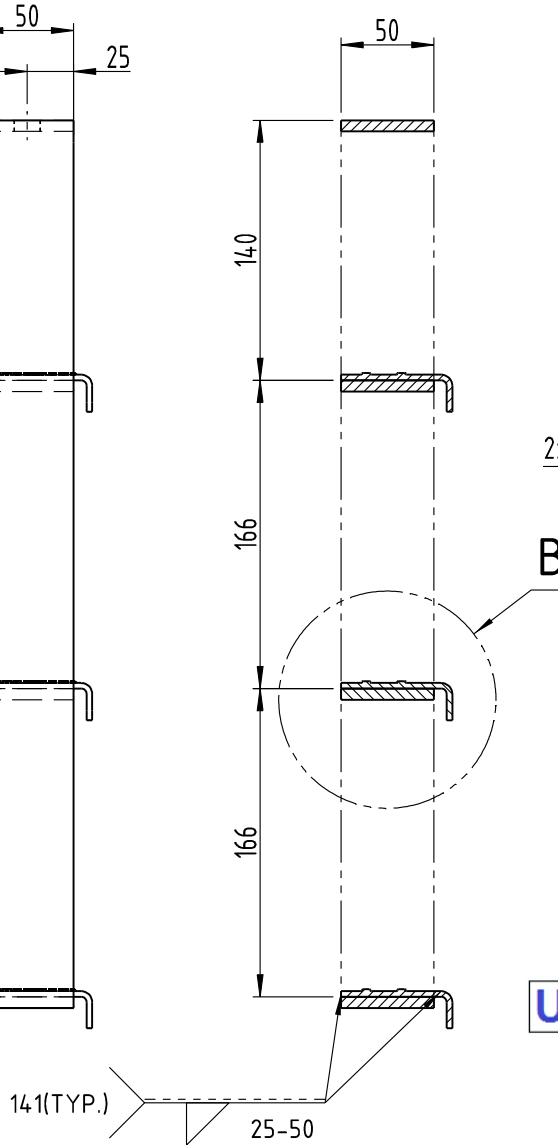


COPY RIGHT & CONFIDENTIAL THIS DOCUMENT IS THE EXCLUSIVE PROPERTY OF BEML & CONTAINS CONFIDENTIAL INFORMATION. THIS DOCUMENT OR ITS CONTENTS SHALL NOT BE USED, REPRODUCED OR DISCLOSED IN WHOLE OR IN PART, WITHOUT PRIOR WRITTEN PERMISSION OF BEML. THIS DOCUMENT & ALL ITS COPIES SHALL BE RETURNED TO BEML ON DEMAND DRAWING RELEASED FROM PLM, PHYSICAL SIGNATURE NOT REQUIRED

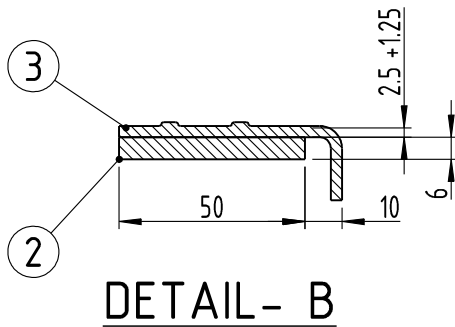
GRADE No.	VALUE	SYMBOL	N1	N2	N3	N4	N5	N6	N7	N8	N9	N10	N11	N12
			0.025	0.05	0.1	0.2	0.4	0.8	1.6	3.2	6.3	12.5	25	50
SURFACE														
ROUGHNESS														



- NOTE:
1. ALL DIMENSIONS ARE IN mm.
  2. REMOVE ALL SHARP EDGES & BURRS.
  3. THE WELDING SYMBOLS ARE IN ACCORDANCE WITH ISO:2553.
  4. THE WELDS SHALL BE GROUND FINISHED.
  5. WELD AREAS SHALL BE PICKLED AND PASSIVATED.
  6. ITEM-3 CHEQUERED PLATE SHALL COMPLY TO IS : 3502, CHEQUERED PATTERN -1C.
  7. THE EXTERIOR FOOT STEP SHALL CONFORM TO TDC DOC. NO. GR/TD/5014.
  8. THE EXTERIOR FOOT STEP SHALL BE APPROVED BEFORE BULK PRODUCTION.

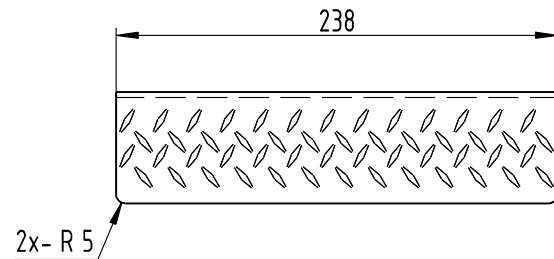


SECTION A-A

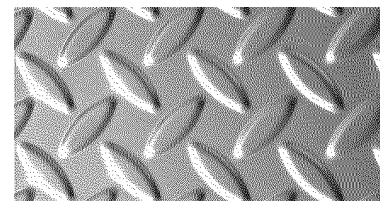


DETAIL- B

MACHINING DEVIATIONS FOR LINEAR DIMENSIONS	RANGE	0 - 6	6 - 30	30 - 120	120 - 315	315-1000	1000-2000	2000-4000	ABOVE 4000	RA
	TOLERANCE	±0.1	±0.2	±0.3	±0.5	±0.8	±1.2	±2	±3	~
FOR DIMENSIONAL TOLERANCES OF SHEET METAL PARTS AND WELDED STRUCTURES, REFER STD. RD-227										
UNSPECIFIED TOLERANCE FOR LINEAR AND ANGULAR DIMENSIONS REF. IS 2102 (PT-1) (MEDIUM)							QUALITY OF WELD JOINTS REF, RD 230 MEDIUM			
VALUES OF SURFACE TEXTURE SHALL BE AS PER COMPANY STD DS. 1012.C.							STATUS:	PROTO/PRODUCTION		
WELDING SHALL BE CARRIED OUT AS PER IS: 9595-96										

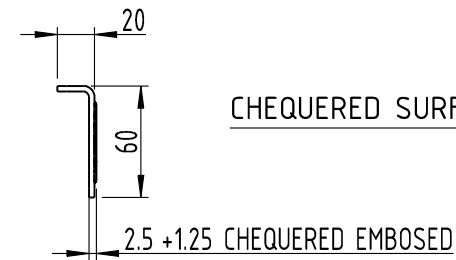


DETAIL-3

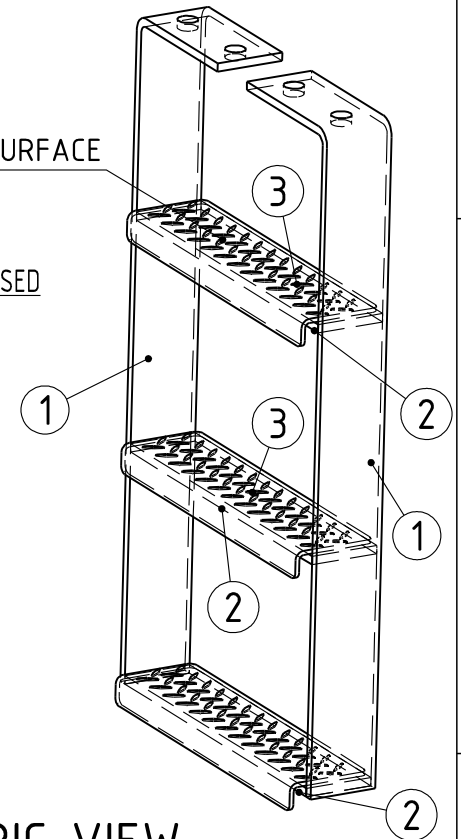


CHEQUERED PATTERN


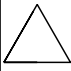


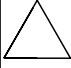
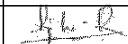
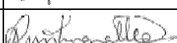
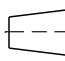

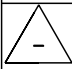

UN CONTROLLED



CHEQUERED SURFACE



ISOMETRIC VIEW

3	3	525-39110-03	STRIP(CHEQUERED PLATE)			238x60x20, 2.5t+1.25t(EMBOSED)		SUS304/AISI304 IS : 3502, PATTERN-1C			
2	3	525-39110-02	STRIP			248x50x6t		SUS304/AISI304 2B FINISH			
1	2	525-39110-01	FRAME			576x50x6t		SUS304/AISI304 2B FINISH			
SL.No.	QTY	PART / STOCK No.	DESCRIPTION			SIZE	COMPANY STD./I.S		Wt. (Kg)		
							MATERIAL				
						PRODUCT	MUMBAI METRO CARS - L2 & L7				
						REF DRG					
						MATERIAL	SUS304/AISI304				
						HEAT TREAT.		APPD		12.03.2020	
						SURFACE TREAT.		REVD		12.03.2020	
						TITLE		CHKD		12.03.2020	
						EXTERIOR FOOT STEP		DRWN		12.03.2020	
							SCALE			SHEET	Wt.
							1:4			1 OF 1	-
						DRG No.				ALT	
						525-39110					
ALT.No.	ECN NO/CHANGES		DATE	BY	CHKD	APPD	 <b>BEML LIMITED</b> <small>NEW FRONTIERS. NEW DREAMS</small>				

BEML LIMITED

525-39110



A3