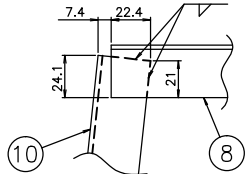
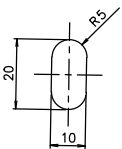


MACHINING DEVIATIONS	RANGE	0 - 6	6 - 30	30 - 120	120 - 315	315-1000	1000-2000	2000-4000	ABOVE 4000
FOR LINEAR DIMENSIONS	TOLERANCE	±0.1	±0.2	±0.3	±0.5	±0.8	±1.2	±2	±3
FOR DIMENSIONAL TOLERANCES OF SHEET METAL PARTS AND WELDED STRUCTURES, REFER STD. RD-227									
UNSPECIFIED TOLERANCE FOR LINEAR AND ANGULAR DIMENSIONS REF. IS 2102 (PT-1) (MEDIUM)									
VALUES OF SURFACE TEXTURE SHALL BE AS PER COMPANY STD DS. 1012.C.									
QUALITY OF WELD JOINTS REF. ISO: 5817									

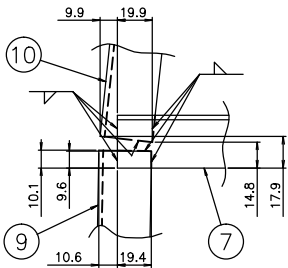
UNCONTROLLED



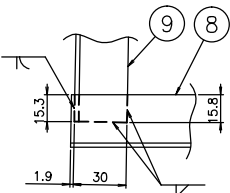
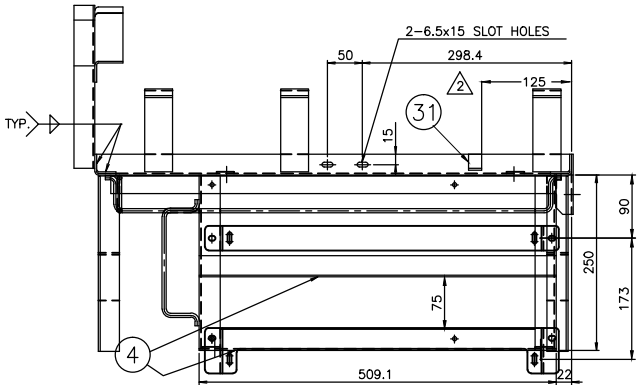
DETAIL E
(SCALE:1/2)



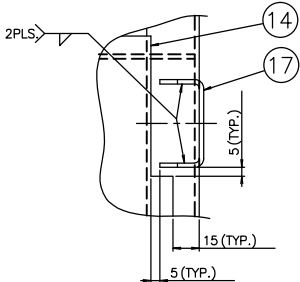
VIEW H
(SCALE:1/1)



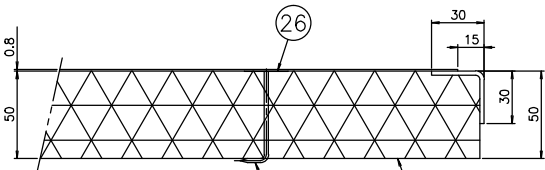
DETAIL F
(SCALE:1/2)



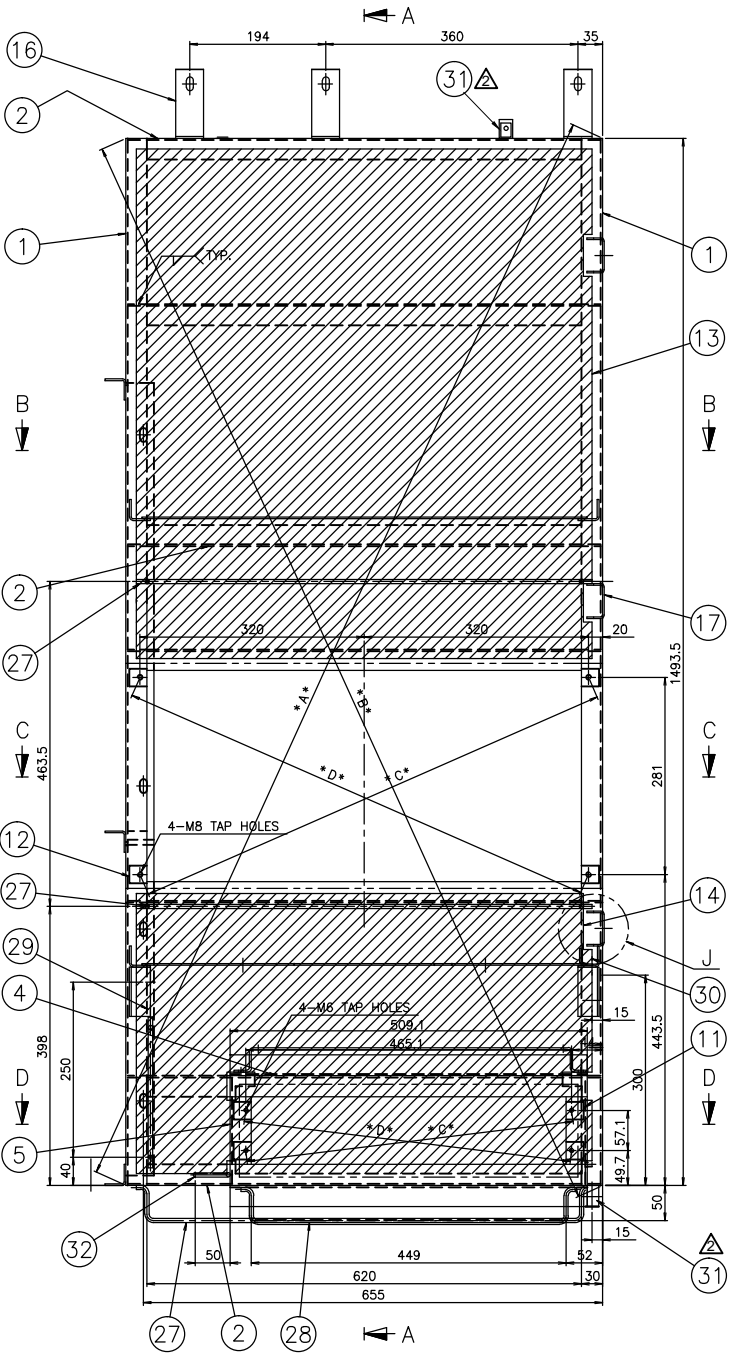
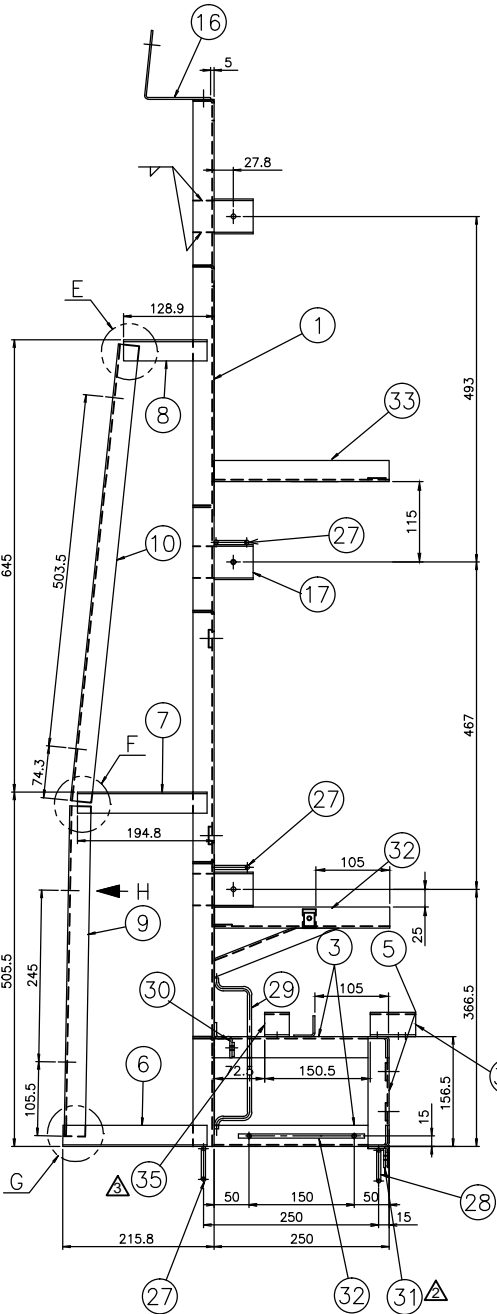
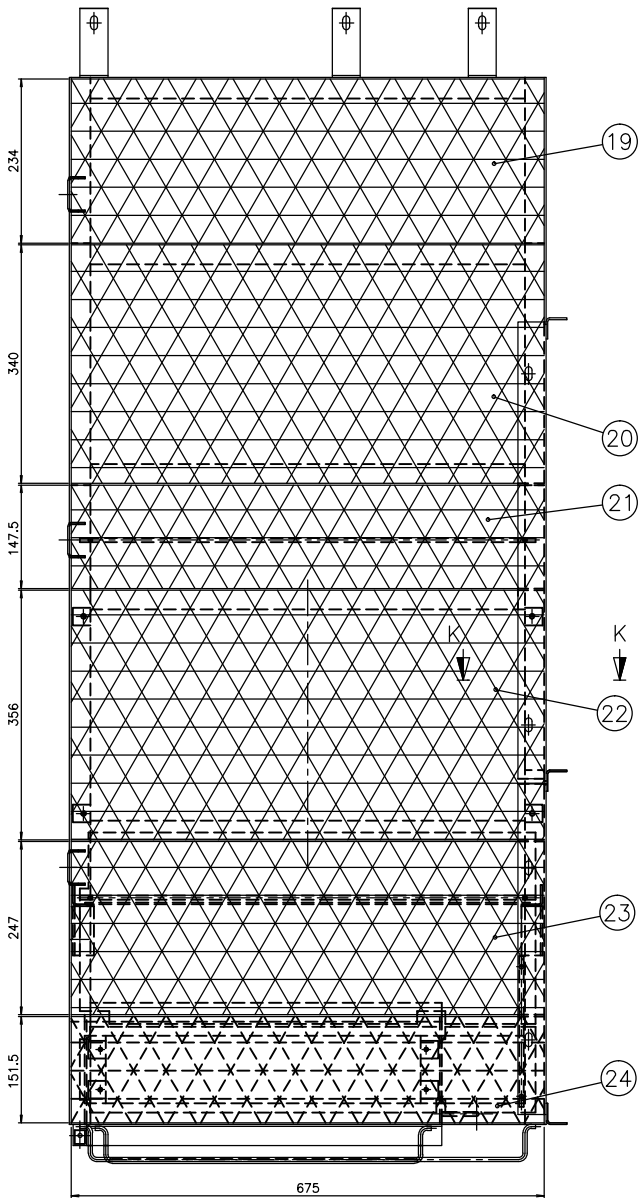
DETAIL G
(SCALE:1/2)



DETAIL J
(SCALE:1/2)

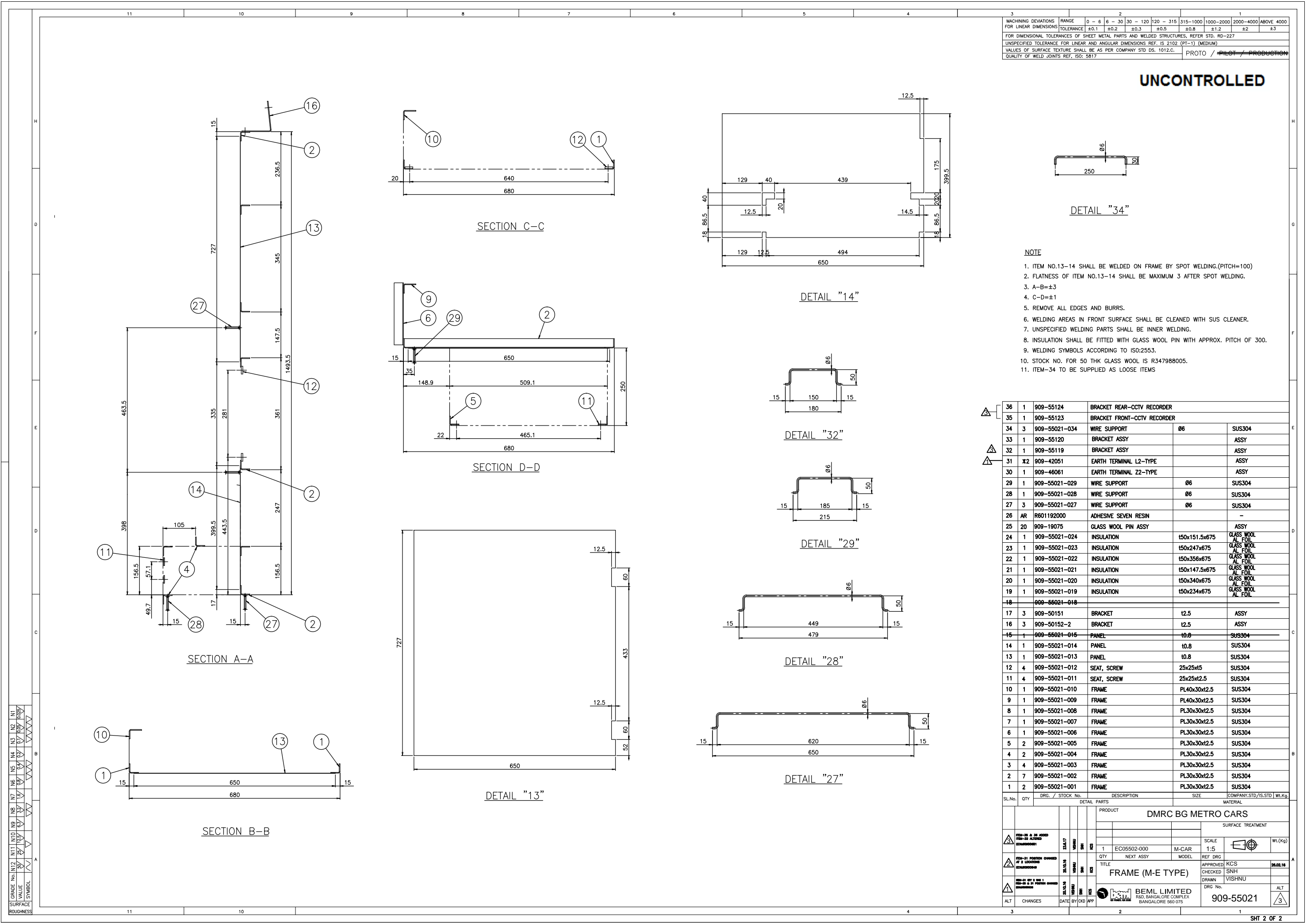


SECTION K-K
(SCALE:1/2)



SL.No.	QTY	DRG. / STOCK No.	DESCRIPTION	SIZE	COMPANY STD./S.STD	Wt.(Kg)
DETAIL PARTS						
PRODUCT						
DMRC BG METRO CARS						
SURFACE TREATMENT						
SCALE 1:5						
M-CAR						
REF DRG						
APPROVED KCS						
CHECKED SNH						
DRAWN VISHNU						
DRG No.						
909-55021						
ALT						
3						

GRADE No.	N1	N2	N3	N4	N5	N6	N7	N8	N9	N10	N11	N12
VALUE	100	100	100	100	100	100	100	100	100	100	100	100
SYMBOL												
ROUGHNESS												



		2				1			
MACHINING DEVIATIONS		RANGE	0 - 6	6 - 30	30 - 120	120 - 315	315-1000	1000-2000	2000-4000
FOR LINEAR DIMENSIONS		TOLERANCE	±0.1	±0.2	±0.3	±0.5	±0.8	±1.2	±2
FOR DIMENSIONAL TOLERANCES OF SHEET METAL PARTS AND WELDED STRUCTURES, REFER STD. RD-227									
UNSPECIFIED TOLERANCE FOR LINEAR AND ANGULAR DIMENSIONS REF. IS 2102 (PT-1) (MEDIUM)									
VALUES OF SURFACE TEXTURE SHALL BE AS PER COMPANY STD DS. 1012.C.									
QUALITY OF WELD JOINTS REF. ISO: 5817									

UNCONTROLLED

DETAIL "34"

- NOTE
- 1. ITEM NO.13-14 SHALL BE WELDED ON FRAME BY SPOT WELDING.(PITCH=100)
 - 2. FLATNESS OF ITEM NO.13-14 SHALL BE MAXIMUM 3 AFTER SPOT WELDING.
 - 3. A-B=±3
 - 4. C-D=±1
 - 5. REMOVE ALL EDGES AND BURRS.
 - 6. WELDING AREAS IN FRONT SURFACE SHALL BE CLEANED WITH SUS CLEANER.
 - 7. UNSPECIFIED WELDING PARTS SHALL BE INNER WELDING.
 - 8. INSULATION SHALL BE FITTED WITH GLASS WOOL PIN WITH APPROX. PITCH OF 300.
 - 9. WELDING SYMBOLS ACCORDING TO ISO:2553.
 - 10. STOCK NO. FOR 50 THK GLASS WOOL IS R347988005.
 - 11. ITEM-34 TO BE SUPPLIED AS LOOSE ITEMS

36	1	909-55124	BRACKET REAR-CCTV RECORDER			
	35	1	909-55123	BRACKET FRONT-CCTV RECORDER		
34	3	909-55021-034	WIRE SUPPORT	Ø6	SUS304	
33	1	909-55120	BRACKET ASSY		ASSY	
32	1	909-55119	BRACKET ASSY		ASSY	
31	X2	909-42051	EARTH TERMINAL L2-TYPE		ASSY	
30	1	909-46061	EARTH TERMINAL Z2-TYPE		ASSY	
29	1	909-55021-029	WIRE SUPPORT	Ø6	SUS304	
28	1	909-55021-028	WIRE SUPPORT	Ø6	SUS304	
27	3	909-55021-027	WIRE SUPPORT	Ø6	SUS304	
26	AR	R601192000	ADHESIVE SEVEN RESIN		-	
25	20	909-19075	GLASS WOOL PIN ASSY		ASSY	
24	1	909-55021-024	INSULATION	t50x151.5x675	GLASS WOOL AL FOIL	
23	1	909-55021-023	INSULATION	t50x247x675	GLASS WOOL AL FOIL	
22	1	909-55021-022	INSULATION	t50x356x675	GLASS WOOL AL FOIL	
21	1	909-55021-021	INSULATION	t50x147.5x675	GLASS WOOL AL FOIL	
20	1	909-55021-020	INSULATION	t50x340x675	GLASS WOOL AL FOIL	
19	1	909-55021-019	INSULATION	t50x234x675	GLASS WOOL AL FOIL	
18		909-55021-018				
17	3	909-50151	BRACKET	t2.5	ASSY	
16	3	909-50152-2	BRACKET	t2.5	ASSY	
15	1	909-55021-015	PANEL	t0.8	SUS304	
14	1	909-55021-014	PANEL	t0.8	SUS304	
13	1	909-55021-013	PANEL	t0.8	SUS304	
12	4	909-55021-012	SEAT, SCREW	25x25x5	SUS304	
11	4	909-55021-011	SEAT, SCREW	25x25x2.5	SUS304	
10	1	909-55021-010	FRAME	PL40x30x12.5	SUS304	
9	1	909-55021-009	FRAME	PL40x30x12.5	SUS304	
8	1	909-55021-008	FRAME	PL30x30x12.5	SUS304	
7	1	909-55021-007	FRAME	PL30x30x12.5	SUS304	
6	1	909-55021-006	FRAME	PL30x30x12.5	SUS304	
5	2	909-55021-005	FRAME	PL30x30x12.5	SUS304	
4	2	909-55021-004	FRAME	PL30x30x12.5	SUS304	
3	4	909-55021-003	FRAME	PL30x30x12.5	SUS304	
2	7	909-55021-002	FRAME	PL30x30x12.5	SUS304	
1	2	909-55021-001	FRAME	PL30x30x12.5	SUS304	
SL.No.	QTY	DRG. / STOCK No.	DESCRIPTION		SIZE	COMPANY STD./S.STD Wt.(Kg)
DETAIL PARTS						
PRODUCT						
DMRC BG METRO CARS						
SURFACE TREATMENT						
1 ECO5502-000 M-CAR SCALE 1:5						
QTY NEXT ASSY MODEL REF DRG						
TITLE APPROVED KCS						
FRAME (M-E TYPE) CHECKED SNH 26.02.16						
DRAWN VISHNU						
DRG No.						
909-55021						
ALT	CHANGES	DATE	BY	CHK	APP	
BEMT LIMITED R&D, BANGALORE COMPLEX BANGALORE 560 075						
3						
2						
1						