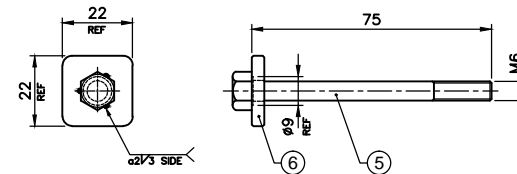
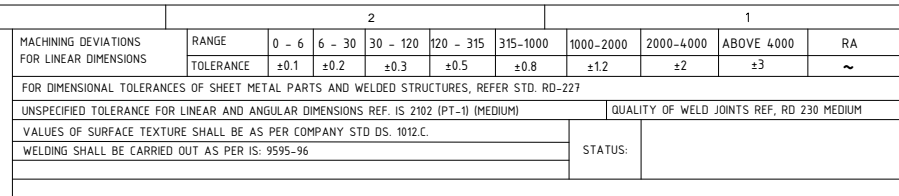
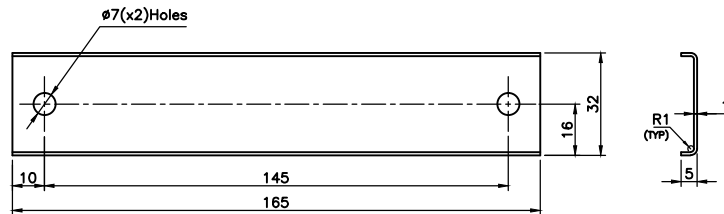


GRADE No.	N12	N11	N10	N9	N8	N7	N6	N5	N4	N3	N2	N1
VALUE	50	25	12.5	6.3	3.2	1.6	0.8	0.4	0.2	0.1	0.05	0.025
SYMBOL												




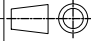


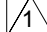


UNCONTROLLED



NOTE:

1. REMOVE ALL SHARP EDGES
2. FOR CLEATS Min TENSILE STRENGTH: 65 N/mm²
3. BURNING RESISTANCE : SELF EXTINGUISH.
4. ITEM-1 SHALL CONFIRM TO EN45545-HL-3

6	2	555-56360	PAD			
5	2	RFB1420675	HEX.HD.BOLT M6x75 TO IS:1364(Pt-3)-2002/ Matl.:—IS-1367(P14)—84 Gr A2-70, STAINLESS STEEL WITH PRE APPLIED ADHESIVE			
4	2	RFN5540652	HEX. NUT WITH FLANGE M6 TO ISO 7044-83/ Matl.:—IS-1367(P14)—84 Gr A2-70, STAINLESS STEEL			
3	2	525-56158-3	T-BOLT ASSY		ASSY	
2	1	525-56158-2	PLATE	t1	AISI 304	
1	2	525-56158-1	CLEAT		NYLON6	
SL.No.	QTY	PART / STOCK No.	DESCRIPTION	SIZE	COMPANY STD./LS	Wt. (Kg)
					MATERIAL	
			PRODUCT	MUMBAI METRO CARS L2&L7		
			REF DRG			
			MATERIAL			
			HEAT TREAT.	APPD	VS	
			SURFACE TREAT.	REVD		
			TITLE	CHKD	SNH	
			CLEAT ASSY	DRWN	VISHNU	
				SCALE	 SHEET Wt.(Kg) OF 0	
				DRG No.	ALT	
	DIA 43 WAS 34 BOLT LENGTH 75 WAS 65 ECN:52510214	23.06.2020 BY VISHNU CHKD SNH APPD VS	 BEM LIMITED <small>NEW PONTRECH, NEW DELHI</small>	525-56158		
ALT.NO.	ECN NO/CHANGES	DATE	BY	CHKD	APPD	VS