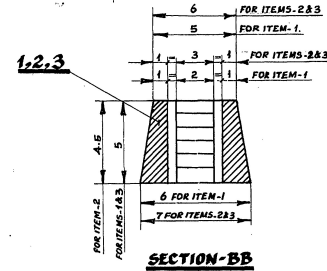
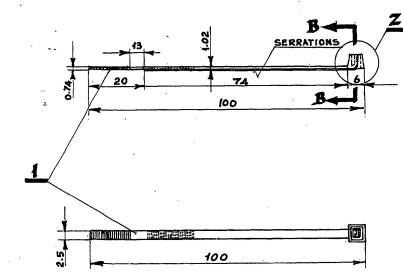
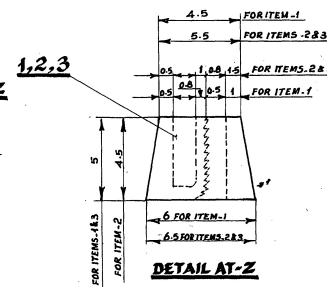
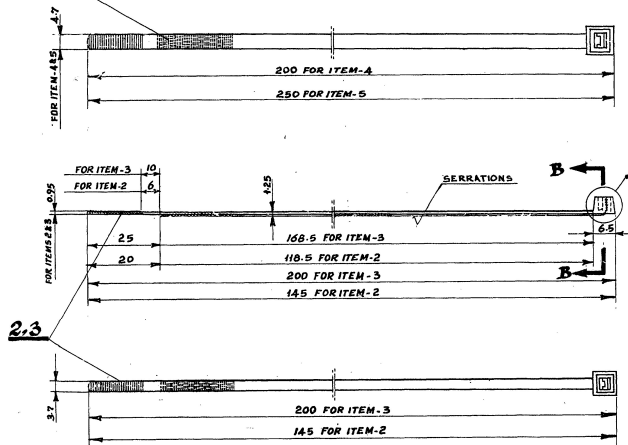
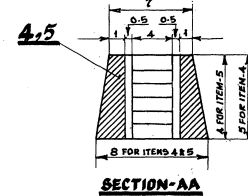
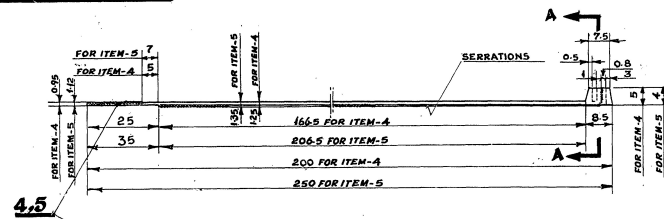


MR/SK-7-6-015



**NOTE:**  
1. SERRATIONS TO BE PROVIDED SUCH THAT THE PLAIN SURFACE DOES NOT MAKE GRIP OVER THE CABLES.  
\* 2. MATL. TO BE SELF EXTINGUISHING TO SUIT TEMPERATURE RANGE 40°C - 85°C.

ALTERATIONS	
5/85	
THE FOLLOWING ALTERATIONS ARE EFFECTED.	
ITEM	DIMENSION ALTD
1	80 74
2	110 118.5
3	165 168.5
4	175 191.5
5	205 206.5
IN THE FIGURE, WIDTH OF ITEM 4 & 5 ALTERED FROM 4.5 AND 3 TO 4.7 ONLY.	
CDA/E/MTP	54/
IN ITEM-4 DIMENSION 191.5 AND 206.5 ALTD. AS 146.5 AND 200 RESPLY. DRG. REDRAWN.	
CDA/E	68/

NO OFF	DESCRIPTIONS & DIMENSIONS	ITEM	REF. DRG.	MAT. & SPEC.	REMARKS
	CABLE TIE	250L, 4.7W	5	NYLON	*
	CABLE TIE	200L, 4.7W	4	NYLON	*
	CABLE TIE	200L, 3.7W	3	NYLON	*
	CABLE TIE	145L, 3.7W	2	NYLON	*
	CABLE TIE	100L, 2.5W	1	NYLON	*
GROUP					
SUPERSEDED BY:					
SCALE					
CDA					
CHD					
TRD					
DEM					
ALT					
INTEGRAL COACH FACTORY					
MADRAS-38.					
INDIAN RAILWAY STANDARDS					
MR/SK-7-6-015					

ASSEMBLY DRAWINGS			
26-H-85	DATE	SEE/I/MTP	SEE/D/MTP
ALT	DATE	SEE/I/MTP	SEE/D/MTP