

COPY RIGHT & CONFIDENTIAL THIS DOCUMENT IS THE EXCLUSIVE PROPERTY OF BEML & CONTAINS CONFIDENTIAL INFORMATION. THIS DOCUMENT OR ITS CONTENTS SHALL NOT BE USED, REPRODUCED OR DISCLOSED IN WHOLE OR IN PART, WITHOUT PRIOR WRITTEN PERMISSION OF BEML. THIS DOCUMENT & ALL ITS COPIES SHALL BE RETURNED TO BEML ON DEMAND DRAWING RELEASED FROM PLM, PHYSICAL SIGNATURE NOT REQUIRED

GRADE No.	VALUE	SYMBOL
N1	0.025	▽
N2	0.05	▽
N3	0.1	▽
N4	0.2	▽
N5	0.4	▽
N6	0.8	▽
N7	1.6	▽
N8	3.2	▽
N9	6.3	▽
N10	12.5	▽
N11	25	▽
N12	50	▽

NOTE

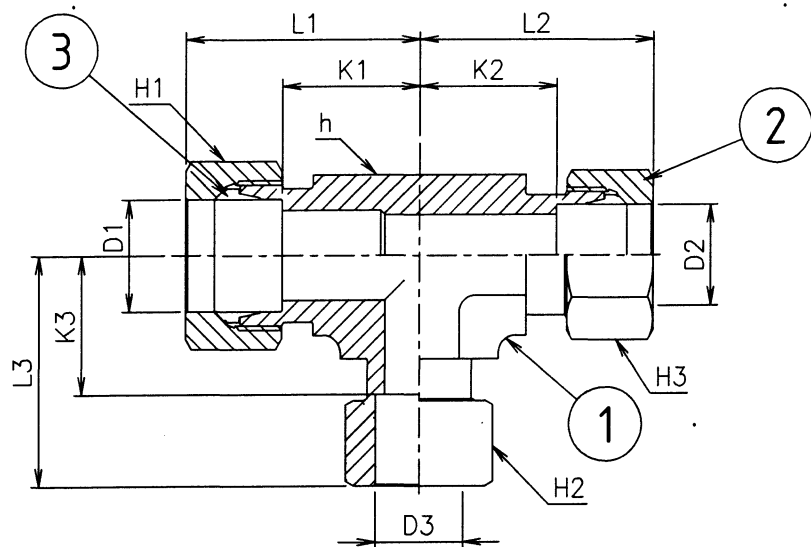
THE STRENGTH AND NO AIR LEAKAGE SHALL BE GUARANTEED UNDER THE CONDITION OF NO. 1 AND 2.

1. TEMPERATURE RANGE : -40 - +80 C °

2. OPERATING PRESSURE : MAX. 80 BAR

SPECIFICATION: DIN2353 (ISO8434-1)

- SHALL BE APPLIED FOR DIMENSIONS NOT SPECIFIED AT DRAWING



UNCONTROLLED COPY

MACHINING DEVIATIONS FOR LINEAR DIMENSIONS	RANGE	0 - 6	6 - 30	30 - 120	120 - 315	315-1000	1000-2000	2000-4000	ABOVE 4000	RA
	TOLERANCE	±0.1	±0.2	±0.3	±0.5	±0.8	±1.2	±2	±3	~
FOR DIMENSIONAL TOLERANCES OF SHEET METAL PARTS AND WELDED STRUCTURES, REFER STD. RD-227										
UNSPECIFIED TOLERANCE FOR LINEAR AND ANGULAR DIMENSIONS REF. IS 2102 (PT-1) (MEDIUM)							QUALITY OF WELD JOINTS REF. RD 230 MEDIUM			
VALUES OF SURFACE TEXTURE SHALL BE AS PER COMPANY STD DS. 1012.C.						STATUS:				
WELDING SHALL BE CARRIED OUT AS PER IS: 9595-96										

PART NO.	TUBE O.D (mm)			WIDTH ACROSS FLAT				L1	L2	L3	K1	K2	K3
	D1	D2	D3	H1	H2	H3	h						
942-60127	22	22	G1/4	36	19	36	27	44	44	43	27.5	27.5	28

4	1	909-60709	SLEEVE		SUS316	
3	2	909-60711	SLEEVE		SUS316	
2	2		NUT		SUS316	
1	1		BODY		SUS316	
SL.No.	QTY	PART / STOCK No.	DESCRIPTION	SIZE	COMPANY STD./I.S	Wt. (Kg)
					MATERIAL	
△			PRODUCT	KMRC RS(3R) METRO CARS		
△			REF DRG			
△			MATERIAL			
△			HEAT TREAT.		APPD	KP 11P 20/02/2017
△			SURFACE TREAT.		REVD	MS 20/03/2017
△			TITLE		CHKD	GD 20/3/2017
			TEE FEMALE			
					DRWN	SK 18/3/2017
					SCALE	1:1
					SHEET	1 OF 1
					DRG No.	942-60127
					ALT	-

BEML BEML LIMITED