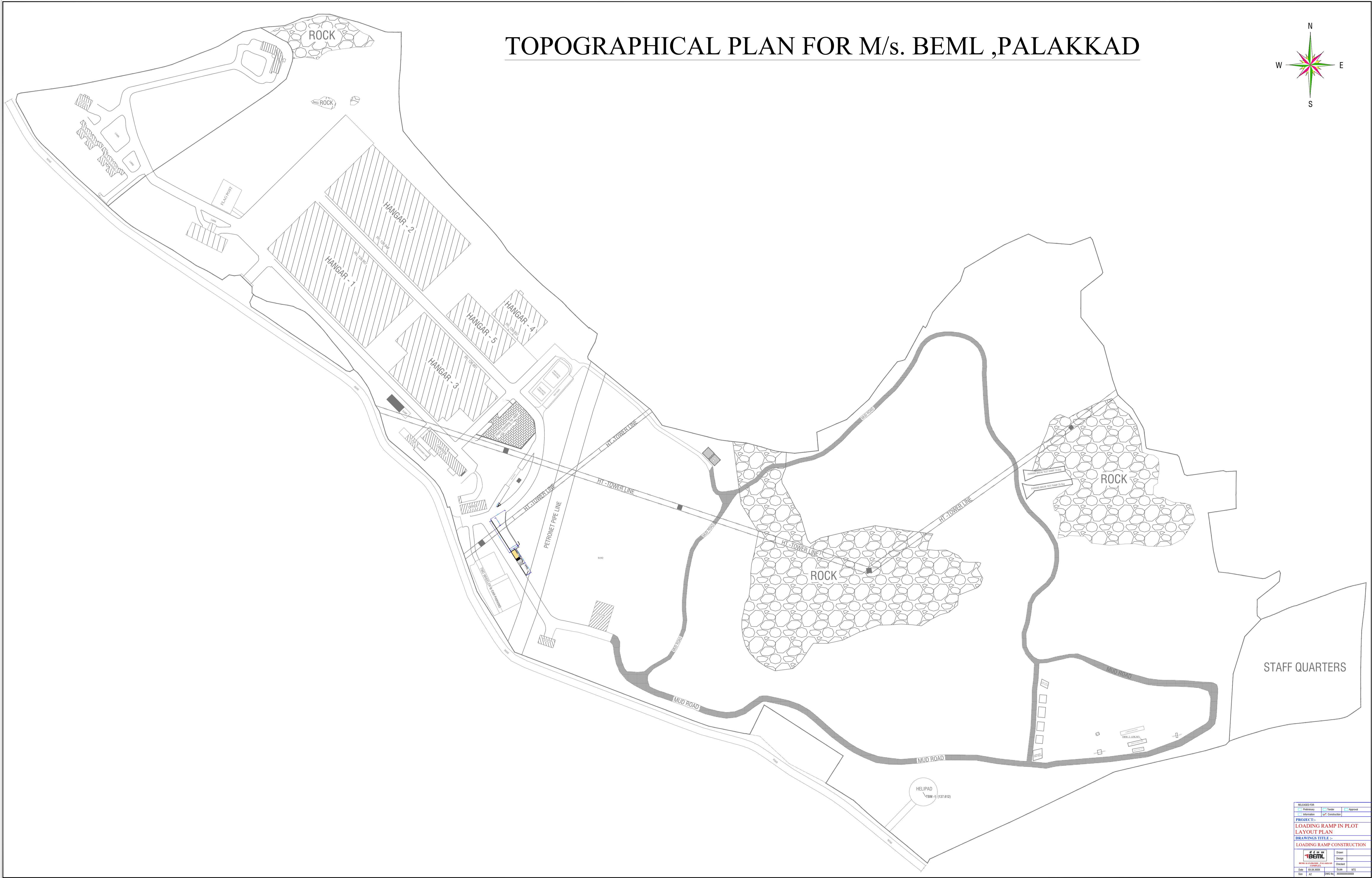
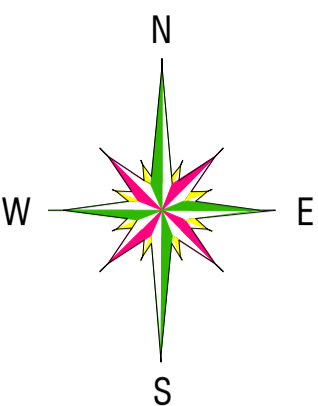



TOPOGRAPHICAL PLAN FOR M/s. BEML ,PALAKKAD



RELEASED FOR		
<input type="checkbox"/> Preliminary	<input type="checkbox"/> Tender	<input type="checkbox"/> Approval
<input type="checkbox"/> Information	<input checked="" type="checkbox"/> Construction	
PROJECT:-		
LOADING RAMP IN PLOT LAYOUT PLAN		
DRAWINGS TITLE :-		
LOADING RAMP CONSTRUCTION		
		Drawn
BANK KANNADIA, PALAKKAD		Design
Date: 01.01.2024		Checked
Site: A2		Scale: NTS

FFL 130.996

The logo for HTT-TOWN is displayed diagonally. It features the text "HTT-TOWN" in a bold, sans-serif font. The letters are dark grey, and the hyphen is a lighter shade. The text is set against a white background that has a jagged, sawtooth-like border along its right edge.

PETRONET PIPELINE

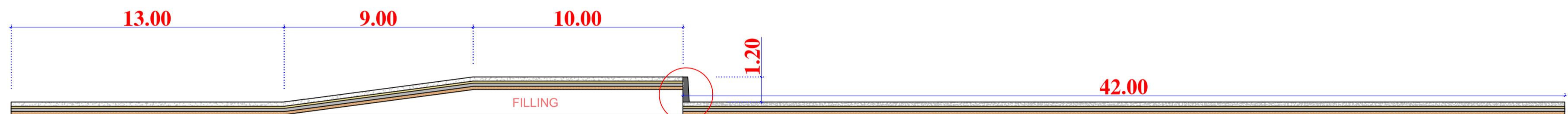
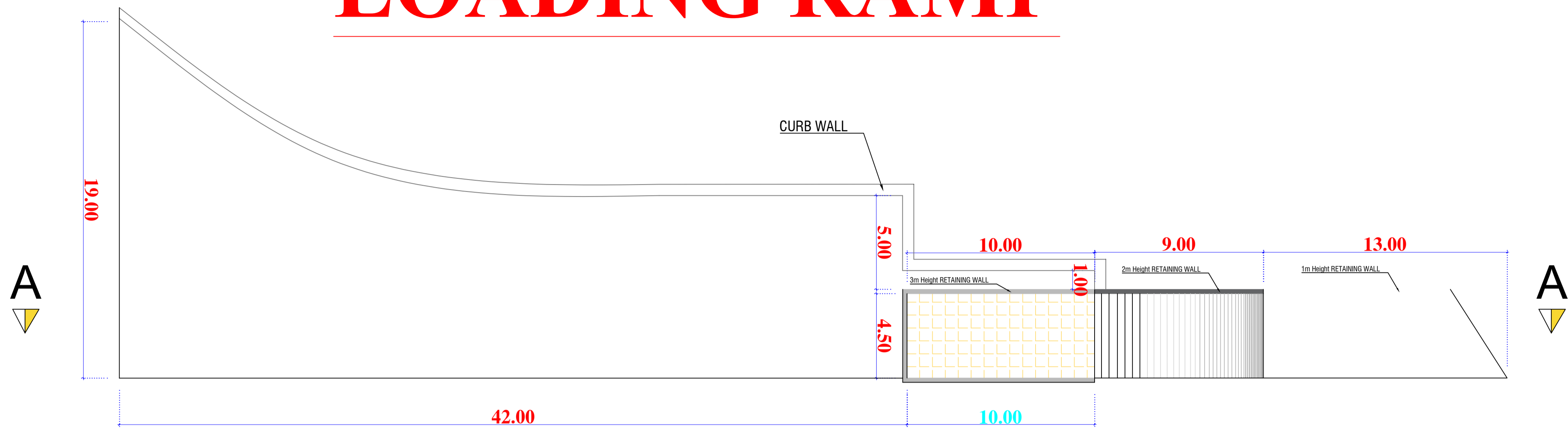
CURB WALL

2m Height RETAINING WALL

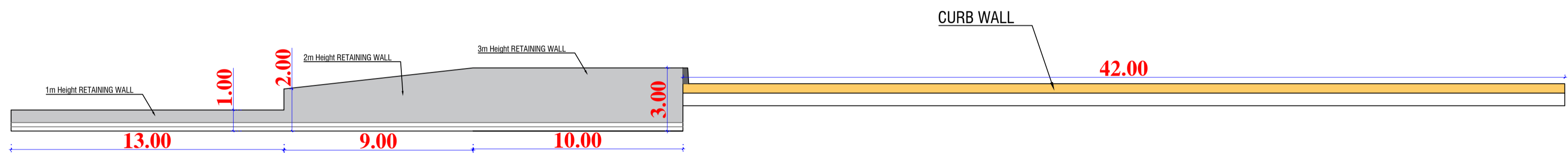
2m Height RETAINING WALL

1m Height RETAINING WALL

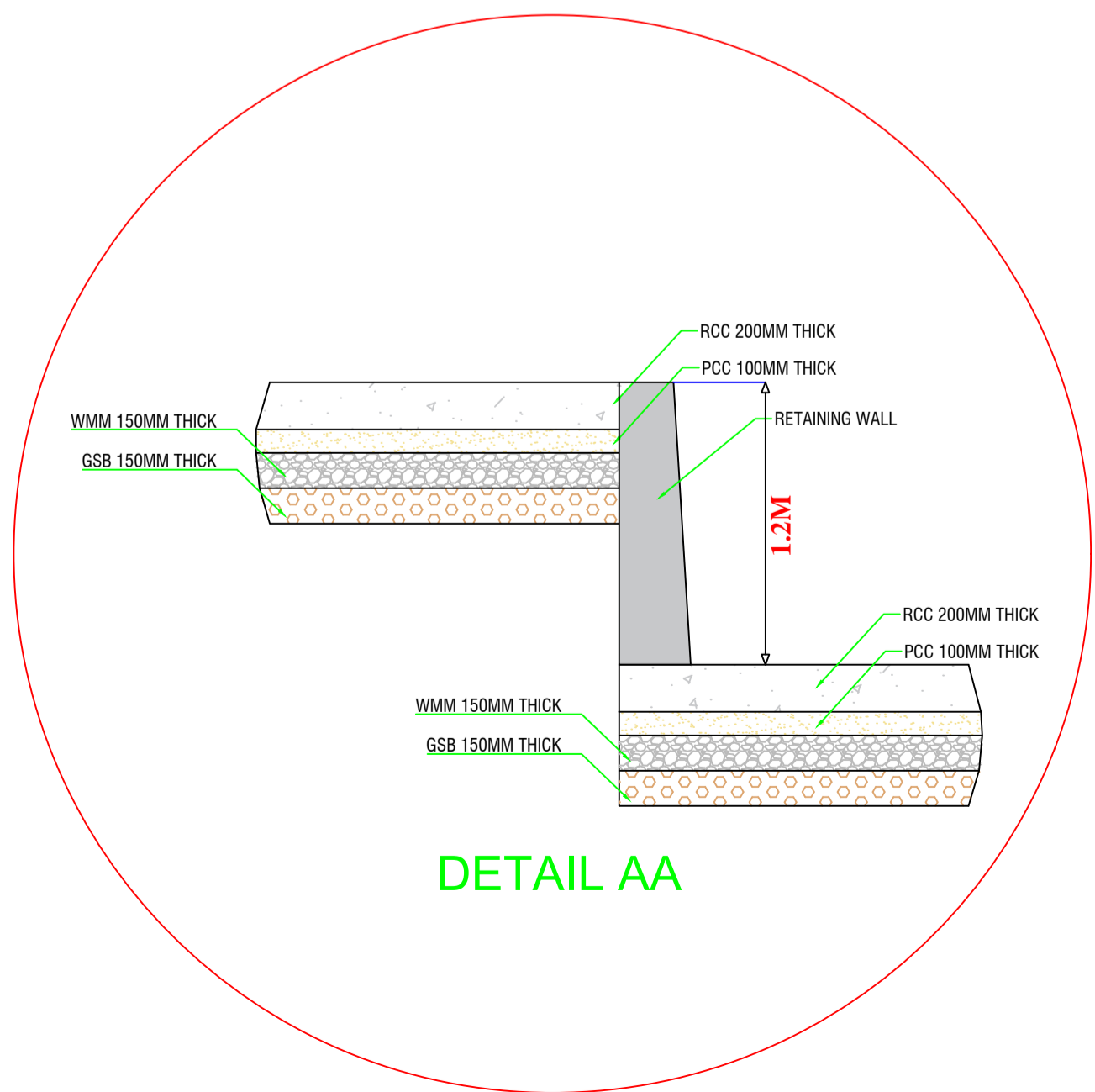
LOADING RAMP



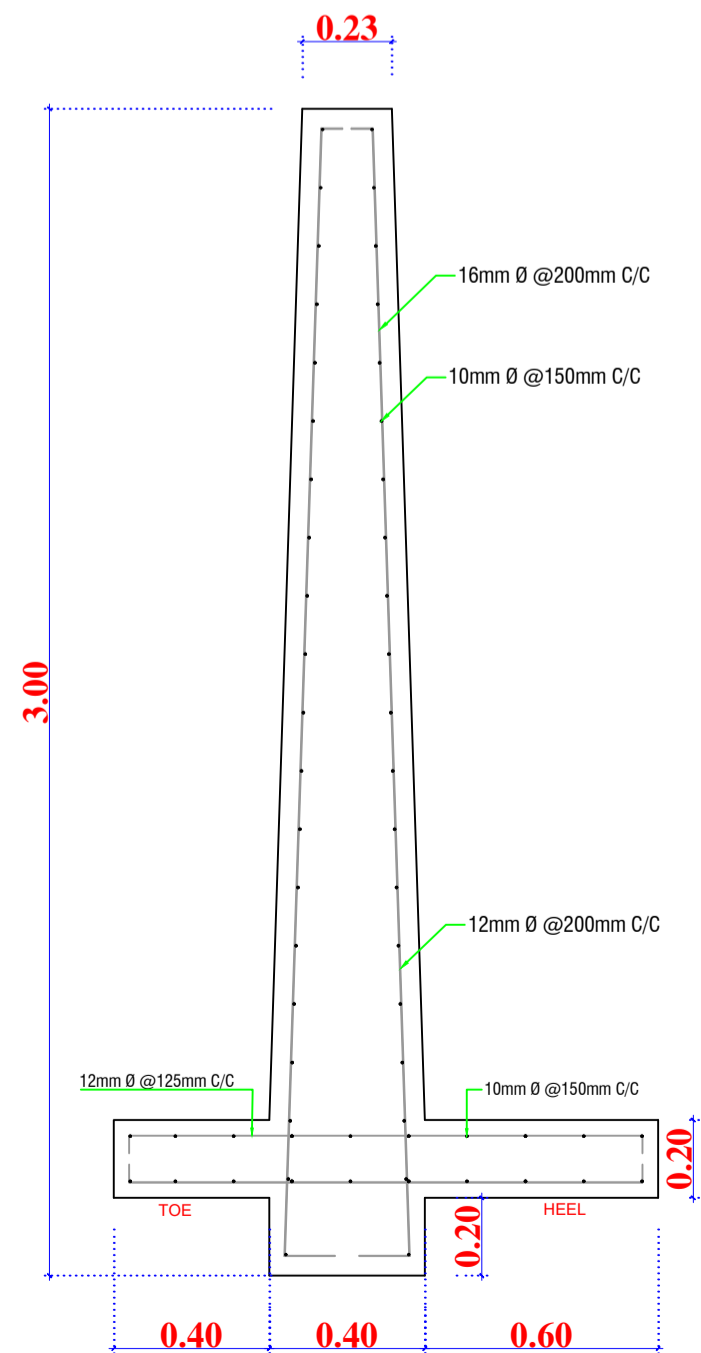
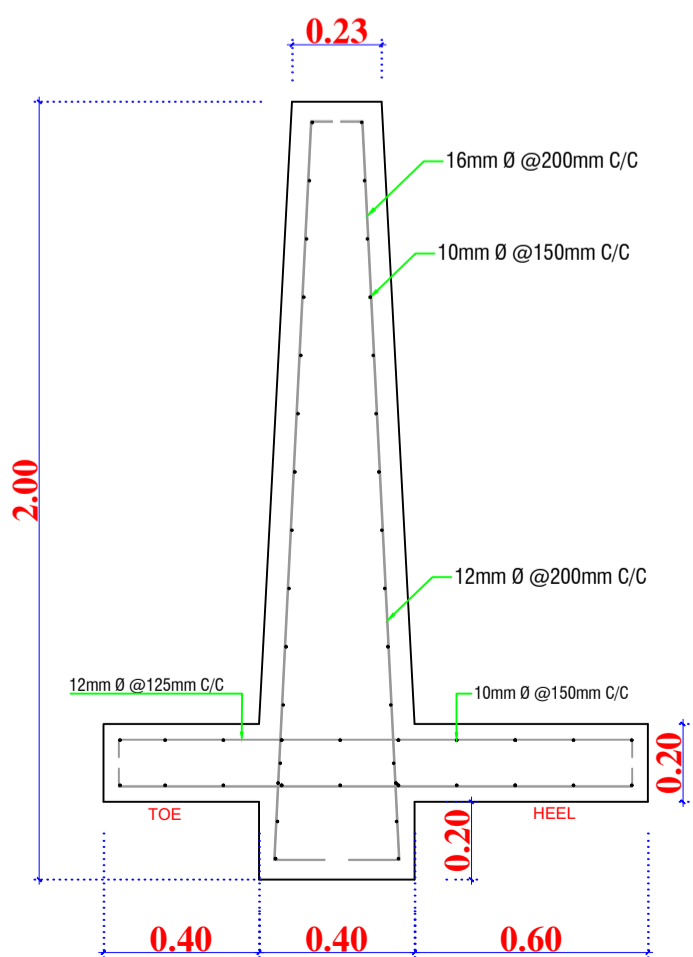
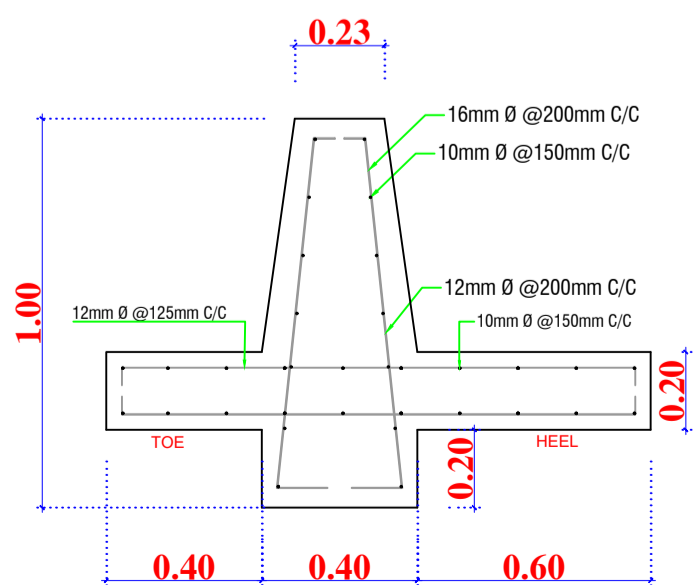
DETAIL AA
SECTION AA



ELEVATION



DETAIL AA



RELEASED FOR

☐ Preliminary

☐ Tender

☐ Approval

☐ Information

☒ Construction

PROJECT:-

LOADING RAMP

DRAWINGS TITLE :-

LOADING RAMP CONSTRUCTION



BEML KANJIKODE , PALAKKAD
COMPLEX

Drawn

Design

Checked

Date XX.XX.XXXX

Size A2

Scale NTS

DWG No. XXXXXXXXXXXXX