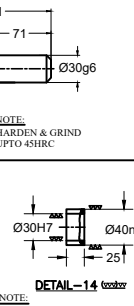
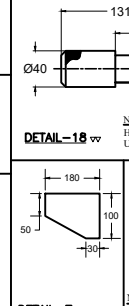
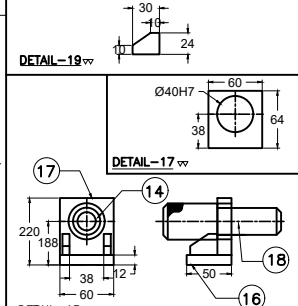
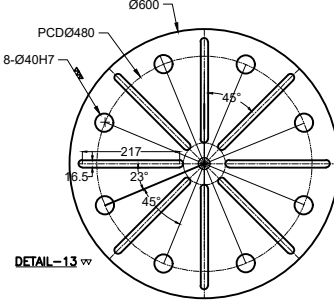
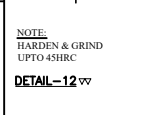
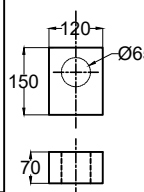
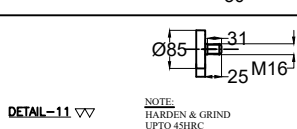
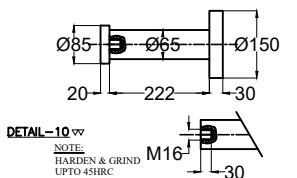


DETAIL-1

DETAIL-2

- Note:-
1. All dim. are in mm.
 2. Remove sharp edges.
 3. One no of of rotator/spinner consists of two nos of A- frames.
 4. General Tolerance for all the dimensions wherever not mentioned is $\pm 0.5\text{mm}$.
 5. The bearing choosen for -12 should be for a maximum load of 2Tons.

20	6	STIFFNER CHANNEL(50X100)	IS:808	050X100XL-Sult to assembly
19	4	PLATE	E250	08X030X035
18	2	STOPPER PIN	EN24	#45 X 135L
17	2	PLATE	E250	20X065X070
16	2	PLATE	E250	12X055X065
15	2	STOPPER ASSEMBLY CONSISTS OF	-14,-16 TO 19	
14	10	BUSH	EN24	#45 X 25L
13	2	PLATE	E250	25THK X #415
12	4	BLOCK with SKF make suitable bearing	EN24	70X125X155
11	2	SHAFT LOCK PIN	EN24	#90X060L
10	2	SHAFT	EN24	#150X260L
9	2	PLATE	E250	20X205X205
8	2	PLATE	E250	20X235X1125
7	8	GUSSET	E250	16X105X125
6	2	PLATE	E250	20X235X565
5	1	2 CHANNEL(50X100)	IS:808	050X100X910
4	1	4 CHANNEL(50X100)	IS:808	050X100X880
3	1	2 BOX MADE BY CHANNEL(75X200)	IS:808	150X200X780
2	1	1 A FRAME ASSY CONSITS OF	-3 to -19	
1	1	1 A FRAME ASSY CONSITS OF	-3 to -19	



Item No.	Qty	Description	Material	Size
Component no.				
Product	HSR VB28			
User dept.				
Used on				
Scale	1:10			
wt.in kgs				
Sheet	1 OF 1			
Approved	MANUFACTURED			
Checked	DESIGNED			
Drawn	MRK			
DATE	04-11-20			
BEML Limited	Bangalore Complex			
Bangalore-560 075.				
TOOL DES No.				
SK.NO.T-1249				