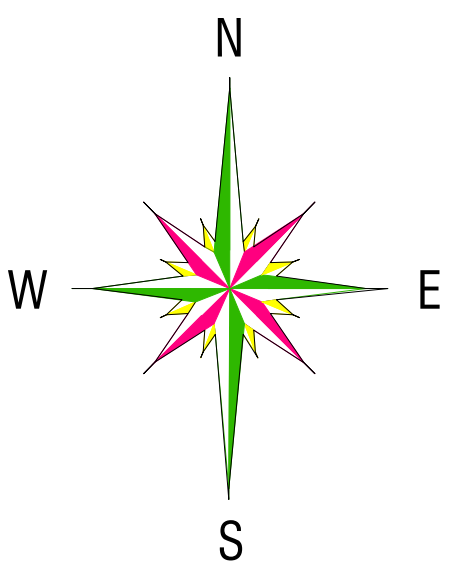
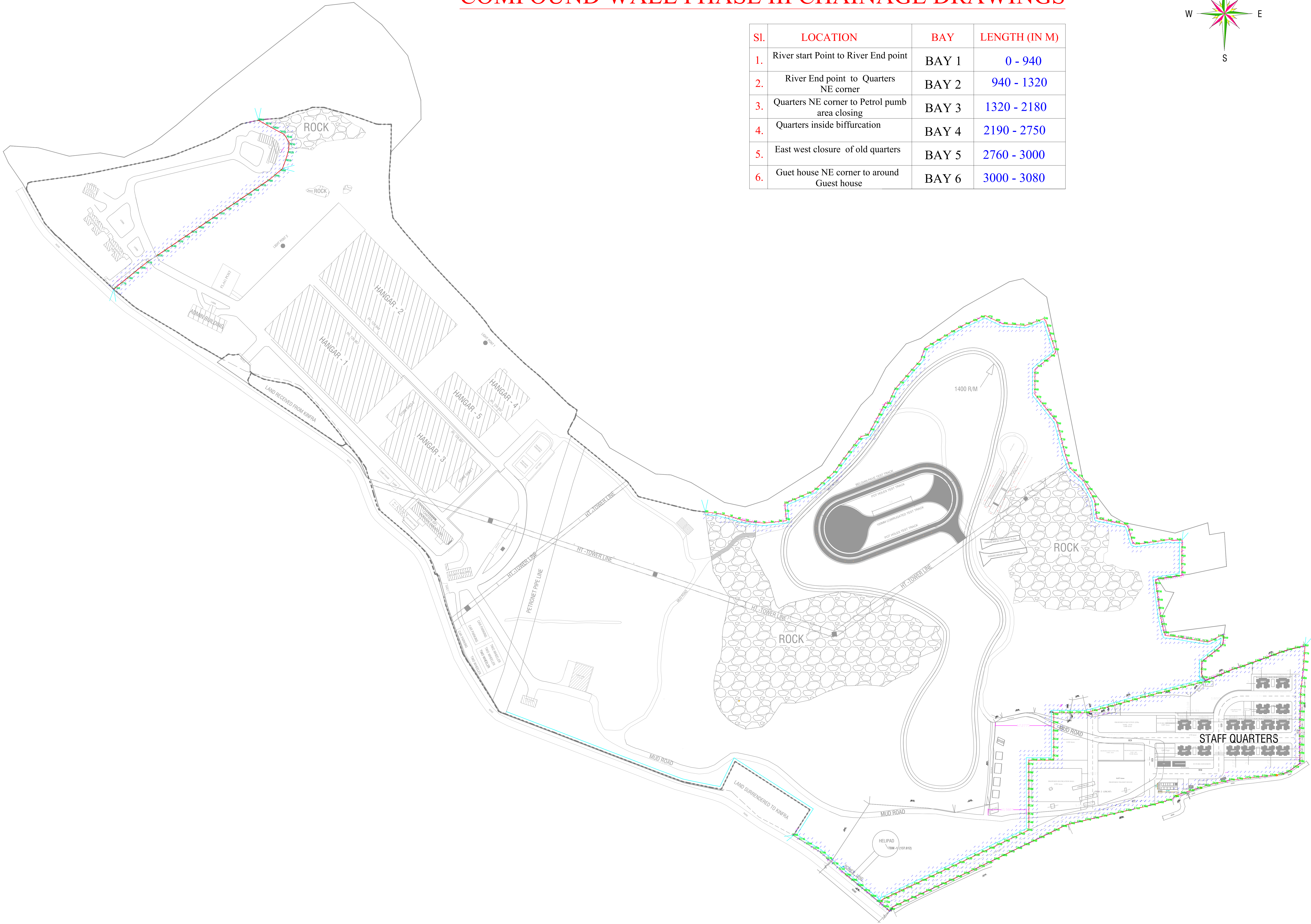


COMPOUND WALL PHASE III CHAINAGE DRAWINGS



Sl.	LOCATION	BAY	LENGTH (IN M)
1.	River start Point to River End point	BAY 1	0 - 940
2.	River End point to Quarters NE corner	BAY 2	940 - 1320
3.	Quarters NE corner to Petrol pumb area closing	BAY 3	1320 - 2180
4.	Quarters inside biffurcation	BAY 4	2190 - 2750
5.	East west closure of old quarters	BAY 5	2760 - 3000
6.	Guet house NE corner to around Guest house	BAY 6	3000 - 3080



COMPOUND WALL PHASE III
3.3 KM

INTER LOCK ROAD 2.4 KM

RELEASED FOR

☐ Preliminary

☒ Tender

☐ Approval

☐ Information


☐ Construction

PROJECT:-

PROPOSED PHASE III COMPOUND WALL

DRAWINGS TITLE :-

PROPOSED PHASE III COMPOUND WALL
CHAINAGE DRAWING



BEML
Bharat Electronics
Maharaja's Engineering
Maharaja's Engineering
Maharaja's Engineering

Drawn

BEML KANJIKODE, PALAKKAD
COMPLEX

Design

Checked

Scale

Date

XX.XX.XXXX

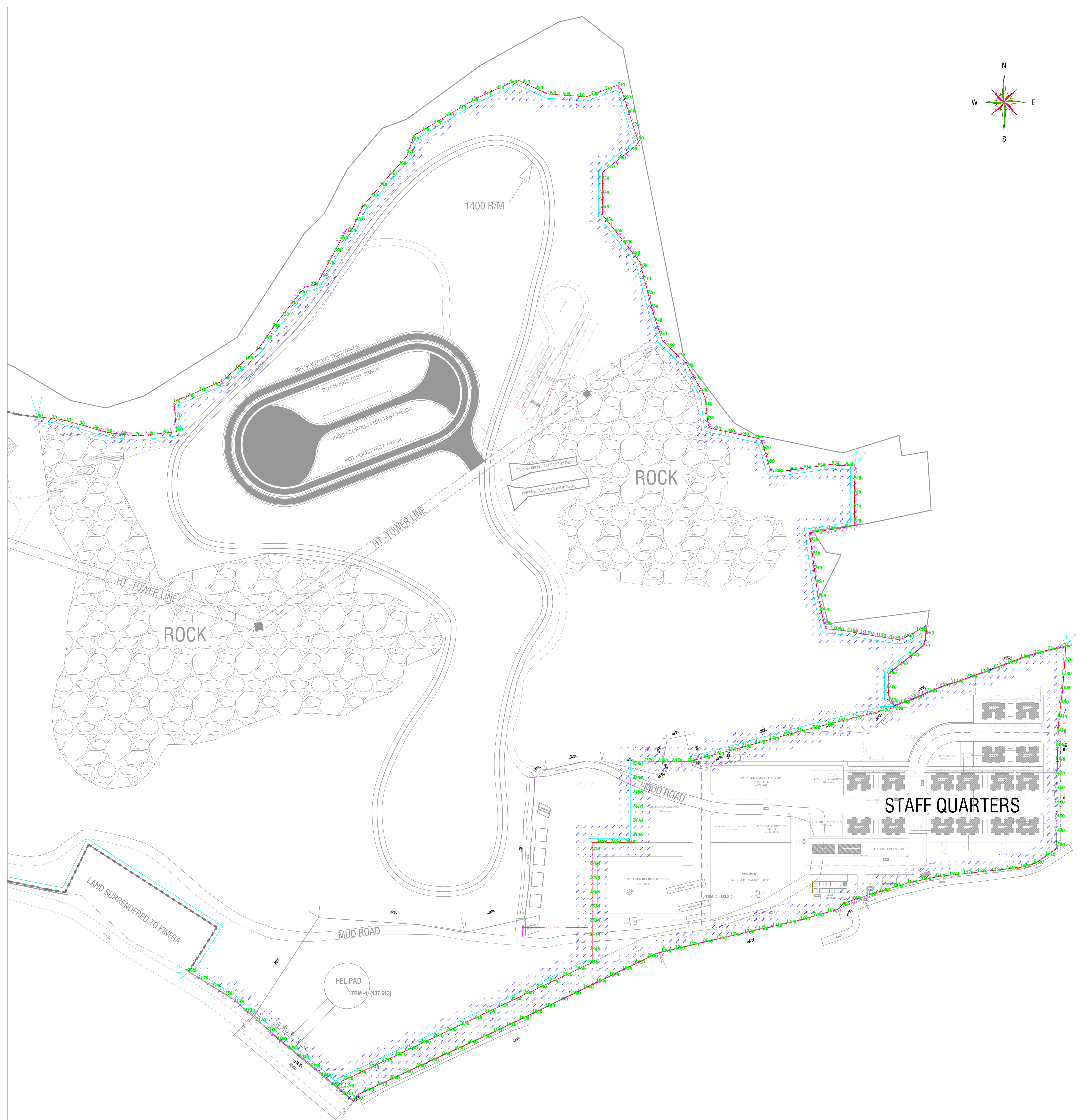
Size

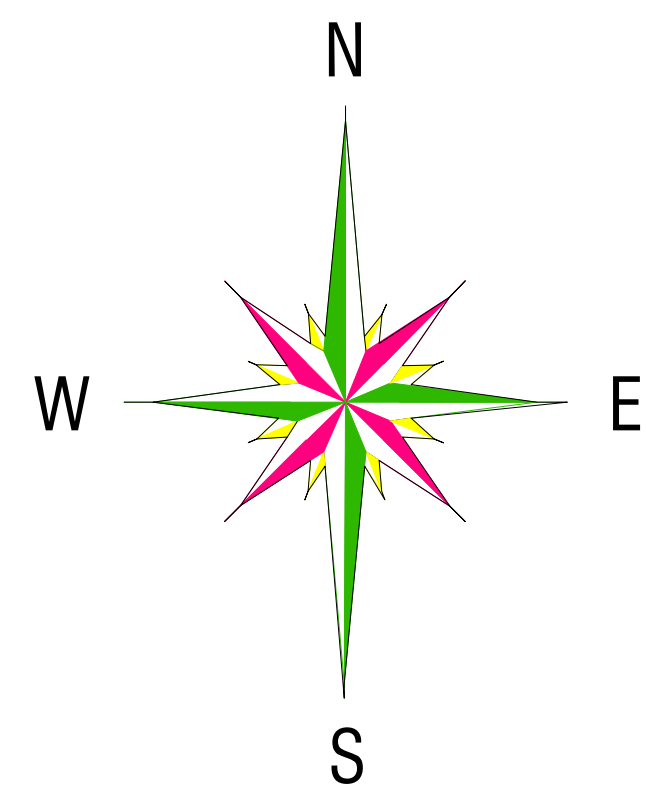
A1

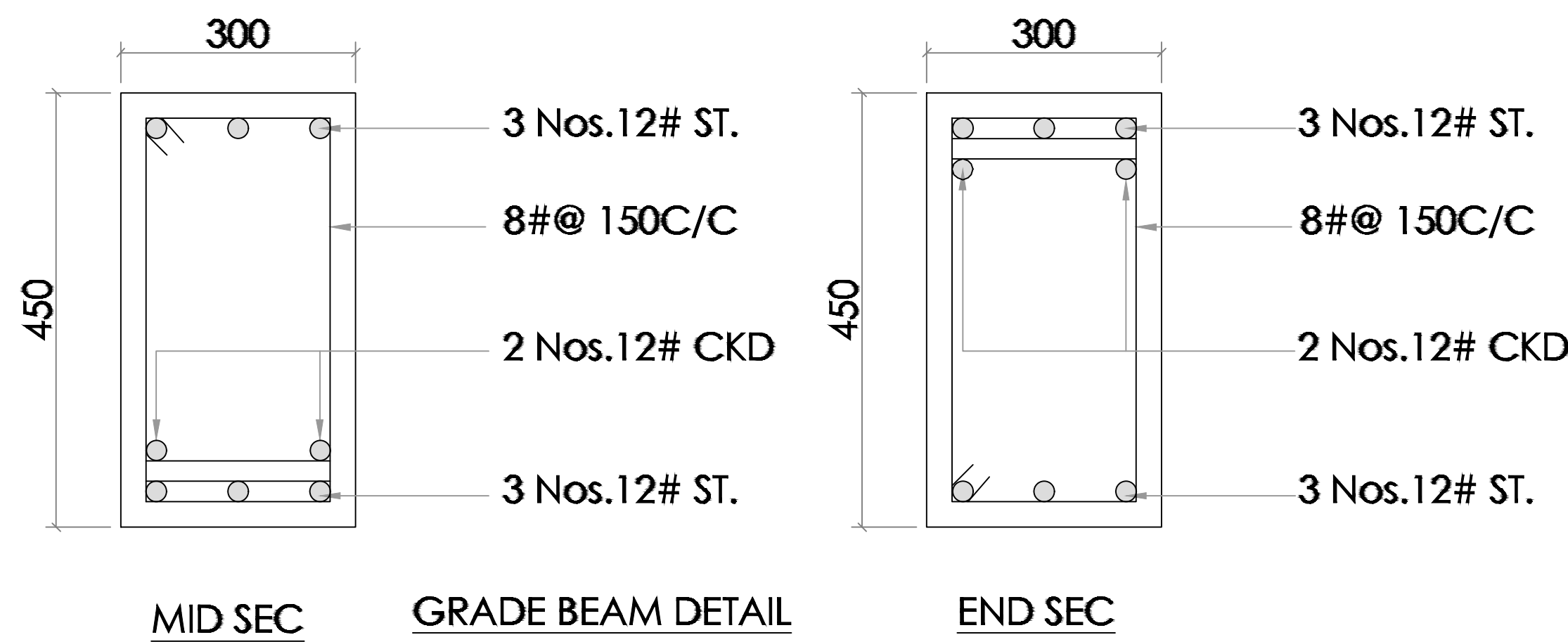
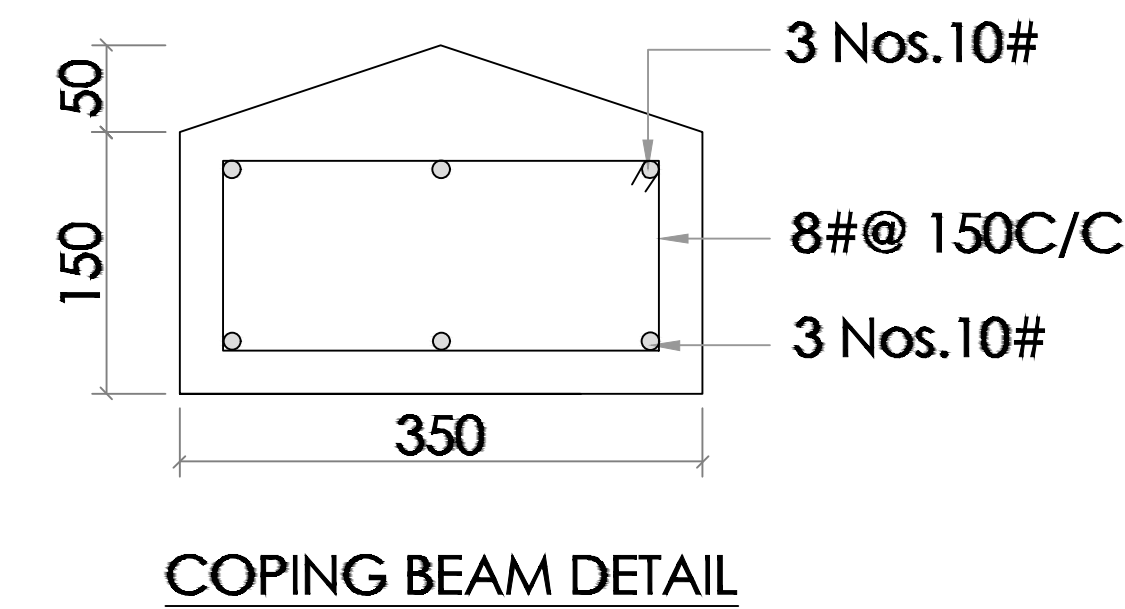
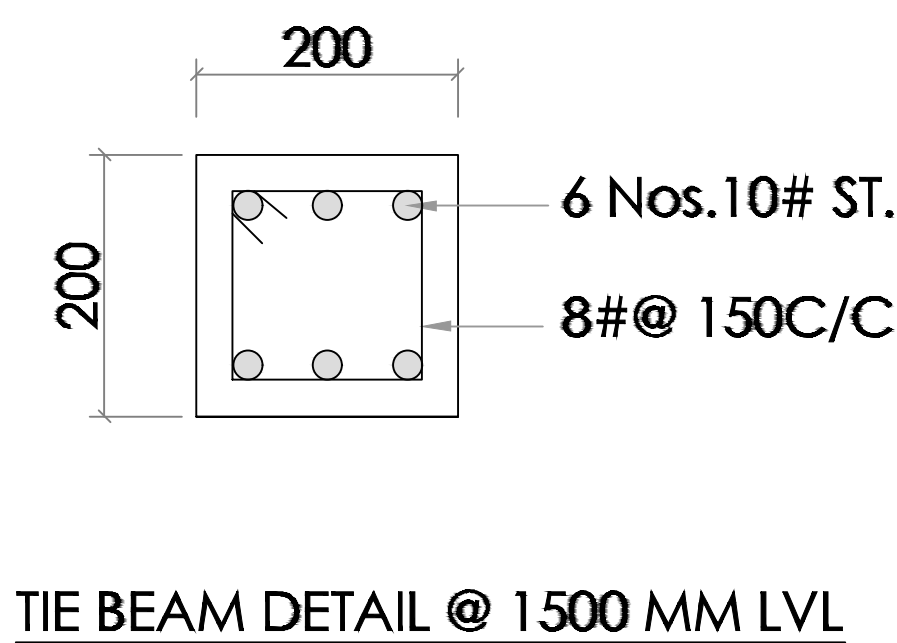
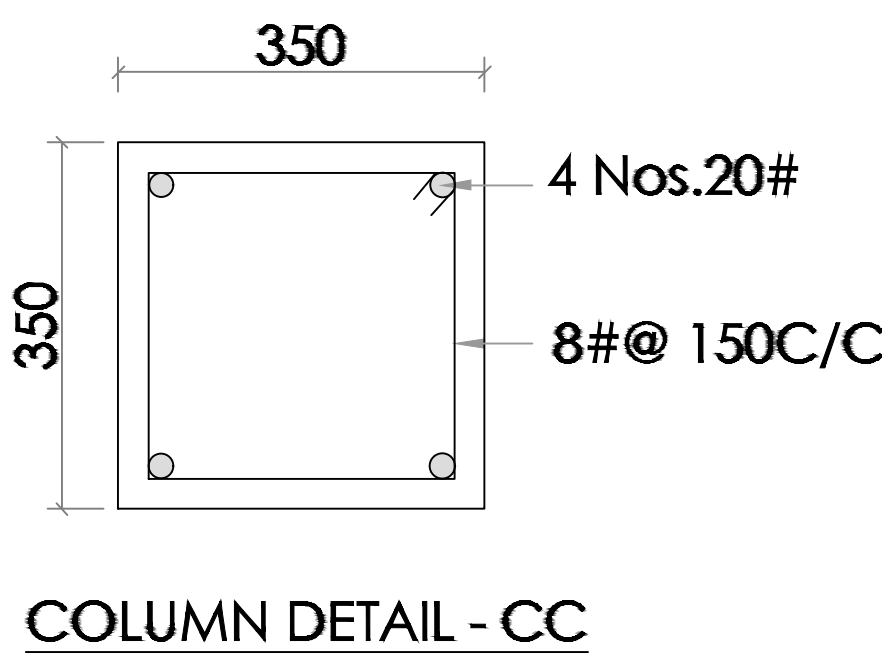
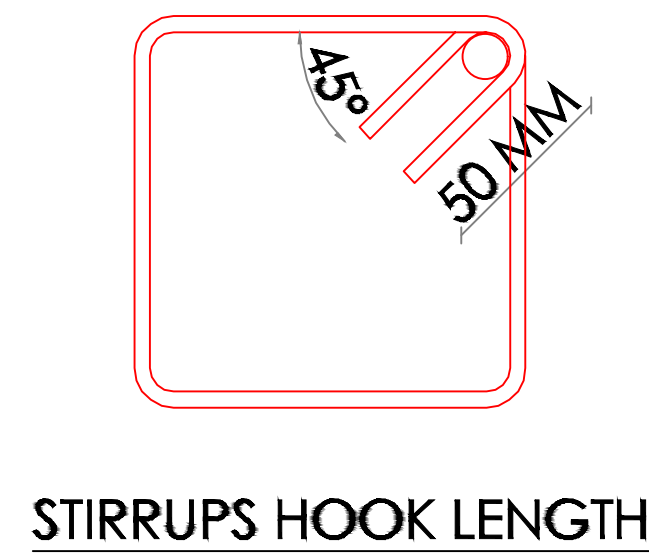
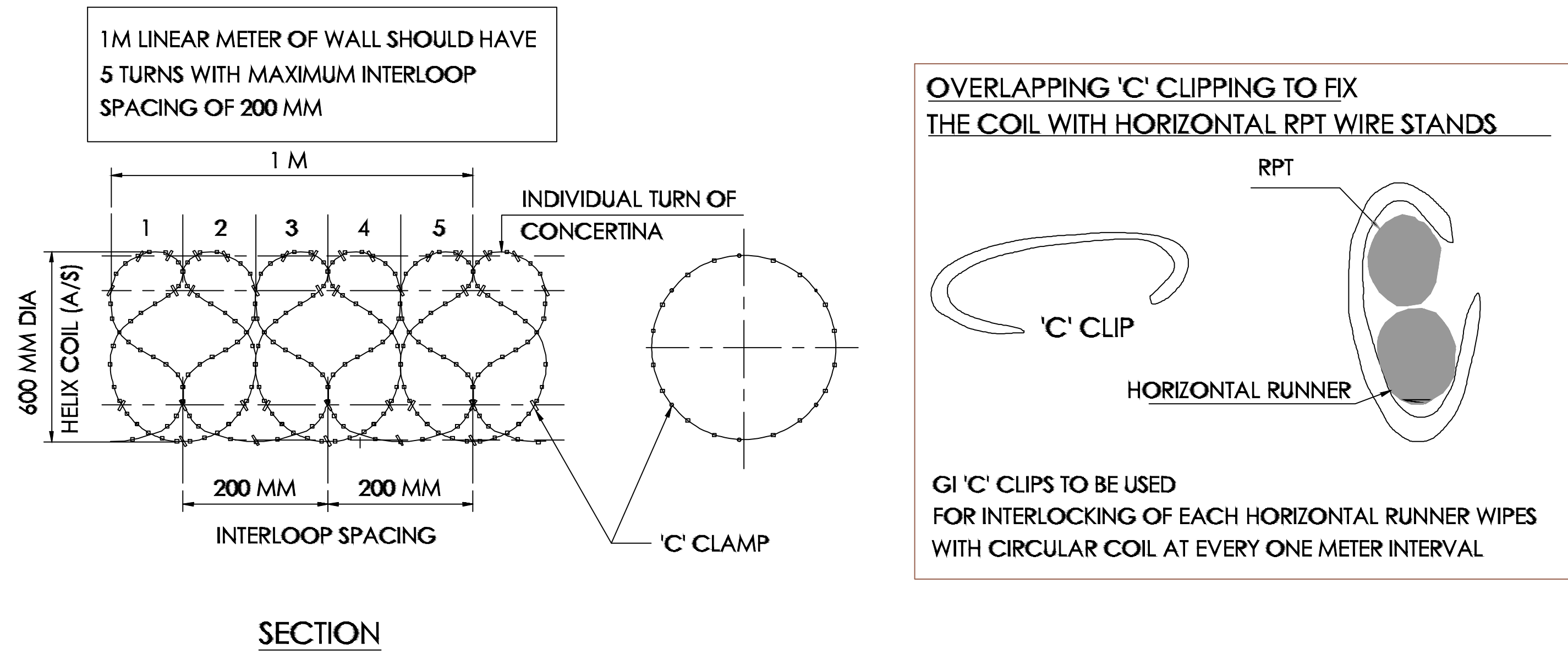
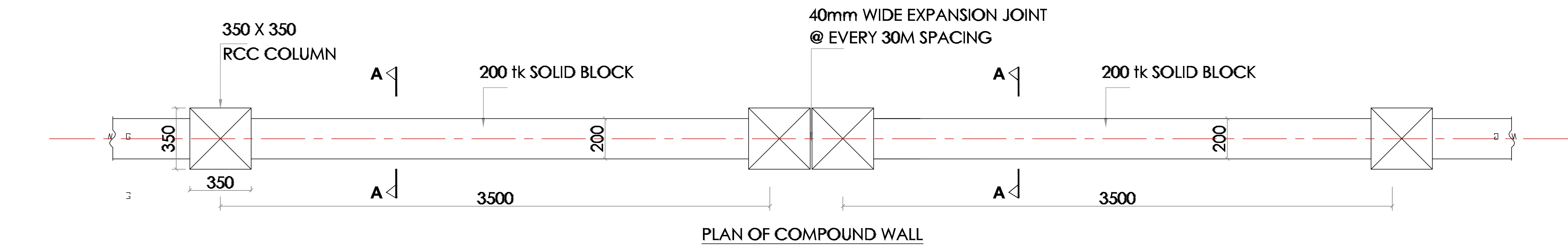
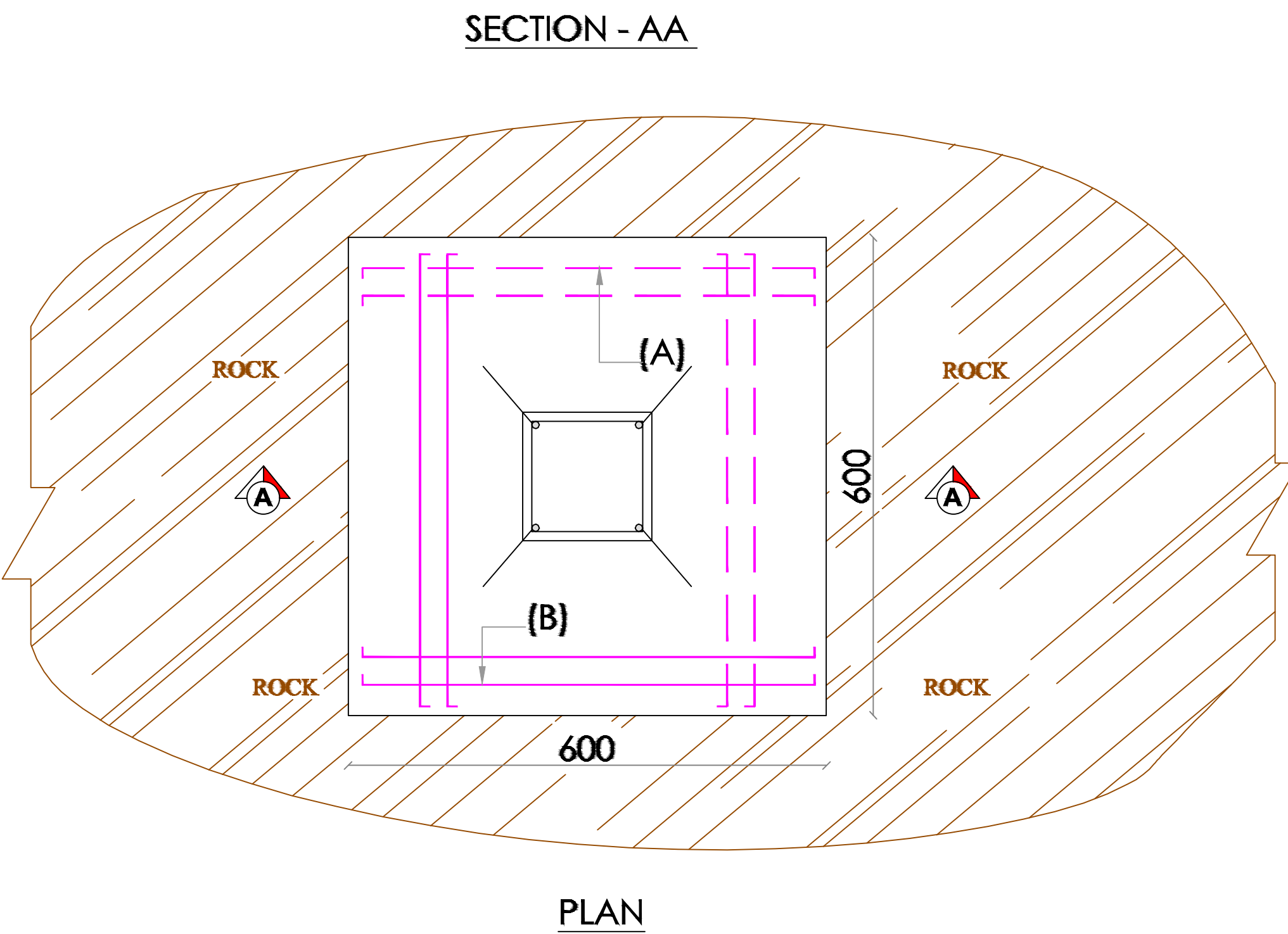
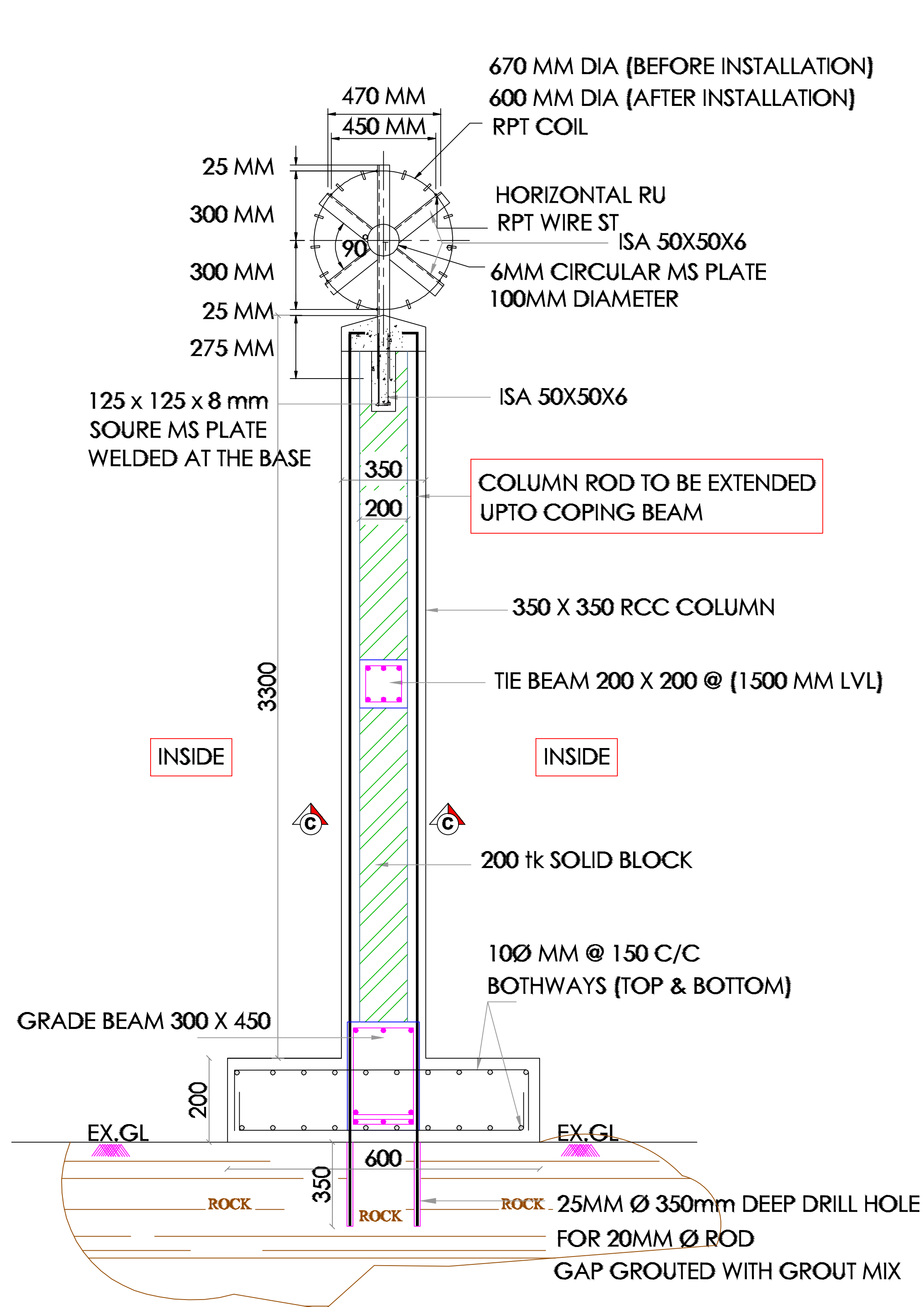
DWG No.

XXXXXXXXXXXX

NTS








BAR BENDING SCHEDULE

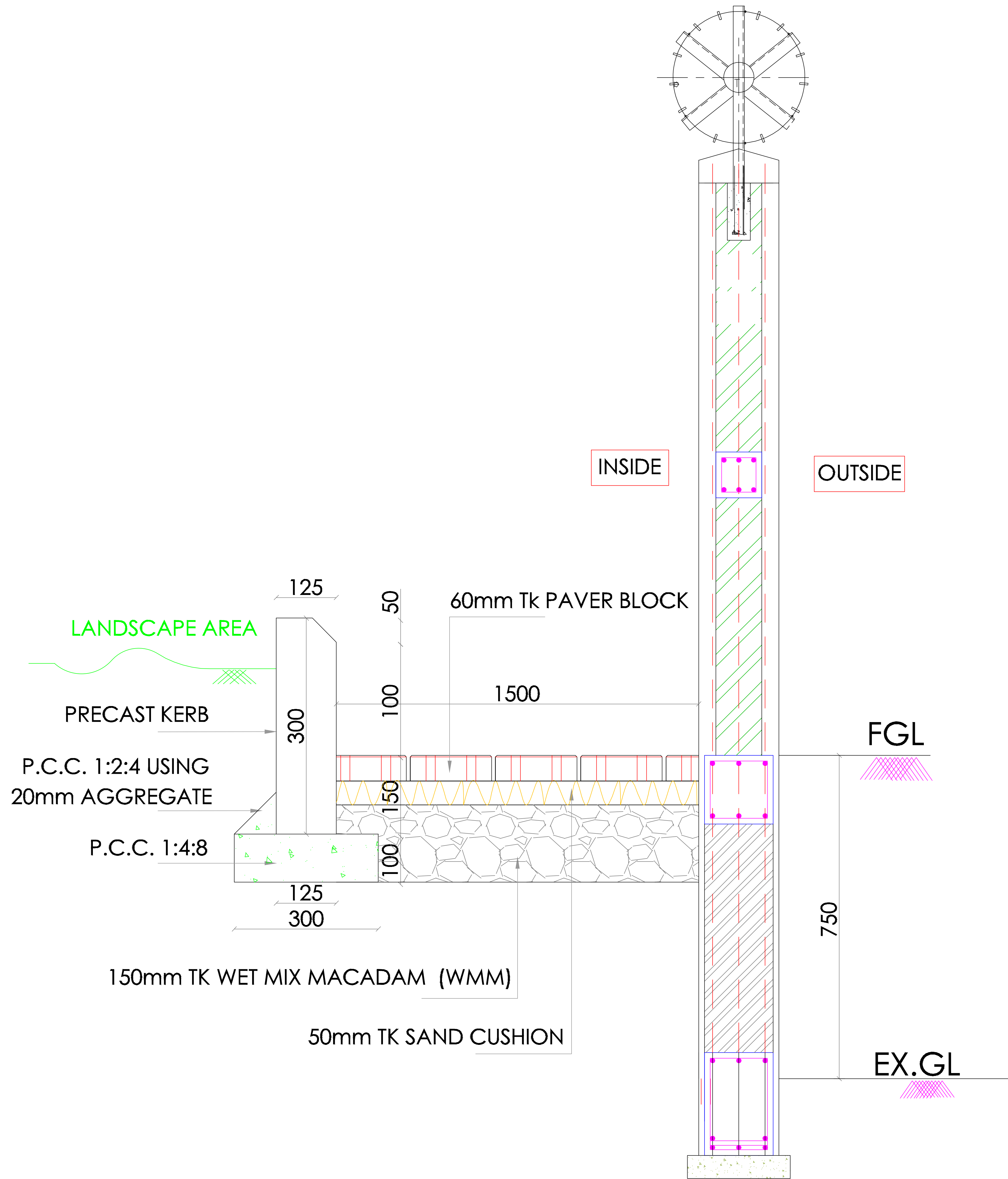
FOOTING REINFORCEMENT DETAIL	
(A) - TOP (BOTHWAYS)	(B) - BOTTOM (BOTHWAYS)
10Ø MM @ 150 C/C BOTHWAYS	10Ø MM @ 150 C/C BOTHWAYS
75 500 75	75 500 75


NOTES:-

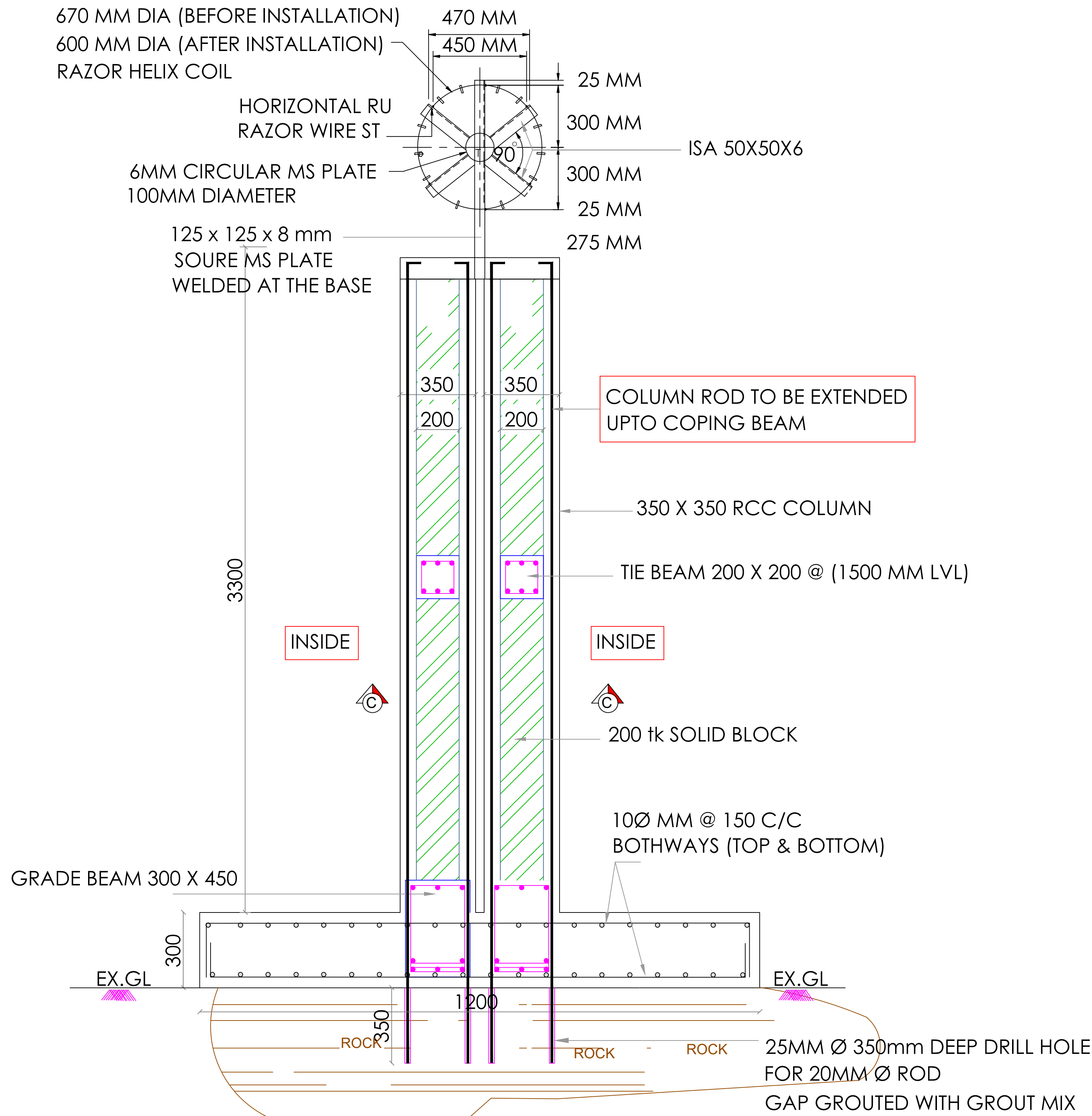
- USE CONCRETE MIX 1:1½:3 & Fe 500 TMT BAR
- PROVIDE CLEAR COVER TO MAIN REINFORCEMENT
 - 50mm FOR FOOTING SIDES & BOTTOM
 - 40mm FOR COLUMN SIDES & BOTTOM
 - FOR BEAMS 20mm
- LAP LENGTH FOR REINFORCEMENT SHALL BE 48 x DIA OF BAR
- HOOK LENGTH FOR RINGS TO 9 x DIA
- # REPRESENTS TOR STEEL
- SPACER ROD SHALL BE 16mm Ø AND 600mm SPACING UOS.
- EXPANSION JOINT TO BE PROVIDED AT EVERY 30M
- ALL DIMENSIONS ARE IN mm UOS.

				DRAW/VN	
				CHKD.	
				APPD.	
				JOB NO:	SCALE:
00	00-00-00	FOR TENDER PURPOSES			1 : 100
REV	DATE	DESCRIPTION	REV.BY		

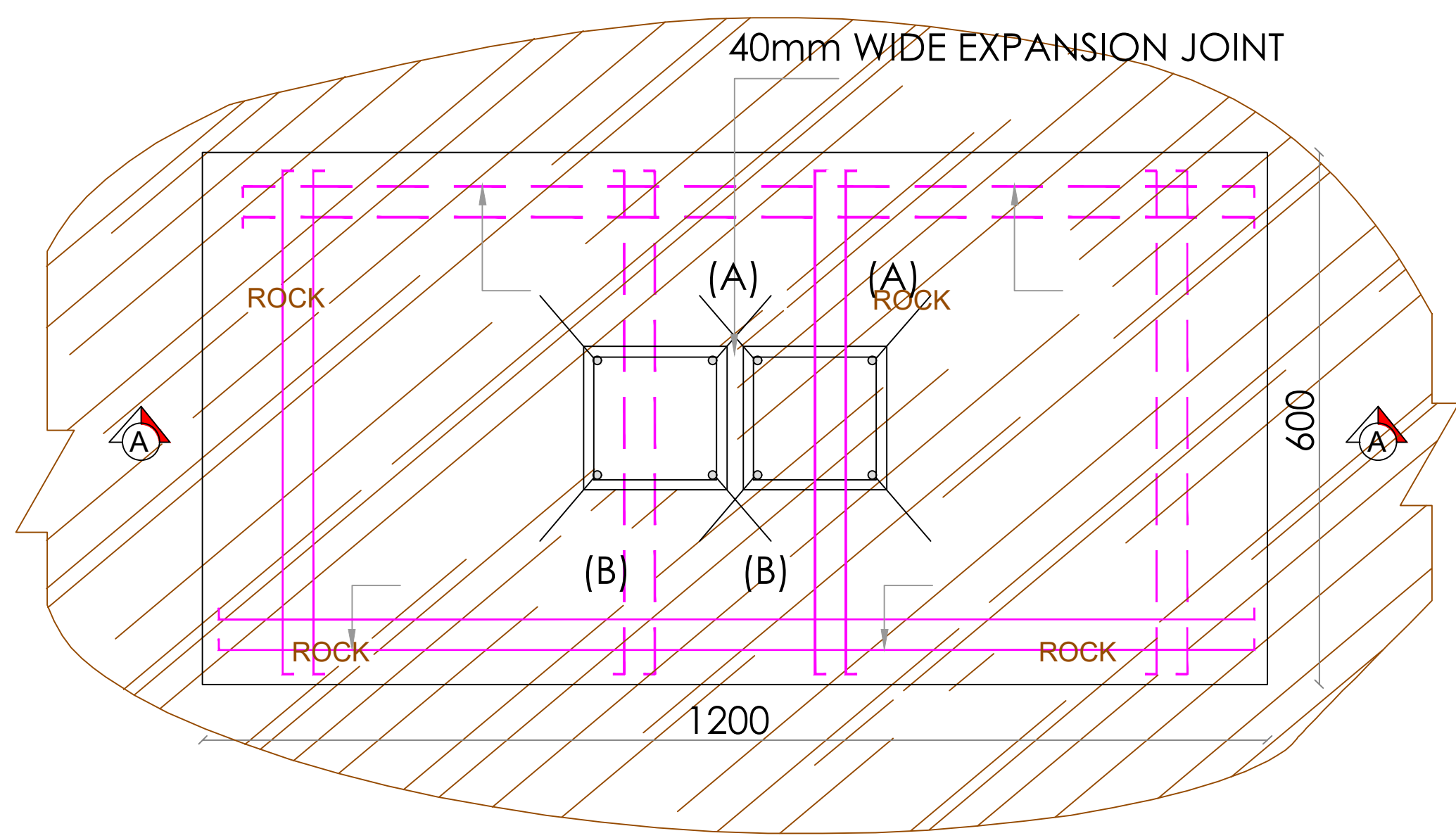
PROJECT:-			
 M/s. BEML LTD., PROJECT NEAR PALAKKAD AT KERALA.			
TITLE:-			
COMPOUND WALL DETAIL - PHASE - III (AT ROCK AREA)			
DWG NO:	SHEET NO:	DATE :	DWG FILE :
	1 OF 1	00-00-00	



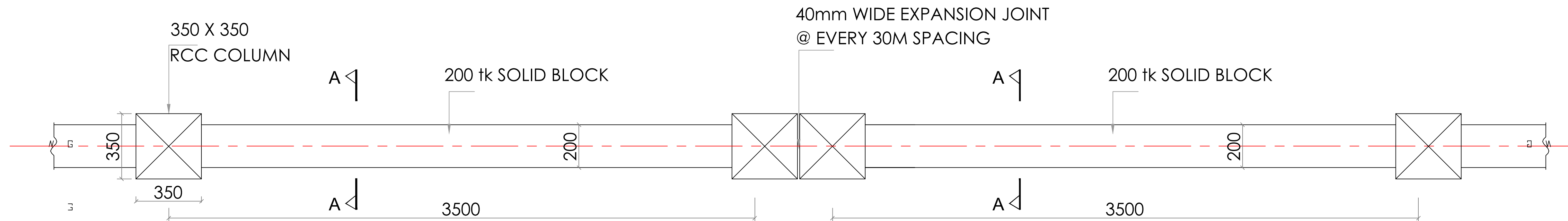
				DRAW/VN		NOTES:- 1. USE CONCRETE MIX 1:1½:3 & Fe 500 TMT BAR 2. PROVIDE CLEAR COVER TO MAIN REINFORCEMENT a. 50mm FOR FOOTING SIDES & BOTTOM b. 40mm FOR COLUMN SIDES & BOTTOM c. FOR BEAMS 20mm 3. LAP LENGTH FOR REINFORCEMENT SHALL BE 48 x DIA OF BAR 4. HOOK LENGTH FOR RINGS TO 9 x DIA 5. # REPRESENTS TOR STEEL 6. SPACER ROD SHALL BE 16mm Ø AND 600mm SPACING UOS. 7. EXPANSION JOINT TO BE PROVIDED AT EVERY 30M 8. ALL DIMENSIONS ARE IN mm UOS.	PROJECT:- <div> M/s. BEML LTD., PROJECT NEAR PALAKKAD AT KERALA.</div>			
				CHKD.			TITLE:- COMPOUND WALL DETAIL - PHASE - III (WALKWAY KERB WALL DETAIL)			
				APPD.						
				JOB NO:						
00	00-00-00	FOR TENDER PURPOSES								
REV	DATE	DESCRIPTION	REV.BY				DWG NO:	SHEET NO: 1 OF 1	DATE : 00-00-00	DWG FILE :



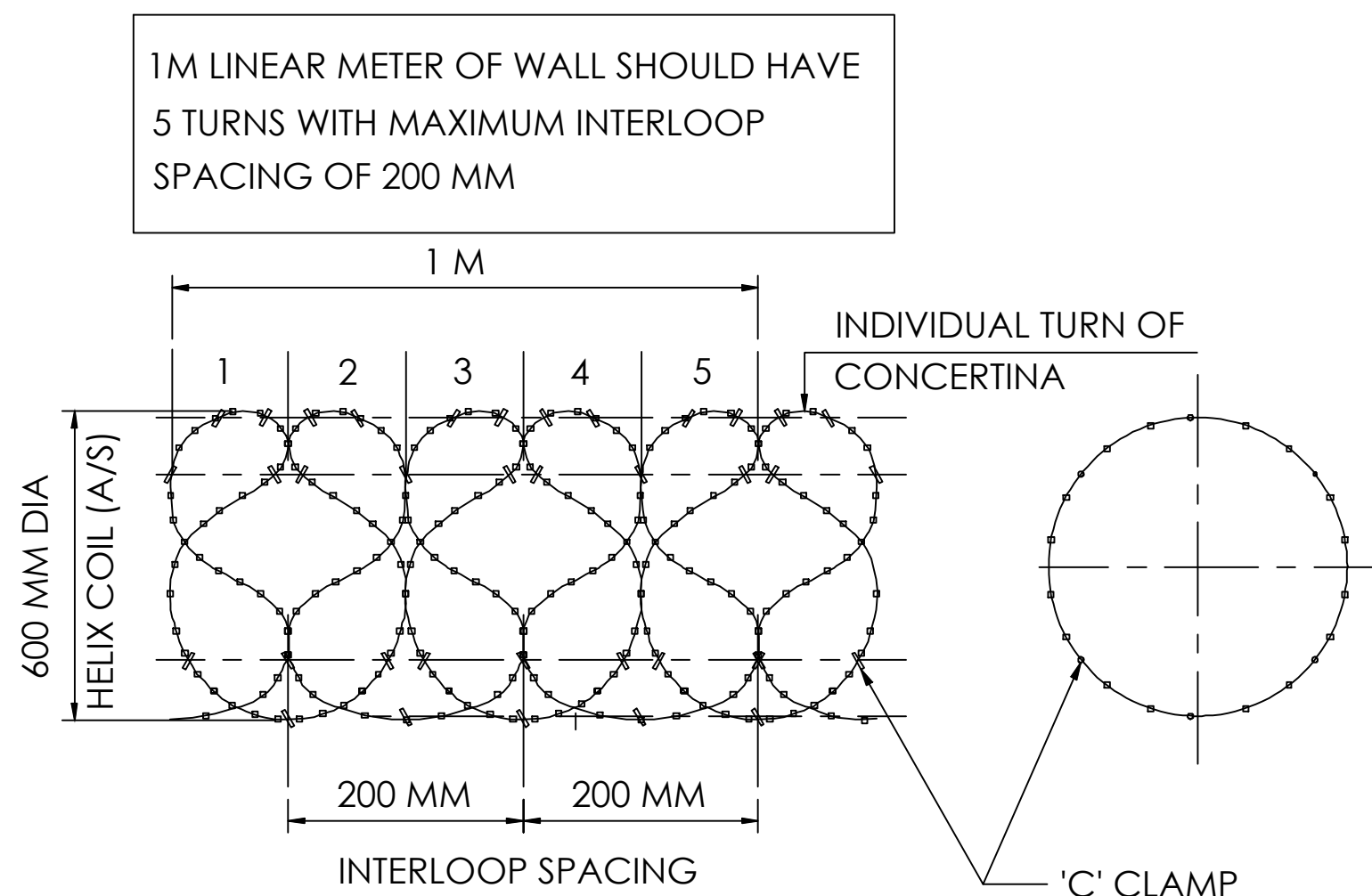
SECTION - AA



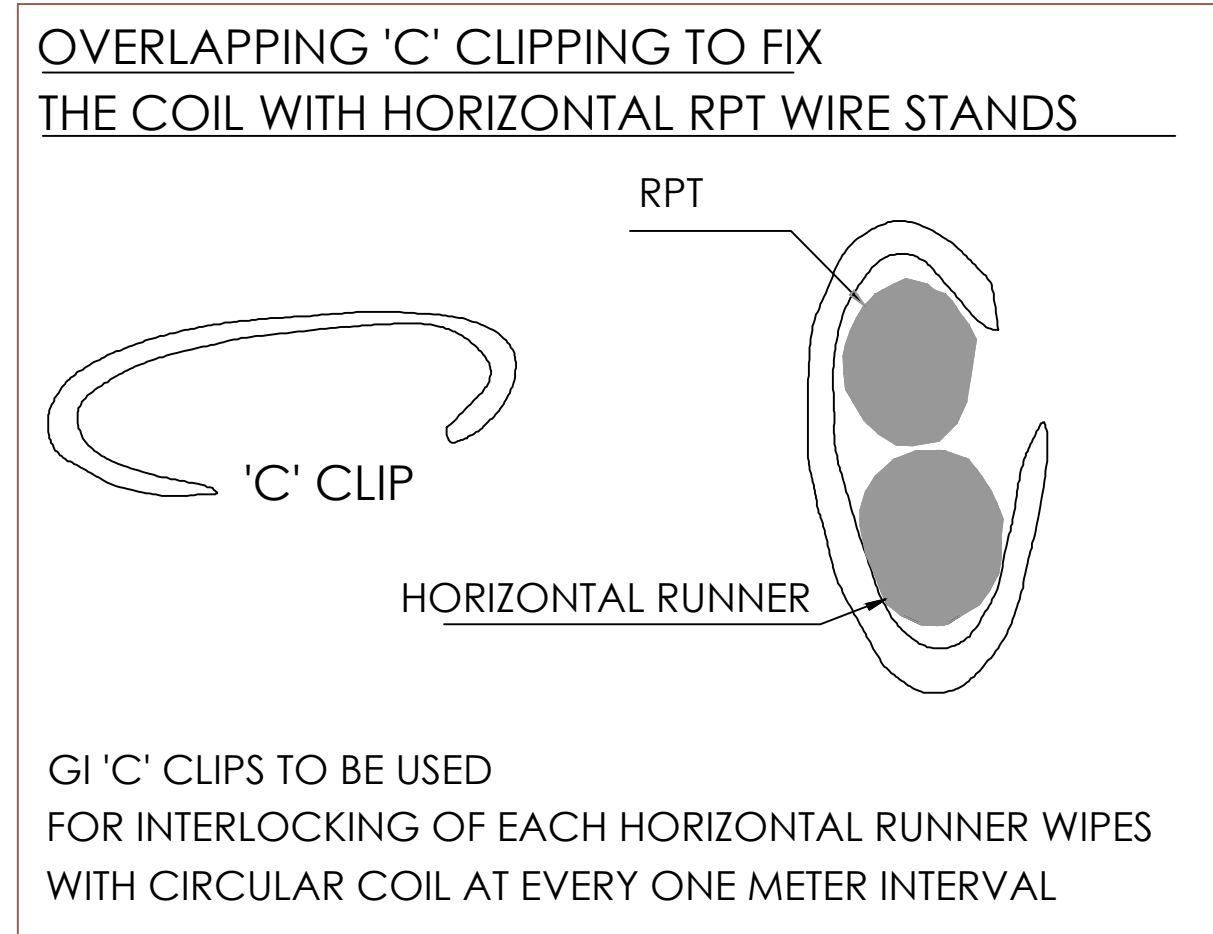
PLAN



PLAN OF COMPOUND WALL

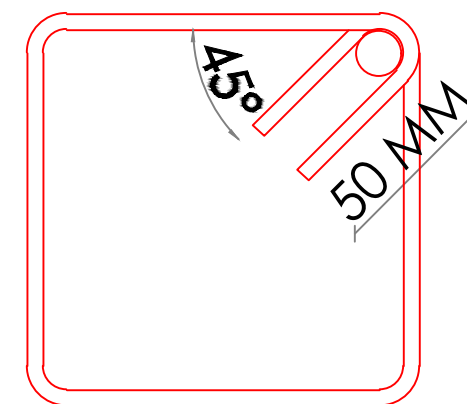


SECTION



NOTES:-

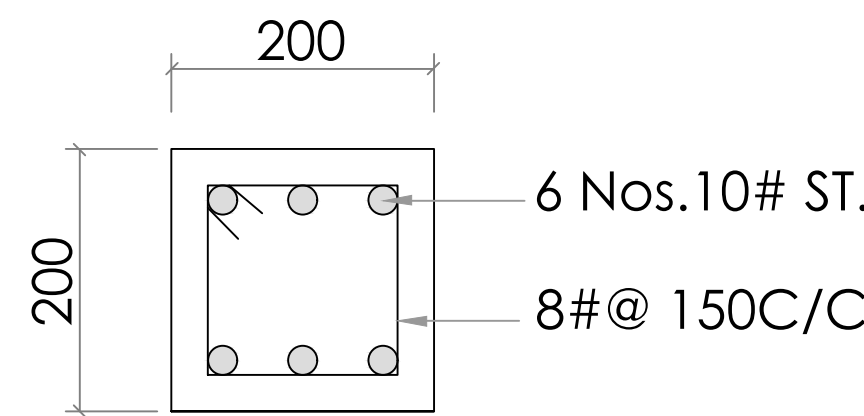
1. USE CONCRETE MIX M25 & Fe 500 TMT BAR
2. PROVIDE CLEAR COVER TO MAIN REINFORCEMENT
 - a. 50mm FOR FOOTING SIDES & BOTTOM
 - b. 40mm FOR COLUMN SIDES & BOTTOM
 - c. FOR BEAMS 20mm
3. LAP LENGTH FOR REINFORCEMENT SHALL BE 48 x DIA OF BAR
4. HOOK LENGTH FOR RINGS TO 9 x DIA
5. # REPRESENTS TOR STEEL
6. SPACER ROD SHALL BE 16mm Ø AND 600mm SPACING UOS
7. EXPANSION JOINT TO BE PROVIDED AT EVERY 30M
8. ALL DIMENSIONS ARE IN mm UOS.



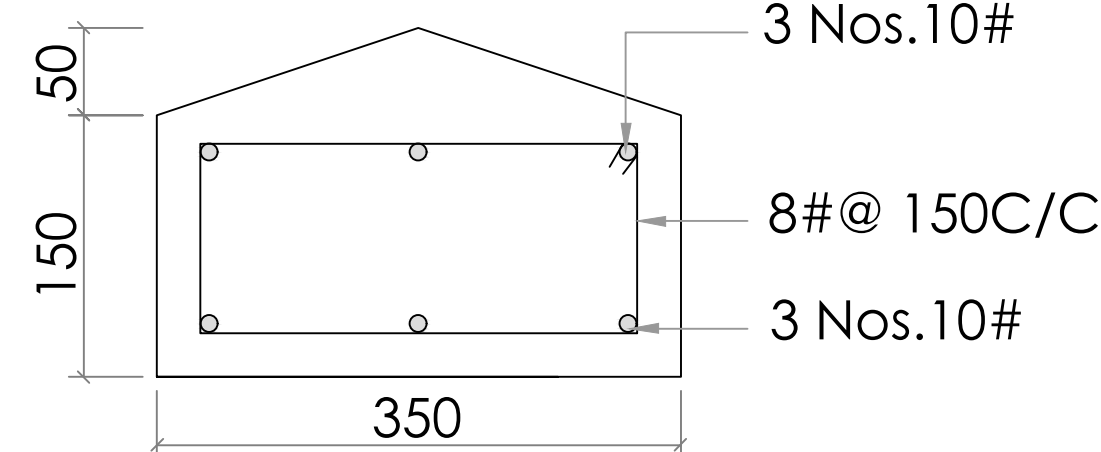
STIRRUPS HOOK LENGTH

BAR BENDING SCHEDULE

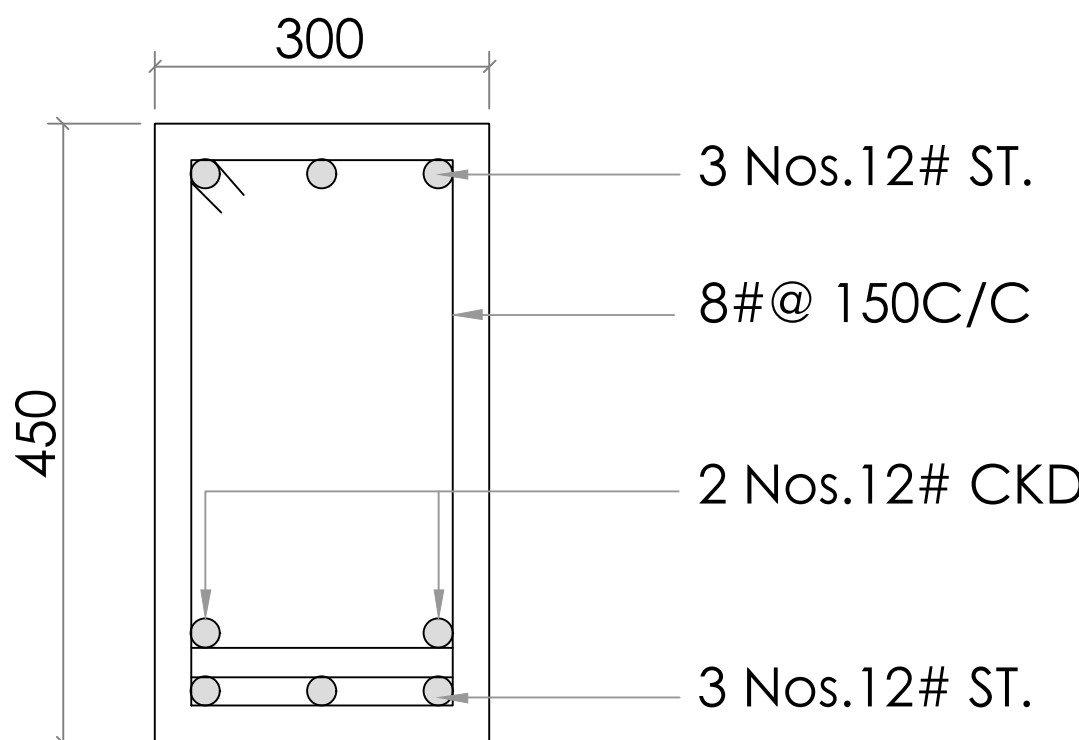
FOOTING REINFORCEMENT DETAIL	
(A) - TOP (BOTHWAYS)	(B) - BOTTOM (BOTHWAYS)
100 MM @ 150 C/C BOTHWAYS	100 MM @ 150 C/C BOTHWAYS
75 500 75	75 500 75



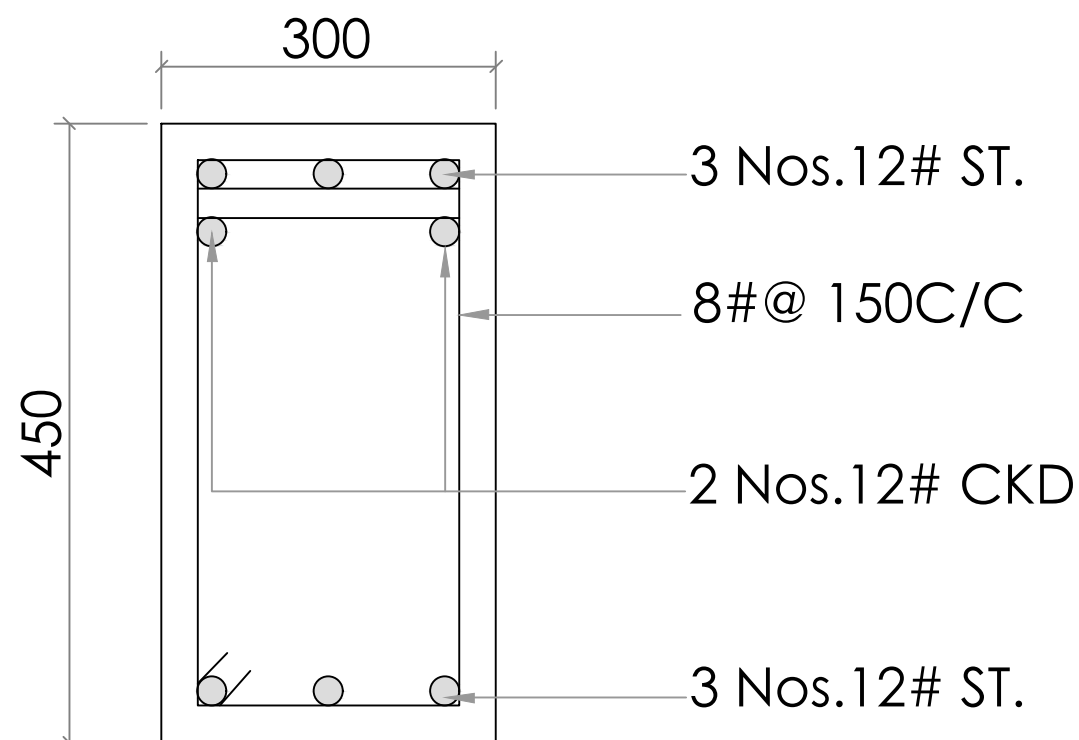
TIE BEAM DETAIL @ 1500 MM LVL



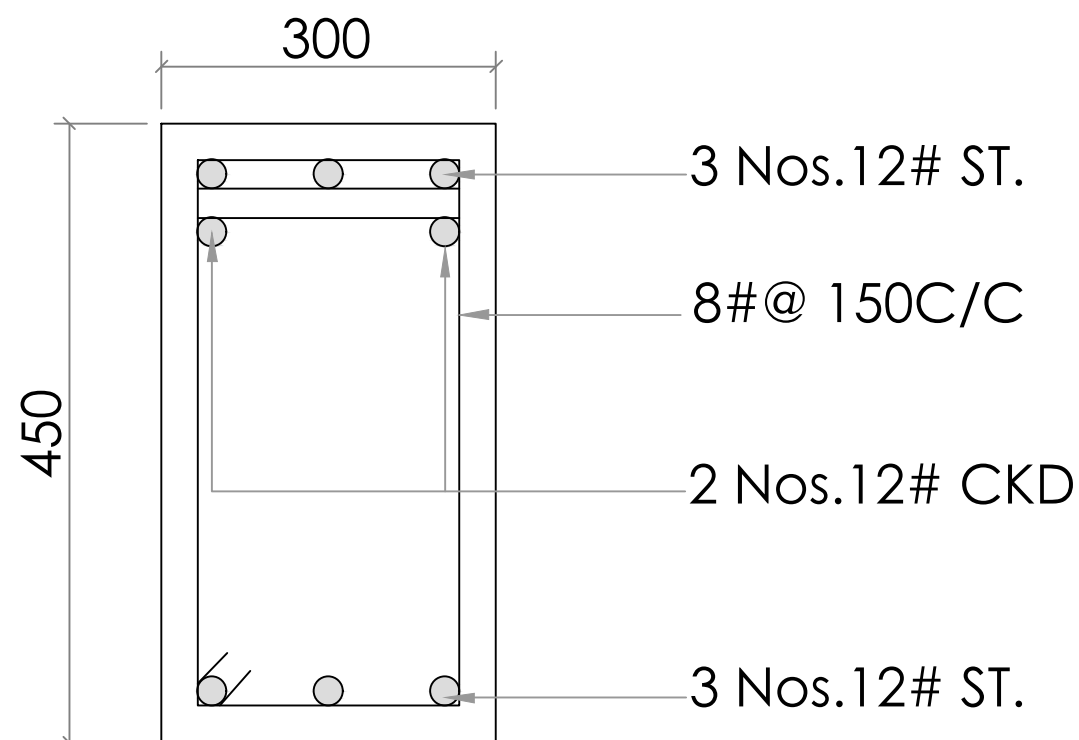
COPING BEAM DETAIL



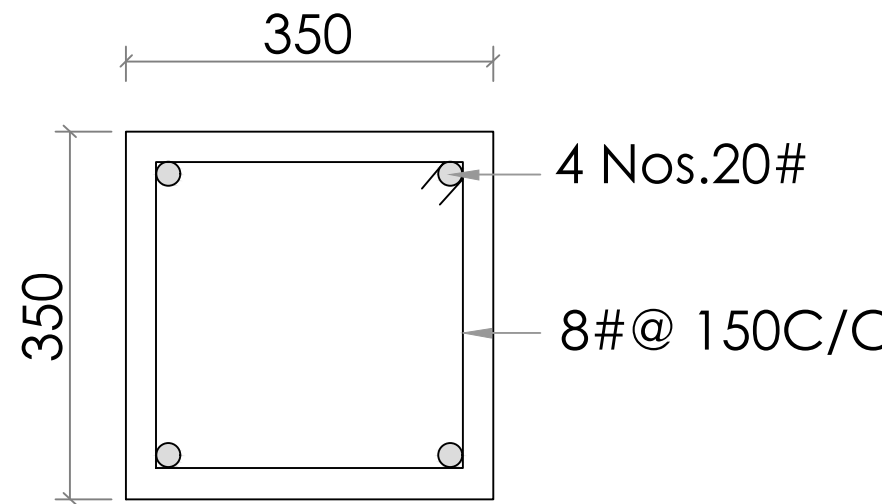
MID SEC



GRADE BEAM DETAIL



END SEC



COLUMN DETAIL - CC

				DRAW/VN	
				CHKD.	
				APPD.	
				JOB NO:	SCALE:
				XXXXXXXXXXXXXXXXXX	1 : 100
00	00-00-00	FOR TENDER PURPOSES			
REV	DATE	DESCRIPTION	REV.BY		

PROJECT:-



M/s. BEML LTD.,
PROJECT NEAR PALAKKAD AT KERALA.

TITLE:-

COMPOUND WALL DETAIL - PHASE - III
(AT ROCK AREA)
(FOR EXPANSION JOINT AREA)

DWG NO:

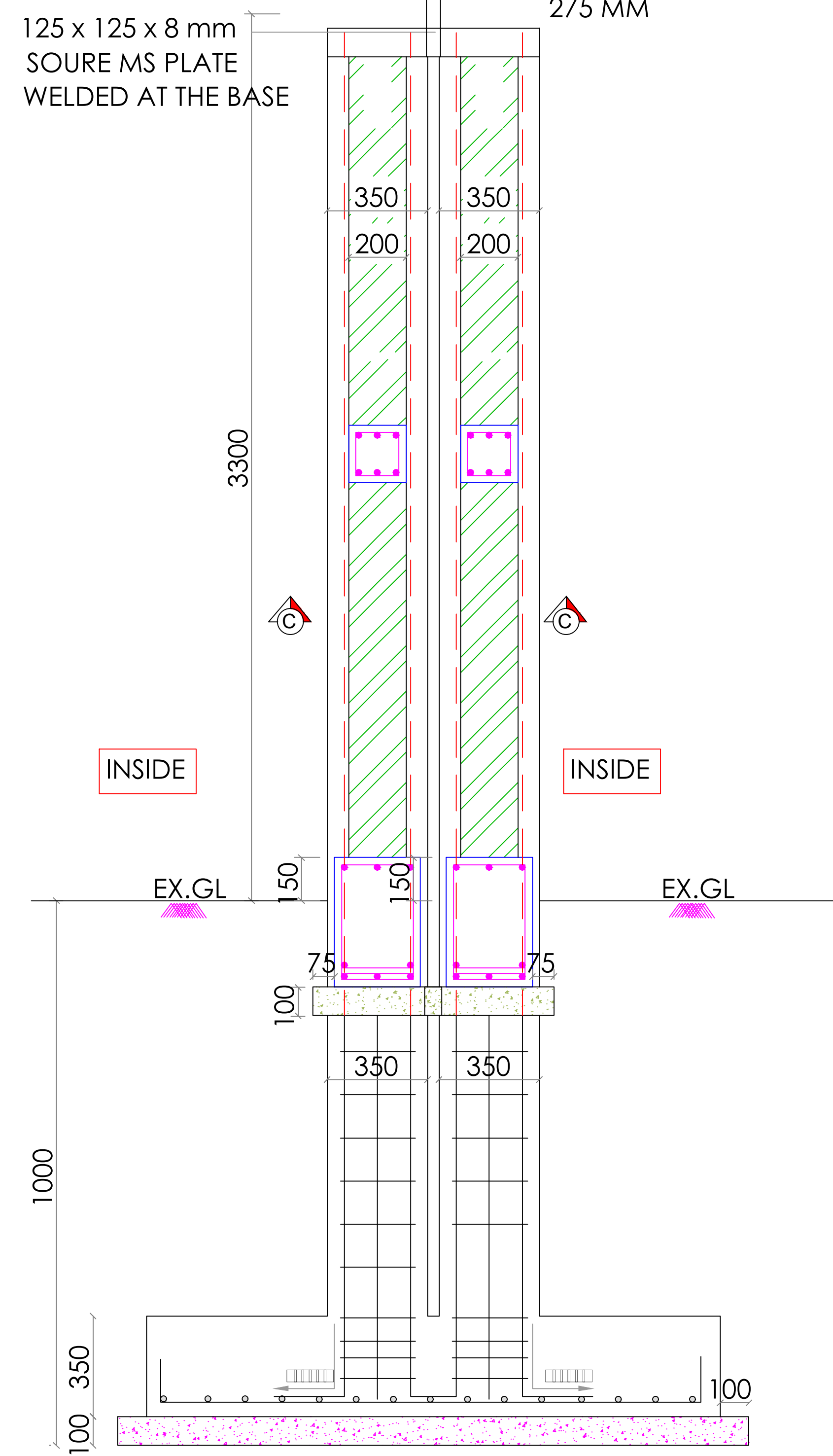
SHEET NO:

DATE :

DWG FILE :

1 OF 1

00-00-00



40mm WIDE EXPANSION JOINT

100 2000 100

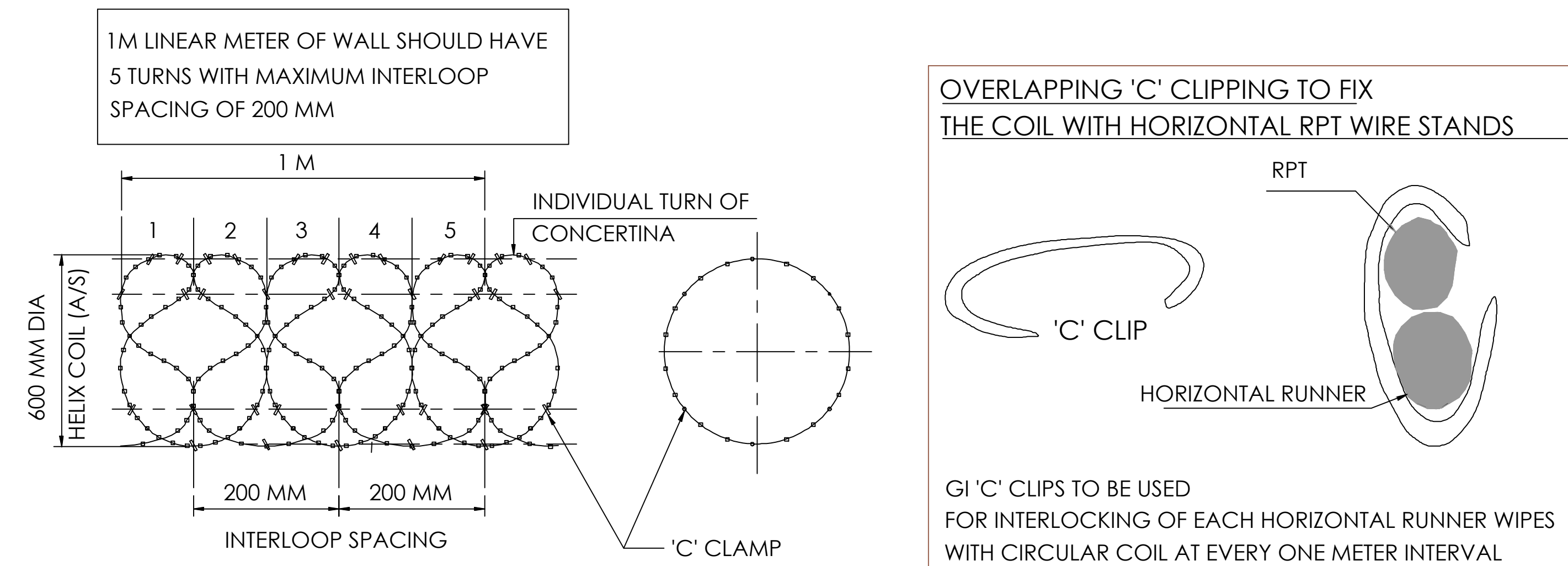
100 1300 100

1500

630 630

(A)

PLAN



350

350

4 Nos. 16#

4 Nos. 12#

8# @ 150C/C

+ 1-DIAMOND RING

200

200

6 Nos.10# ST.

8# @ 150C/C

Diagram illustrating the cross-section of a reinforced concrete beam with a triangular roof. The dimensions are 350 mm width and 200 mm height (50 mm for the roof and 150 mm for the main body). The reinforcement details are:

- 3 Nos. 10# (Top reinforcement)
- 8# @ 150C/C (Main body reinforcement)
- 3 Nos. 10# (Bottom reinforcement)

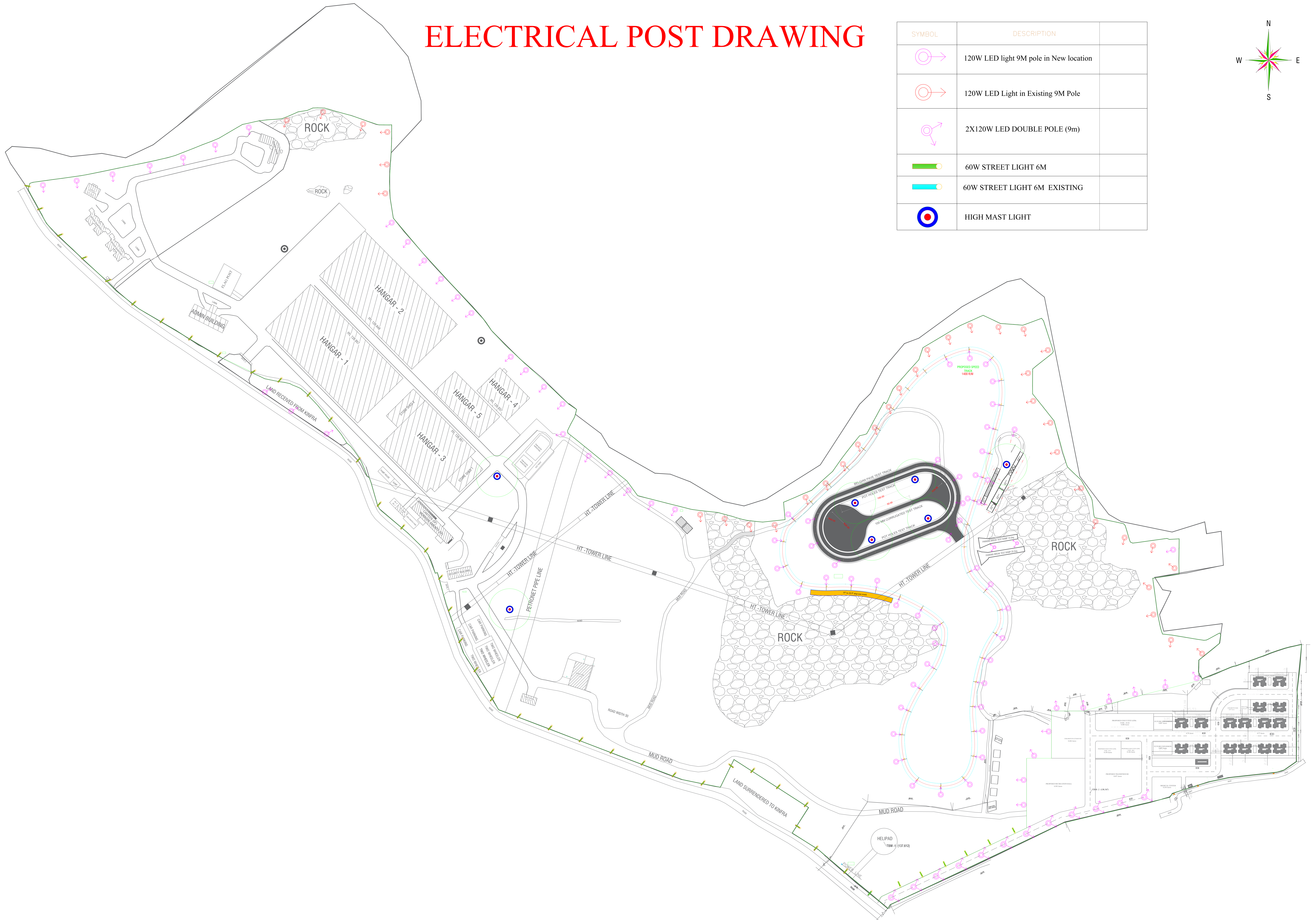
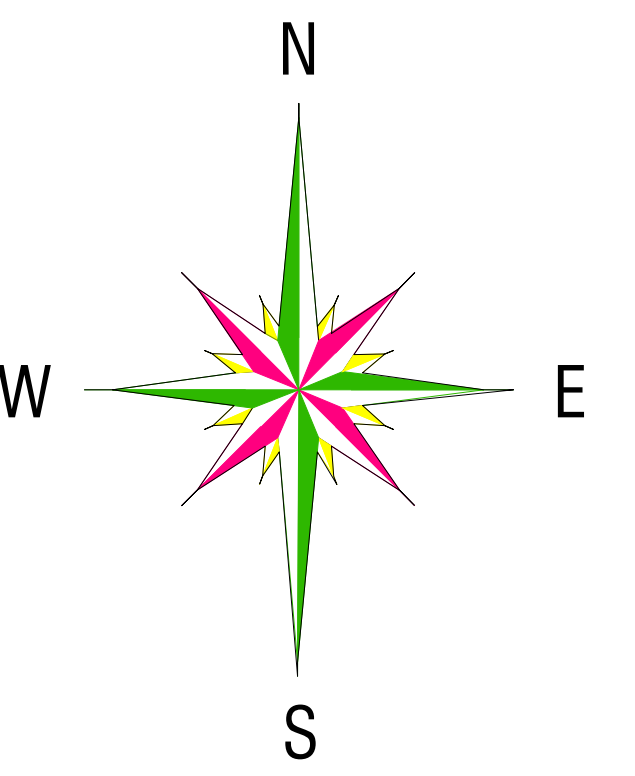
Figure 10 shows two cross-sectional diagrams of a wall, each with a width of 300 and a height of 450. The left diagram shows a wall with a vertical reinforcement bar (3 Nos. 12# ST.) and a horizontal reinforcement bar (2 Nos. 12# CKD). The right diagram shows a wall with a vertical reinforcement bar (3 Nos. 12# ST.) and a horizontal reinforcement bar (2 Nos. 12# CKD). Both diagrams include a label '8#@ 150C/C' indicating the spacing of the reinforcement bars.

(FOR EXPANDING JOINT AREA)

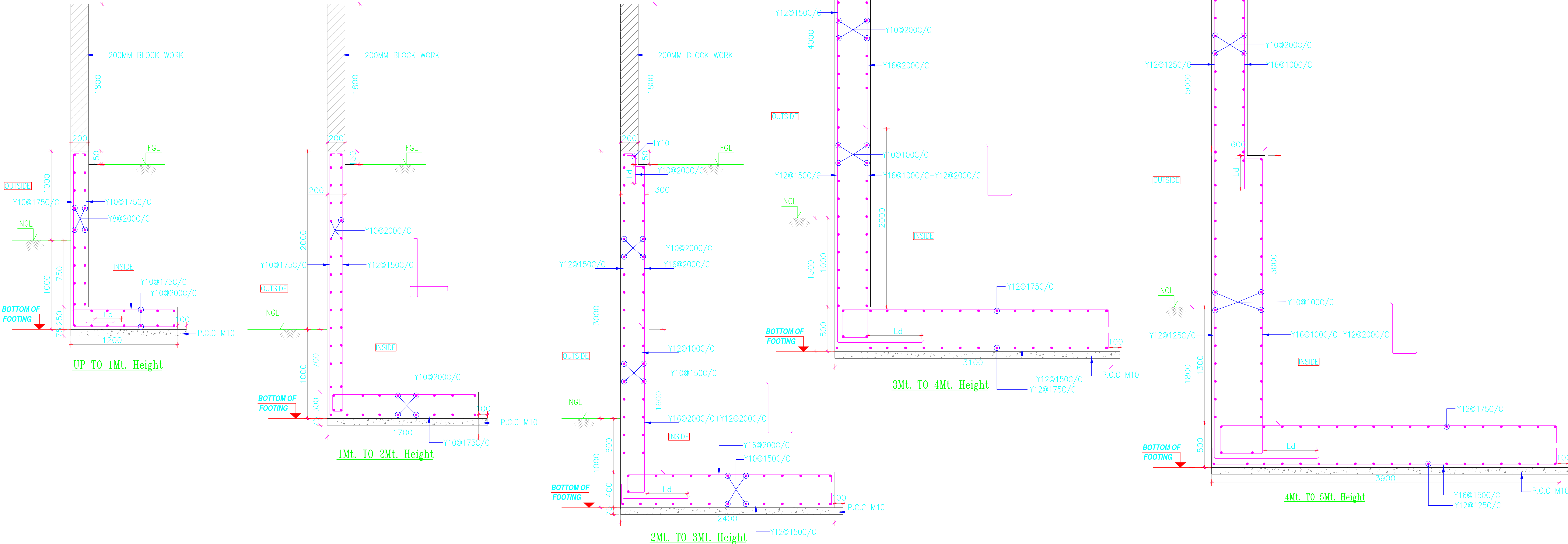
				DRAW/VN				PROJECT:- <div><div><div>बी ई एल</div><div></div></div>M/s. BEML LTD., PROJECT NEAR PALAKKAD AT KERALA.</div>
				CHKD.				
				APPD.				
				JOB NO: XXXXXXXXXXXXXXXXXXXX	SCALE: 1 : 100			
00	00-00-00	FOR TENDER PURPOSES						
REV	DATE	DESCRIPTION	REV.BY					
DWG NO:		SHEET NO: 1 OF 1	DATE : 00-00-00	DWG FILE :				

ELECTRICAL POST DRAWING


SYMBOL	DESCRIPTION	
	120W LED light 9M pole in New location	
	120W LED Light in Existing 9M Pole	
	2X120W LED DOUBLE POLE (9m)	
	60W STREET LIGHT 6M	
	60W STREET LIGHT 6M EXISTING	
	HIGH MAST LIGHT	



TYPICAL COMPOUND & RETAINING WALL REINFORCEMENT DETAIL



NOTES: * DIMENSIONS & LOCATIONS REFER LANDSCAPE ARCH DWG

GENERAL NOTE :		KEY PLAN :	PROJECT :	ARCHITECTS :	GOOD FOR CONSTRUCTION		
<p>THIS STRUCTURAL DRAWINGS SHALL BE READ IN CONJUNCTION WITH RELEVANT ARCHITECTURAL AND OTHER CONSULTANTS DRAWINGS. ANY DISCREPANCY SHALL BE CLARIFIED BEFORE EXECUTION.</p> <div><div><ul style="list-style-type: none">* THIS STRUCTURAL DRAWINGS SHALL BE READ IN CONJUNCTION WITH RELEVANT ARCHITECTURAL AND OTHER CONSULTANTS DRAWINGS. ANY DISCREPANCY SHALL BE CLARIFIED BEFORE EXECUTION.* ALL DIMENSIONS ARE IN MM* FOLLOW ONLY WRITTEN DIMENSIONS. DO NOT SCALE THIS DRAWING.* FOR SETTING OUT DIMENSIONS/CO-ORDINATES REFER ARCHITECT'S MARKING DWG.* MAIN REINFORCEMENT COVER: FOOTING : 50mm BOTTOM & SIDE 50mm, COLUMN : 40mm, SLAB : 25mm BASE SLAB : 30MM ,RC WALL : EARTH FACE-40MM ON EXTERNAL FACE-25MM</div><div><ul style="list-style-type: none">* SBC OF SOIL CONSIDERED-- 300kn/㎡* GRADE OF CONCRETE -M25</div></div>					<div><div><div><div>बी ई एम एल</div><div>BEML</div><div>Beyond Possibilities</div></div></div></div>		
			LANDSCAPE CONSULTANTS :	CLIENTS :			