

B	A
---	---

1. PIPE CLAMP MATERIAL SHALL BE POLYAMIDE - FR CONFIRMING TO DIN3015-1
2. ALL DIMENSIONS ARE IN MM
3. CLAMP MATERIAL SHALL BE HL3 AND FIRE, SMOKE RESISTANT
4. BOLT MINIMUM THREADING LENGTH REQUIRED IS 15MM
5. CRITICAL TO QUALITY DIMENSIONS ARE SHOWN▲ALSO CONSIDER VISUAL/AESTHETIC
6. CONSIDER CPC I.E ±20% AS PERFORMED CLASS
7. TIGHTENING TORQUE - 10Nm



O.D (mm)±0.3	C ±1.5	t ±0.2	d ±0.2	b ±0.8	W ±0.5	g	BOLT SIZE
8	27	3	20	34	30	0.0 to 1.4	M6x30L

UNCONTROLLED COPY

4	2	HEX HEAD BOLT	ASTM A479 SS316L	B			
3	1	TOP PLATE	ASTM A240 SS316L				
2	2	CLAMP BODY	POLYAMIDE – FR				
1	2	RAIL NUT WITH RUBBER BUSH	ASTM A479 SS316L				
SL.No.	QTY	PART / STOCK No.	DESCRIPTION	SIZE			
△			PRODUCT	TRAIN B28			
			REF DRG				
			MATERIAL				
			HEAT TREAT.				
			SURFACE TREAT.				
△			TITLE	SUS316L			
				APPD	GMM	24/02/2026	
				REVD	SK	24/02/2026	
				CHKD	SK	24/02/2026	
				DRWN	SK	24/02/2026	
△				SCALE			
				NTS			
				SHEET		wt.(kg)	
				1 OF 1		0	
				DRG No.		ALT	
ALT No.	EOM No./CHANGES	DATE	BY	APD	843-60084		0
BANGALORE COMPLEX							
BEML							
बी ई एल							

[illegible]

SURFACE ROUGHNESS		
GRADE No.	VALUE	SYMBOL

1. PIPE CLAMP MATERIAL SHALL BE POLYAMIDE - FR CONFIRMING TO DIN3015-1

2. ALL DIMENSIONS ARE IN MM
3. CLAMP MATERIAL SHALL BE HL3 AND FIRE, SMOKE RESISTANT
4. BOLT MINIMUM THREADING LENGTH REQUIRED IS 15MM
5. CRITICAL TO QUALITY DIMENSIONS ARE SHOWN▲ALSO CONSIDER VISUAL/AESTHETICS & CLAMP ASSY.
6. CONSIDER CPC IE ±20% AS PERFORMED CLASS
7. TIGHTENING TORQUE - 10Nm



PROTO/PRODUCTION

5

UNCONTROLLED COPY

TRAIN B28

CLAMP ASSY.
(DIA 10)

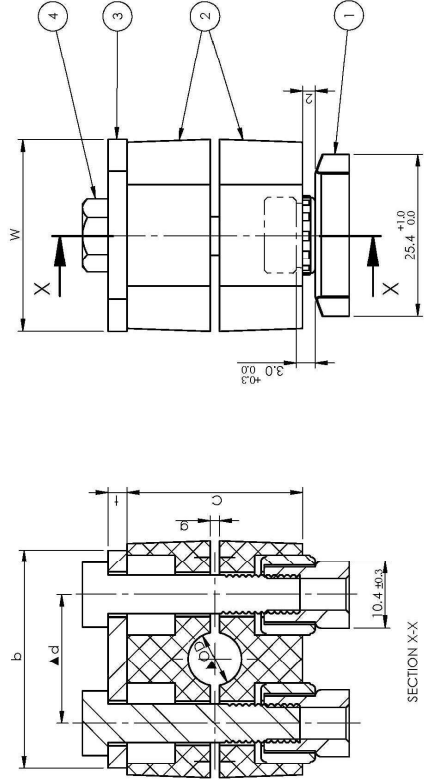
बी ई एम एल
BEML
BANGALORE
COMPLEX

GRADE No.	VALUE	SYMBOL
N12	50	△
N11	25	△
N10	12.5	△
N9	6.3	△
N8	3.2	△
N7	1.6	△
N6	0.8	△
N5	0.4	△
N4	0.2	△
N3	0.1	△
N2	0.05	△
N1	0.025	△

COPY RIGHT & CONFIDENTIAL:

THIS DOCUMENT IS THE EXCLUSIVE PROPERTY OF BEML Limited & CONTAINS CONFIDENTIAL INFORMATION.

THIS DOCUMENT & ALL ITS COPIES SHALL BE RETURNED TO BEML Limited ON DEMAND.



NOTE

1. PIPE CLAMP MATERIAL SHALL BE POLYAMIDE - FR CONFIRMING TO DIN3015-1
2. ALL DIMENSIONS ARE IN MM
3. CLAMP MATERIAL SHALL BE HL3 AND FIRE, SMOKE RESISTANT
4. BOLT MINIMUM THREADING LENGTH REQUIRED IS 15MM
5. CRITICAL TO QUALITY DIMENSIONS ARE SHOWN▲ALSO CONSIDER VISUAL/AESTHETICS & CLAMP ASSY.
6. CONSIDER CPC I.E ±20% AS PERFORMED CLASS
7. TIGHTENING TORQUE - 10Nm

MACHINING DEVIATIONS FOR LINEAR DIMENSIONS		1																	
CLASS - MEDIUM		RANGE		0.5 - 3		3 - 6		6 - 30		30 - 120		120 - 400		400 - 1000		1000 - 2000		2000 - 4000	
		TOLERANCE		±0.1		±0.1		±0.2		±0.3		±0.5		±0.8		±1.2		±2	

1. PIPE CLAMP MATERIAL SHALL BE POLYAMIDE - FR CONFORMING TO DIN3015-1
2. ALL DIMENSIONS ARE IN MM
3. CLAMP MATERIAL SHALL BE HL3 AND FIRE, SMOKE RESISTANT
4. BOLT MINIMUM THREADING LENGTH REQUIRED IS 15MM
5. CRITICAL TO QUALITY DIMENSIONS ARE SHOWN▲ALSO CONSIDER VISUAL/AESTHETIC
6. CONSIDER CPC I.E ±20% AS PERFORMED CLASS
7. TIGHTENING TORQUE - 10Nm



O.D. (mm)±0.3	C ±1.5	t ±0.2	d ±0.2	b ±0.8	W ±0.5	g	BOLT SIZE
22	35	3	33	48	30	0.6 to 1.6	M6x45L

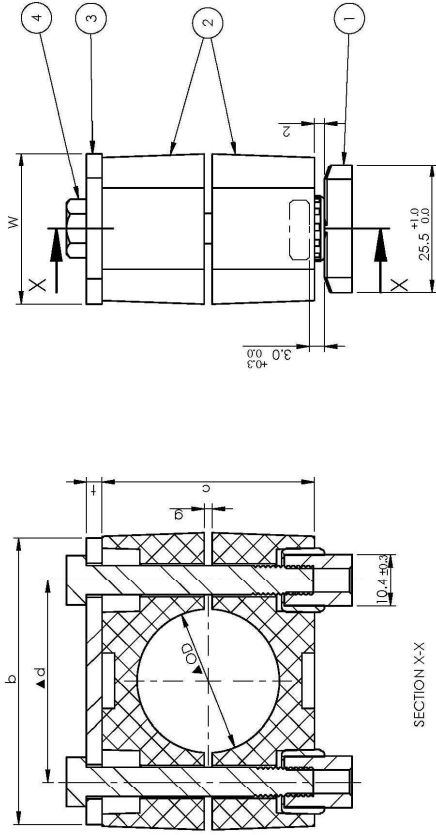
UNCONTROLLED COPY

[illegible]

COPY RIGHT & CONFIDENTIAL:

AL INFORMATION.

THIS DOCUMENT & ALL ITS COPIES SHALL BE RETURNED TO BEMU LIMITED ON DEMAND



SECTION X-X

NOTE

1. PIPE CLAMP MATERIAL SHALL BE POLYAMIDE - FR CONFIRMING TO DIN3015--1
2. ALL DIMENSIONS ARE IN MM
3. CLAMP MATERIAL SHALL BE HL3 AND FIRE, SMOKE RESISTANT
4. BOLT MINIMUM THREADING LENGTH REQUIRED IS 15MM
5. CRITICAL TO QUALITY DIMENSIONS ARE SHOWN▲ALSO CONSIDER VISUAL/AESTHETICS & CLAMP ASSY.
6. CONSIDER CPC I.E ±20% AS PERFORMED CLASS
7. TIGHTENING TORQUE - 10Nm

4	2	HEX HEAD BOLT	ASTM A479 SS316L	B
3	1	TOP PLATE	ASTM A240 SS316L	
2	2	CLAMP BODY	POLYAMIDE - FR	
1	2	RAIL NUT WITH RUBBER BUSH	ASTM A479 SS316L	
SL.No	QTY	PART / STOCK No.	DESCRIPTION	SIZE
TRAIN B28				
		PRODUCT		
		REF DRG	----	
		MATERIAL	SUS316L	
		HEAT TREAT	---	
		SURFACE TREAT	---	
		TITLE	CLAMP AASY. (DIA 28)	
			APPD	GMM
			REVD	SK
			CHKD	SK
			DRWN	SK
			SCALE	
			NTS	
			SHEET	1 OF 1
			WT.(kg)	0
			DRG No.	
			ALT	
			0	

UNCONTROLLED COPY

O.D. (mm)±0.3	C ±1.5	t ±0.2	d ±0.2	b ±0.8	W ±0.5	g	BOLT SIZE
28	42	3	40	57	30	0.6 To 1.6	M6×45L