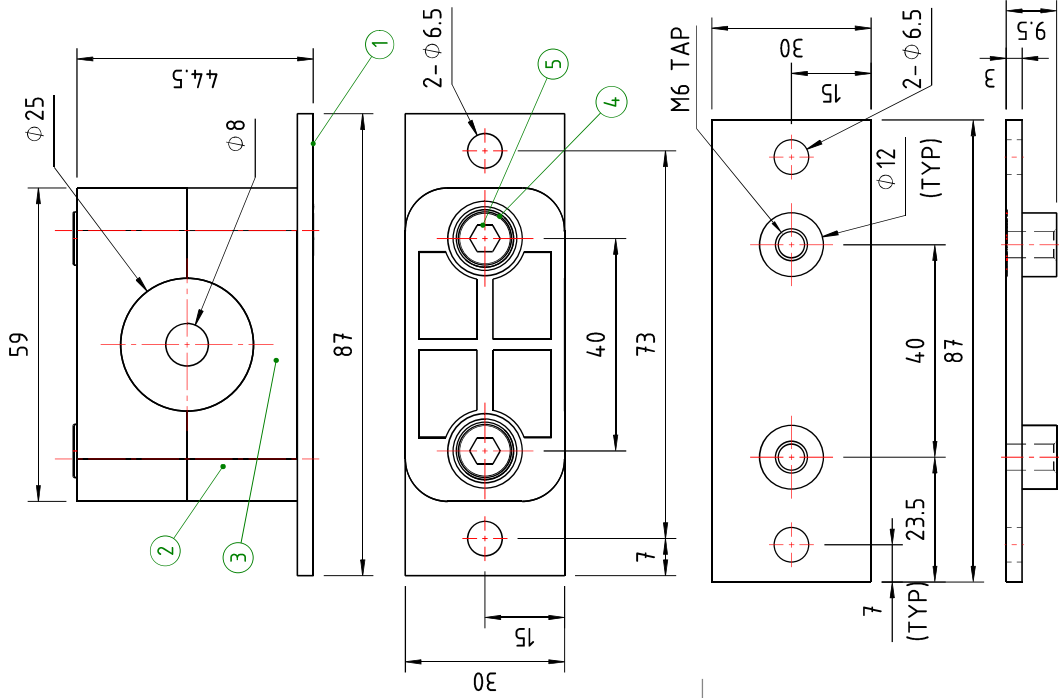


SURFACE ROUGHNESS		GRADE No.	VALUE	SYMBOL
COPY RIGHT & CONFIDENTIAL; THIS DOCUMENT IS THE EXCLUSIVE PROPERTY OF BEML Limited & CONTAINS CONFIDENTIAL INFORMATION. THIS DOCUMENT & ALL ITS COPIES SHALL NOT BE USED, REPRODUCED OR DISCLOSED IN WHOLE OR IN PART, WITHOUT PRIOR WRITTEN PERMISSION OF BEML Limited	N12	50		
	N11	25		
	N10	12.5		
	N9	6.3		
	N8	3.2		
	N7	1.6		
	N6	0.8		
	N5	0.4		
	N4	0.2		
	N3	0.1		
	N2	0.05		
	N1	0.025		

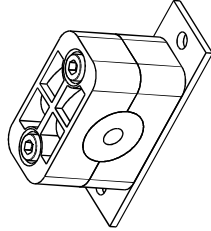
COPY RIGHT & CONFIDENTIAL;

THIS DOCUMENT IS THE EXCLUSIVE PROPERTY OF BEML Limited & CONTAINS CONFIDENTIAL INFORMATION.

HIS DOCUMENT & ALL ITS COPIES SHALL BE RETURNED TO BEMU LIMITED ON DEMAND.



DEATIL P2



ISOMETRIC VIEW

NOTES:


1. PIPE CLAMP MATERIAL SHALL BE POLYAMIDE-FR CONFIRMING TO DIN3015-1
2. ALL DIMENSIONS ARE IN MM
3. CLAMP MATERIAL SHALL HL3 AND FIRE , SMOKE RESISTANT
4. CONSIDER CPC IE +/- 20% AS PERFORMED CLASS

UNCONTROLLED COPY

5	2	SOCKET HEAD CAP SCREW	ENISO4762-M6x35-A2-70, SS
4	2SET	NORD LOCK WASHER	NORD-LOCK-NL6ss-SST
3	1SET	ELASTOMER INSERT WITH FILM HINGE	THERMOPLASTIC ELSTOMER (SA-73)
2	1	PLATE	SUS304
1	1	CLAMP	

SL.No	QTY	PART / STOCK No.	DESCRIPTION	SIZE (mm)	COMPANY STD./IS	WT. (kg)	MATERIAL
△			PRODUCT	TRAIN B28			
			REF DRG				
			MATERIAL				
			HEAT TREAT				
△			SURFACE TREAT	APPD	GMM	10.03.26	
				REVD	SK	10.03.26	
				CHKD	SK	10.03.26	
△			TITLE	DRWN	SK	10.03.26	
			CLAMP, ASSY	SCALE	1:1		
△							

ECN No./CHANGES	DATE	CHKD	APPD



बी ई एल
BENL
BANGALORE COMPLEX

843-60091

DRG No. 1 OF 1

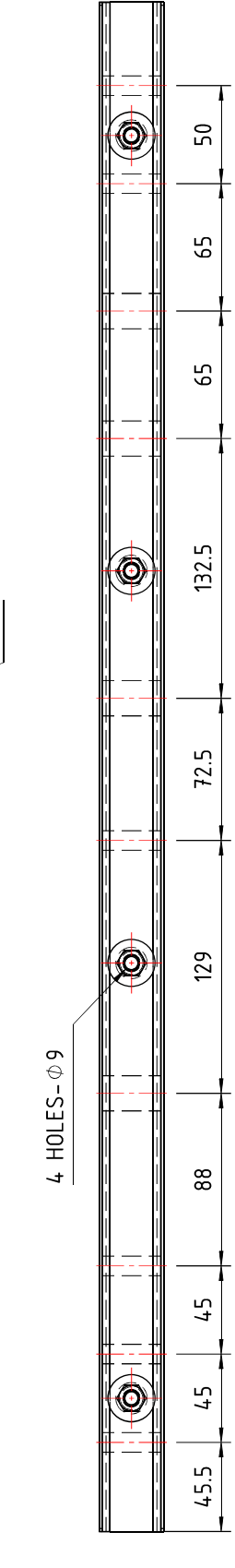
ALT

	2	1	A3

0.25	0.5	1	0.2	0.4	0.6
N1	N2	N3	N4	N5	N6

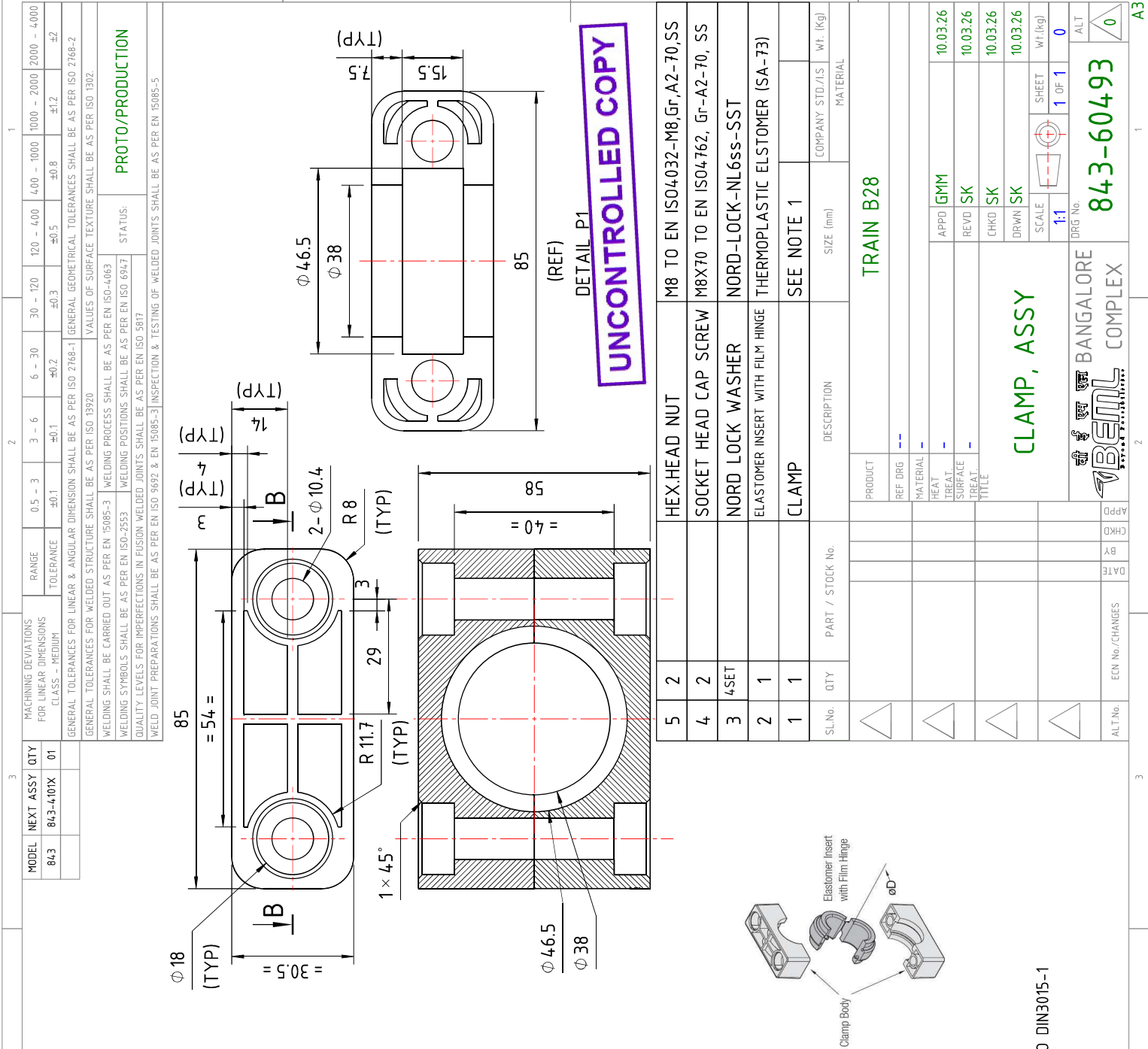
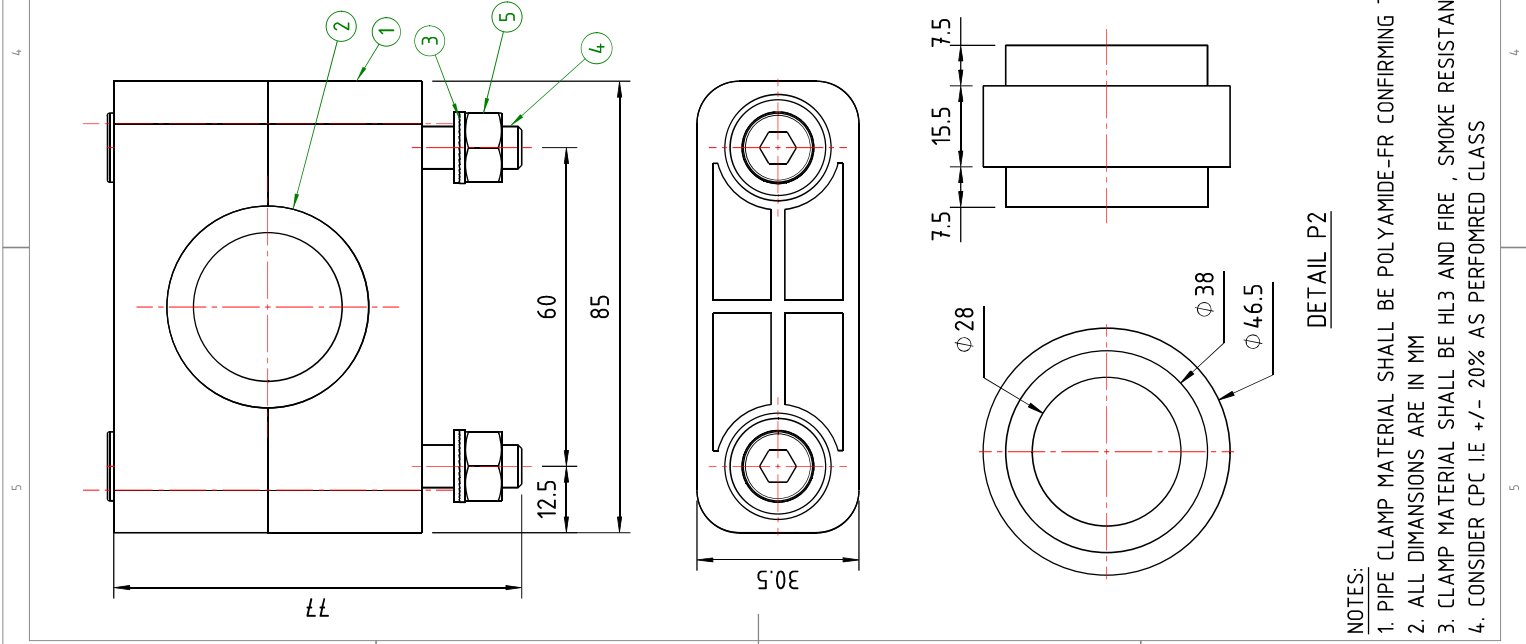
UNCONTROLLED COPY

1. NYLOK SHALL BE APPLIED TO ALL BOLTS FOR LOCK TIGHT
2. FIRST REMOVAL PREVAILING TORQUE OF NYLOK IS 2.5N-m FOR M8 BOLT
3. NYLOK 6 GRADE 1011SW SHALL COMPLY TO FIRE STANDARD EN 45545 HL3




BENL
 बी ई एल
 BANGALORE
 COMPLEX
 DRG No. **843-60070**
 ALT  0

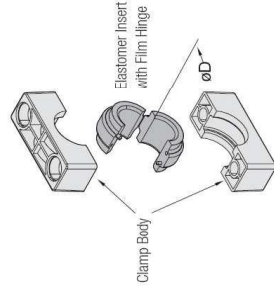
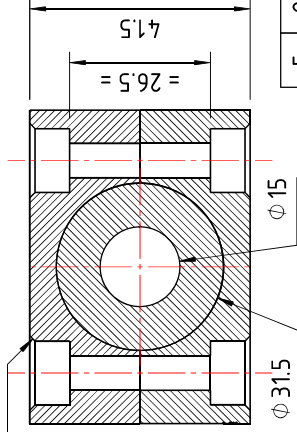
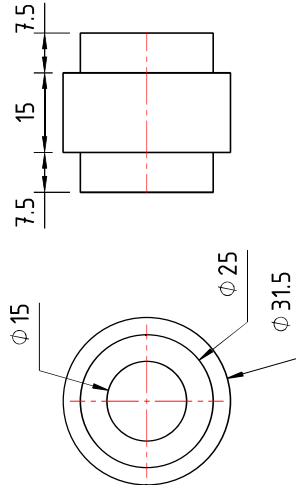
बी ई एच एम
BEML
BANGALORE
COMPLEX



THIS DOCUMENT IS THE EXCLUSIVE PROPERTY OF BEM Limited & CONTAINS CONFIDENTIAL INFORMATION

1. PIPE CLAMP MATERIAL SHALL BE POLYAMIDE-FR CONFIRMING TO DIN3015-1
2. ALL DIMENSIONS ARE IN MM
3. CLAMP MATERIAL SHALL BE HL3 AND FIRE , SMOKE RESISTANT
4. CONSIDER CPC I.E +/- 20% AS PERFORMED CLASS

	1	2	3
AEE			



UNCONTROLLED COPY

DETAIL P2

बी ई एल
BEML
Beyond Possibilities

