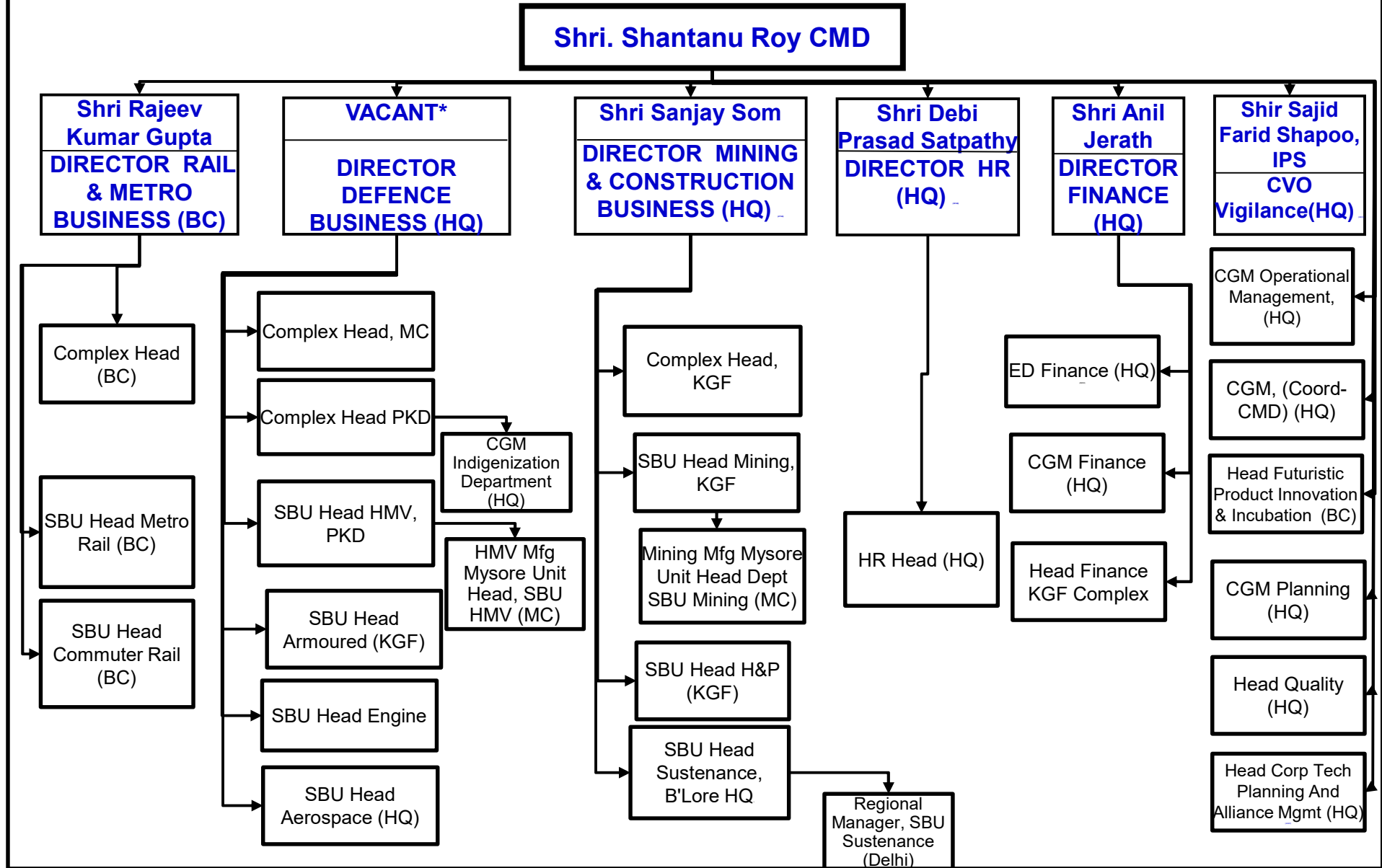


**BEML LIMITED**  
**ORGANISATIONAL CHART – POSITION AS ON 01.04.2025**  
**[Upto two levels below Board level (i.e upto CGM level )]**



**BEML LIMITED**  
**ORGANISATIONAL CHART – POSITION AS ON 01.04.2025**

Legend :

**For Designations**

- CMD - Chairman & Managing Director
- GR X – Executive Director (ED)
- GR IX – Chief General Manager (CGM)

**For Various Location / Functions under BEML**

- HQ - Head Office
- B'Lore HQ –Marketing Head Quarters, Bangalore.
- Def. HQ –Defence Head Quarters, Bangalore.
- MC – Mysore Complex
- BC – Bangalore Complex
- KGF- Kolar Gold Fields (Complex)
- PKD – Palakkad Complex
- SEZ – Special Economic Zone
- R&M – Rail & Metro Business
- M&C – Mining & Construction Business
- R&D – Research & Development
- PD – Product Design
- OSD – Officer on special duty
- SBU – Strategic Business Unit
- Coord -Coordination

\* Shri Sanjay Som Director (Mining & Construction business), BEML Ltd is entrusted with additional charge of the post of Director (Defence), BEML Ltd till a regular incumbent is appointed (or) until further orders.