

BE1000-1

HYDRAULIC EXCAVATOR



- Efficient Hydraulic System
- Closed loop swing system
- Aesthetically improved cabin
- Optimized service & Maintainability index
- Powerful, Economical Engine
- Effort-free operation
- Maximum Working Performance
- High Total Reliability and Durability
- Easy Maintenance
- Operator Comfort

BACKHOE

Flywheel Horsepower : 485 kW (650 hp) @ 1800 rpm

Operating mass : 95000 kg

Bucket capacity : 3.1 m³ - 5.55 m³



LOADING SHOVEL

Flywheel Horsepower : 485 kW (650 hp) @ 1800 rpm

Operating mass : 98000 kg

Bucket capacity : 4.5 m³ - 7.0 m³

BE1000-1 HYDRAULIC EXCAVATOR

Salient Features :

Efficient Hydraulic System for increased Productivity :

Three pump hydraulic system with independent closed loop swing function not only assures smooth compound work equipment movements and travel but also shortens the cycle time.

Powerful economical engine :

Cummins diesel engine delivers 485 kW (650 fhp). A Modular Common rail system for reduced fuel consumption ensures high operational economy. The turbo charger allows engine to attain high performance even on high altitude job sites.

Effort free operation :

Work equipment controls are simple and light touch due to the hydraulically assisted control system.

Maximum working performance :

Wide working range and large undercarriage assures stable operation for maximum working performance.

Easy maintenance :

Centralised monitoring system within the operator's cab allows fast daily checks and also keeps the operator constantly informed of any abnormality during operation.

Operator's comfort : Specially designed cab provides plenty of work space and excellent visibility.

Minimum downtime :

Automatic lubrication system supplies optimum amount of grease to vital hinge pins and swing circle bearings reducing failures and downtime.

Safety :

Automatic fire detection and suppression system prevents fire accidents and hence minimizes loss of valuable resources.



ENGINE

CUMMINS QSK19C T3, 4 cycle, water cooled, modular common rail injection system, turbocharged, diesel engine with CAC. Six cylinders of 159 mm bore x 159 mm stroke and 19 L piston displacement.

Flywheel horse power : 485 kW (650 hp) @ 1800 rpm. All speed control governor. Gear pump driven forced lubrication with full flow filter. Dry type air cleaner with an automatic dust evacuator for longer element service intervals and a dust indicator for simplified maintenance. 24 Volt electrical starting system.



HYDRAULIC SYSTEM

Unique three-pump system and independent closed loop swing function assure smooth compound movements of the work equipment. The hydraulic system is proportional positive flow control system for implement circuit and closed loop swing system for swing circuit with electronic load limiting control for all three pumps for efficient use of engine power. This system also reduces hydraulic loss during operation, resulting in lower fuel consumption. Oil to air hydraulic oil cooler maintains optimum heat balance of hydraulic oil.

Hydraulic pumps

- Two variable-capacity tandem pumps power the boom, arm, bucket and travel circuits.
Capacity (discharge flow) at rated r/min - 2x628 l/min
- One variable-capacity piston pump powers the swing closed loop circuit. Piggy back variable-capacity piston pump powers Fan drive
Capacity (discharge flow) at rated r/min - 1 x 405 + 69 l/min
- Tandem gear pump powers the pilot + PTO lub circuit.
Capacity (discharge flow) at rated rpm - 1 x (49+24.5) l/min

Hydraulic Motors :

Travel : Four variable displacement axial piston motors with built-in counter balance valve for overrun protection and an externally fitted mechanical parking brake of spring applied and hydraulically released wet multiple disc type for braking. (Two for each track)

Swing : Two fixed displacement axial piston motors with flushing valves for closed loop swing system and an externally fitted swing holding brake of spring applied and hydraulically released wet multiple disc type.

Control Valves : High flow capacity eight spool type two numbers for minimum pressure drop for rated flow.

Relief valve settings

| | |
|--------------------|---------------------------------------|
| Implement circuits | : 31.39 MPa (320 kg/cm ²) |
| Travel circuits | : 31.39 MPa (320 kg/cm ²) |
| Swing circuits | : 29.43 MPa (300 kg/cm ²) |
| Pilot circuits | : 2.95 MPa (30 kg/cm ²) |

Hydraulic cylinders : (backhoe)

| Cylinder | Numbers | Bore x Stroke (in mm) |
|----------|---------|-----------------------|
| Boom | 2 | 225 x 2200 |
| Arm | 1 | 250 x 2015 |
| Bucket | 1 | 225 x 1630 |

Hydraulic cylinders : (Loading shovel)

| Cylinder | Numbers | Bore x stroke (in mm) |
|-------------|---------|------------------------|
| Boom | 2 | 225 x 1805 |
| Arm | 2 | 180 x 1765 |
| Bucket | 2 | 200 x 1530 |
| Bottom dump | 2 | 140 x 435 |

STANDARD EQUIPMENT

2 x 24 V/7.5 kW starting motor, 24 V/75 A alternator, 2 x 12 V / 200 Ah batteries, Air cleaner, Dust indicator, Two modes selection with electronic load limiting control, Track roller guards, Wet disc parking brake, Vandalism Protection, Swing holding brake, Tool box, High mount steel cab with tinted glass window, Cabin fan, Reclining seat, Magazine box, Rubber mat, Rear view mirror, Wind shield wiper & washer, Portable fire extinguisher, Cabin lamp, warning cluster, Seat belt, Automatic centralised lubrication system, Falling object - protective structure (FOPS) with Front Wind shield guard, Automatic fire detection and suppression system.

INDICATORS / ALARMS

Radiator coolant level, Hydraulic oil level, Engine cooling water temperature, Hydraulic oil filter clogging.

GAUGES & METERS

Fuel level gauge, Engine oil pressure gauge, Engine cooling water temperature, Hydraulic oil level & temperature gauge, Service Meter

OPTIONAL ACCESSORIES

Low mount steel cab, Heater, Air conditioner, Track shoe - 810 mm and 1010 mm.





STEERING

Type : Steering / travel controls are actuated with either hand levers or foot pedals. Pushing both levers (or pedals) makes the machine to move forward. Pulling them back makes the machine to move backward. Steering one lever (or pedal) in neutral and the other in forward enables the machine to make a pivot turn. Pushing one forward while pulling the other backward makes the machine counter-rotate on the spot.



DRIVES

Type Fully hydrostatic drive system is with two speeds. Each track is driven by two hydraulic motors. Power is transmitted through spur gears and planetary reduction gears to the track.

Max. Drawbar pull : 608 kN (62,000 kgf)

Max. travel speed 0.94 m/sec (3.4 km/h)



BRAKES

Hydraulic lock type brakes. Each travel motor is equipped with an externally fitted brake of spring applied and hydraulically released wet disc type. When the travel/steering levers are positioned in neutral, the brake is automatically applied. When the brakes are applied, the hydrostatic braking softens shocks and also serves to regulate speeds when making descent. Wet, multiple disc type parking brakes which are hydraulically interconnected with travel/steering levers are also automatically actuated on the final-drive shaft.



SWING SYSTEM

Two fixed displacement piston motors power the closed loop swing system through two swing machineries with spur and planetary reduction gears. An externally fitted wet multiple disc type swing holding brake in the swing motor is automatically applied after 3.5-4.0 sec. when the control lever is positioned in neutral, with swing in Auto mode and always release in release mode and applied always when parking brake is in ON. Single-row shear type ball bearings with induction hardened internal gears are built-in in the swing circle.

Swing speed 4.5 r/min
Tail Swing radius 4870 mm



UNDER CARRIAGE

Job proven undercarriage with long track and wide track gauge. Centre frame is mounted on the track frames and secured with bolts. Sealed and lubricated rollers and idlers. Hydraulic track tension adjusters with cushion cylinders. Assembled track-type shoes with double grousers

Shoe width : 710 mm
Grouser height : 20 mm
No. of shoes (each side) : 51
No. of track rollers (each side) : 8
No. of carrier rollers (each side) : 3
Ground pressure (Backhoe) : 120.00 kPa (1.22 kg/cm²)
Ground pressure (Loading shovel) : 123.56 kPa (1.26 kg/cm²)



OPERATING MASS (approx.)

Loading Shovel :

Operating mass including 5100 mm boom, 3800 mm arm, 6.1 m³ standard bucket, operator, lubricant, coolant, full fuel tank and the standard accessories.....98,000 kg.

Backhoe :

Operating mass including 7900 mm boom, 3415 mm arm, 5.0 m³ standard heavy duty rock bucket, operator, lubricant, coolant, full fuel tank and the standard accessories.....95,000 kg.

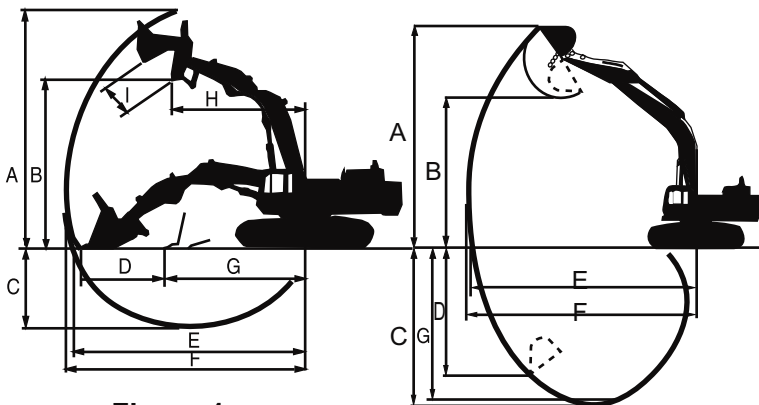


Figure 1

Figure 2

Material and specifications are subject to change without notice, Illustrations may include optional equipment & accessories



SERVICE REFILL CAPACITY

| | |
|-------------------------|----------|
| Fuel tank | : 1370 ℓ |
| Coolant | : 158 ℓ |
| Engine | : 51ℓ |
| Final Drive (each side) | : 55ℓ |
| Swing drive (each side) | : 13ℓ |
| Hydraulic Tank | : 650ℓ |
| Pump Drive (P.T.O.) | : 15ℓ |
| Total Hydraulic System | : 1200ℓ |



FILTER SYSTEMS

Engine : Two stage fuel filter with water separator.

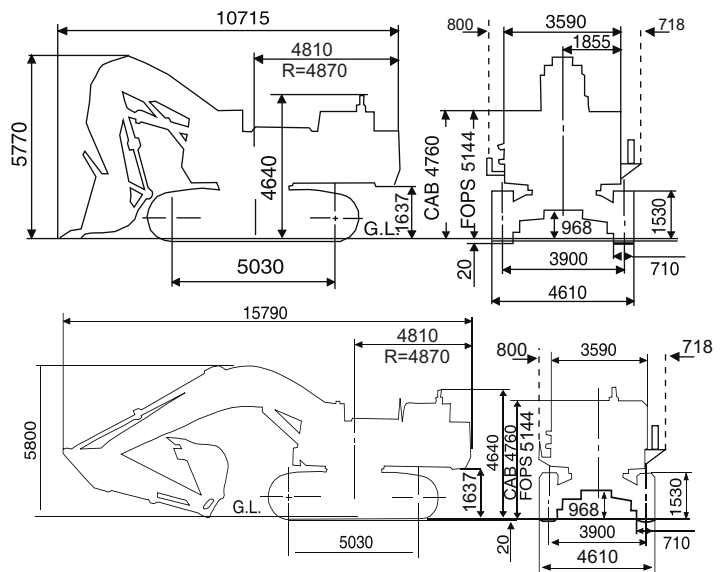
Air intake : Dry type, two stage air cleaner with dust evacuator.

Hydraulic : One suction filter, four pressure line filters, four main, return line filters and one for motor drain filter, one filter for pilot system, one for closed loop swing and one for PTO lubrication system.



WORKING RANGE

| EXCAVATOR | Shovel (Fig.1) | Backhoe (Fig.2) | | | |
|--|-------------------|-----------------|-----------|-------|-----------|
| Boom | 5.1 m | 7.9m Std. | 9.25m | | |
| Arm | 3.8m | 3.4m Std. | 3.4m Std. | 4.6m | 5.7m Long |
| Bucket | 6.1m ³ | | | | |
| A.Max. cutting / digging height (m) | 12.170 | 12.7 | 13.4 | 13.1 | 13.80 |
| B.Max. dumping height (m) | 8.780 | 8.4 | 9.1 | 9.0 | 9.5 |
| C.Max. digging depth (m) | 3.910 | 7.9 | 9.3 | 10.4 | 11.5 |
| D.Level crowding distance (m) / Max. vertical wall digging depth | 4.720 | | 6.2 | 7.4 | 9.2 |
| E.Max. digging reach at G.L. (m) | 10.950 | 13.5 | 15.0 | 15.9 | 17.00 |
| F. Max. digging reach (m) | 11.380 | 13.9 | 15.3 | 16.2 | 17.30 |
| G.Min. reach on ground / Max. digging depth of cut at 2.44 m level | 6.125 | 7.8 | 9.16 | 10.3 | 11.40 |
| H.Reach at max. dumping height | 6.350 | | | | |
| I. Max. bucket throat opening | 1.815 | | | | |
| Bucket digging force (kg) | 56,000 | 37,000 | 37,000 | 37000 | 30500 |
| Arm crowding force (kg) | 58,500 | 34,000 | 34,000 | 29000 | 24500 |



BUCKET RANGE

| EXCAVATOR | Loading Shovel | | | | Backhoe | | | | |
|--------------------------------|---|---------------------|------------------------------------|-------------------------------|---------|--------|--|---------------------------------|----------------|
| Bucket Capacity m ³ | 4.5 | 5.5 | 6.1 | 7.0 | 3.1 | 3.7 | 4.3 | 5.0 | 5.5 |
| Heaped (SAE/ISO) | 3.6 | 4.1 | 4.7 | 5.6 | 2.3 | 2.7 | 3.2 | 3.6 | 4.5 |
| Struck | | | | | | | | | |
| Bucket width (mm) | | | | | | | | | |
| Without side cutters | 2320 | 2410 | 2650 | 2650 | 1410 | 1700 | 1890 | 2085 | 2100 |
| With side cutters | | | | | 1580 | 1870 | 2060 | 2255 | 2270 |
| Bucket mass (with teeth in kg) | | | | | | | | | |
| Without side cutters | 6450 | 8250 | 8350 | 8650 | 3100 | 3600 | 3800 | 3911 | 4350 |
| With Side cutters | | | | | 3300 | 3800 | 4000 | 4111 | 4550 |
| No. of bucket teeth | 6 | 6 | 6 | 6 | 4 | 4 | 5 | 5 | 5 |
| Bucket type & uses | Bottom dump Material with density around 2.5t/m ³ | Bottom dump Rock | Bottom dump Standard Heavy duty | Bottom dump Light material | Narrow | Narrow | Material with density around 2.1t/m ³ | Standard Heavy duty Rock bucket | 5 wide coal |

बी ई एम एल लिमिटेड

BEML LIMITED

Schedule 'A' Company under Ministry of Defence, Govt. of India

**Business
Network**

Corporate Office

BEML Soudha, 23/1, 4th Main,
S.R. Nagar, Bangalore-560 027

T + 91 80 22963240, 22963250

F + 91 80 22963278/516/280/164

E-mail: office.cpd@beml.co.in
corpcomm@beml.co.in

International Business Division

Flat No. E,F,G, H, 'Vandana' 11th Floor,
11, Tolstoy Marg, Connaught Place
New Delhi – 110 001

T + 91 11 23316500
F + 91 11 23325085

E-mail: mx@beml.co.in

Marketing Division

5th Floor, Unity Building,
J.C. Road, Bangalore-560 002

T + 91 80 22963501/02/07/510/540

F + 91 80 22963541

E-mail: m@beml.co.in
mmd@beml.co.in

REGIONAL OFFICES

| | |
|--|--|
| Bangalore 3rd Floor, Unity Building, J C Road Bangalore 560002 Karnataka | T +91 80 2296 3524 T + 91 97413 51588 E-mail: mg@beml.co.in |
| Bilaspur 1-A, Industrial Area, Sector-C, Sirgitti, Bilaspur - 495 223. Chhattisgarh | T + 91-7752-252745, 252598 F + 91-7752 252065 E-mail: mv@beml.co.in |
| Neyveli F-4, Dr. Rajendraprasad Road, Block-27, Neyveli, - 607 803 Tamil Nadu | T/F + 91 4142 268517 T +91 4142 265517 / 229392 E-mail: ma@beml.co.in |
| Dhanbad Mouza - Kangalo, Amaghata, Govindpur, KG Ashram Post, Dhanbad Jharkhand – 828 109 | T + 91 94711 92023 E-mail: mf@beml.co.in |
| Hyderabad 3-6-114, Street No.18, Himayat Nagar, Hyderabad - 500 029 Telangana | T + 91 40 2322 7032 / 94907 93117 F + 91 40 23221794 E-mail: rm.hyderabad@beml.co.in |
| Kolkata 35/1A, Taratala Road, Kolkata - 700 088, West Bengal | T + 91 33 2401 5286 / 87 / 98 / 99 F + 91 33 2401 5288 E-mail: rm.kolkata@beml.co.in |
| Mumbai 32A, Bazar Road, Near Jain Mandir, Bandra (West), Mumbai, Maharashtra - 400 050 | T + 91 22 26431875 / 26435875 F + 91 22 26423928 E-mail: rm.mumbai@beml.co.in |
| Nagpur No 33, Cement Road, Shivaji Nagar, Nagpur - 440 010, Maharashtra. | T + 91 0712 2248435 / 2248343 F + 91 0712 2249997 E-mail: mn@beml.co.in |
| New Delhi Flat E, F, G, H, 'Vandana', 11th Floor, 11, Tolstoy Marg, Connaught Place, New Delhi - 110 001 | T + 91 11-23443511 / 2331 6500 F + 91 11 2332 5085 E-mail: ml@beml.co.in |
| Ranchi 206/D-1, Bhagirathi, (Behind NCC Campus) Rameshwaram Colony, Bariatu Road, Ranchi, Jharkhand - 834009 | T + 91 651 2540710 / 94311 08531 E-mail: mr@beml.co.in |
| Sambalpur BEML Complex, NH-6, Panchagachhia, Baraipalli Post, Sambalpur 768 006 Odisha. | T + 91 663 2521604 / 2521389 E-mail: mb@beml.co.in |
| Singrauli PB No. 5, Jhingurdha Colliery, Singrauli - 486 889 Madhya Pradesh. | T + 91 7805 272668 / 272318 F + 91 7805 272282 E-mail: rm.singrauli@beml.co.in |

ACTIVITY CENTERS

| | |
|---|---|
| Bhopal Ground Floor, Hall No.1, Chittod Complex, Zone-1, Maharanapratap Nagar (MP Nagar), Bhopal - 462 011 | T + 91 755 2550711 / 8989459753 |
| Panjim BEML Limited, 5/4, Victor Building, Fontanhas, Mala, Panjim - 403 001, Goa | T +91 832 2225135 / 77986 87178 |
| Itanagar C/o Toborn Riba, H-Sector, Papum Itanagar – 791113, Arunachal Pradesh | T + 91 94029 34205 / 88372 15852 |
| Kochi No. 39/2122, Chittoor Road, Emakulam South, Kochi - 682016 | T + 91 484 2375138 E-mail: rm.kochi@beml.co.in |
| Maihar Maihar, Madhya Pradesh | Mob: +91 79875 53768 |
| Silapathar: Surya Vatika, Amritpur, Silapathar, Assam – 787 059 | T: 95311 29059 |

DISTRICT OFFICES

| | |
|---|---|
| Ahmedabad 99/100, BEML HOUSE, 2nd Street, Azad Society, Ambawadi, Ahmedabad - 380 015, Gujarat | T + 91 79 26445523 / 94264 13620 F + 91 79 26423950 E-mail: rm.ahmedabad@beml.co.in |
| Asansol 3, Burnpur Road, Asansol - 713 304 West Bengal | T + 91 341 2252480 F + 91 341 2250601 E-mail: mca@beml.co.in |
| Bacheli Behind Central Stores of NMDC Ltd., Depot 5, Bacheli - 494 553. Chhattisgarh | T/F + 91 7857 230005 E-mail: rm.bacheli@beml.co.in |
| Bhilai Room no 22/C, BSP Expansion Building, Near Ispat Bhaven, Bhilai 490 001, Chhattisgarh | T + 91 788 2223880 F + 91 788 2221652 E-mail: mnb@beml.co.in |
| Bhubaneswar 252/A, Lewis Road Bhubaneswar - 751 014 Odisha | T + 91 674 22434427 / 99373 83950 E-mail: mbb@beml.co.in |
| Chandrapur Mamidwar, Tiles Factory Compound Ghugus Road, Padoli Chandrapur - 442 406 Maharashtra | T + 91 7172 287230 F + 91 7172 287560 E-mail: mnc@beml.co.in |
| Chennai Flat No. 10, Supriya Estates, No.3, Sterling Road, Nungambakkam, Chennai - 600 034, Tamil Nadu, | T + 91 44 28220844 F + 91 44 28257319 E-mail: rm.chennai@beml.co.in |
| Guwahati No.11, Ward 43, Hengrabari Road, Ganesh Puri, Dispur, Guwahati - 781 006 Assam | T + 91 361 2232966 F + 91 361 2232967 E-mail: rm.guwahati@beml.co.in |
| Hospet No.1431, Manjunatha Complex, Bhagat Singh Nagar, Opp. KSSIDC Indl. Estate, Dam Road, Hospet - 583 203, Karnataka | T/F + 91 8394 230172 E-mail: rm.hospet@beml.co.in |
| Jammu 62C, Block D/C, Gandhi Nagar, Jammu tawi - 180 004 Jammu and Kashmir | T + 91 191 2459 437 F + 91 191 2430 447 E-mail: mlj@beml.co.in |
| Kothagudem Old Project Planning Department, Near SCCL Corporate Office, Kothagudem - 507 101, Telangana | T + 91 8744 245572 F + 91 8744 245530 E-mail: rm.kothagudem@beml.co.in |
| LEH 174-B, (Near Royal Enfield Showroom), Housing Colony, Leh, Ladakh -194 101 | T + 91 1982 258828 / 94198 71008 E-mail: mll@beml.co.in |
| Ramagundam Near SCCL TTC, Jawahar Nagar, Behind CJSF Camp, Godavari khani - 505 209. Peddapalli Dist., Telangana | T + 91 8728 248299 / 94408 58441 E-mail: mhr@beml.co.in |
| Udaipur 20-B, Uchhab Bhawan, Bedla Road, Fatehpura, Udaipur - 313 001 Rajasthan | T + 91 294 2452054 E-mail: mwu@beml.co.in |
| Visakhapatnam No. 8-45-11, 4th Lane, Vidyanaagar Chinna Waltair Colony Visakhapatnam - 530 003, Andhra Pradesh | T/F +91 891 2754608 / 83320 54590 E-mail: rm.vizag@beml.co.in |

www.bemlindia.in

Represented by:

बी ई एम एल लिमिटेड

BEML LIMITED

Schedule 'A' Company under Ministry of Defence, Govt. of India

Hydraulic Excavators

BE75

BE220G

BE300LC

BE700

BE1000-1

BE1000E-1

BE1800D

BE1800E