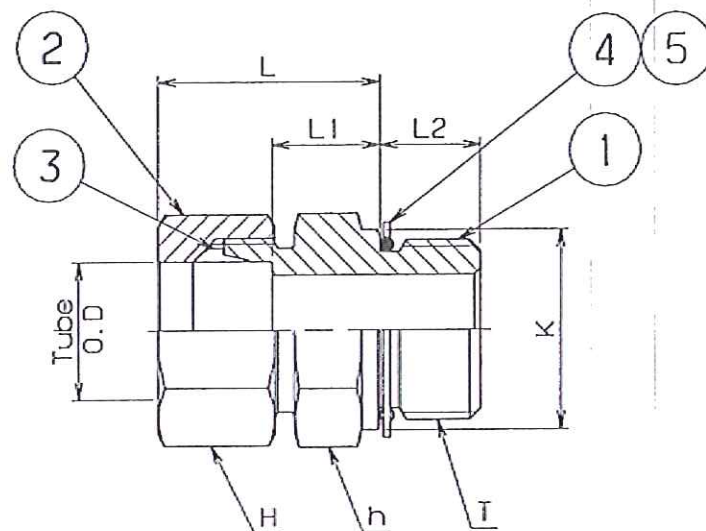


| GRADE No.         | N1    | N2   | N3  | N4  | N5  | N6  | N7  | N8  | N9  | N10  | N11 | N12 |
|-------------------|-------|------|-----|-----|-----|-----|-----|-----|-----|------|-----|-----|
| VALUE             | 0.025 | 0.05 | 0.1 | 0.2 | 0.4 | 0.8 | 1.5 | 3.2 | 6.3 | 12.5 | 25  | 50  |
| SYMBOL            |       |      |     |     |     |     |     |     |     |      |     |     |
| SURFACE ROUGHNESS |       |      |     |     |     |     |     |     |     |      |     |     |



#### NOTE

THE STRENGTH AND NO AIR LEAKAGE SHALL BE GUARANTEED UNDER THE CONDITION OF NO. 1 AND 2.

1. TEMPERATURE RANGE : -40 - +80°C

2. OPERATING PRESSURE : MAX. 80 BAR

3. END FITTING SHALL BE OF FLARELESS DOUBLE COMPRESSION TYPE & CONFIRM TO SPECIFICATION: DIN2353 (ISO8434-1)

— SHALL BE APPLIED FOR DIMENSIONS NOT SPECIFIED AT DRAWING

| MACHINING DEVIATIONS FOR LINEAR DIMENSIONS   | RANGE | 0 - 6 | 6 - 30 | 30 - 120 | 120 - 315 | 315-1000 | 1000-2000 | 2000-4000 | ABOVE 4000 |
|--|-------|-------|--------|----------|-----------|----------|-----------|-----------|------------|
| TOLERANCE  |       | ±0.1  | ±0.2   | ±0.3     | ±0.5      | ±0.8     | ±1.2      | ±2        | ±3         |
| FOR DIMENSIONAL TOLERANCES OF SHEET METAL PARTS AND WELDED STRUCTURES, REFER STD. RD-227 |       |       |        |          |           |          |           |           |            |
| UNSPECIFIED TOLERANCE FOR LINEAR AND ANGULAR DIMENSIONS REF. IS 2102 (PT-1) (MEDIUM)     |       |       |        |          |           |          |           |           |            |
| VALUES OF SURFACE TEXTURE SHALL BE AS PER COMPANY STD DS. 1012.C.                        |       |       |        |          |           |          |           |           |            |
| QUALITY OF WELD JOINTS REF, RD-230 MEDIUM  |       |       |        |          |           |          |           |           |            |
| PROTO / PILOT / PRODUCTION   |       |       |        |          |           |          |           |           |            |

| PART NO.  | TUBE O.D (mm) | T G (PF) | WIDTH ACROSS FLAT |    | K  | L  | L1 | L2 |
|-----------|---------------|----------|-------------------|----|----|----|----|----|
|           |               |          | H                 | h  |    |    |    |    |
| 909-60252 | 10            | 1/4"     | 19                | 19 | 18 | 26 | 11 | 12 |

**UNCONTROLLED COPY**

| SL No.   | QTY                             | DRG. / STOCK No. | DESCRIPTION   | SIZE                | COMPANY STD/IS STD | Wt.Kg. |
|--|---------------------------------|------------------|---|---------------------|--------------------|--------|
| 5  | 1                               |                  | RETAINING RING  |                     | SUS316             |        |
| 4  | 1                               |                  | O-RING  |                     | NBR                |        |
| 3  | 1                               | 909-60709        | SLEEVE  |                     | SUS316             |        |
| 2  | 1                               |                  | NUT   |                     | SUS316             |        |
| 1  | 1                               |                  | BODY  |                     | SUS316             |        |
| DETAIL PARTS   |                                 |                  |   |                     |                    |        |
| PRODUCT DMRC 8 CAR                                     |                                 |                  |   |                     |                    |        |
| SURFACE TREATMENT                                      |                                 |                  |   |                     |                    |        |
| APPROVED <i>[Signature]</i>                            |                                 |                  |   |                     |                    |        |
| CHECKED <i>[Signature]</i>                             |                                 |                  |   |                     |                    |        |
| DRAWN <i>[Signature]</i>                               |                                 |                  |   |                     |                    |        |
| 1  | ECN No.90900488<br>NOTE 3 ADDED | 07.08.2015       | SK <i>[Signature]</i><br>SM <i>[Signature]</i><br>MS <i>[Signature]</i> | REF DRG EE01652-400 |                    |        |
| ALT  | CHANGES / ECN No.               | DATE             | BY  | CD                  | APP                | QTY    |
| TITLE MALE CONNECTOR(BSP Parallel) WITH RETAINING RING |                                 |                  |   |                     |                    |        |
| SCALE NTS  |                                 |                  |   |                     |                    |        |
| SHEET 1 of 1   |                                 |                  |   |                     |                    |        |
| DRG No. 909-60252                                      |                                 |                  |   |                     |                    |        |
| ALT 1  |                                 |                  |   |                     |                    |        |

**BEML LIMITED**  
R&D, BANGALORE COMPLEX  
BANGALORE 560 075