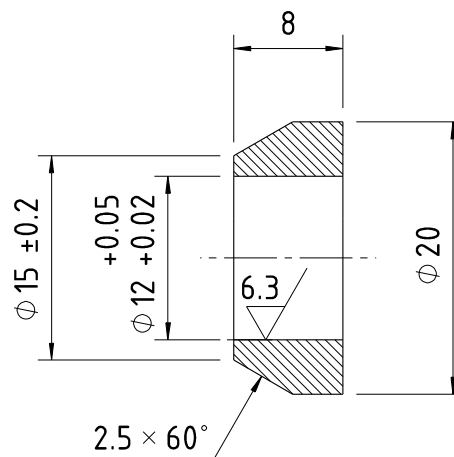
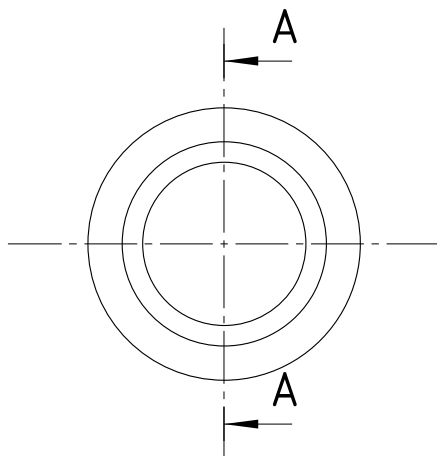


**COPY RIGHT & CONFIDENTIAL**

MACHINING DEVIATIONS FOR LINEAR DIMENSIONS	RANGE	0 – 6	6 – 30	30 – 120	120 – 315	315–1000	1000–2000	2000–4000	ABOVE 4000	RA
	TOLERANCE	±0.1	±0.2	±0.3	±0.5	±0.8	±1.2	±2	±3	~
FOR DIMENSIONAL TOLERANCES OF SHEET METAL PARTS AND WELDED STRUCTURES, REFER STD. RD-227										
UNSPECIFIED TOLERANCE FOR LINEAR AND ANGULAR DIMENSIONS REF. IS 2102 (PT-1) (MEDIUM)							QUALITY OF WELD JOINTS REF, RD 230 MEDIUM			
VALUES OF SURFACE TEXTURE SHALL BE AS PER COMPANY STD DS. 1012.C.							STATUS:	PROTO		
WELDING SHALL BE CARRIED OUT AS PER IS: 9595-96										



## SECTION A-A

**UNCONTROLLED COPY**

NOTE:

1. REMOVE SHARP EDGES AND BURRS.
2. TO BE PLATED WITH ZINC.

[illegible]