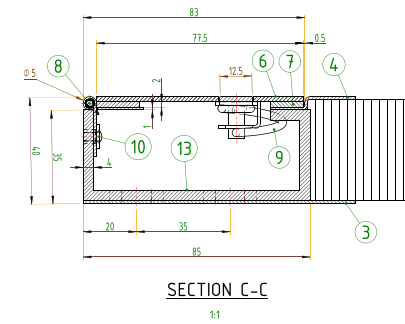
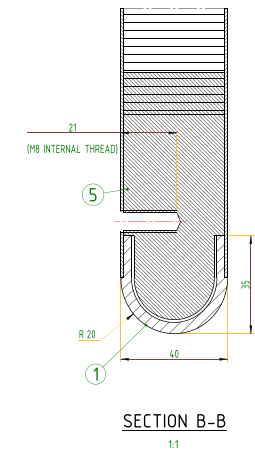
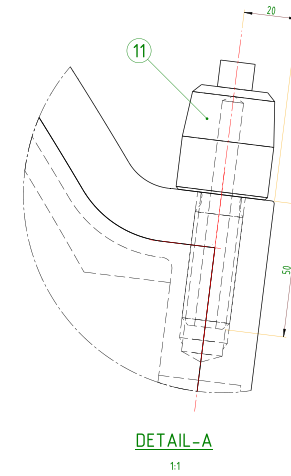
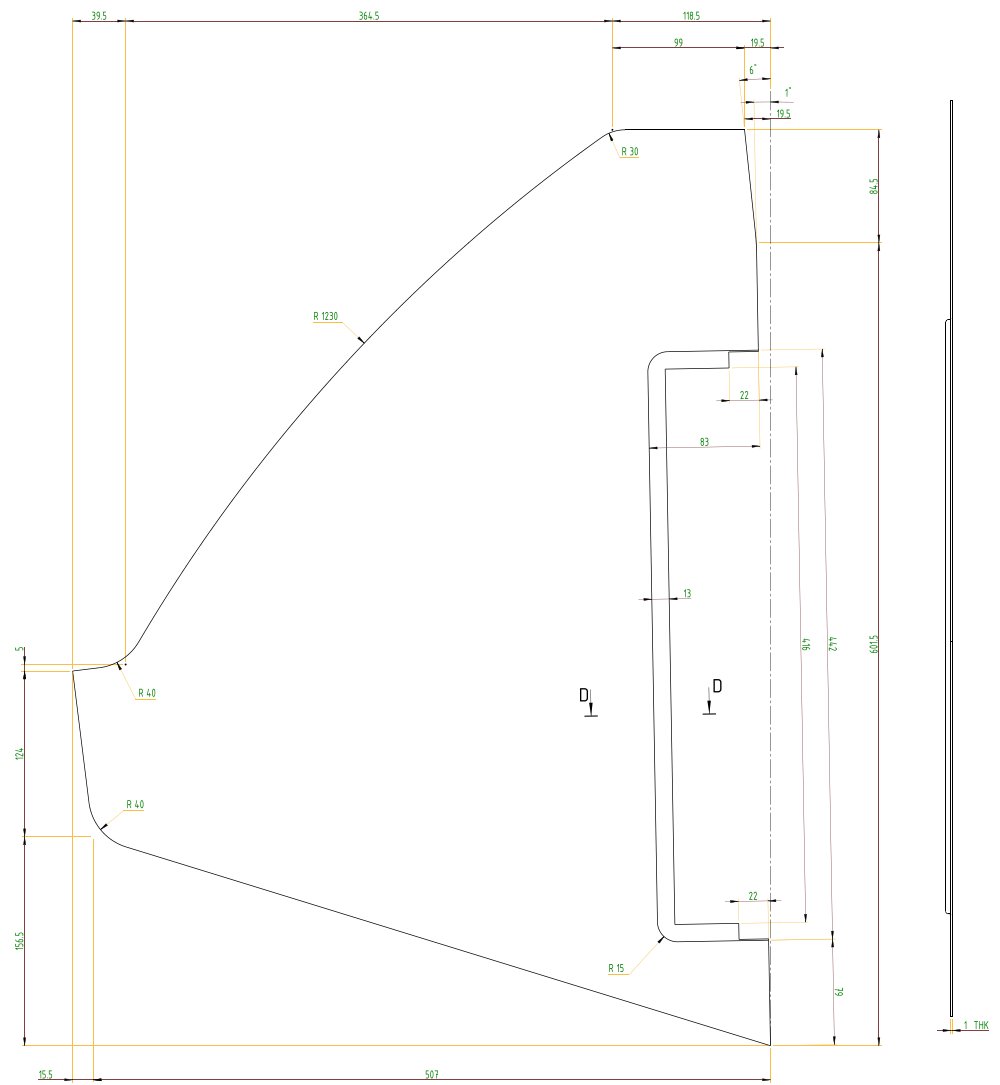


SL. NO.	QTY	PART / STOCK No.		DESCRIPTION		SIZE	COMPANY STD./IS		WT. (Kg)
						MATERIAL			
△	△				PRODUCT	MUMBAI METRO CARS L2 & L7			
					REF. DRG.				
					MATERIAL				
					REAT				
					SURFACE				
					TREAT				
					TITLE				
						APPRO.	<i>[Signature]</i>	15/01/2020	
						REV'D	<i>[Signature]</i>	15/01/2020	
						ENGR.	<i>[Signature]</i>	15/01/2020	
						DRAWN	<i>[Signature]</i>	15/01/2020	
					PANEL, BULKHEAD	SCALE	1:2		SHEET 1 of 5
ALT. NO.		ECN NO./CHANGES		DATE	BY	Dwg No.			ALT
						BEML LIMITED <small>Bombay Engineering & Machine Limited</small>			WT.
						525-29031			△



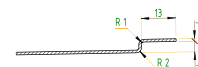
UNCONTROLLED

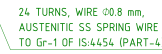
SL. NO.		QTY	PART / STOCK No.	DESCRIPTION		SIZE	COMPANY STD./S		WT. (kg)
				PRODUCT		MATERIAL			
					MUMBAI METRO CARS L2 & L7				
					REF. DRG				
					MATERIAL				
					HEAT		APPS		10/01/2020
					TREAT		SEVD		11/01/2020
					DISCARD		CHMD		10/01/2020
					TREAT		SEVAN		10/01/2020
					WELD		SCALE		
PANEL, BULKHEAD						SHEET		W1	
BEML LIMITED <small>BEHAL LIMITED</small>						1 of 5		2 of 5	
						ALT		-	
ALT. NO.	ECN NO/CHANGES			DATE	BY	925-29031		ALT	
				APPROV	A1				



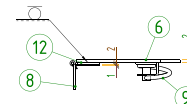
SECTION D-D

UNCONTROLLED

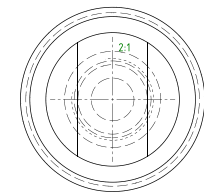


[illegible]

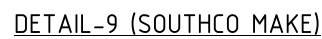
1:1

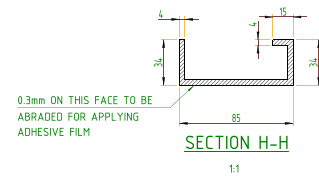


UNCONTROLLED

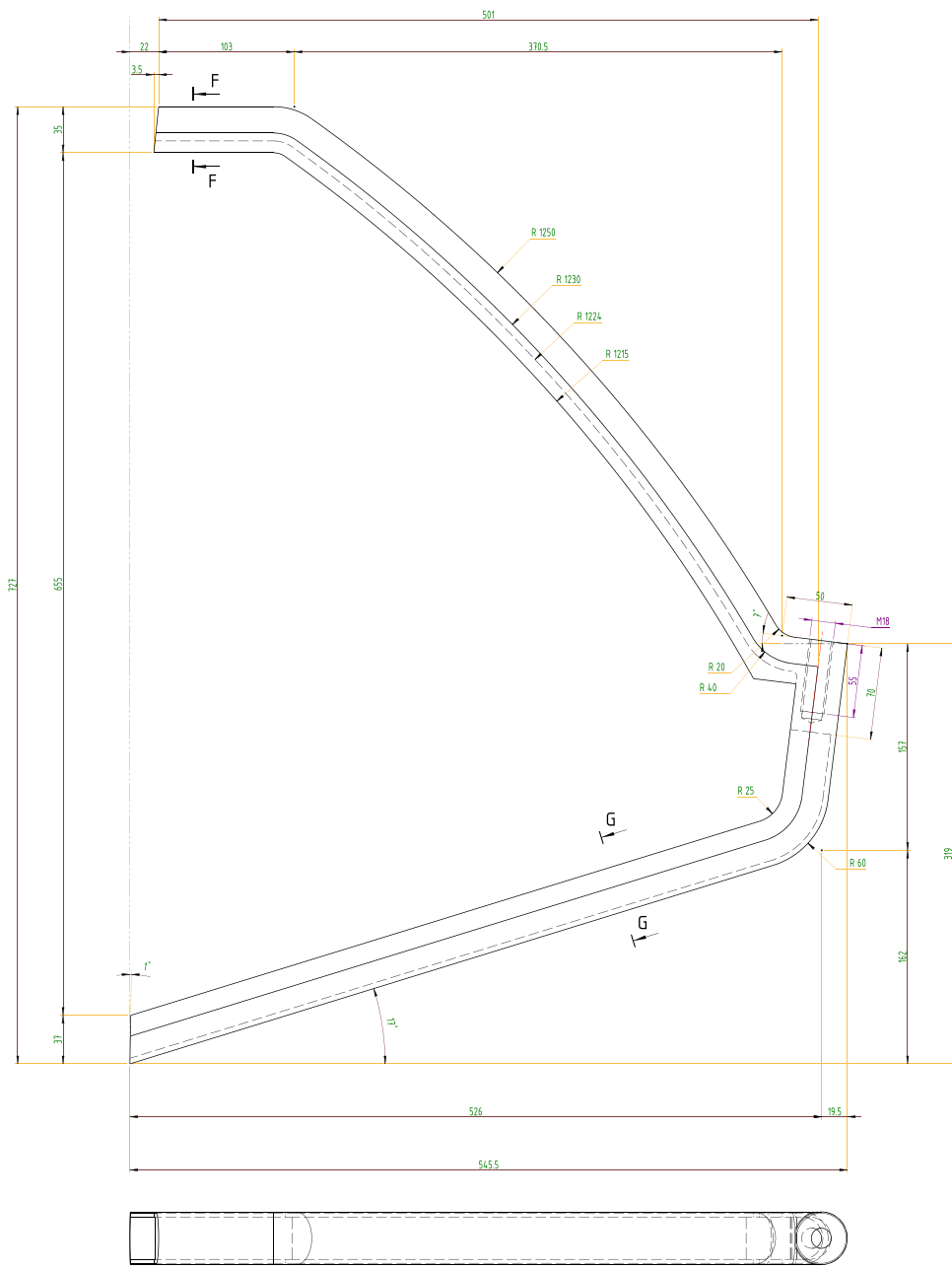
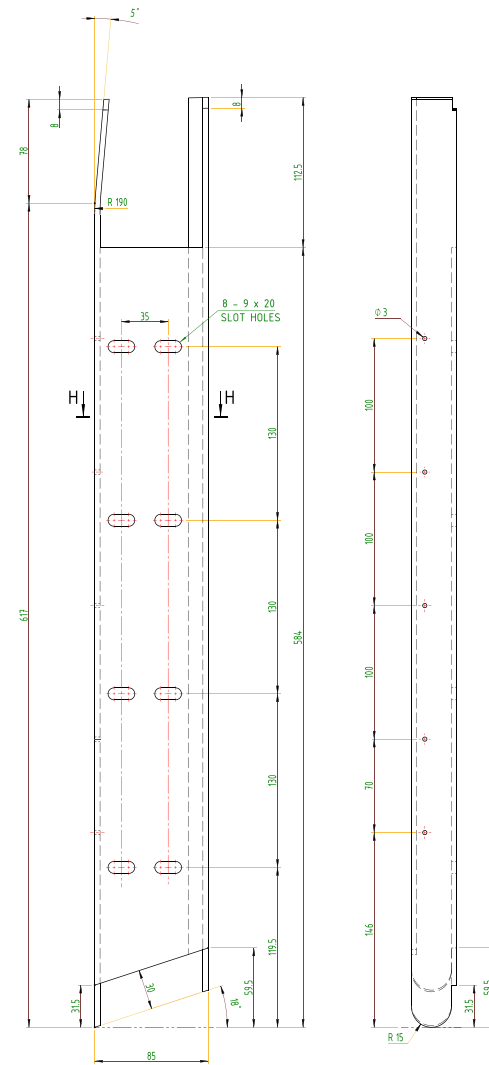


DETAIL-11



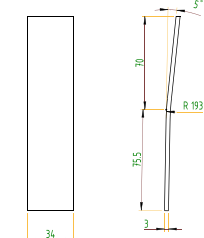
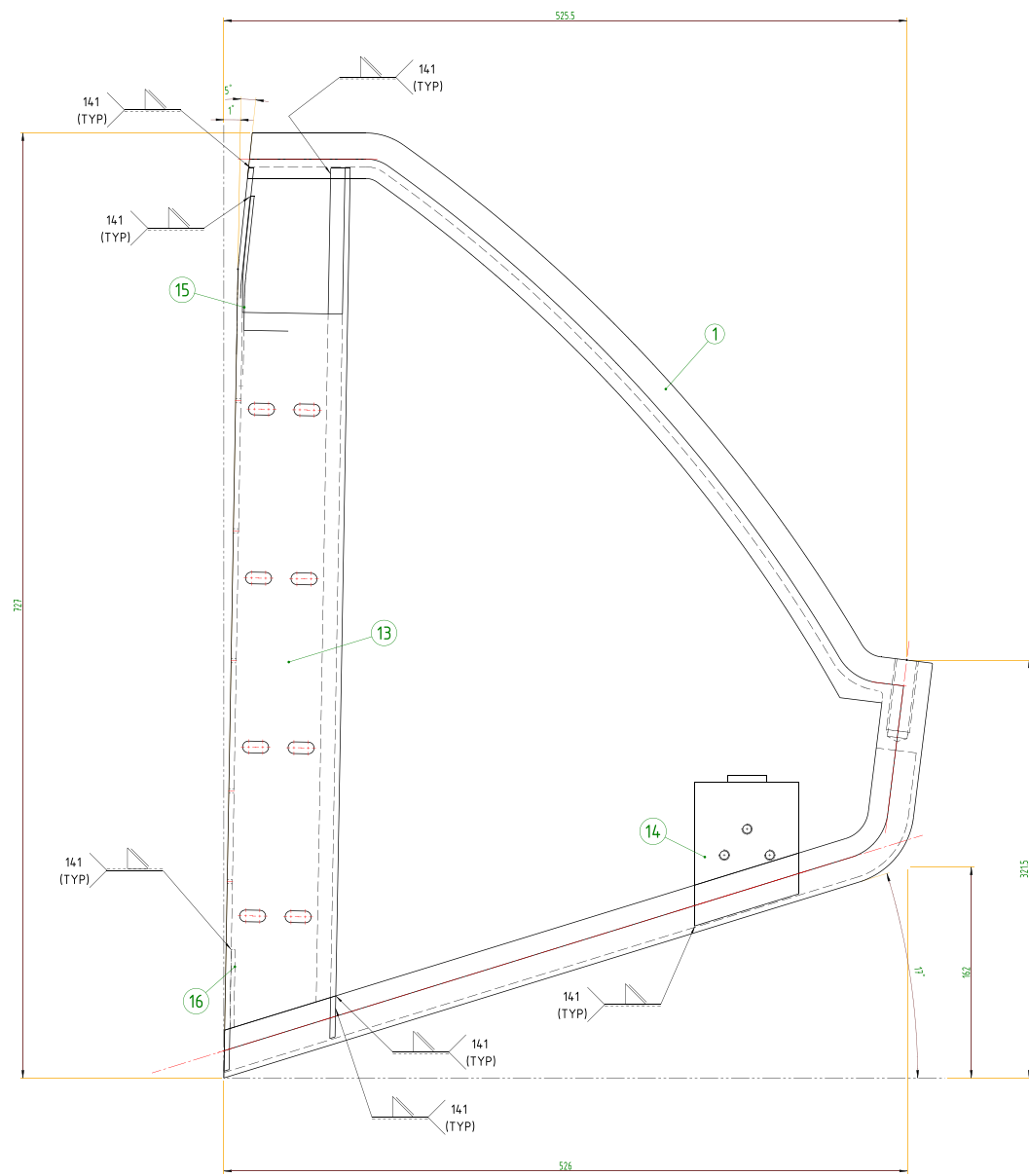
[illegible]

UNCONTROLLED

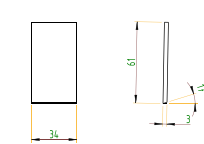


Top view

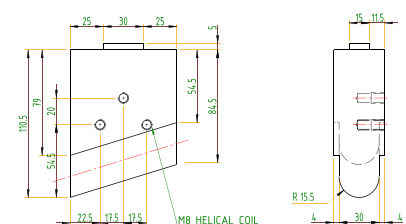
DETAIL-1



DETAIL-15



DETAIL-16



DETAIL-14

UNCONTROLLED

- NOTE:
1. ALL DIMENSIONS ARE IN mm.
 2. THE BULKHEAD PANEL SHALL CONFIRM TO PTS DOC. No. GR/TD/4919
 3. THE BULK HEAD PANEL SHALL BE PAINTED ACCORDING TO PAINTING SPECIFICATION DOC. No. GR/TD/4390.
 4. PIN POLE SURFACE SHALL BE PLATED WITH ZINC COATING TO SERVICE GRADE 2 AND WITH CLEAR CHROMATE PASSIVATION AS PER IS-1573.

3		2						1			
MACHINING DEVIATIONS FOR LINEAR DIMENSIONS		RANGE	0 - 6	6 - 30	30 - 120	120 - 375	375-1000	1000-2000	2000-4000	4000-ABOVE	RA
TOLERANCE		+0.1	+0.2	+0.3	+0.5	+0.8	+1.2	+2	+3	+4	~
FOR DIMENSIONAL TOLERANCES OF SHEET METAL PARTS AND WELDED STRUCTURES, REFER IS 90-207											
UNSPECIFIED TOLERANCE FOR LINEAR AND ANGULAR DIMENSIONS, REFER IS 2702 (PT-0) INDICATED											
QUALITY OF WELD JOINTS, REFER IS 2700 INDICATED											
VALUES OF SURFACE TEXTURE SHALL BE AS PER COMPANY STD DS 3012.											
WELDING SHALL BE CARRIED OUT AS PER IS 7596-76.											
STATUS:										PROTO/PRODUCTION	

17	AR	-	ADHESIVE	3THK	EPOXY
16	1	-	PLATE	3THK	A1050P-H14
15	1	-	PLATE	3THK	A1050P-H14
14	1	-	BLOCK, COIL		ALUMINIUM CASTING-LM 25
13	1	-	FRAME SUPPORT-OPP. DRAWN		A 6063-T5
12	1	-	SPACER	441x17.5x2THK	SUS304
11	1	-	PIN HOLE		IS:2062, E250
10	5	-	RIVET, BLIND CSK	Ø3.2x8	A1070BR
9	2	-	SPRING LATCH, HEX SOCKET HD		SOUTHCO, SUS304
8	1	-	HINGE		SUS304-BUFF FINISH
7	2	-	PACKING	442X12.5X2THK	SILICONE SPONGE WITH SELF ADHESIVE, COLOUR-WHITE, EN 45545 (HL3)
6	1	-	COVER	2THK	SUS 304/AISI 304
5	3	-	HELICAL COIL	M8	SUS 304/AISI 304
4	1	-	PANEL - OPP. DRAWN	1THK	A1050-H14
3	1	-	PANEL	1THK	A1050-H14
2	1	-	HONEY COMB		A3003 H18 / A3104 H18
1	1	-	FRAME -OPP. DRAWN		ALUMINIUM CASTING-LM 25

525-29031-301			PANEL, BULKHEAD - OPP. DRAWN		
17	AR	-	ADHESIVE		EPOXY
16	1	-	PLATE	3THK	A1050P-H14
15	1	-	PLATE	3THK	A1050P-H14
14	1	-	BLOCK, COIL		ALUMINIUM CASTING-LM 25
13	1	-	FRAME SUPPORT-AS DRAWN		A 6063-T5
12	1	-	SPACER	441x17.5x2t	SUS304 / AISI 304
11	1	-	PIN POLE		IS.2062, E250
10	5	-	RIVET, BLIND CSK	Ø3.2x8	A 1070BR
9	2	-	SPRING LATCH, HEX SOCKET HD		SOUTHCO, SUS304
8	1	-	HINGE		SUS 304/AISI 304, BUFF FINISH
7	2	-	PACKING	442x12.5x2THK	SILICONE SPONGE WITH SELF ADHESIVE, COLOUR-WHITE, EN 45545 (HL3)
6	1	-	COVER	2THK	SUS 304/AISI 304
5	3	-	HELICAL COIL	M8	SUS 304/AISI 304
4	1	-	PANEL (AS DRAWN)	1THK	A1050-H14
3	1	-	PANEL	1THK	A1050-H14
2	1	-	HONEY COMB		A3003 H18 / A3104 H18
1	1	-	FRAME (AS DRAWN)		ALUMINIUM CASTING-LM 25

525-29031-300			PANEL, BULKHEAD - AS DRAWN			
SL.No.	QTY	PART / STOCK No.	DESCRIPTION	SIZE	COMPANY STD./S	WT. (kg)
			MATERIAL			
			PRODUCT	MUMBAI METRO CARS L2 & L7		
			REF. DRG.			
			MATERIAL			
			HEAT TREAT			
			SURFACE FINISH			
			TITLE			
			PANEL, BULKHEAD	APPRO.		15/01/2020
				REVISED		15/01/2020
				CHECKED		15/01/2020
				DRAWN		15/01/2020
				SCALE		15/01/2020
				1:2	SHEET 5 OF 5	WT.
						ALT.
ALT.No.	ENK NO./CHANGES	DATE	DATE	525-29031		
3			2	1		
				A1		