

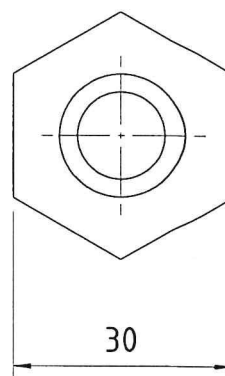
Technical drawing of a mechanical part, showing a side view and a top view.

Side View Dimensions:

- Overall length: 60 ± 0.5
- Distance from left end to first step: 32
- Surface texture symbol: 6.3
- Radius of first fillet: R 5
- Radius of second fillet: R 1.5
- Thread specification: M20
- Distance from thread start to end of part: 15
- Distance from first step to second step: 13
- Distance from second step to end of part: 3
- Left end chamfer: C0.5
- Left end diameter: $\Phi 14$
- Left end tolerance: -0.2 (top) and -0.1 (bottom)
- Right end chamfer: C-2.5

Top View Dimensions:

- Hexagonal base width: 30



NOTES:-

1. PART SHALL BE ZINC PLATED AS PER SERVICE GRADE No.2 OF IS:1573-86 & CHROMATE PASSIVATED TO COLOUR IRIDESCENT YELLOW.
2. REMOVE ALL SHARP EDGES & BURRS.
3. SCREW MACHINING SHOULD BE DONE ACCORDING TO ISO 261 NORMAL GRADE OR ABOVE.

A4