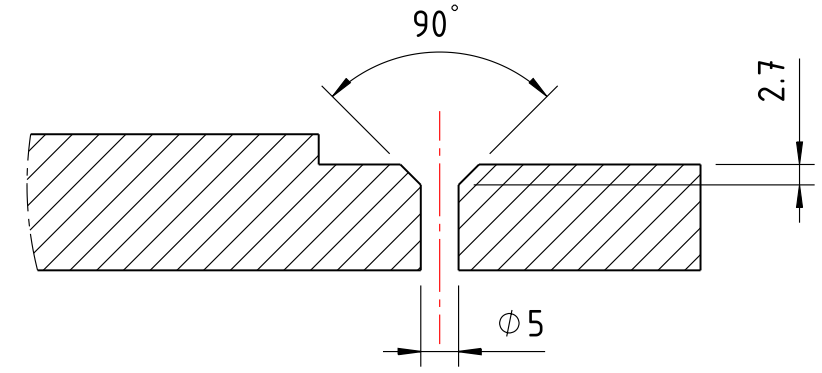
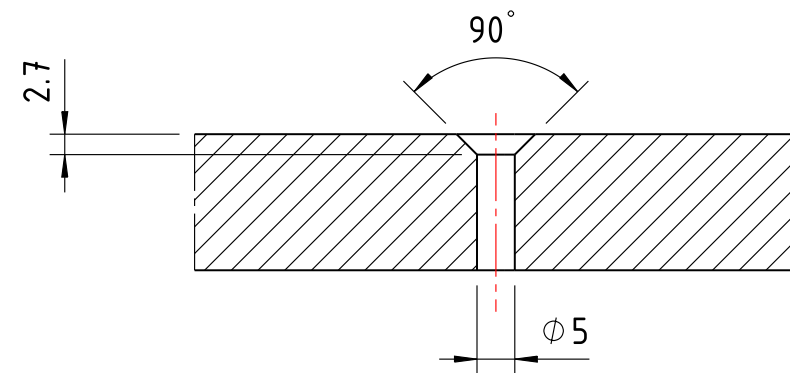
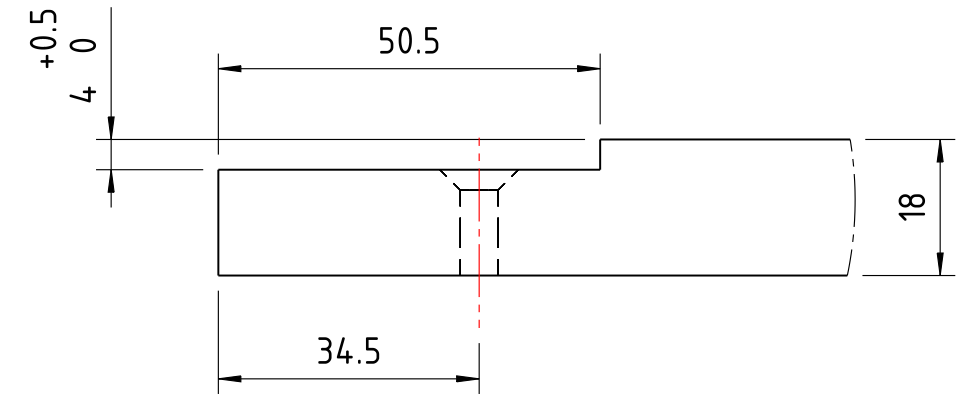
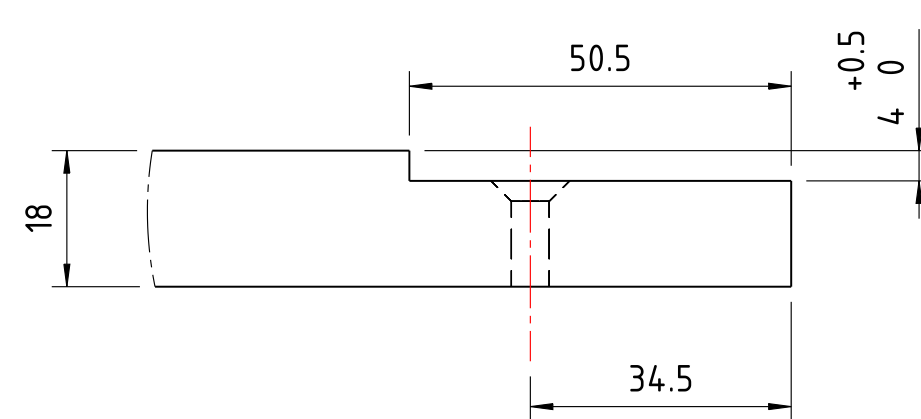
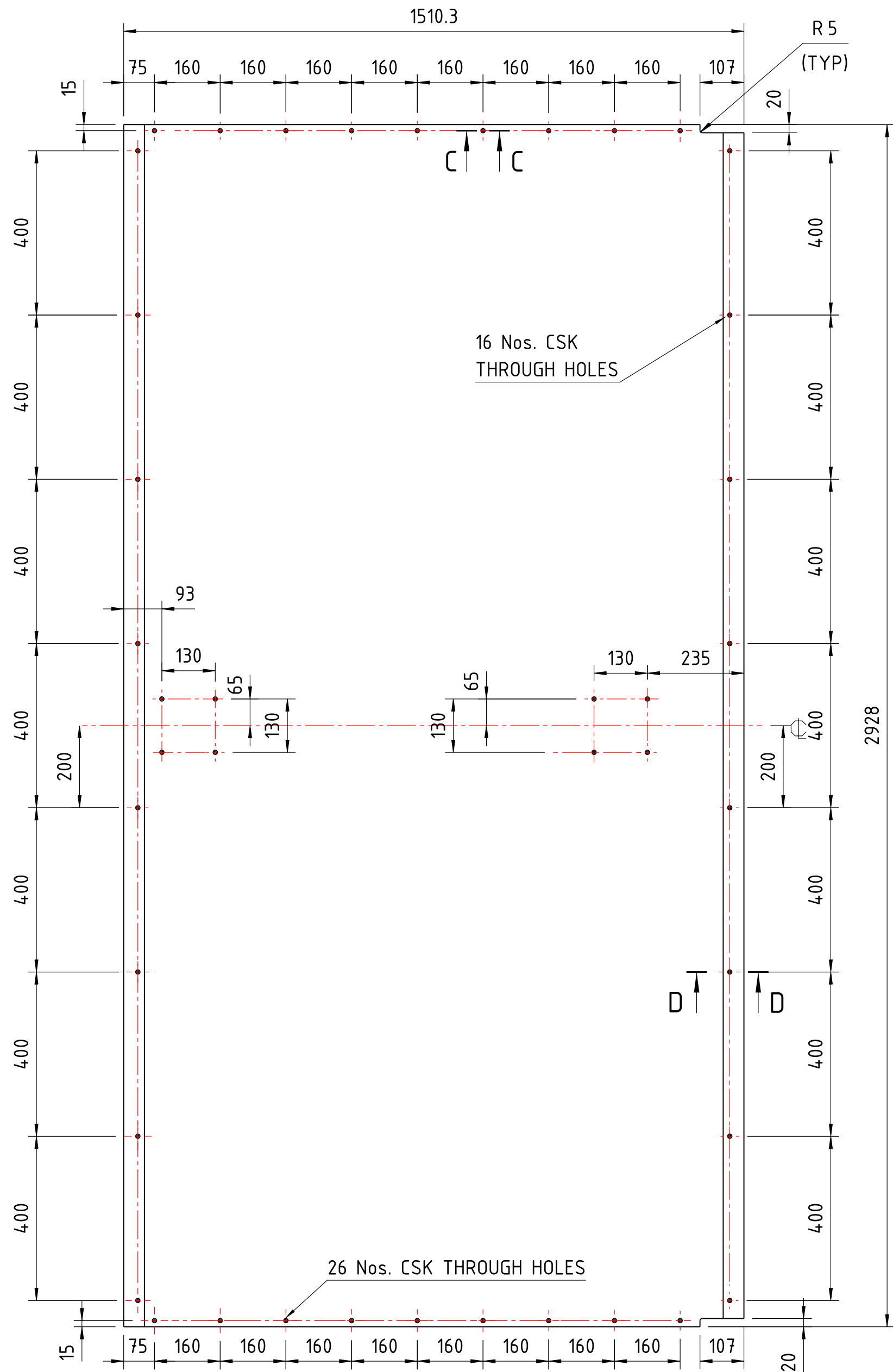


MACHINING DEVIATIONS FOR LINEAR DIMENSIONS	RANGE	0 - 6	6 - 30	30 - 120	120 - 315	315-1000	1000-2000	2000-4000	ABOVE 4000	RA
	TOLERANCE	±0.1	±0.2	±0.3	±0.5	±0.8	±1.2	±2	±3	~
FOR DIMENSIONAL TOLERANCES OF SHEET METAL PARTS AND WELDED STRUCTURES, REFER STD. RD-227										
UNSPECIFIED TOLERANCE FOR LINEAR AND ANGULAR DIMENSIONS REF. IS 2102 (PT-1) (MEDIUM)							QUALITY OF WELD JOINTS REF. RD 230 MEDIUM			
VALUES OF SURFACE TEXTURE SHALL BE AS PER COMPANY STD DS. 1012.C.							STATUS:	PROTO/PRODUCTION		
WELDING SHALL BE CARRIED OUT AS PER IS: 9595-96										



NOTE

[illegible]