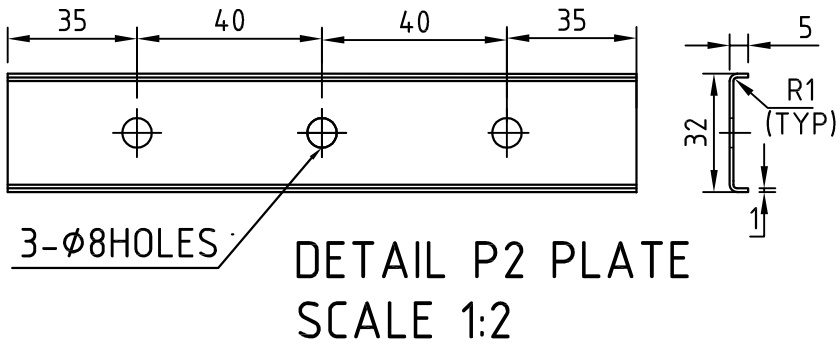
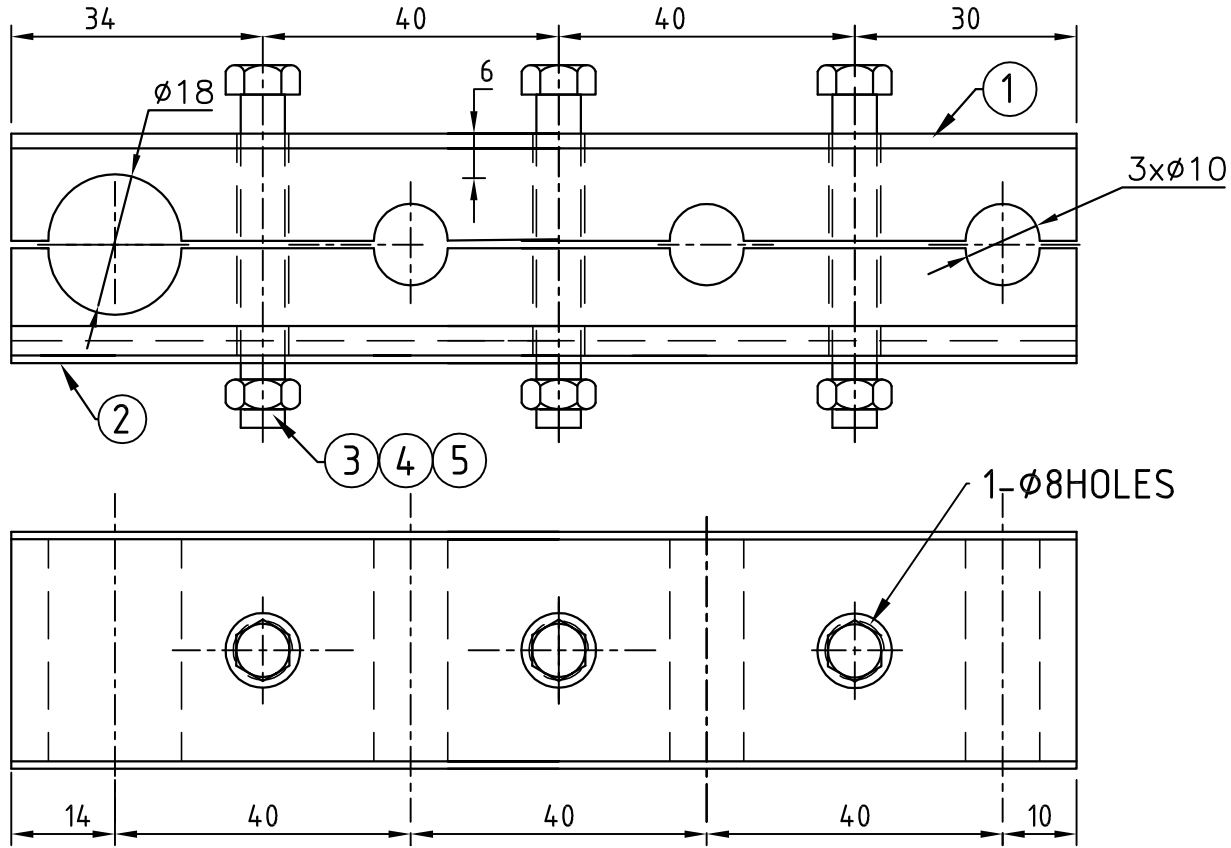


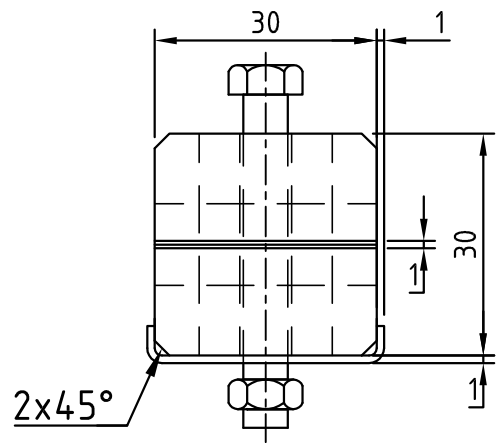
COPY RIGHT & CONFIDENTIAL THIS DOCUMENT IS THE EXCLUSIVE PROPERTY OF BEML & CONTAINS CONFIDENTIAL INFORMATION. THIS DOCUMENT OR ITS CONTENTS SHALL NOT BE USED, REPRODUCED OR DISCLOSED IN WHOLE OR IN PART, WITHOUT PRIOR WRITTEN PERMISSION OF BEML. THIS DOCUMENT & ALL ITS COPIES SHALL BE RETURNED TO BEML ON DEMAND DRAWING RELEASED FROM PLM, PHYSICAL SIGNATURE NOT REQUIRED

	N1	0.025
	N2	0.05
	N3	0.1
	N4	0.2
	N5	0.4
	N6	0.8
	N7	1.6
	N8	3.2
	N9	6.3
	N10	12.5
	N11	25
	N12	50
GRADE No.		
VALUE		
SYMBOL		
SURFACE ROUGHNESS		



UNCONTROLLED COPY

MACHINING DEVIATIONS FOR LINEAR DIMENSIONS	RANGE	0 – 6	6 – 30	30 – 120	120 – 315	315-1000	1000-2000	2000-4000	ABOVE 4000	RA
	TOLERANCE	±0.1	±0.2	±0.3	±0.5	±0.8	±1.2	±2	±3	~
FOR DIMENSIONAL TOLERANCES OF SHEET METAL PARTS AND WELDED STRUCTURES, REFER STD. RD-227										
UNSPECIFIED TOLERANCE FOR LINEAR AND ANGULAR DIMENSIONS REF. IS 2102 (PT-1) (MEDIUM)							QUALITY OF WELD JOINTS REF, RD 230 MEDIUM			
VALUES OF SURFACE TEXTURE SHALL BE AS PER COMPANY STD DS. 1012.C.						STATUS:				
WELDING SHALL BE CARRIED OUT AS PER IS: 9595-96										



- NOTE:
1. NYLOCK SHALL BE APPLIED TO ALL BOLTS FOR LOCK TIGHT.
  2. FIRST REMOVAL PREVAILING TORQUE OF NYLOCK IS 4.5 (kg.cm) FOR M6 BOLT.
  3. NYLON 6 GRADE 1011SW SHALL COMPLY TO FIRE STANDARD EN45545 HL3

5	3	RFW0920616	SPRING WASHER	B6 TO IS.3063-94 / MATL.AISI.304		
4	3	RFN3860652	HEXAGONAL HEAD NUT	HEX HEAD NUT M6 TO IS: 1364 (PART-3)-2002, / MATL. : ISO:3506-79,Gr-A2-70,STAINLESS STEEL		
3	3	RFB3850650	HEXAGONAL FLANGE BOLT	M6x50 TO ISO 4162-90,Gr-A2-70, STAINLESS STEEL, WITH PRE-APPLIED ADHESIVE.		
2	1		PLATE		SUS304	
1	1 SET		CLEAT		SEE NOTE 3	
SL.No.	QTY	PART / STOCK No.	DESCRIPTION	SIZE	COMPANY STD./I.S	Wt. (Kg)
			MATERIAL			
△			PRODUCT	MUMBAI METRO CARS L2 & L7		
△			REF DRG			
△			MATERIAL			
△			HEAT TREAT.	APPD	MS	05.03.20
△			SURFACE TREAT.	REVD	MS	05.03.20
△			TITLE	CHKD	SK	05.03.20
△			CLEAT (D18xD10xD10xD10)	DRWN	MR	05.03.20
△				SCALE	1:1	Wt.(Kg)
ALT.NO.	ECN NO/CHANGES	DATE	BY	CHKD	APPD	DRG No.
						525-60076
						ALT

BEML LIMITED