



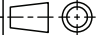
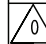
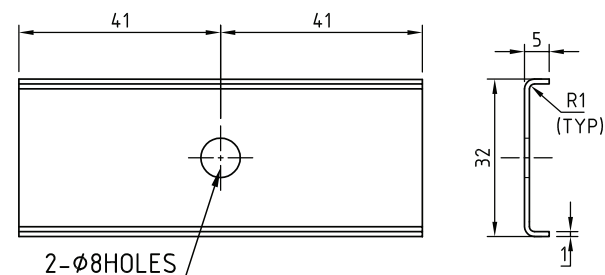
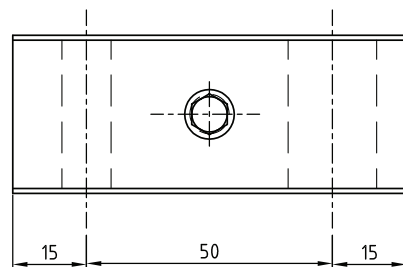


GRADE No.	N12	N11	N10	N9	N8	N7	N6	N5	N4	N3	N2	N1
VALUE	50/ 25	25/ 12.5	6.3/ 3.2	1.6/ 0.8	0.4/ 0.2	0.1/ 0.05	0.025/ 0.0125					
SYMBOL												

5	1	RFW0920616	SPRING WASHER			B6 TO IS.3063-94 / MATL:AISI304			
4	1	RFN3860652	HEXAGONAL HEAD NUT			M6 TO IS.1364(PT-3)-02/MATL. IS.3506-79, Gr-A2-70			
3	1	RFB3850650	HEXAGONAL FLANGE BOLT			M6X50 WITH NYLOCK BLUE PATCH PREAPPLIED ADHESIVE TO IS:1364(PT-1)-02/MATL:IS:1367(PT-14)-84, GR-A2-70			
2	1		PLATE				SUS304		
1	1 SET		CLEAT				SEE NOTE 3		
SL.No.	QTY	PART / STOCK No.		DESCRIPTION		SIZE		COMPANY STD./S	Wt. (Kg)
						MATERIAL			
					PRODUCT	MUMBAI METRO CARS L2 & L7			
					REF. DRG				
					MATERIAL				
					HEAT TREAT.	APPD		MS	05.03.2022
					SURFACE TREAT.	REVD		MS	05.03.2022
					TITLE	CHKD		SK	05.03.2022
					CLEAT (D22xD10)	DRWN		MR	05.03.2022
						SCALE		SHEET	Wt.(Kg)
						1:1		1 OF 1	-
						DRG No.		ALT	
ALT.NO.	ECN NO/CHANGES		DATE	BY	CHKD	APPD	BEMBL LIMITED		
							52560078		
						BEMBL LIMITED			



UNCONTROLLED COPY



1. NYLOCK SHALL BE APPLIED TO ALL BOLTS FOR LOCK TIGHT.
2. FIRST REMOVAL PREVAILING TORQUE OF NYLOCK IS 4.5 (kg.cm) FOR M6 BOLT.
3. NYLON 6 GRADE 1011SW SHALL COMPLY TO FIRE STANDARD EN45545 HL3



**bennett**  
NEW PROJECTS. NEW IDEAS.

BEML LIMITED

52560078

A3