

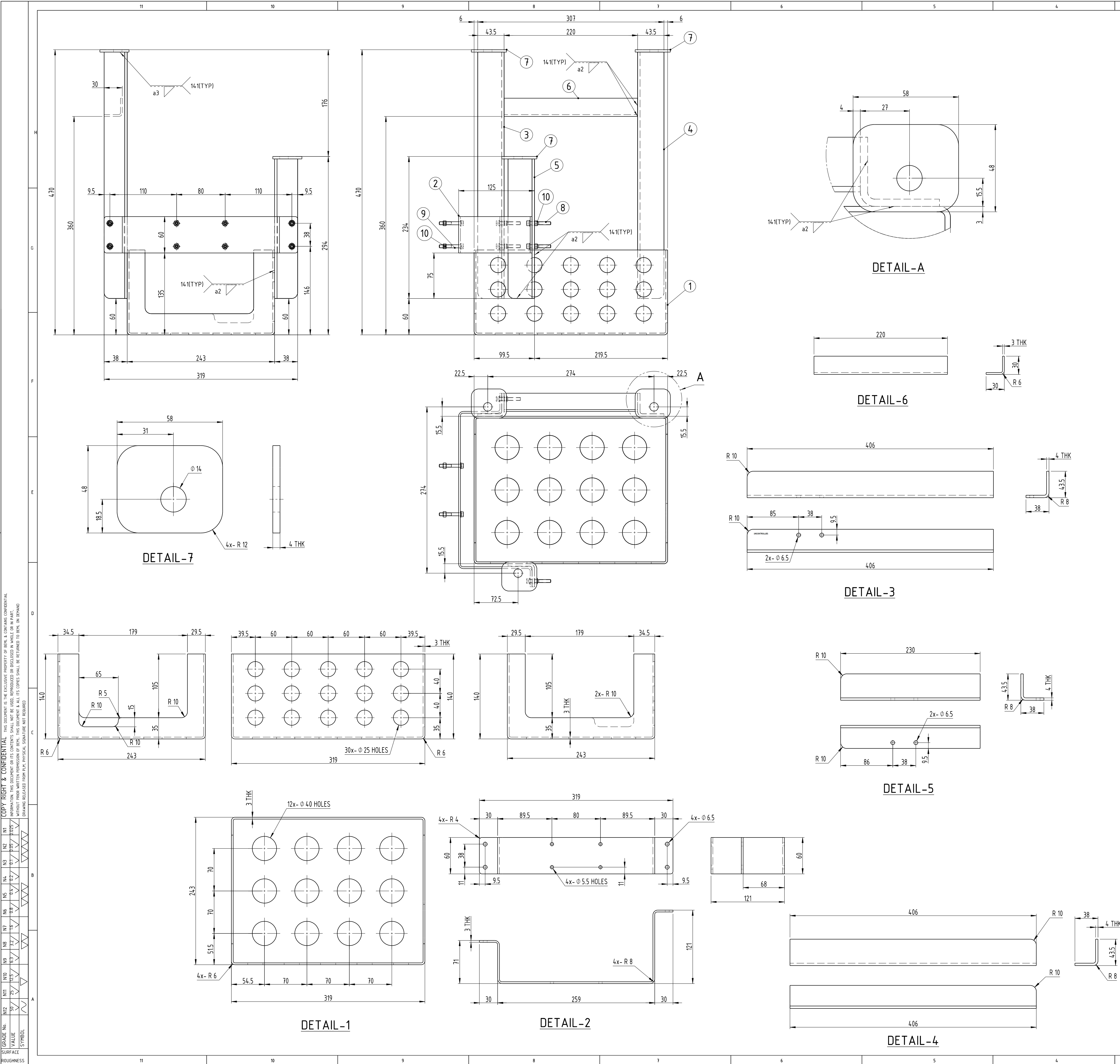
THIS DOCUMENT IS THE EXCLUSIVE PROPERTY OF BEML & CONTAINS CONFIDENTIAL INFORMATION. IT IS TO BE KEPT SECRET AND NOT TO BE DISCLOSED TO ANY OTHER PERSON OR ORGANIZATION WITHOUT PRIOR WRITTEN PERMISSION OF BEML. THIS DOCUMENT & ALL ITS CONTENTS SHALL BE RETURNED TO BEML ON DEMAND. DRAWING RELEASED FROM R&D, PHYSICAL SIGNATURE NOT REQUIRED.

GRADE No. 11 10 9 8 7 6 5 4 3 2 1 A1

VALUE 11 10 9 8 7 6 5 4 3 2 1

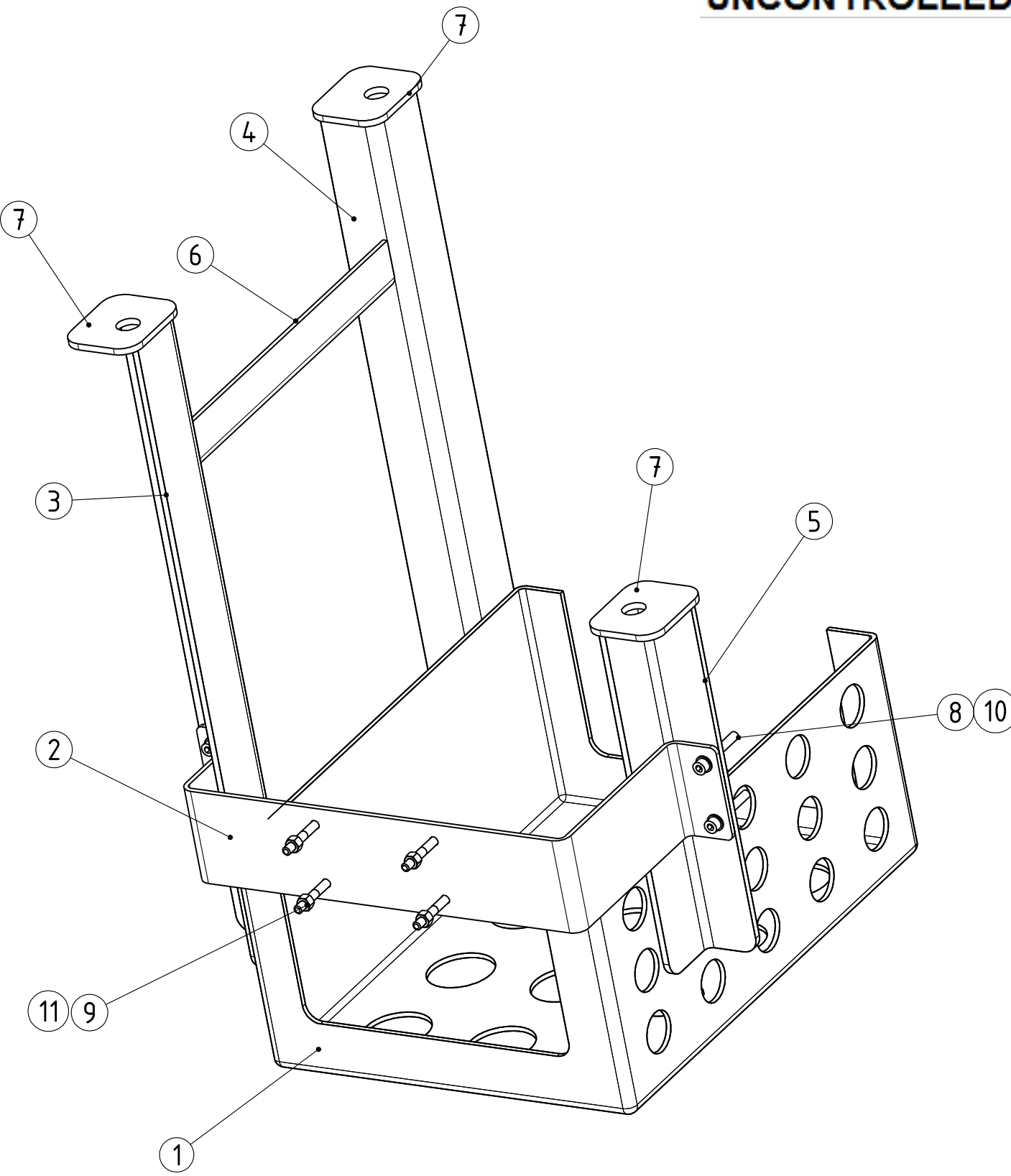
SYMBOL

SURFACE ROUGHNESS



3		2					1		
MACHINING DEVIATIONS FOR LINEAR DIMENSIONS		RANGE	0 - 6	6 - 30	30 - 120	120 - 315	315-1000	1000-2000	2000-4000
TOLERANCE			±0.1	±0.2	±0.3	±0.5	±0.8	±1.2	±2
ABOVE 4000									
RA									
~									
FOR DIMENSIONAL TOLERANCES OF SHEET METAL PARTS AND WELDED STRUCTURES, REFER STD. RD-227									
UNSPECIFIED TOLERANCE FOR LINEAR AND ANGULAR DIMENSIONS REF. IS 2102 (PT-1) (MEDIUM)								QUALITY OF WELD JOINTS REF. RD 230 MEDIUM	
VALUES OF SURFACE TEXTURE SHALL BE AS PER COMPANY STD DS. 1012.C								STATUS: PROTO/PRODUCTION	
WELDING SHALL BE CARRIED OUT AS PER IS: 9595-96									

UNCONTROLLED



ISOMETRIC VIEW

- NOTE
1. ALL DIMENSIONS ARE IN mm.
 2. INNER BEND RADIUS = THICKNESS.
 3. WELDING SYMBOLS ACCORDING TO ISO:2553.
 4. WELD AREAS SHALL BE PICKLED & PASSIVATED AND SHALL BE GROUND FINISH.
 5. ASSY SHALL BE FREE FROM BEND MARKS.
 6. REMOVE ALL SHARP EDGES AND BURRS.
 7. SAMPLE APPROVAL SHALL BE OBTAINED BEFORE BULK SUPPLIES.

11	4	-	HEX. HEAD FLANGE NUT	M5	ISO :7044 -83 / MATL: ISO:3506-79, Gr-A2-70, SS
10	4	-	HEX. HEAD FLANGE NUT	M6	ISO :7044 -83 / MATL: ISO:3506-79, Gr-A2-70, SS
9	4	-	HEX HEAD FLANGE BOLT	M5x35	ISO:4162-90,MATL: IS:1367-(P14), Gr-A2-70,SS
8	4	-	HEX. HEAD FLANGE BOLT	M6x16	ISO:4162-90,MATL: IS:1367-(P14), Gr-A2-70,SS
7	3	525-50043-07	MOUNTING PLATE	58x48x4t	SUS304/AISI304
6	1	525-50043-06	FRAME ANGLE	30x30x4t, L=220	SUS304/AISI304
5	1	525-50043-05	FRAME ANGLE	43.5x38x4t, L=230	SUS304/AISI304
4	1	525-50043-04	FRAME ANGLE	43.5x38x4t, L=406	SUS304/AISI304
3	1	525-50043-03	FRAME ANGLE	43.5x38x4t, L=406	SUS304/AISI304
2	1	525-50043-02	PUMP BRACKET	3t	SUS304/AISI304
1	1	525-50043-01	FRAME TRAY	3t	SUS304/AISI304
SL.No.	QTY.	PART / STOCK No.	DESCRIPTION	SIZE	COMPANY STD./IS
ALT.No.	ECN NO/CHANGES	DATE	BY	CHKD	APPD
MUMBAI METRO CARS - L2 & L7					
SUS304/AISI304 2B FINISH					
WASHER TANK BRACKET ASSY					
SCALE 1:3					
SHEET 1 OF 1					
Wt. (kg)					
ALT					
BEM BEM LIMITED					
525-50043					