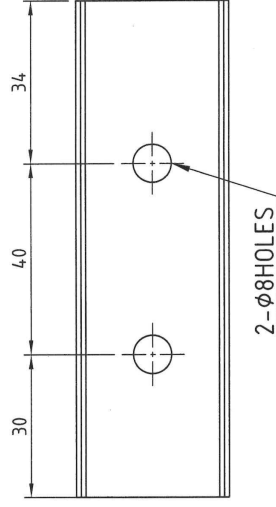
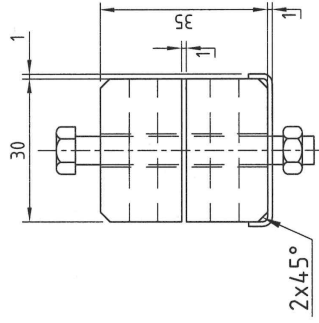


1. NYLOCK SHALL BE APPLIED TO ALL BOLTS FOR LOCK TIGHT.
2. FIRST REMOVAL PREVAILING TORQUE OF NYLOCK IS 4.5 (kg.cm) FOR M6 BOLT.
3. NYLON 6 GRADE 1011SW SHALL COMPLY TO FIRE STANDARD EN45545 HL3



UNCONTROLLED COPY

5	2	RFW0920616	SPRING WASHER	B6 TO IS:3063-94 / MATL:AISI304	
4	2	RFN3860652	HEXAGONAL HEAD NUT	M6 TO IS:1364(PT-3)-02/MATL: IS:3506-79, Gr-A2-70	
3	2	RFB3850650	HEXAGONAL FLANGE BOLT	M6X50 WITH NYLOCK BLUE PATCH PREAPPLIED ADHESIVE TO IS:1364(PT-1)-02/MATL:IS:1367(PT-14)-86, GR-A2-70	
2	1		PLATE	SUS304	
1	1 SET		CLEAT	SEE NOTE 3	
SL No.	QTY	PART / STOCK No.	DESCRIPTION	SIZE	MATERIAL
△			PRODUCT	MUMBAI METRO CARS L2 & L7	
			REF DRG		
			MATERIAL	APPD MS	31/01/2020
△			HEAT TREAT.	REVD MS	31/01/2020
			SURFACE TREAT.	CHKD SK	31/01/2020
△			TITLE	DRWN MR	31/01/2020
			CLEAT (D10x D10x D18) (P40)	SCALE 1:1	SHEET 1 of 1
△				DRG No.	-
				ALT	
				525-60085	
				Bent BEML LIMITED	
				NEW CHANDLER RD CHANDLER	
				ECON NO/CHANGES	
				DATE	
				BY	
				APPD	
				ALT NO.	

MUMBAI METRO CARS L2 & L7