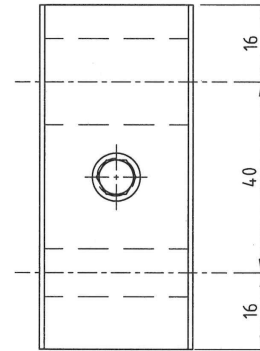
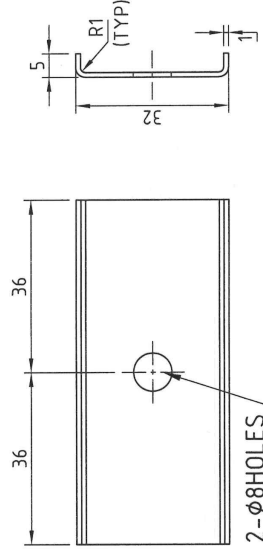


1. NYLOCK SHALL BE APPLIED TO ALL BOLTS FOR LOCK TIGHT.
2. FIRST REMOVAL PREVAILING TORQUE OF NYLOCK IS 4.5 (kg.cm) FOR M6 BOLT.
3. NYLON 6 GRADE 101SW SHALL COMPLY TO FIRE STANDARD EN45545 HL3



DETAIL P2



5	1	RFW0920616	SPRING WASHER	B6 TO IS.3063-94 / MATL.AISI.304			
4	1	RFN3860652	HEXAGONAL HEAD NUT	M6 TO IS.1364(PT-3)-02/MATL. IS.3506-T9, GR-A2-70			
3	1	RFB3850650	HEXAGONAL FLANGE BOLT	M6X50 WITH NYLOCK BLUE PATCH PREAPPLIED ADHESIVE TO IS.1364(PT-1)-02/MATL.IS.1363(PT-14)-84, GR-A2-70			
2	1		PLATE	SUS304			
1	1 SET		CLEAT	SEE NOTE 3			
SL.No.	QTY	PART / STOCK No.	DESCRIPTION	SIZE	MATERIAL		
▽			PRODUCT				
			REF DRG				
			MATERIAL				
			HEAT TREAT.	APPD MS	31.01.2020		
▽			SURFACE TREAT.	REVD MS	31.01.2020		
			TITLE	CHKD SK <i>[Signature]</i>	31.01.2020		
▽			CLEAT (D18xD18)(P40)	DRWN MR <i>[Signature]</i>	31.01.2020		
				SCALE 1:1	SHEET 1 OF 1	Wt.(Kg) -	
▽					DRG No.		
ALT NO.	ECH NO/CHANGES	DATE	BY	APPD	Beml BEML LIMITED <small>BEARINGS, ROLLERS, AND MORE</small>		
					525-60094		
					ALT 0		