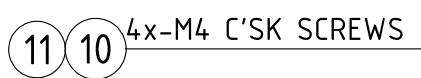


REFERENCE IMAGE

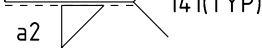


UNCONTROLLED

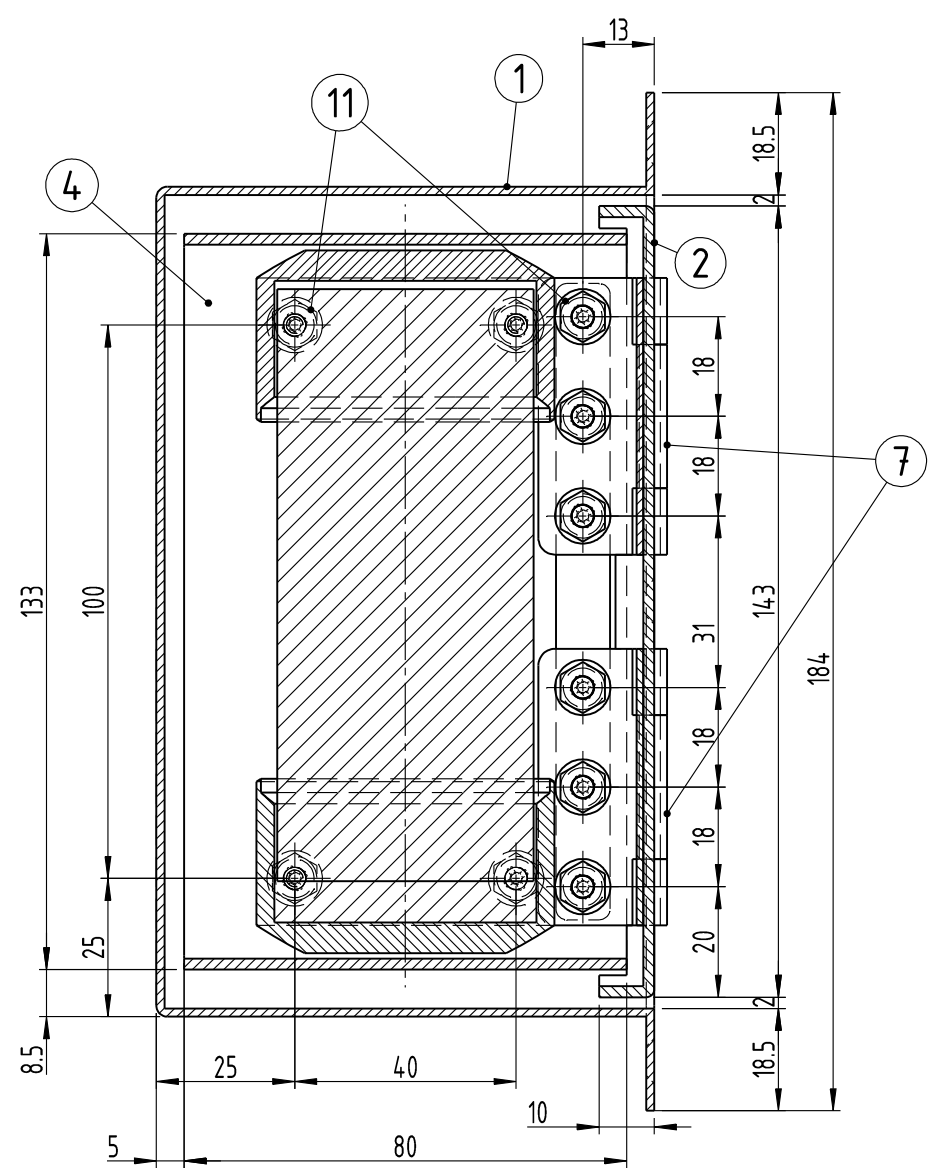
SL No.	QTY	PART / STOCK No.		DESCRIPTION				SIZE	COMPANY STD./IS		Wt. (Kg)
								MATERIAL			
△				PRODUCT	MUMBAI METRO CARS - L2 & L7						
				REF DRG							
△				MATERIAL	SUS304/AISI304-BRUSH FINISH AS PER ASTM A480 N.6 FINISH						
△				HEAT	APPRO			12.05.2020			
△				TREAT	REV'D			12.05.2020			
△				SURFACE	CHK'D			12.05.2020			
△				TREAT	DRWN			12.05.2020			
				BOX BLOCKING BELT							
				ASSY							
ALTN0.	ECN NO/CHANGES	DATE	BY	CHK'D	APPRO	BEML LIMITED				ALT	
						1:8				Wt. -	
						SCALE				SHEET	
						1 OF 2				1 OF 2	
						DRG No.				ALT	
						525-18217				△	



SECTION B-B



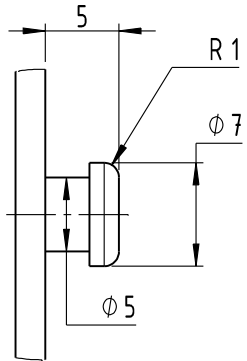
SECTION C-C



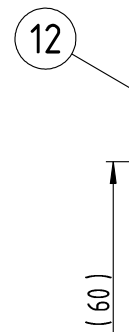
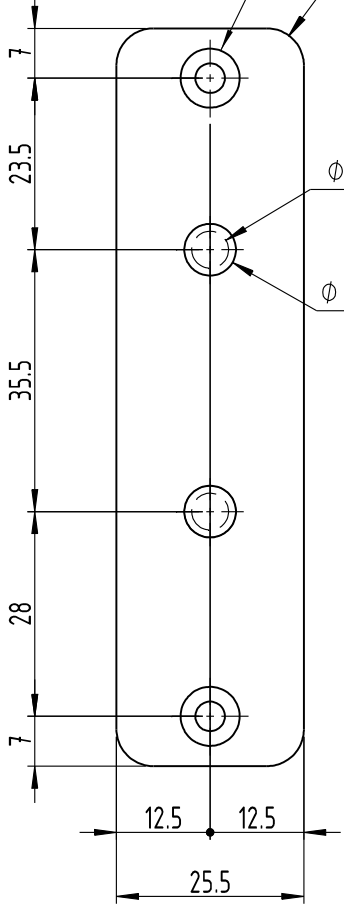
INTERNAL VIEW



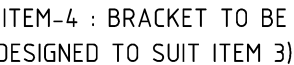
DETAIL-A



DETAIL - 12



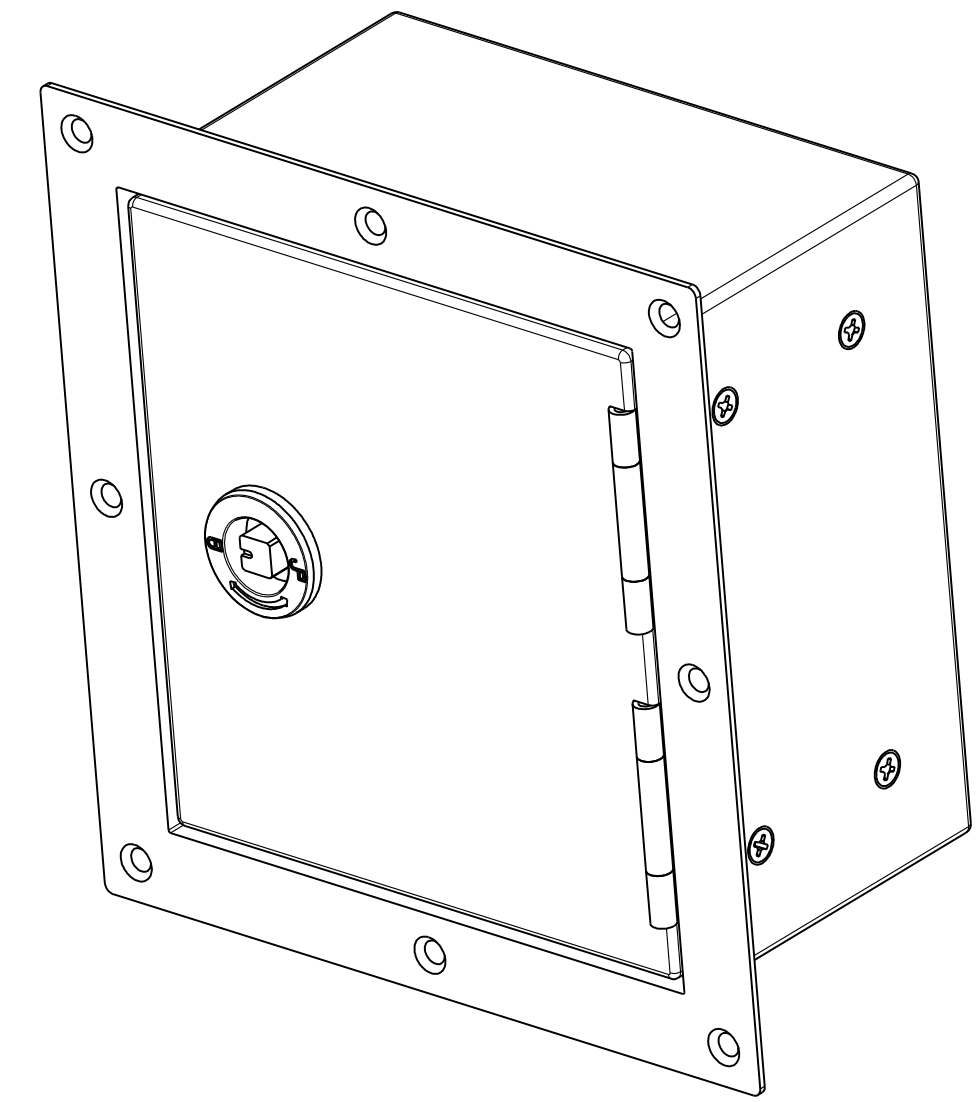
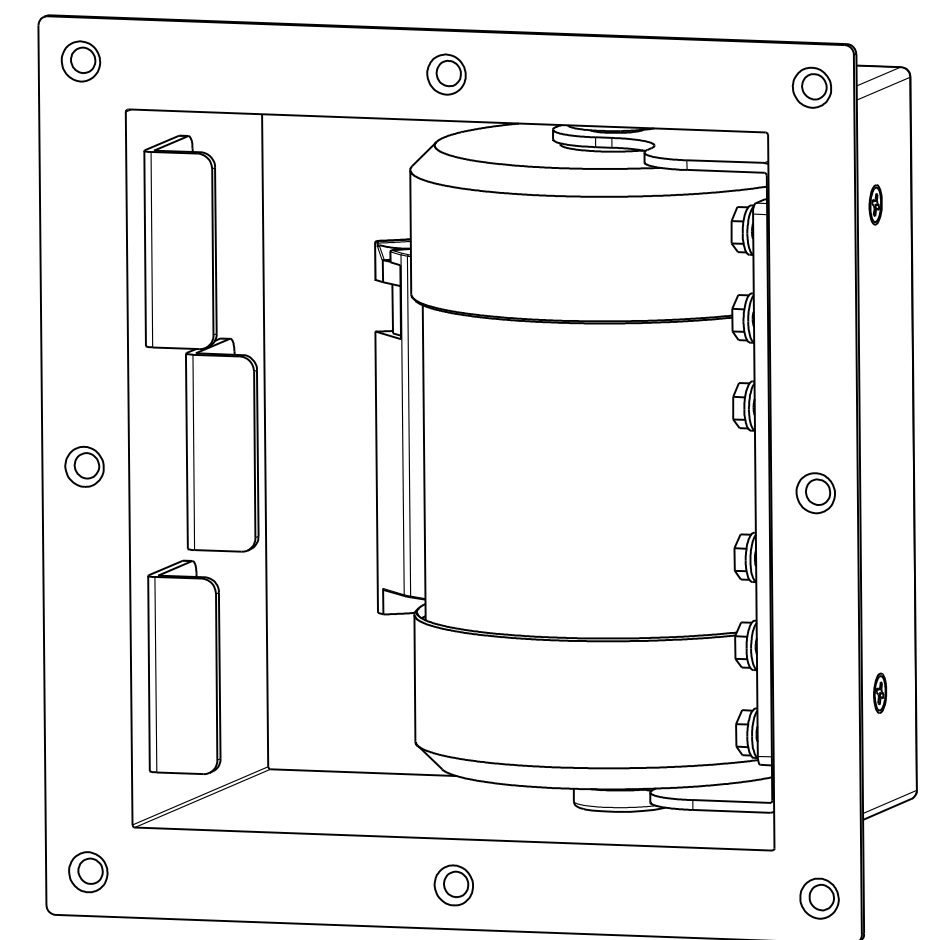
DETAIL-3



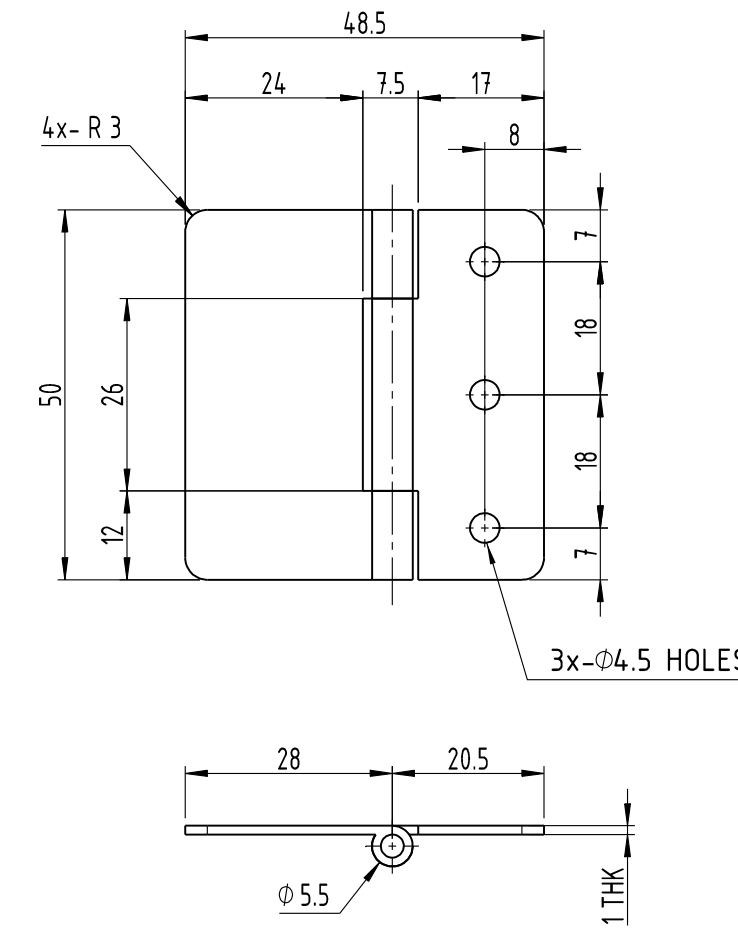
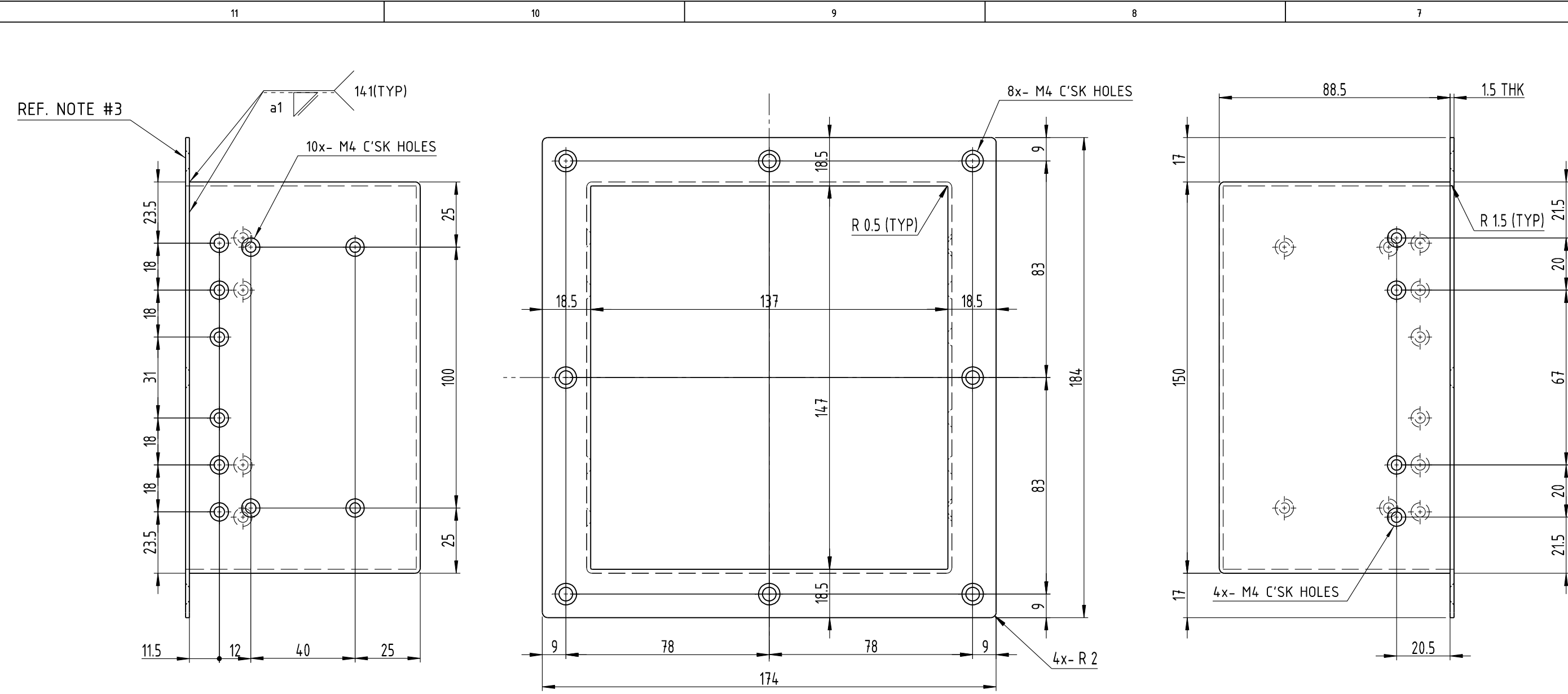
MOUNTING BRACKET

MOUNTING BRACKET

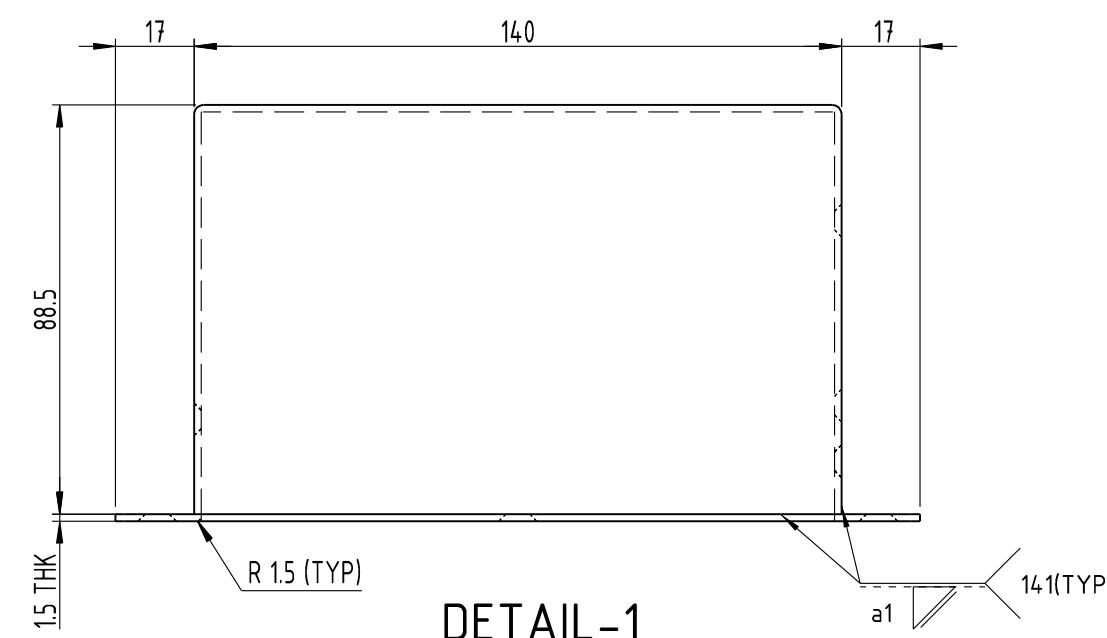
3		2						1			
MATCHING DEVIATIONS FOR LINEAR DIMENSIONS		RANGE	0 - 6	6 - 30	30 - 120	120 - 315	315-1000	1000-2000	2000-4000	ABOVE 4000	RA
TOLERANCE		±0.1	±0.2	±0.3	±0.5	±0.8	±1.2	±2	±3	~	
FOR DIMENSIONAL TOLERANCES OF SHEET METAL PARTS AND WELDED STRUCTURES, REFER STD. RD-227											
UNSPECIFIED TOLERANCE FOR LINEAR AND ANGULAR DIMENSIONS IS: 2102 (PT-1) [MEDIUM]								QUALITY OF WELD JOINTS REF. RD 230 MEDIUM			
VALUES OF SURFACE TEXTURE SHALL BE AS PER COMPANY STD. IS. 1012.C								STATUS: PROTO/PRODUCTION			
WELDING SHALL BE CARRIED OUT AS PER IS: 9595-96											

ISOMETRIC VIEWISOMETRIC VIEW (INTERNAL)

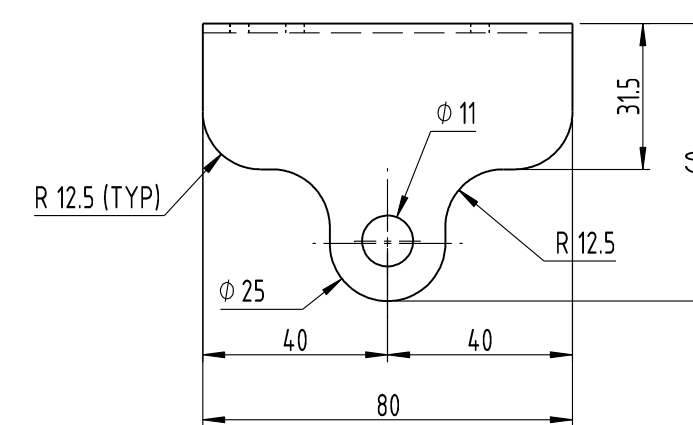
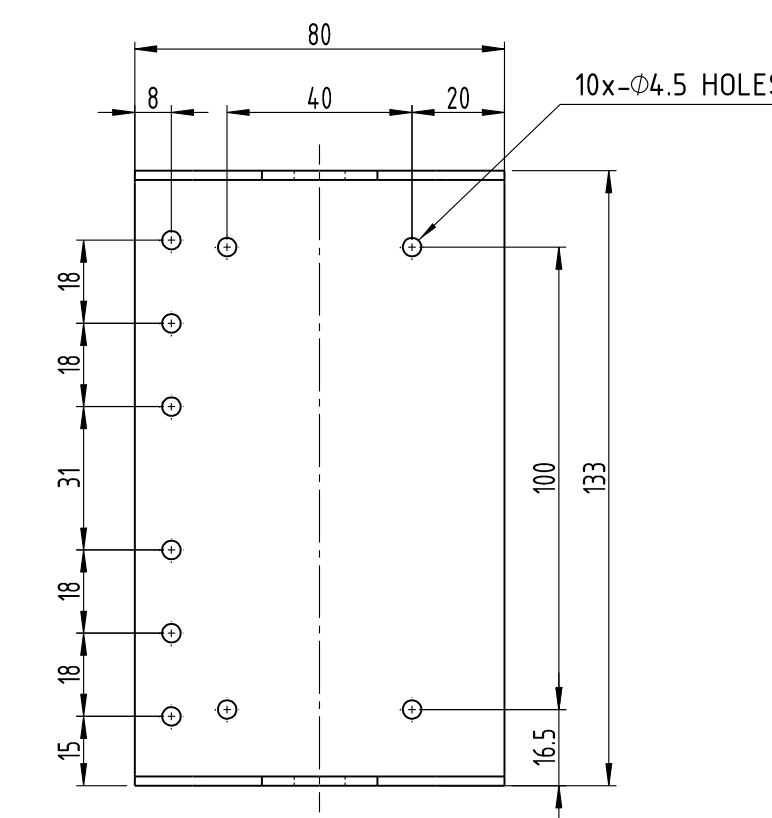
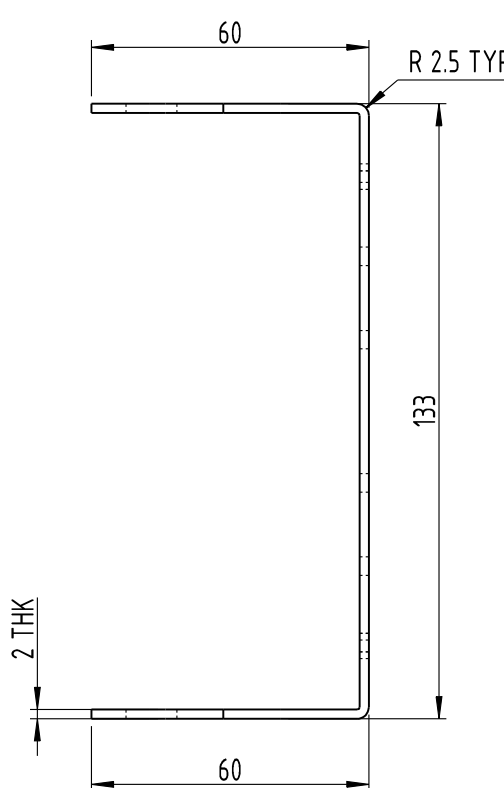
12	1	525-18217-12	CORDON BRACKET	100x25.5x2t	SUS304/AISI304-BRUSH FINISH	
11	14	-	HEX. HEAD FLANGE NUT	M4	ISO-7044/MAT'L : ISO-3506, Gr. A2-70, SS	
10	8	-	CROSS RECESSED C'SK HD SCREW	M4x12	IS-7485 /MAT'L : ISO-3506, Gr. A2-70,SS	
9	6	-	CROSS RECESSED C'SK HD SCREW	M4x16	IS-7485 /MAT'L : ISO-3506, Gr. A2-70,SS	
8	1	525-18217-08	PACKING	115x10x4t	EPDM RUBBER	
7	2	525-18217-07	HINGE	1t	SUS304/AISI304-2B FINISH	
6	3	525-18217-06	STOPPER	27x15x2t, L=40	SUS304/AISI304-2B FINISH	
5	1	525-18217-05	LOCKING DEVICE	-	SUS304/AISI304, MAKE : COHAMA/DIRAK/SOUTH.CO	
4	1	525-18217-04	MOUNTING BRACKET	2t	SUS304/AISI304-2B FINISH	
3	1	525-18217-03	RETRACTABLE BELT ASSY	48±2 W, L=3500	COMMERCIAL	
2	1	525-18217-02	COVER	2t	SUS304/AISI304-BRUSH FINISH	
1	1	525-18217-01	BOX BLOCKING BELT	15t	SUS304/AISI304-BRUSH FINISH	
SL.No.	QTY	PART / STOCK No.	DESCRIPTION	SIZE	COMPANY STD./S. I.	Wt. (Kg)
					MATERIAL	
			MUMBAI METRO CARS - L2 & L7			
			SUS304/AISI304-BRUSH FINISH AS PER ASTM A480 NO.6 FINISH			
			PRODUCT			
			REF DRG			
			MATERIAL			
			HEAT TREAT.	APPD		12.05.2020
			SURFACE TREAT.	REV'D		12.05.2020
			TREAT.	CHKD		12.05.2020
			TITLE	DRWN		12.05.2020
			BOX BLOCKING BELT ASSY			
			SCALE			Wt. -
			1:8			SHEET 2 OF 2
			BRG No.			ALT.
ALT.NO			ECN NO/CHANGES			
DATE			BY			
CHKD			APPD			
			BEML LIMITED			
525-18217						
3			2			A1



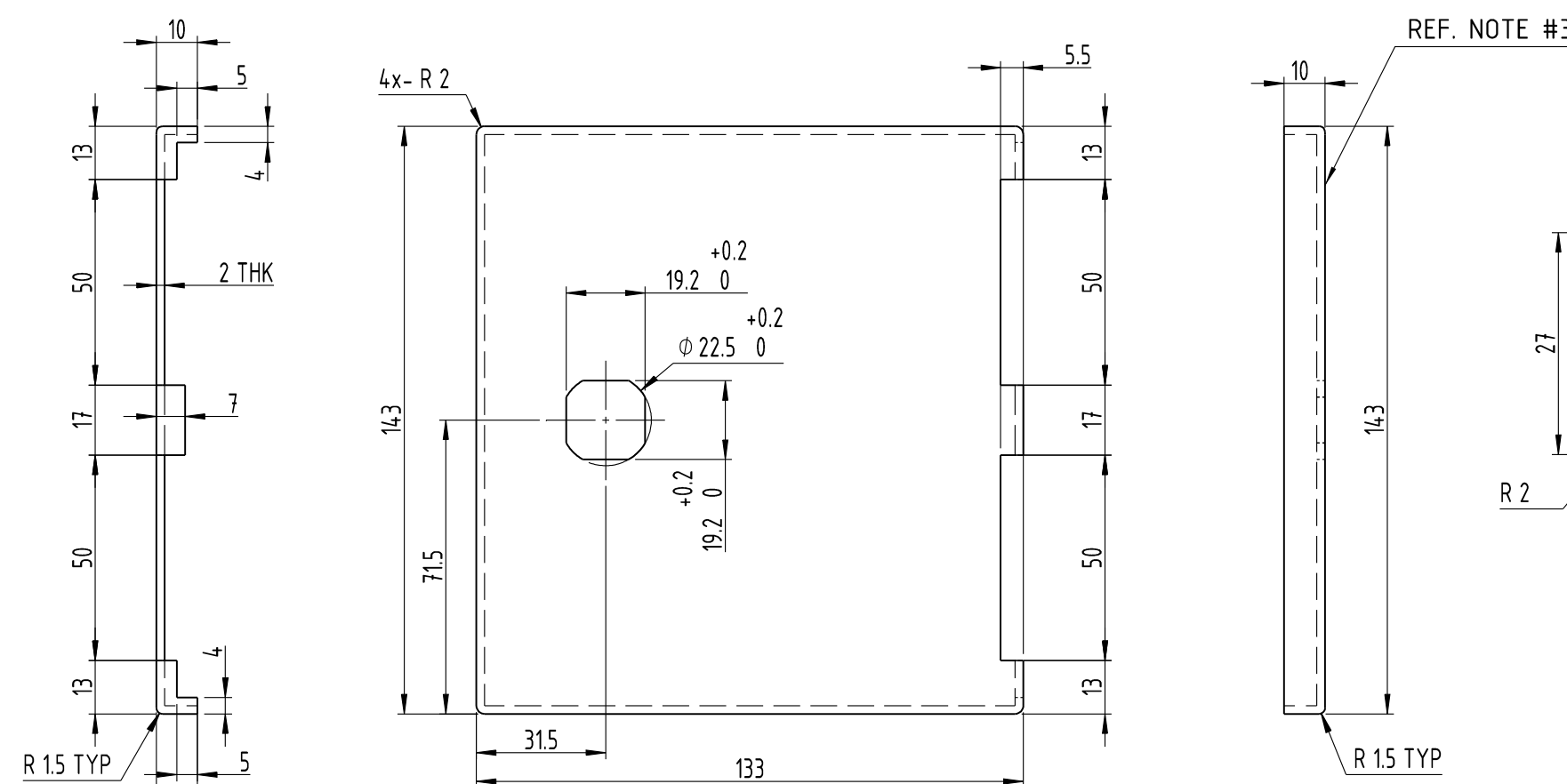
DETAIL-7



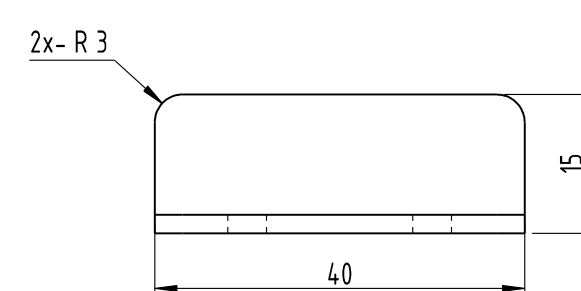
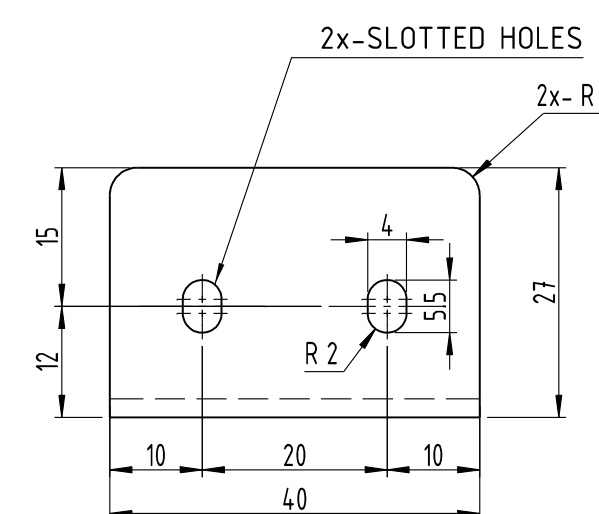
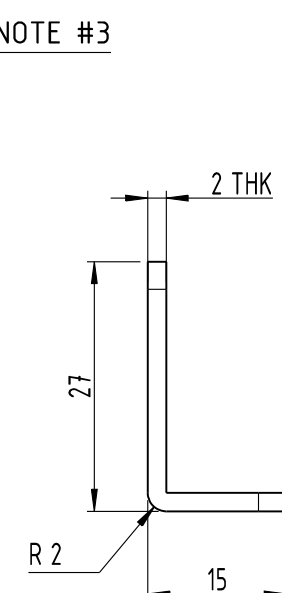
DETAIL-1



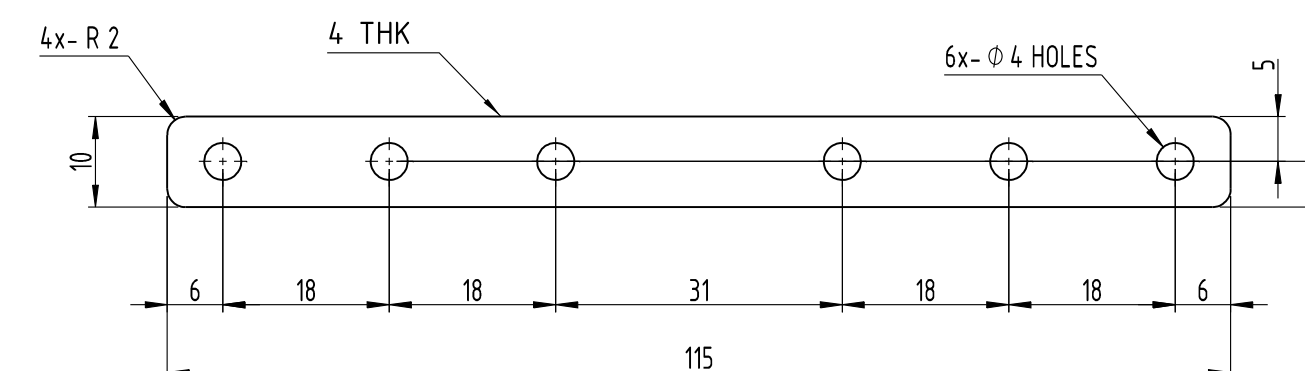
DETAIL-4



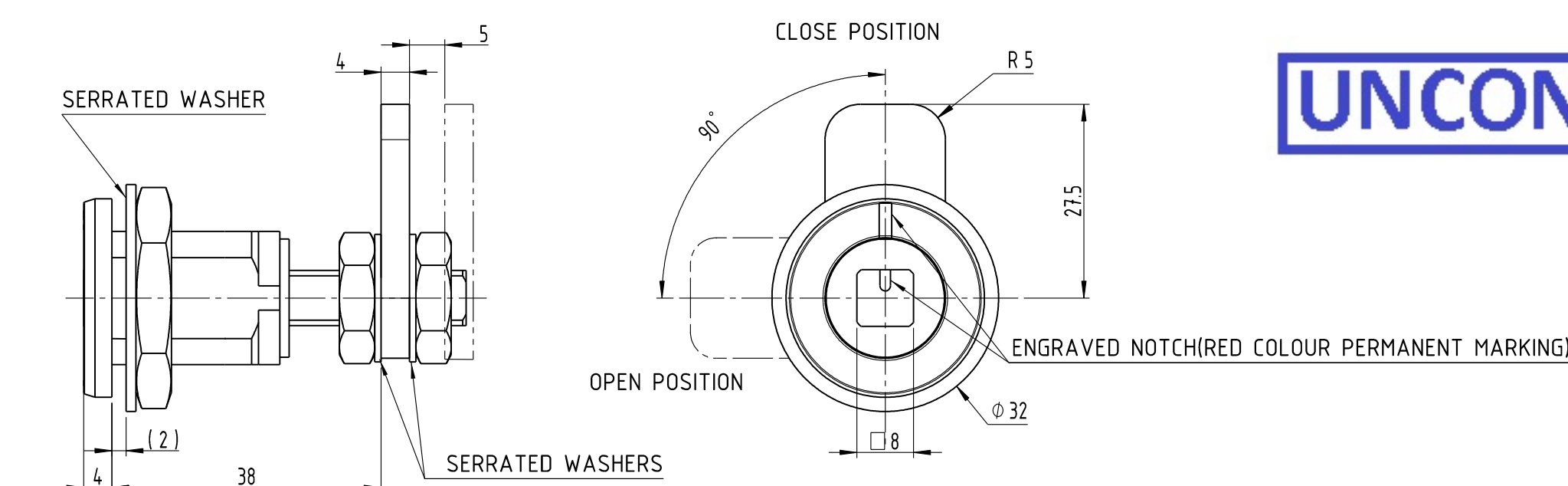
DETAIL-2



DETAIL-6



DETAIL-8



DETAIL- 5

UNCONTROLLED

NOTE:

1. ALL DIMENSIONS ARE IN mm.
2. THE ITEM SHALL COMPLY TO TDC DOC NO. GR/TD/5132.
3. THE OUTER EXPOSED SURFACE SHALL BE BRUSH FINISHED TO ASTM A480, NO.6 FINISH.
4. ITEM 12 SHALL SUIT TO ITEM 3 FOR PROPER FIXING/MOUNTING.
5. ITEM 3-BELT MATERIAL SHALL HAVE WEIGHT & SURFACE AREA LESS THAN 0.1 kg & 0.2 m2.
6. ITEM 8, RUBBER PACKING SHALL COMPLY WITH FIRE SAFETY STANDARD EN 45545-HL3 REQUIREMENTS.
7. THE LOCKING DEVICE SHALL BE ROBUST IN DESIGN AND SHALL BE MADE OF STAINLESS STEEL MATERIAL
MAKE : COHAMA/DIRAK/SOUTH.CO.
8. WELDING SYMBOLS ACCORDING TO ISO:2553.
9. THE WELDS SHALL BE GROUND FINISHED.
10. WELD AREAS SHALL BE PICKLED & PASSIVATED.
11. REMOVE SHARP EDGES AND BURRS.
12. SAMPLE APPROVAL SHALL BE OBTAINED BEFORE BULK PRODUCTION.