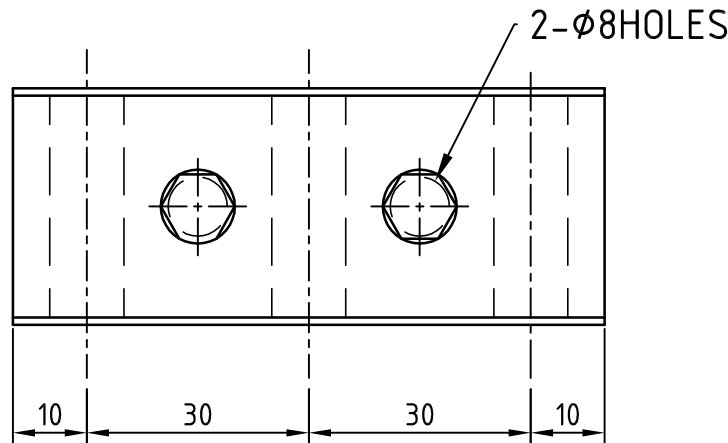
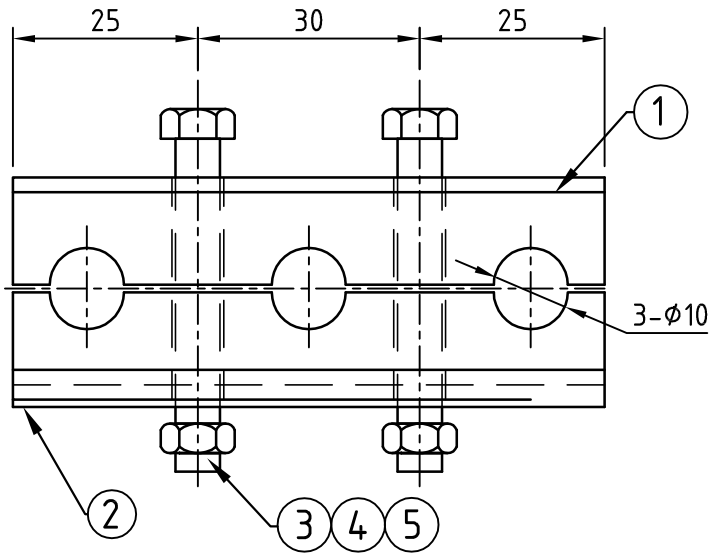


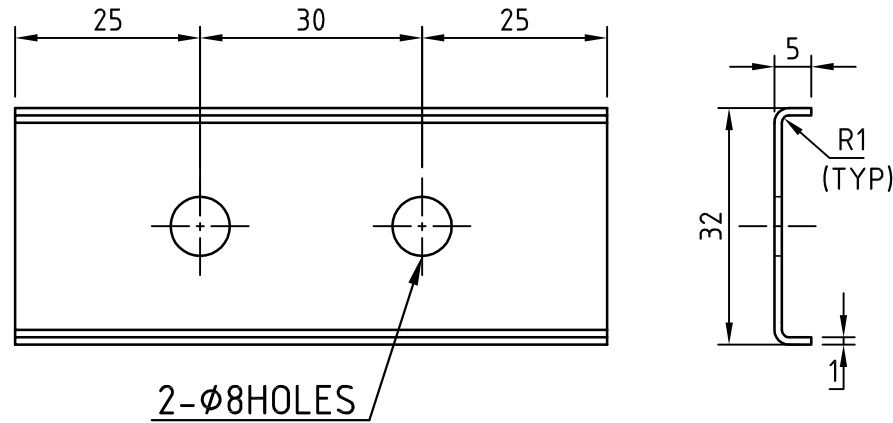
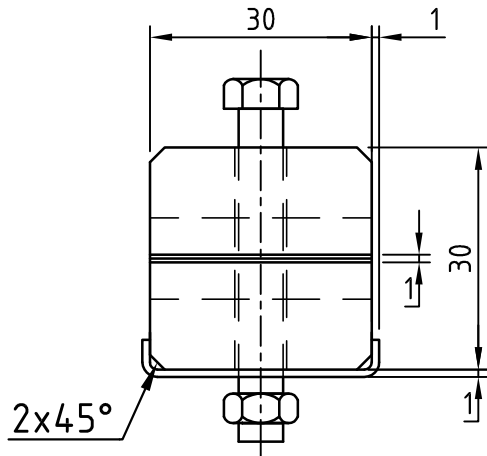
COPY RIGHT & CONFIDENTIAL THIS DOCUMENT IS THE EXCLUSIVE PROPERTY OF BEML & CONTAINS CONFIDENTIAL INFORMATION. THIS DOCUMENT OR ITS CONTENTS SHALL NOT BE USED, REPRODUCED OR DISCLOSED IN WHOLE OR IN PART, WITHOUT PRIOR WRITTEN PERMISSION OF BEML. THIS DOCUMENT & ALL ITS COPIES SHALL BE RETURNED TO BEML ON DEMAND DRAWING RELEASED FROM PLM, PHYSICAL SIGNATURE NOT REQUIRED

GRADE No.	N1	N2	N3	N4	N5	N6	N7	N8	N9	N10	N11	N12	SURFACE ROUGHNESS
VALUE	0.025	0.05	0.1	0.2	0.4	0.8	1.6	3.2	6.3	12.5	25	50	
SYMBOL													









NOTE:

1. NYLOCK SHALL BE APPLIED TO ALL BOLTS FOR LOCK TIGHT.
2. FIRST REMOVAL PREVAILING TORQUE OF NYLOCK IS 4.5 (kg.cm) FOR M6 BOLT.
3. NYLON 6 GRADE 1011SW SHALL COMPLY TO FIRE STANDARD EN45545 HL3



DETAIL P2

UNCONTROLLED COPY

5	2	RFW0920616	SPRING WASHER	B6 TO IS.3063-94 / MATL.AISI.304			
4	2	RFN3860652	HEXAGONAL HEAD NUT	M6 TO IS.1364(PT-3)-02/MATL. IS.3506-79, Gr-A2-70			
3	2	RFB3850650	HEXAGONAL FLANGE BOLT	M6x50 TO ISO 4162-90,Gr-A2-70, STAINLESS STEEL, WITH PRE-APPLIED ADHESIVE.			
2	1		PLATE		SUS304		
1	1 SET		CLEAT		SEE NOTE 3		
SL.No.	QTY	PART / STOCK No.	DESCRIPTION	SIZE	COMPANY STD./I.S	Wt. (Kg)	
					MATERIAL		
							
							
							
							
ALT.NO.	ECN NO/CHANGES	DATE	BY	CHKD	APPD		
				 BEM LIMITED <small>NEW FRONTIERS. NEW DREAMS.</small>		<div>DRG No.</div> <div>525-60068</div>	
				<div>ALT</div> <div></div>			

BEML LIMITED
NEW FRONTIERS. NEW DREAMS

525-60068

A3