

Document No.: DEP/PTS/Fitment Kit/TWMP-T90/01

Date: 18<sup>th</sup> March 2021

***Procurement Technical Specification***  
*of*  
***Fitment Kit for***  
***TWMP T90 Mine Plough Project***

**BEML LTD**

Ministry of Defence (Govt. of India Undertaking)

Defence Planning

BEML Nagar, K.G.F - 563 115, Karnataka, India

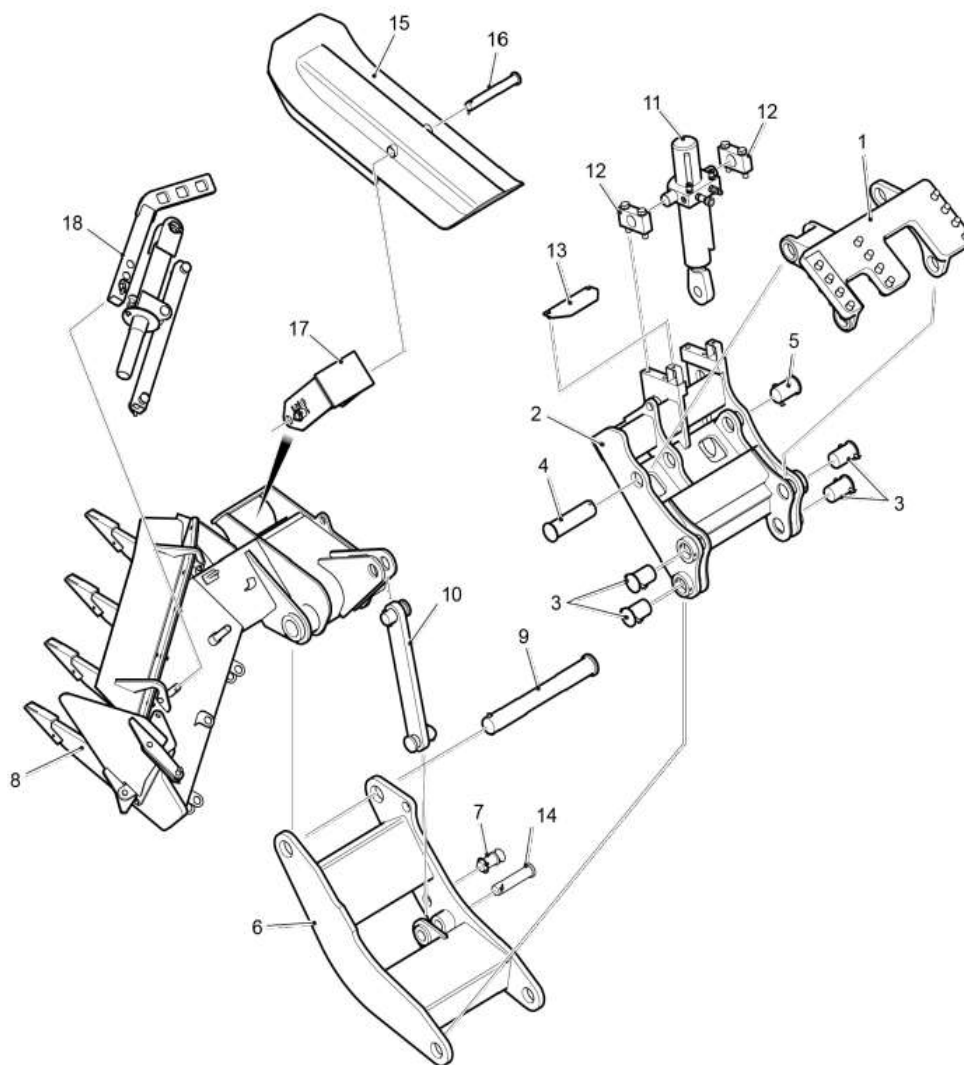
**Procurement Technical Specifications for  
TWMP Fitment Kit (P/ No 710 ZZB 0062)**

The TWMP Fitment Kit (710ZZB0062) Consists of

Sl. No	Part Number / Descriptions	Qty / Eqpt	Ref	Approximate weight of finished structure	Supply Condition	Details of assembly
1	710 MP 02438/ Plough Assembly LH	1	Fig _A	341 Kgs	To be supplied in assembled condition as per BEML Drawing & Standards	Pl. Refer Pg No: 2-31
2	710 MP 02413/ Plough Assembly RH	1	Fig _B	341 Kgs	To be Supplied in Assembled Condition as per BEML Drawing & Standards	Pl. refer Pg No: 32-38
3	710 HS 02007/ Powerpack Assembly	1	Fig _C	16 Kgs	To be Supplied in Assembled Condition as per BEML Drawing & Standards	Pl. refer Pg No: 39-40

The exploded view of each of the above assemblies with Bill of Material (BoM) is brought out in the following pages for easy understanding.

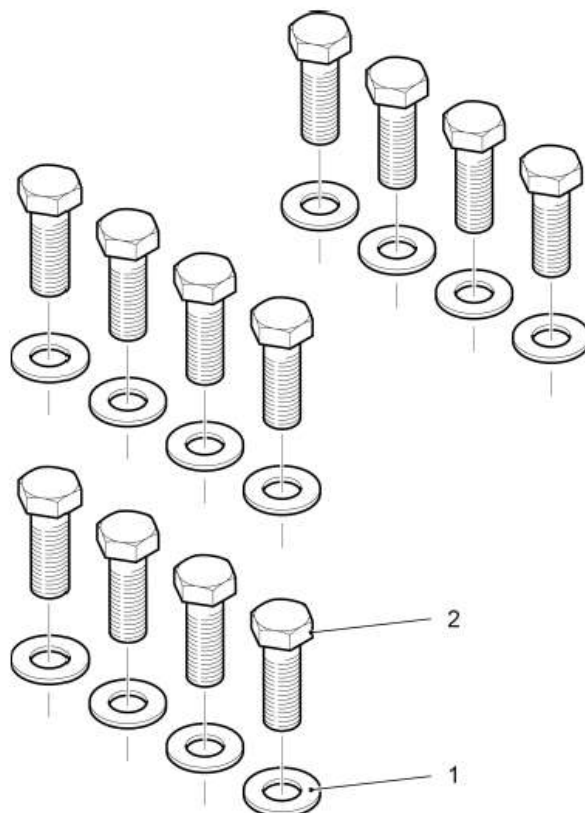
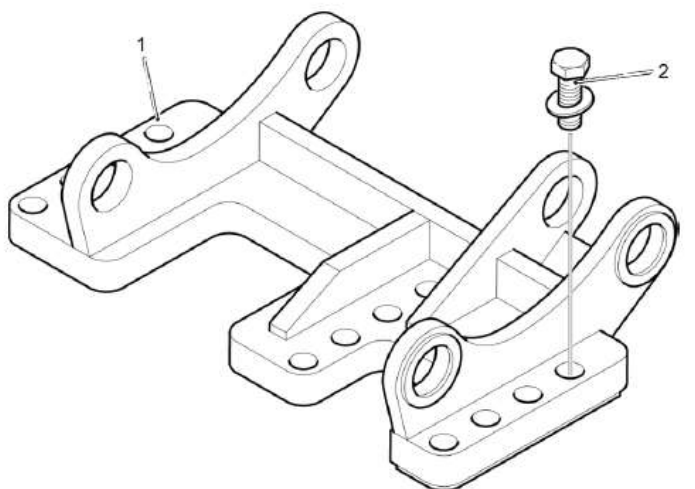
**Fig\_A Plough Assembly LH (710 MP 02438)**



Supply condition – To be supplied in assembled condition

Header Level BOM for Plough Assembly LH (710 MP 02438) as per illustrated figure above

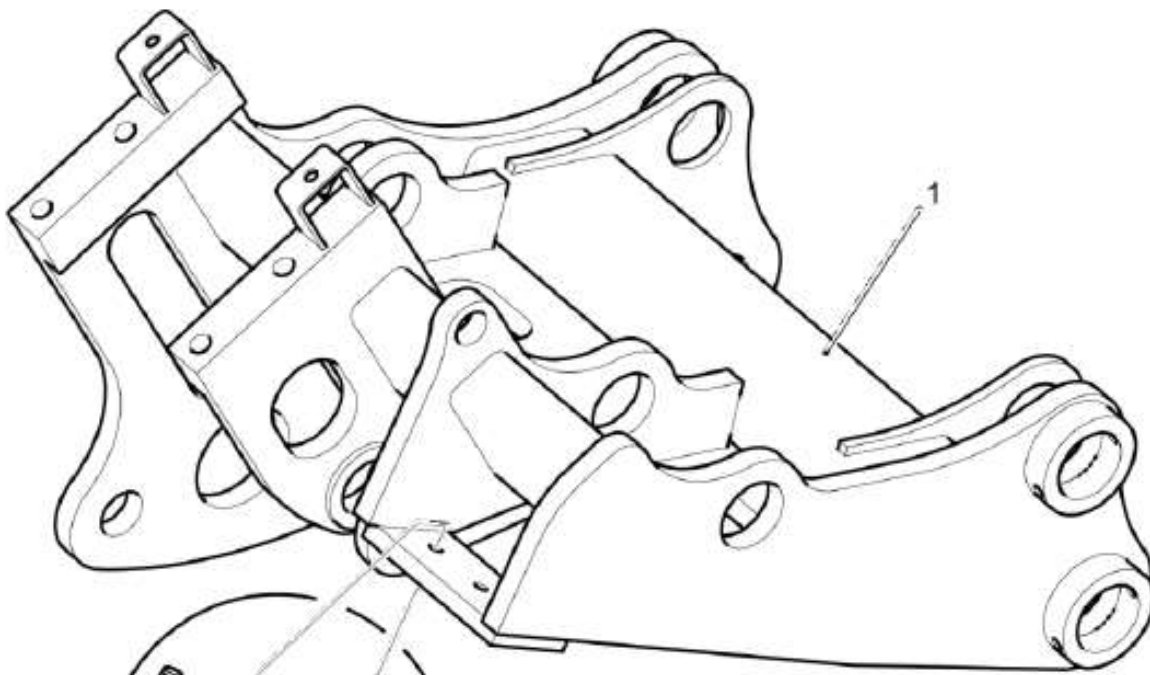
Sl. No	Part Number	Descriptions	Qty / Eqpt	Ref	Supply Condition
1	710MP02146	VEHICLE ADAPTOR BRACKET Main ASSY (LH)	1	Fig_1	To be supplied in assembled cond.
2	710 MP 03823	MOUNTING BRACKET ASSY (LH)	1	Fig_2	To be supplied in assembled cond
3	710 MP 03831	MOUNTING PIN ASSY	4	Fig_3	To be supplied in assembled cond
4	710MP02195	BOOM / ADAPTOR OUTER PIN ASSY	1	Fig_4	To be supplied in assembled cond
5	710MP02187	BOOM / ADAPTOR INNER PIN ASSY	1	Fig_5	To be supplied in assembled cond
6	710MP02162	BOOM ASSY LH	1	Fig_6	To be supplied in assembled cond
7	710MP02202	TRAVEL LOCK PIN ASSY	1	Fig_7	To be supplied in assembled cond
8		Plough Blade Assembly LH	1	Not in Scope	-
9	710MP02219	BOOM / BLADE PIN ASSY	1	Fig_8	To be supplied in assembled cond
10	710MP02227	TOP LINK ASSY	1	Fig_9	To be supplied in assembled cond
11		LIFT CYLINDER ASSY	1	Not in Scope	-
12	710MP02251	TRUNNION LIFT CYLINDER ASSY	2	Fig_10	To be supplied in assembled cond
13	710MP02268	HOSE GUARD ASSY	1	Fig_11	To be supplied in assembled cond
14	710MP02276	LIFT CYLINDER / BOOM PIN ASSY	1	Fig_12	To be supplied in assembled cond
15	710MP02284	SKID ASSEMBLY	1	Fig_13	To be supplied in assembled cond
16	710 MP 02308	SKID PIN ASSY	1	Fig_14	To be supplied in assembled cond
17	710 MP 02316	SKID ADJUSTER MAIN ASSY	1	Fig_15	To be supplied in assembled cond
18	710 MP 02332	FITTING EQUIPMENT ASSY LH	1	Fig_16	To be supplied in assembled condPacked in Wooden box

**Fig\_1**
**VEHICLE ADAPTOR BRACKET ASSY (LH)(710MP02146)**


BEML PART NO			DESCRIPTION	IL QTY	Scope of Supply
1	2	3			
710MP02146			<b>VEHICLE ADAPTOR BRACKET ASSY (LH)</b>	1	To be supplied along with Plough Assembly LH with Assembled condition (Except Mounting Fasteners)
	710 MP 12717		VEHICLE ADAPTOR BRACKET LH	1	
		710 MP 14694	MOUNTING PLATE	1	
		710 MP 14701	PLATE	1	
		710 MP 14718	SUPPORT PLATE-1	1	
		710 MP 14726	WASHER	2	
		710 MP 14734	SUPPORT PLATE-2	1	
		710 MP 14742	MOUNTING BRACKET-1	1	
		710 MP 14759	MOUNTING BRACKET-2	1	
		710 MP 14767	MOUNTING BRACKET-3	1	
			MOUNTING FASTENERS	1	
	710 MP 12725		WASHER, M24, 200 HV, ST, ZP ND0307	12	
	710 MP 12733		SCREW, HEX HD, M24X1.5P X 70, GR 8.8, ZP	12	

Scope of Supply:

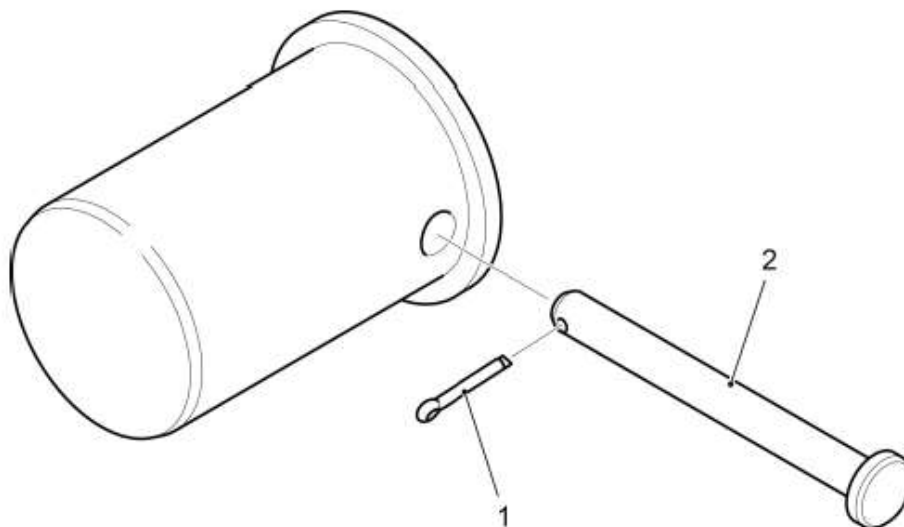
- 1) Complete Fabrication and Machining of Vehicle Adaptor Bracket as per drawing.
- 2) For technical requirement please refer Appendix- A of this document.
- 3) Mounting Fasteners to be supplied in packed condition.

**Fig\_2****MOUNTING BRACKET ASSY (LH) (710 MP 03823)**

BEML PART NO			DESCRIPTION	IL QTY	Scope of Supply
1	2	3			
	710 MP 03823		MOUNTING BRACKET ASSY LH	1	To be supplied along with Plough Assembly LH with Assembled condition
		710 MP 14775	INNER PLATE	1	
		710 MP 14783	OUTER PLATE	1	
		710 MP 14791	SUPPORT SECTION	2	
		710 MP 14807	TOP LINK SUPPORT PLATE-1	1	
		710 MP 14815	CYLINDER FIXING BLOCK	2	
		710 MP 14823	CYLINDER PROTECTION PLATE	2	
		710 MP 14831	TOP LINK SUPPORT PLATE-2	1	
		710 MP 14848	BOTTOM PLATE	1	
		710 MP 14856	MOUNTING PIN PLATE-1	1	
		710 MP 14864	SUPPORT PLATE	1	
		710 MP 14872	ADAPTOR BRACKET MOUNTING PLATE-1	1	
		710 MP 14889	SUPPORT BOSS	1	
		710 MP 14897	BOSS-1	2	
		710 MP 14904	ADAPTOR BRACKET MOUNTING PLATE-2	1	
		710 MP 14912	MOUNTING PIN PLATE-2	1	
		710 MP 14929	MOUNTING PIN PLATE-3	1	
		710 MP 14937	BOSS-2	2	
		710 MP 14945	SPACER	1	

Scope of Supply:

- 1) Complete Fabrication and Machining of Mounting Bracket as per drawing.
- 2) For Technical requirement please refer Appendix A of this document.

**Fig\_3**
**MOUNTING PIN ASSY (710 MP 03831)**


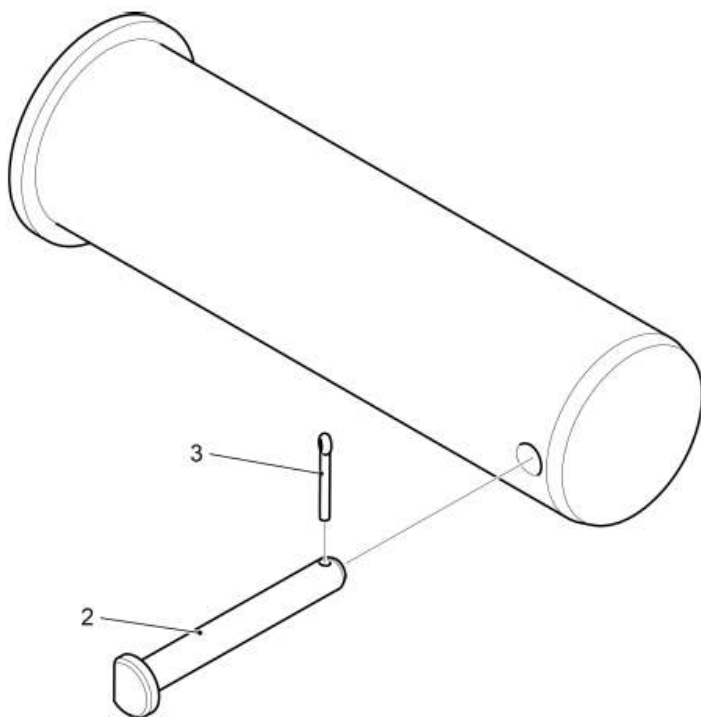
BEML PART NO		DESCRIPTION	IL QTY	Scope of Supply
1	2			
710 MP 03831		<b>MOUNTING PIN ASSY</b>	4	To be supplied along with Plough Assembly LH with Assembled condition
	710 MP 12758	MOUNTING PIN	1	
	710 MP 12766	CLEVIS PIN TO ISO 2341B Ø10 X 100	1	
	710 MP 12774	SPLIT PIN - DIN 94 Ø3.2 X 20L	1	

**Scope of Supply:**

- 1) Complete Machining and Heat Treatment of Mounting Pin as per drawing.
- 2) For Technical requirement please refer Appendix B of this document.

**Fig\_4**

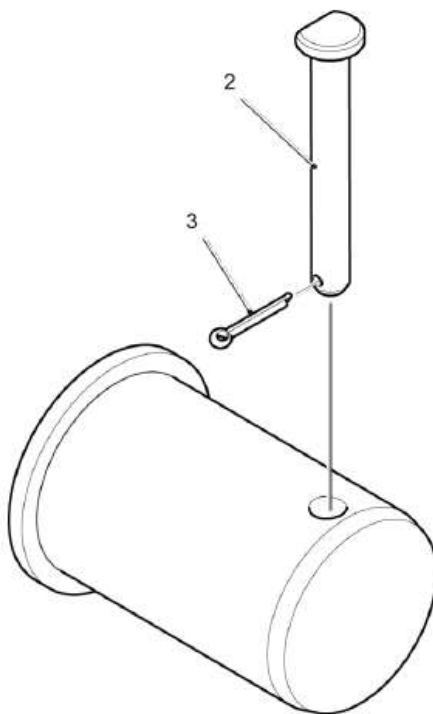
**BOOM / ADAPTOR OUTER PINASSY (710MP02195)**



BEML PART NO			DESCRIPTION	IL QTY	Scope of Supply
1	2	3			
710MP02195			<b>BOOM / ADAPTOR OUTER PIN</b>	1	To be supplied along with Plough Assembly LH with Assembled condition
	710 MP 12782		MOUNTING PIN (LONG)	1	
	710 MP 12799		CLEVIS PIN Ø10 X 80L	1	
			CLEVIS PIN TO ISO 2341B Ø10 X 80	1	
	710 MP 12774		SPLIT PIN - DIN 94 Ø3.2 X 20L	1	

**Scope of Supply:**

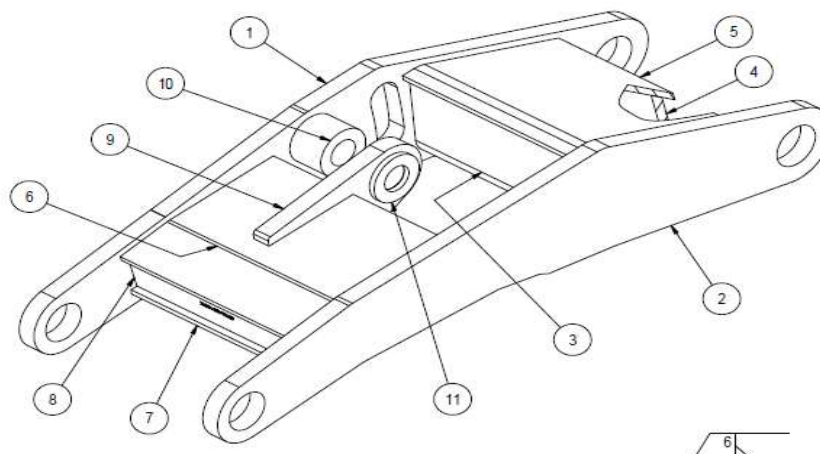
- 1) Complete Machining and Heat Treatment of MOUNTING PIN (LONG) as per drawing.
- 2) For Technical requirement please refer Appendix B of this document.

**Fig\_5**
**BOOM / ADAPTOR INNER PIN ASSY (710MP02187)**


BEML PART NO			DESCRIPTION	IL QTY	Scope of Supply
1	2	3			
710MP02187			<b>BOOM / ADAPTOR INNER PIN</b>	1	To be supplied along with Plough Assembly LH with Assembled condition
	710 MP 12822		MOUNTING PIN (SHORT)	1	
	710 MP 12799		CLEVIS PIN Ø10 X 80L	1	
			CLEVIS PIN TO ISO 2341B Ø10 X 80	1	
	710 MP 12774		SPLIT PIN - DIN 94 Ø3.2 X 20L	1	

**Scope of Supply**

- 1) Complete Machining and Heat Treatment of MOUNTING PIN (SHORT) as per drawing.
- 2) For Technical requirement please refer Appendix B of this document.

**Fig\_6**
**BOOM ASSY LH(710MP02162)**


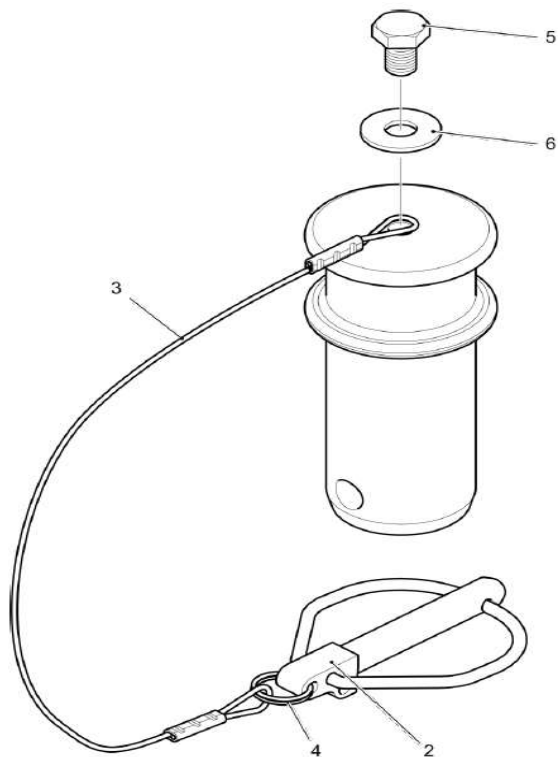
BEML PART NO			DESCRIPTION	IL QTY	Scope of Supply
1	2	3			
			<b>BOOM ASSY LH</b>	1	To be Supplied along with Plough Assembly LH with Assembled condition
	710 MP 02162		BOOM LH	1	
		710 MP 14953	SIDE PLATE INNER	1	
		710 MP 14961	SIDE PLATE OUTER	1	
		710 MP 14978	COVER TOP PLATE - FRONT	1	
		710 MP 14986	COVER PLATE	1	
		710 MP 14994	COVER TOP PLATE - BOTTOM	1	
		710 MP 15002	COVER PLATE BOTTOM - REAR	1	
		710 MP 15017	COVER TOP PLATE - REAR	1	
		710 MP 15025	COVER PLATE REAR	1	
		710 MP 15033	SUPPORT PLATE	1	
		710 MP 15041	BUSH	1	
		710 MP 15058	WASHER	2	

**Scope of Supply**

- 1) Complete Fabrication and Machining of Boom LH as per drawing.
- 2) For Technical requirement please refer Appendix A of this document.

**Fig\_7**

**TRAVEL LOCK PIN ASSY (710MP02202)**



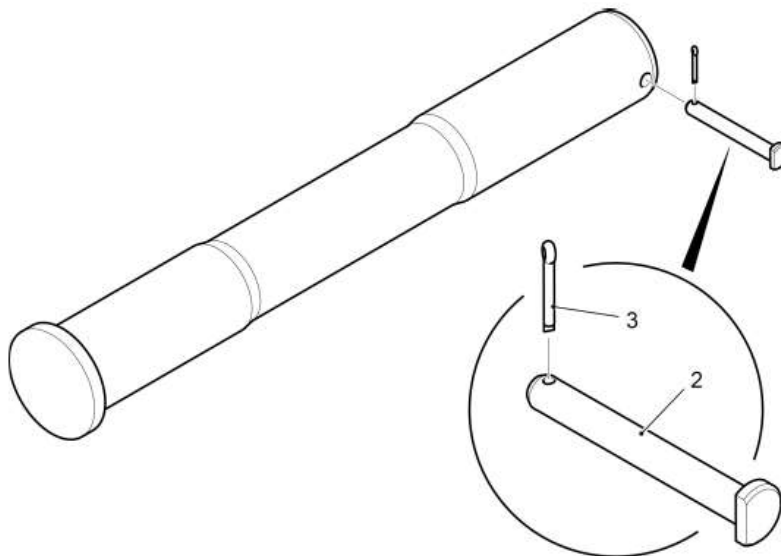
BEML PART NO		DESCRIPTION	IL QTY	Scope of Supply
1	2			
710MP02202		<b>TRAVEL LOCK PIN</b>	1	To be Supplied along with Plough Assembly LH with Assembled condition
	710 MP 12871	PIN - TRAVEL LOCK	1	
	710 MP 12888	PIN SAFETY LINCH	1	
	710 MP 03904	LANYARD - OVER CENTRE STOP	1	
	710 MP 12903	SPLIT KEY RING 16MM O/D	1	
	710 MP 12911	SCREW, HEX HD, M8 X 12, GR 8.8, ZP	1	
	710 MP 12928	WASHER, M8, 200 HV, ST, ZP	1	

**Scope of Supply:**

- 1) Complete Machining and Heat Treatment of PIN - TRAVEL LOCK as per drawing.
- 2) For Technical requirement please refer Appendix B of this document.

**Fig\_8**

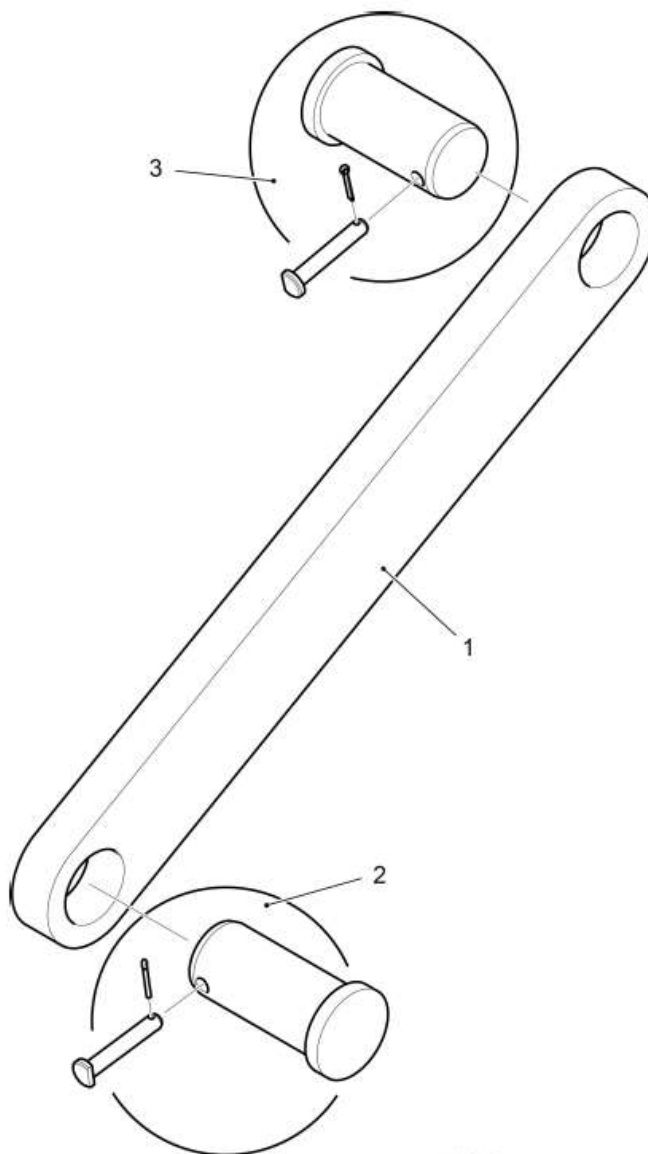
**BOOM / BLADE PIN ASSY(710MP02219)**



BEML PART NO			DESCRIPTION	IL QTY	Scope of Supply
1	2	3			
710MP02219			<b>BOOM / BLADE PIN</b>	1	To be Supplied along with Plough Assembly LH with Assembled condition
	710 MP 13195		PIN BOOM / BLADE	1	
	710 MP 12799		CLEVIS PIN Ø10 X 80L	1	
			CLEVIS PIN TO ISO 2341B Ø10 X 80	1	
	710 MP 12774		SPLIT PIN - DIN 94 Ø3.2 X 20L	1	

**Scope of Supply:**

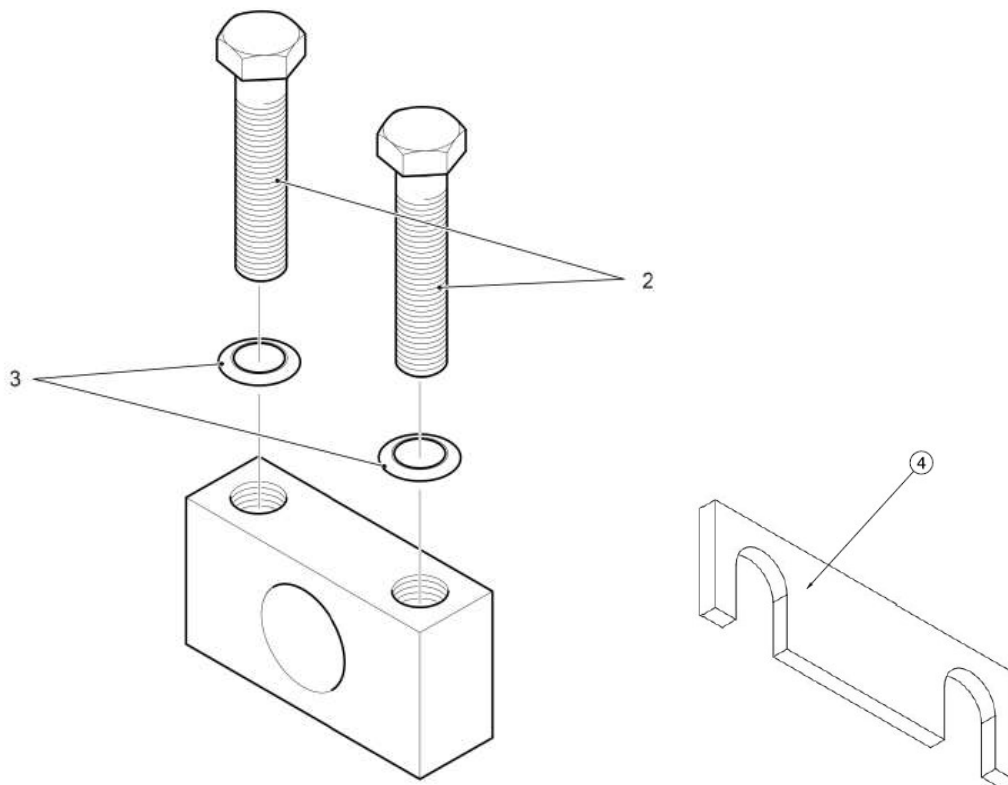
- 1) Complete Machining and Heat Treatment of PIN BOOM / BLADE as per drawing.
- 2) For Technical requirement please refer Appendix B of this document.

**Fig\_9****TOP LINK ASSY (710MP02227)**

BEML PART NO				DESCRIPTION	IL QTY	Scope of Supply
1	2	3	4			
710MP02227				TOP LINK	1	To be supplied along with Plough Assembly LH with Assembled condition
	710 MP 13235			TOP LINK	1	
	710 MP 03945			TOP LINK PIN LOWER ASSY	1	
		710 MP 13251		PIN - TOP LINK LOWER	1	
		710 MP 13268		CLEVIS PIN Ø10 X 60L	1	
				CLEVIS PIN TO ISO 2341B Ø10 X 60	1	
		710 MP 12774		SPLIT PIN - DIN 94 Ø3.2 X 20L	1	
	710 MP 03953			TOP LINK PIN UPPER ASSY	1	
		710 MP 13292		PIN - TOP LINK UPPER	1	
		710 MP 13268		CLEVIS PIN Ø10 X 60L	1	
				CLEVIS PIN TO ISO 2341B Ø10 X 60	1	
		710 MP 12774		SPLIT PIN - DIN 94 Ø3.2 X 20L	1	

#### Scope of Supply:

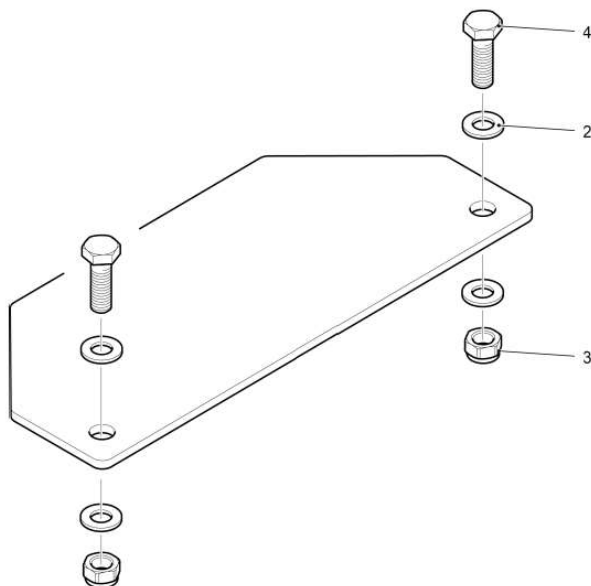
- 1) Complete Fabrication and Machining of Boom LH as per drawing.
- 2) For Technical requirement please refer Appendix A of this document
- 3) Complete Machining and Heat Treatment of PIN as per drawing
- 4) For Technical requirement please refer Appendix B of this document

**Fig\_10**
**TRUNNION LIFT CYLINDER ASSY (710MP02251)**


BEML PART NO		DESCRIPTION	IL QTY	Scope of Supply
1	2			
710MP02251		<b>TRUNNION LIFT CYLINDER</b>	2	To be Supplied along with Plough Assembly LH with Assembled condition
	710 MP 13405	TRUNNION BLOCK	1	
	710 MP 13413	BOLT, HEX HD, M20 X 100, GR 8.8, ZP	2	
	710 MP 13421	M20 SCHNORR SAFETY WASHER	2	
	710 MP 13438	SPACER	1	

**Scope of Supply:**

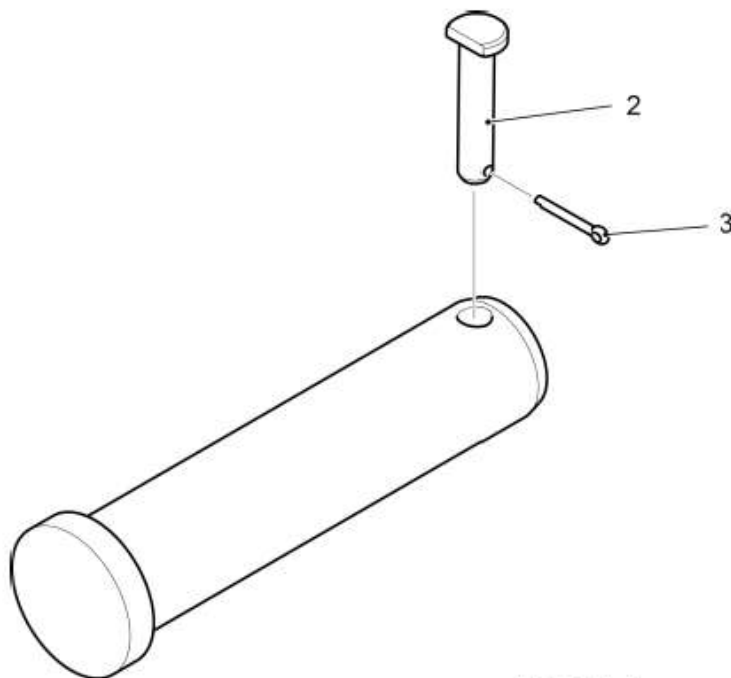
- 1) Complete Fabrication and Machining of TRUNNION BLOCK as per drawing.
- 2) For Technical requirement please refer Appendix A of this document

**Fig\_11**
**HOSE GUARD ASSY (710MP02268)**


BEML PART NO		DESCRIPTION	IL QTY	Scope of Supply
1	2			
710MP02268		<b>HOSE GUARD</b>	1	To be Supplied along with Plough Assembly LH with Assembled condition
	710 MP 13446	GUARD	1	
	710 MP 12969	WASHER, M8, 200 HV, ST, ZP	4	
	710 MP 12977	NUT, NYLOC, M8, GR 8, ZP	2	
	710 MP 13479	SCREW, HEX HD, M8 X 25, GR 8.8, ZP	2	

**Scope of Supply:**

- 1) Complete Fabrication and Machining of TRUNNION BLOCK as per drawing.
- 2) For Technical requirement please refer Appendix A of this document

**Fig\_12**
**LIFT CYLINDER / BOOM PIN ASSY (710MP02276)**


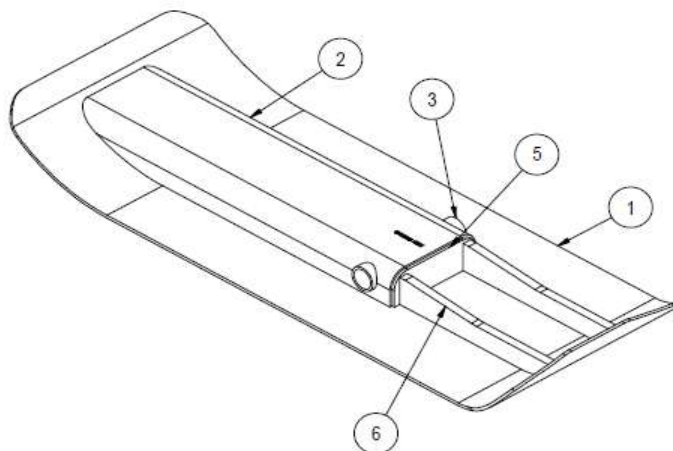
BEML PART NO			DESCRIPTION	IL QTY	Scope of Supply
1	2	3			
710MP02276			LIFT CYLINDER / BOOM PIN	1	To be Supplied along with Plough Assembly LH with Assembled condition
	710 MP 13487		PIN - LIFT CYLINDER / BOOM	1	
	710 MP 13495		CLEVIS PIN Ø10 X 50L	1	
			CLEVIS PIN TO ISO 2341B Ø10 X 50	1	
	710 MP 12774		SPLIT PIN - DIN 94 Ø3.2 X 20L	1	

**Scope of Supply –**

- 1) Complete Machining and Heat Treatment of PIN BOOM / BLADE as per drawing.
- 2) For Technical requirement please refer Appendix B of this document.

**Fig\_13**

**SKID ASSEMBLY (710MP02284)**



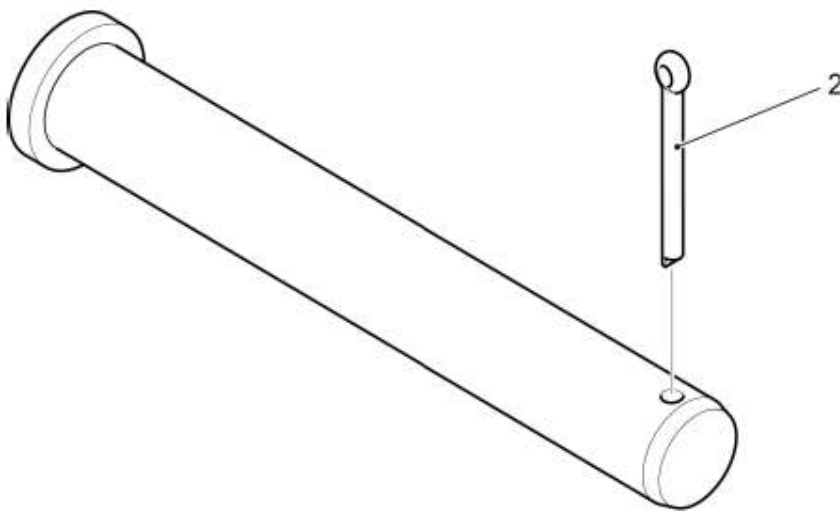
BEML PART NO			DESCRIPTION	IL QTY	Scope of Supply
1	2	3			
710MP02284			<b>SKID ASSEMBLY</b>	1	To be Supplied along with Plough Assembly LH with Assembled condition
	710 MP 15066		PLATE 34 (5 mm)	1	
	710 MP 15074		PLATE 35 (5 mm)	1	
	710 MP 15082		WALL TUBE (Φ 42.4 x 4 mm)	1	
	710 MP 15099		PLATE 36 (5 mm)	1	
	710 MP 15106		PLATE 37 (15 mm)	2	

**Scope of Supply**

- 1) Complete Fabrication and Machining of TRUNNION BLOCK as per drawing.
- 2) For Technical requirement please refer Appendix A of this document

**Fig\_14**

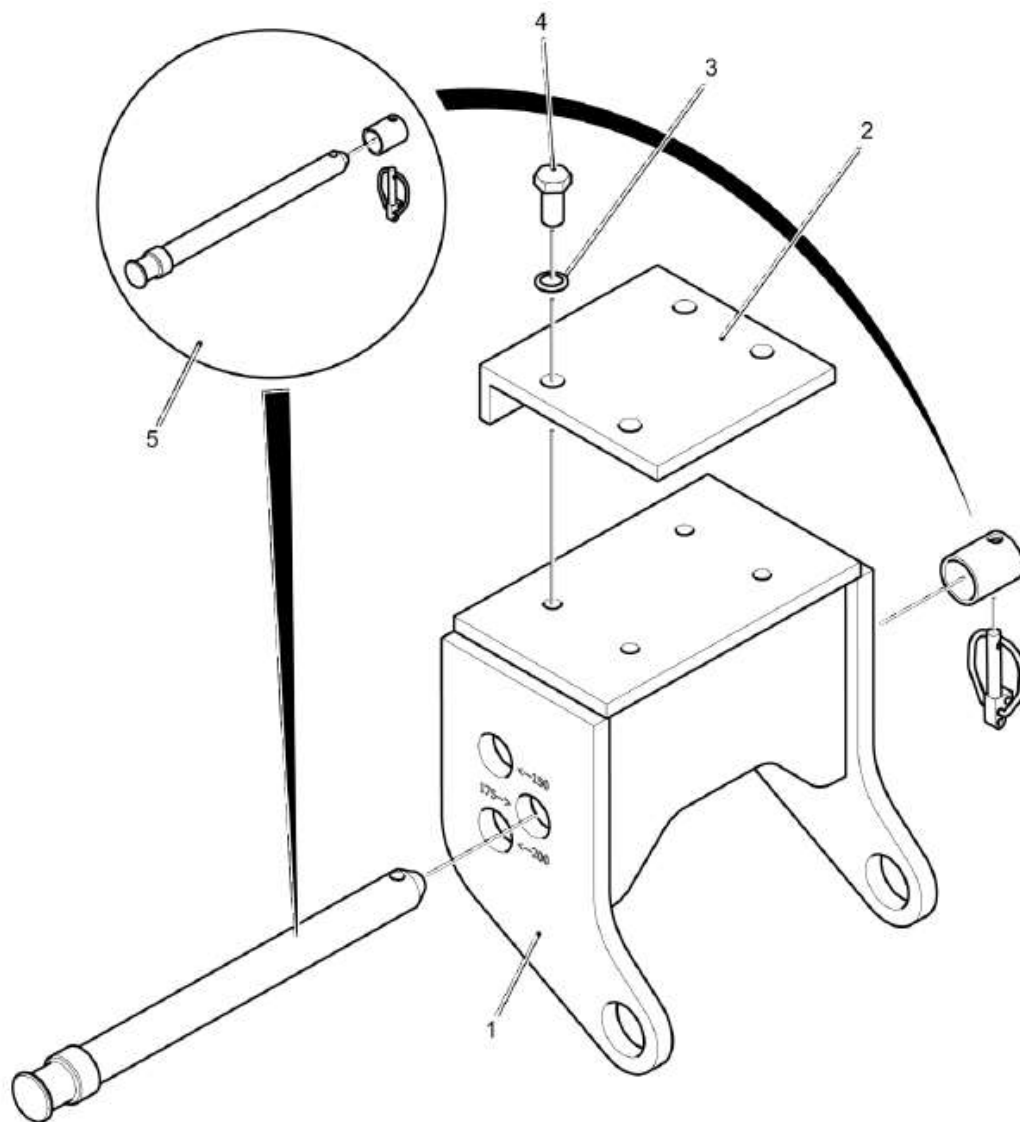
**SKID PINASSY (710 MP 02308)**



BEML PART NO		DESCRIPTION	IL QTY	Scope of Supply
1	2			
710 MP 02308		<b>SKID PIN ASSY</b>	1	To be Supplied along with Plough Assembly LH with Assembled condition
	710 MP 13535	SKID PIN	1	
	710 MP 13543	SPLIT PIN - DIN 94 Ø6.3 X 56L	1	

Scope of Supply:

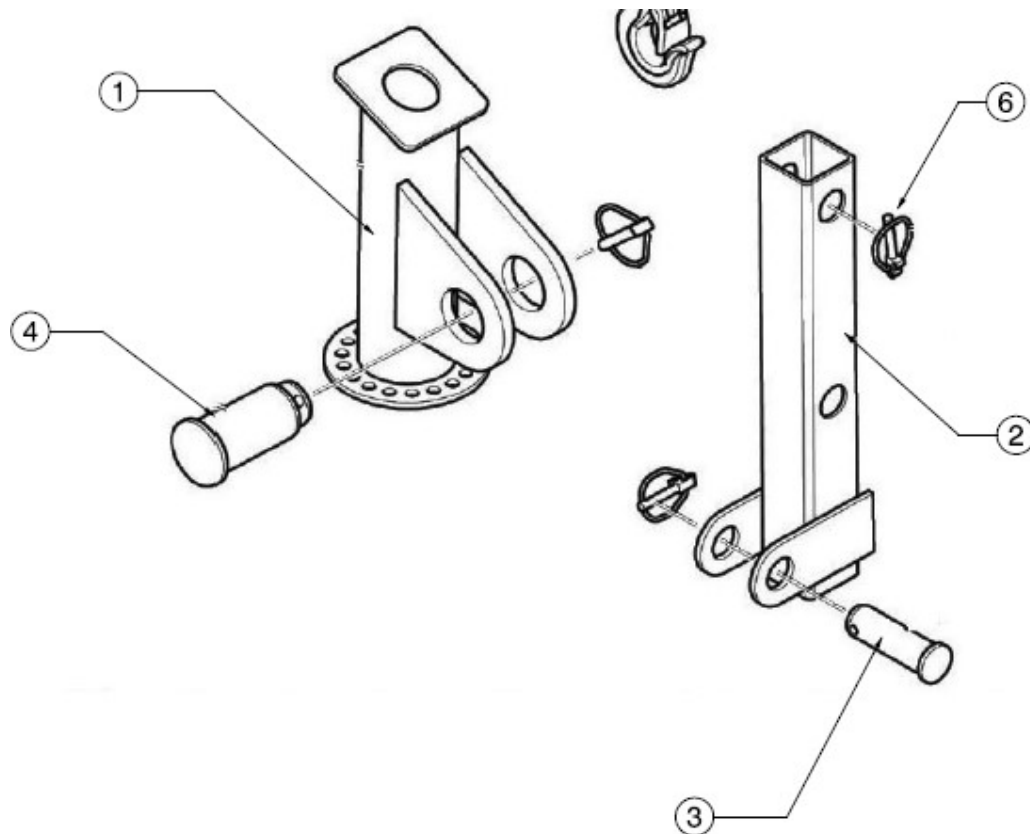
- 1) Complete Machining and Heat Treatment of PIN BOOM / BLADE as per drawing.
- 2) For Technical requirement please refer Appendix B of this document.

**Fig\_15****SKID ADJUSTER MAIN ASSY (710 MP 02316)**

BEML PART NO			DESCRIPTION	IL QTY	Scope of Supply
1	2	3			
710 MP 02316			SKID ADJUSTER ASSY	1	To be Supplied along with Plough Assembly LH with Assembled condition
	710 MP 13551		SKID ADJUSTER	1	
		710 MP 15114	PLATE 38 (10 mm)	1	
		710 MP 15122	PLATE 39 (12 mm)	2	
		710 MP 15139	PLATE 40 (10 mm)	1	
		710 MP 15147	PLATE 41 (10 mm)	1	
	710 MP 13568		STOP BLOCK	1	
	710 MP 13576		WASHER SERRATED M12	4	
	710 MP 13584		SCREW, HEX HD, M12 X 25, GR 8.8, ZP	4	
	710 MP 03978		SKID ADJUSTER PIN	1	
		710 MP 13608	SKID ADJUSTER PIN	1	
		710 MP 13616	PIN, SAFETY LINCH	1	
		710 MP 13624	SKID ADJUSTER COLLAR	1	

Scope of Supply:

- 1) Complete Fabrication and Machining of Boom LH as per drawing.
- 2) For Technical requirement please refer Appendix A of this document
- 3) Complete Machining and Heat Treatment of PIN as per drawing
- 4) For Technical requirement please refer Appendix B of this document.

**Fig\_16****FITTING EQUIPMENT ASSY LH (710 MP 02332)**

BEML PART NO				DESCRIPTION	IL QTY	Scope of Supply
1	2	3	4			
710 MP 02332				FITTING EQUIPMENT ASSY LH	1	To be Supplied along with Plough Assembly LH in Loose condition Packed in Wooden Box (Except Tractel Lever Hoist)
	710 MP 03986			CRANE (BUSHED) ASSY	1	
		710 MP 13632		CRANE FOOT ASSY	1	
			710 MP 15155	WALL TUBE (Φ82.5x12.5 mm)	1	
			710 MP 15163	PLATE 42 (6 mm)	1	
			710 MP 15171	PLATE 43 (6 mm)	1	
			710 MP 15188	PLATE 44 (12 mm)	2	
		710 MP 13649		BUSH	1	
		710 MP 13657		BUSH	1	
	710 MP 13665			JIB BASE ASSY	1	
		710 MP 15196		BLOCK -RHS (60x60x4 mm SEAMLESS BOX)	1	
		710 MP 15203		PLATE 45 (6mm)	2	
	710 MP 13673			CRANE PIN	1	
	710 MP 13681			MOUNTING PIN	1	
	710 MP 13698			TRACTEL LEVER HOIST	1	Not in Scope of Supply
	710 MP 13616			PIN, SAFETY LINCH	2	Include in Scope
	710 MP 12888			PIN SAFETY LINCH	1	Include in Scope

**Complete BOM of Plough Assembly LH (710MP02438)**

BEML PART NO					DESCRIPTION	IL QTY
1	2	3	4	5		
710 MP 02438					<b>PLOUGH ASSEMBLY LH</b>	1
	710MP02146				<b>VEHICLE ADAPTOR BRACKET ASSY (LH)</b>	1
		710 MP 12717			VEHICLE ADAPTOR BRACKET LH	1
			710 MP 14694		MOUNTING PLATE	1
			710 MP 14701		PLATE	1
			710 MP 14718		SUPPORT PLATE-1	1
			710 MP 14726		WASHER	2
			710 MP 14734		SUPPORT PLATE-2	1
			710 MP 14742		MOUNTING BRACKET-1	1
			710 MP 14759		MOUNTING BRACKET-2	1
			710 MP 14767		MOUNTING BRACKET-3	1
					MOUNTING FASTENERS	1
		710 MP 12725			WASHER, M24, 200 HV, ST, ZP ND0307	12
		710 MP 12733			SCREW, HEX HD, M24X1.5P X 70, GR 8.8, ZP	12
					<b>MOUNTING BRACKET ASSY (LH)</b>	1
		710 MP 03823			MOUNTING BRACKET LH	1
			710 MP 14775		INNER PLATE	1
			710 MP 14783		OUTER PLATE	1
			710 MP 14791		SUPPORT SECTION	2
			710 MP 14807		TOP LINK SUPPORT PLATE-1	1
			710 MP 14815		CYLINDER FIXING BLOCK	2
			710 MP 14823		CYLINDER PROTECTION PLATE	2
			710 MP 14831		TOP LINK SUPPORT PLATE-2	1
			710 MP 14848		BOTTOM PLATE	1
			710 MP		MOUNTING PIN PLATE-1	1

## PTS of Procurement of TWMP Fitment Kit

			14856			
			710 MP 14864		SUPPORT PLATE	1
			710 MP 14872		ADAPTOR BRACKET MOUNTING PLATE-1	1
			710 MP 14889		SUPPORT BOSS	1
			710 MP 14897		BOSS-1	2
			710 MP 14904		ADAPTOR BRACKET MOUNTING PLATE-2	1
			710 MP 14912		MOUNTING PIN PLATE-2	1
			710 MP 14929		MOUNTING PIN PLATE-3	1
			710 MP 14937		BOSS-2	2
			710 MP 14945		SPACER	1
	710 MP 03831				<b>MOUNTING PIN ASSY</b>	4
		710 MP 12758			MOUNTING PIN	1
		710 MP 12766			CLEVIS PIN TO ISO 2341B Ø10 X 100	1
		710 MP 12774			SPLIT PIN - DIN 94 Ø3.2 X 20L	1
	710MP02195				<b>BOOM / ADAPTOR OUTER PIN ASSY</b>	1
		710 MP 12782			MOUNTING PIN (LONG)	1
		710 MP 12799			CLEVIS PIN Ø10 X 80L	1
					CLEVIS PIN TO ISO 2341B Ø10 X 80	1
		710 MP 12774			SPLIT PIN - DIN 94 Ø3.2 X 20L	1
	710MP02187				<b>BOOM / ADAPTOR INNER PIN ASSY</b>	1
		710 MP 12822			MOUNTING PIN (SHORT)	1
		710 MP 12799			CLEVIS PIN Ø10 X 80L	1
					CLEVIS PIN TO ISO 2341B Ø10 X 80	1
		710 MP 12774			SPLIT PIN - DIN 94 Ø3.2 X 20L	1
					<b>BOOM ASSY LH</b>	1
		710 MP 02162			BOOM LH	1
			710 MP 14953		SIDE PLATE INNER	1

## PTS of Procurement of TWMP Fitment Kit

			710 MP 14961		SIDE PLATE OUTER	1
			710 MP 14978		COVER TOP PLATE - FRONT	1
			710 MP 14986		COVER PLATE	1
			710 MP 14994		COVER TOP PLATE - BOTTOM	1
			710 MP 15002		COVER PLATE BOTTOM - REAR	1
			710 MP 15017		COVER TOP PLATE - REAR	1
			710 MP 15025		COVER PLATE REAR	1
			710 MP 15033		SUPPORT PLATE	1
			710 MP 15041		BUSH	1
			710 MP 15058		WASHER	2
	710MP02202				<b>TRAVEL LOCK PIN ASSY</b>	1
		710 MP 12871			PIN - TRAVEL LOCK	1
		710 MP 12888			PIN SAFETY LINCH	1
		710 MP 03904			LANYARD - OVER CENTRE STOP	1
		710 MP 12903			SPLIT KEY RING 16MM O/D	1
		710 MP 12911			SCREW, HEX HD, M8 X 12, GR 8.8, ZP	1
		710 MP 12928			WASHER, M8, 200 HV, ST, ZP	1
	710MP02219				<b>BOOM / BLADE PIN ASSY</b>	1
		710 MP 13195			PIN BOOM / BLADE	1
		710 MP 12799			CLEVIS PIN Ø10 X 80L	1
					CLEVIS PIN TO ISO 2341B Ø10 X 80	1
		710 MP 12774			SPLIT PIN - DIN 94 Ø3.2 X 20L	1
	710MP02227				<b>TOP LINK ASSY</b>	1
		710 MP 13235			TOP LINK	1
		710 MP 03945			TOP LINK PIN LOWER ASSY	1
			710 MP 13251		PIN - TOP LINK LOWER	1
			710 MP 13268		CLEVIS PIN Ø10 X 60L	1
					CLEVIS PIN TO ISO 2341B Ø10 X 60	1

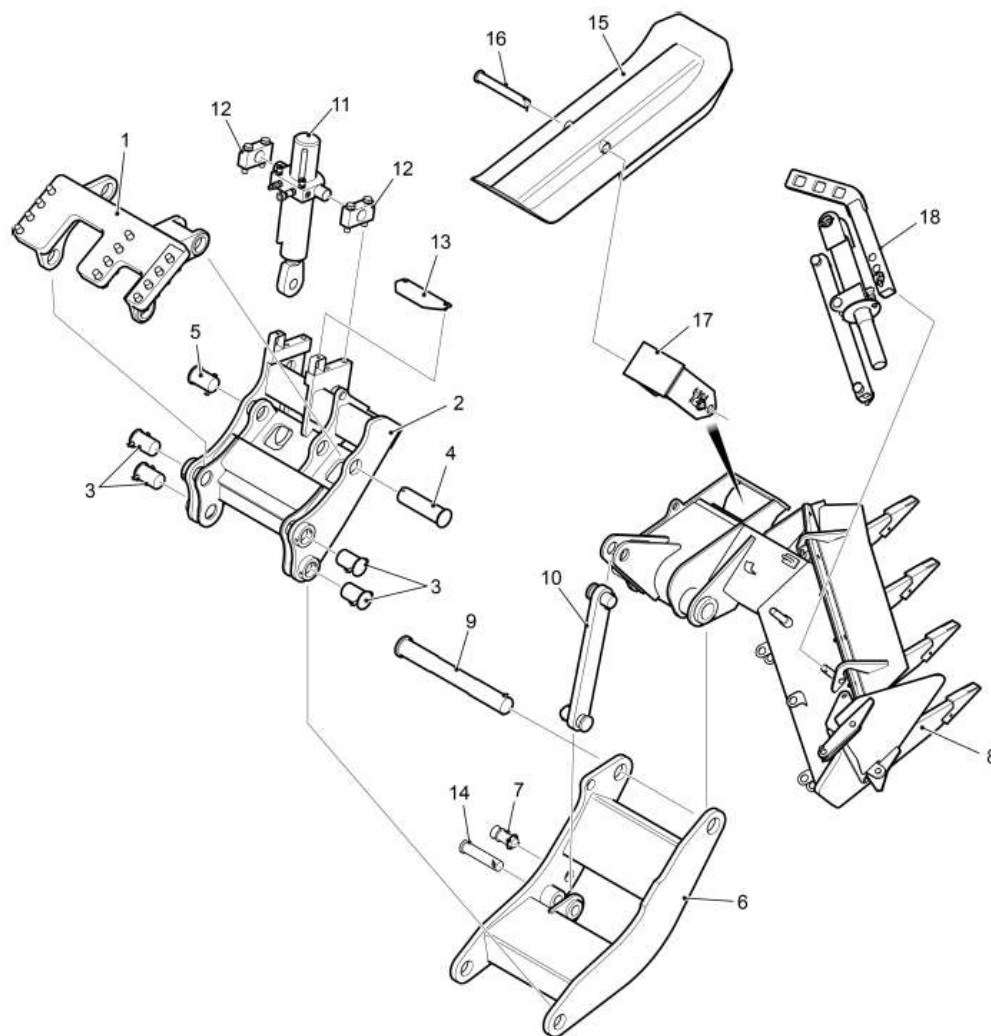
			710 MP 12774		SPLIT PIN - DIN 94 Ø3.2 X 20L	1
		710 MP 03953			TOP LINK PIN UPPER ASSY	1
			710 MP 13292		PIN - TOP LINK UPPER	1
			710 MP 13268		CLEVIS PIN Ø10 X 60L	1
				710 MP 13276	CLEVIS PIN TO ISO 2341B Ø10 X 60	1
			710 MP 12774		SPLIT PIN - DIN 94 Ø3.2 X 20L	1
	710MP02251				<b>TRUNNION LIFT CYLINDER ASSY</b>	2
		710 MP 13405			TRUNNION BLOCK	1
		710 MP 13413			BOLT, HEX HD, M20 X 100, GR 8.8, ZP	2
		710 MP 13421			M20 SCHNORR SAFETY WASHER	2
		710 MP 13438			SPACER	1
	710MP02268				<b>HOSE GUARD ASSY</b>	1
		710 MP 13446			GUARD	1
		710 MP 12969			WASHER, M8, 200 HV, ST, ZP	4
		710 MP 12977			NUT, NYLOC, M8, GR 8, ZP	2
		710 MP 13479			SCREW, HEX HD, M8 X 25, GR 8.8, ZP	2
	710MP02276				<b>LIFT CYLINDER / BOOM PIN ASSY</b>	1
		710 MP 13487			PIN - LIFT CYLINDER / BOOM	1
		710 MP 13495			CLEVIS PIN Ø10 X 50L	1
					CLEVIS PIN TO ISO 2341B Ø10 X 50	1
		710 MP 12774			SPLIT PIN - DIN 94 Ø3.2 X 20L	1
	710MP02284				<b>SKID ASSEMBLY</b>	1
		710 MP 13527			SKID LH	1
			710 MP 15066		PLATE 34 (5 mm)	1
			710 MP 15074		PLATE 35 (5 mm)	1
			710 MP 15082		WALL TUBE (Φ 42.4 x 4 mm)	1
			710 MP 15099		PLATE 36 (5 mm)	1
			710 MP		PLATE 37 (15 mm)	2

			15106			
	710 MP 02308				<b>SKID PIN ASSY</b>	1
		710 MP 13535			SKID PIN	1
		710 MP 13543			SPLIT PIN - DIN 94 Ø6.3 X 56L	1
	710 MP 02316				<b>SKID ADJUSTER MAIN ASSY</b>	1
		710 MP 13551			SKID ADJUSTER	1
			710 MP 15114		PLATE 38 (10 mm)	1
			710 MP 15122		PLATE 39 (12 mm)	2
			710 MP 15139		PLATE 40 (10 mm)	1
			710 MP 15147		PLATE 41 (10 mm)	1
		710 MP 13568			STOP BLOCK	1
		710 MP 13576			WASHER SERRATED M12	4
		710 MP 13584			SCREW, HEX HD, M12 X 25, GR 8.8, ZP	4
		710 MP 03978			SKID ADJUSTER PIN	1
			710 MP 13608		SKID ADJUSTER PIN	1
			710 MP 13616		PIN, SAFETY LINCH	1
			710 MP 13624		SKID ADJUSTER COLLAR	1
	710 MP 02332				<b>FITTING EQUIPMENT ASSY LH</b>	1
		710 MP 03986			CRANE (BUSHED) ASSY	1
			710 MP 13632		CRANE FOOT	1
				710 MP 15155	WALL TUBE (Ø82.5x12.5 mm)	1
				710 MP 15163	PLATE 42 (6 mm)	1
				710 MP 15171	PLATE 43 (6 mm)	1
				710 MP 15188	PLATE 44 (12 mm)	2
			710 MP 13649		BUSH	1
			710 MP 13657		BUSH	1
		710 MP 13665			JIB BASE	1

# PTS of Procurement of TWMP Fitment Kit

			710 MP 15196		BLOCK -RHS (60x60x4 mm SEAMLESS BOX)	1
			710 MP 15203		PLATE 45 (6mm)	2
		710 MP 13673			CRANE PIN	1
		710 MP 13681			MOUNTING PIN	1
		710 MP 13616			PIN, SAFETY LINCH	2
		710 MP 12888			PIN SAFETY LINCH	1

**Fig\_B Plough Assembly RH (710 MP 02413)**



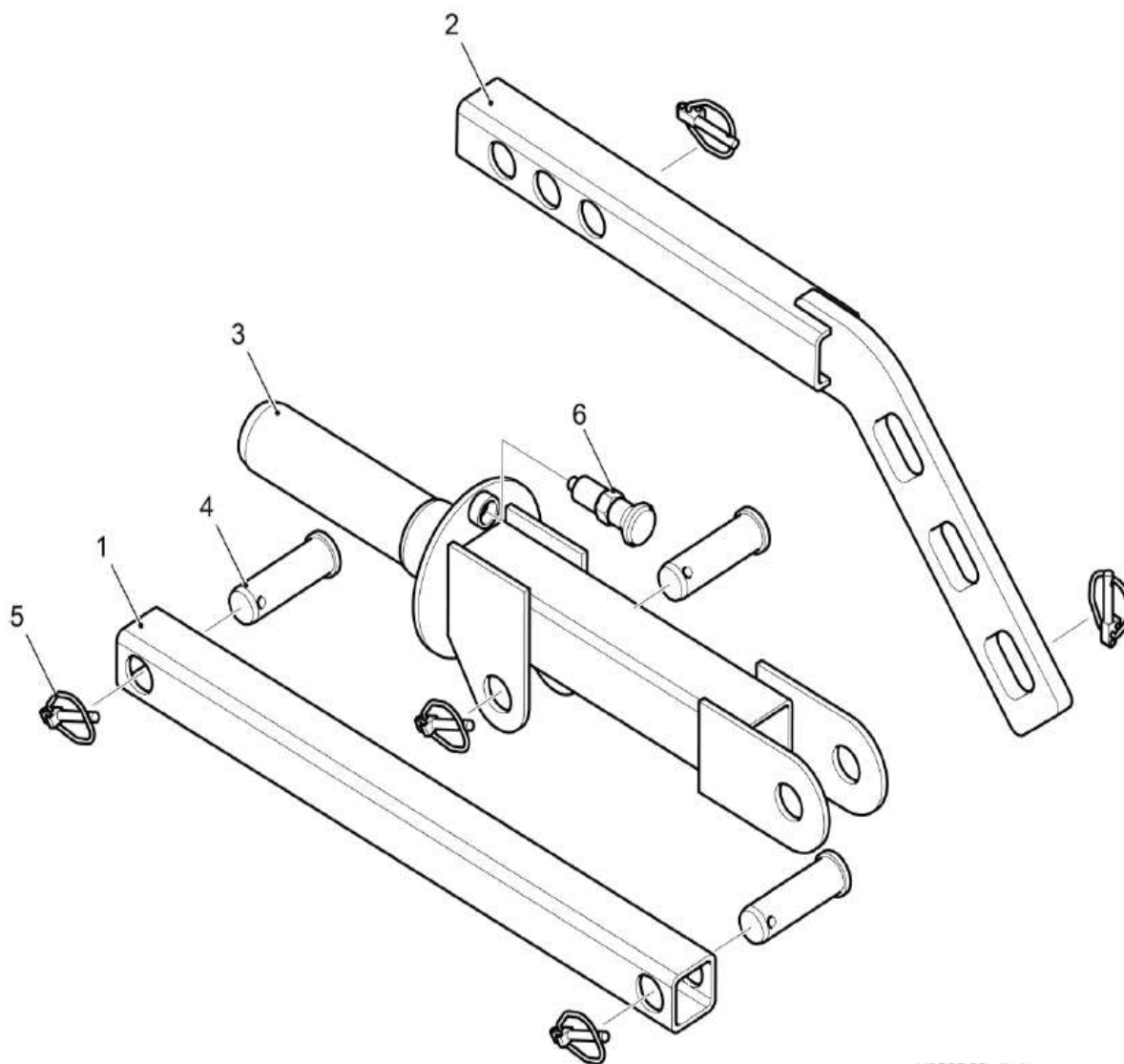
Supply condition – To be supplied in assembled Condition as shown in illustrated parts above

Supplier has to follow the same Assembly sequence as mentioned for Plough Assembly LH with reference to Fig\_1 to Fig\_15.

For Fitting Equipment ASSY RH (710 MP 04228) please refer Fig\_ 17

**Fig\_17**

**FITTING EQUIPMENT ASSY RH (710 MP 04228)**



KP3Q76Q A A

BEML PART NO			DESCRIPTION	IL QTY	Scope of Supply
1	2	3			
710 MP 04228			<b>FITTING EQUIPMENT, RH</b>	1	To be Supplied along with Plough Assembly RH in Loose condition Packed in Wooden Box
	710 MP 14564		SUPPORT	1	
	710 MP 14572		JIB	1	
		710 MP 15211	BLOCK- RHS (50x50x5 mm)	1	
		710 MP 15228	PLATE 46 (15 mm)	1	
	710 MP 14589		PIVOT	1	
		710 MP 15236	BLOCK-RHS (60x60X4 mm)	1	
		710 MP 15244	PLATE 46 (6mm)	2	
		710 MP 15252	PLATE 47 (6mm)	2	
		710 MP 15269	PLATE 48 (6mm)	1	
		710 MP 15277	WALL TUBE(Φ63.5x10 mm)	1	
		710 MP 15285	ROUND BAR Φ25	1	
	710 MP 13673		CRANE PIN	3	
	710 MP 13616		PIN, SAFETY LINCH	5	
	710 MP 14612		SPRING LOADED INDEX BOLT - LOCKING	1	

#### Scope of Supply

- 1) Complete Fabrication and Machining of TRUNNION BLOCK as per drawing.
- 2) For Technical requirement please refer Appendix A of this document

### Complete BOM of Plough Assembly RH (710 MP 02413)

BEML PART NO					DESCRIPTION	IL QTY
1	2	3	4	5		
710 MP 02413					<b>PLOUGH ASSEMBLY RH</b>	1
	710MP02154				<b>VEHICLE ADAPTOR BRACKET MAIN ASSY (RH)</b>	1
		710 MP 13721			VEHICLE ADAPTOR BRACKET RH	1
					MOUNTING FASTENERS	1
			710 MP 12725		WASHER, M24, 200 HV, ST, ZP	12
			710 MP 12733		SCREW, HEX HD, M24X1.5P X 70, GR 8.8, ZP	12
	710 MP 02421				<b>MOUNTING BRACKET ASSY (RH)</b>	1
	710 MP 03831				<b>MOUNTING PIN ASSY</b>	4
		710 MP 12758			MOUNTING PIN	1
		710 MP 12766			CLEVIS PIN TO ISO 2341B Ø10 X 100	1
		710 MP 12774			SPLIT PIN - DIN 94 Ø3.2 X 20L	1
	710MP02195				<b>BOOM / ADAPTOR OUTER PIN ASSY</b>	1
		710 MP 12782			MOUNTING PIN (LONG)	1
		710 MP 12799			CLEVIS PIN Ø10 X 80L	1
					CLEVIS PIN TO ISO 2341B Ø10 X 80	1
		710 MP 12774			SPLIT PIN - DIN 94 Ø3.2 X 20L	1
	710MP02187				<b>BOOM / ADAPTOR INNER PIN ASSY</b>	1
		710 MP 12822			MOUNTING PIN (SHORT)	1
		710 MP 12799			CLEVIS PIN Ø10 X 80L	1
					CLEVIS PIN TO ISO 2341B Ø10 X 80	1
		710 MP 12774			SPLIT PIN - DIN 94 Ø3.2 X 20L	1
					<b>BOOM ASSY RH</b>	1
		710 MP 02179			BOOM RH	1
	710MP02202				<b>TRAVEL LOCK PIN ASSY</b>	1
		710 MP 12871			PIN - TRAVEL LOCK	1
		710 MP 12888			PIN SAFETY LINCH	1
		710 MP 03904			LANYARD - OVER CENTRE STOP	1

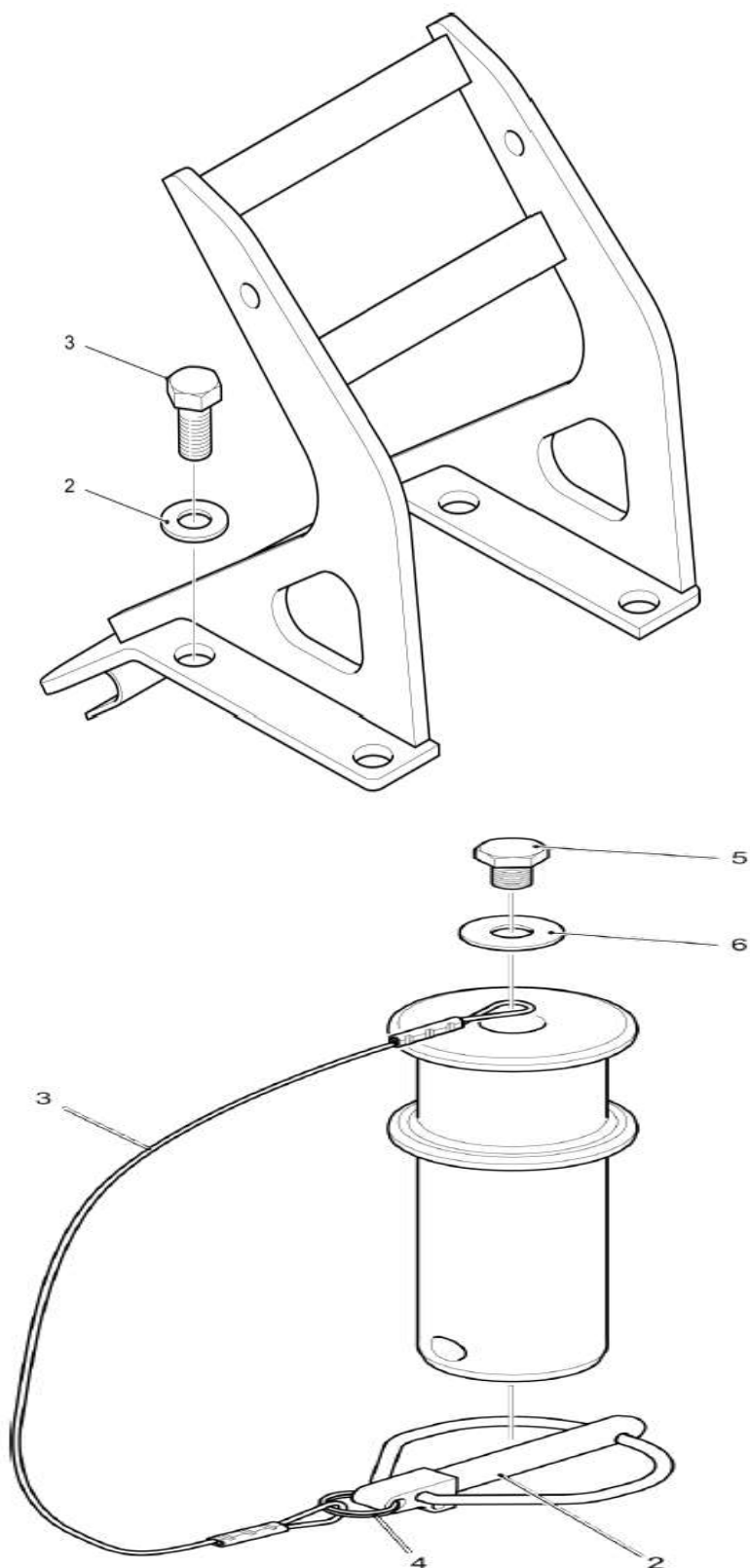
		710 MP 12903			SPLIT KEY RING 16MM O/D	1
		710 MP 12911			SCREW, HEX HD, M8 X 12, GR 8.8, ZP	1
		710 MP 12928			WASHER, M8, 200 HV, ST, ZP	1
	710MP02219				<b>BOOM / BLADE PIN ASSY</b>	1
		710 MP 13195			PIN BOOM / BLADE	1
		710 MP 12799			CLEVIS PIN Ø10 X 80L	1
					CLEVIS PIN TO ISO 2341B Ø10 X 80	1
		710 MP 12774			SPLIT PIN DIN 94 Ø3.2 X 20L	1
	710MP02227				<b>TOP LINK ASSY</b>	1
		710 MP 13235			TOP LINK	1
		710 MP 03945			TOP LINK PIN LOWER ASSY	1
			710 MP 13251		PIN TOP LINK LOWER	1
			710 MP 13268		CLEVIS PIN Ø10 X 60L	1
					CLEVIS PIN TO ISO 2341B Ø10 X 60	1
			710 MP 12774		SPLIT PIN DIN 94 Ø3.2 X 20L	1
		710 MP 03953			TOP LINK PIN UPPER ASSY	1
			710 MP 13292		PIN TOP LINK UPPER	1
			710 MP 13268		CLEVIS PIN Ø10 X 60L CM11423 BEML B	1
					CLEVIS PIN TO ISO 2341B Ø10 X 60 ND39577 BEML_DS_DS	1
			710 MP 12774		SPLIT PIN DIN 94 Ø3.2 X 20L	1
	710MP02251				<b>TRUNNION LIFT CYLINDER ASSY</b>	2
		710 MP 13405			TRUNNION BLOCK	1
		710 MP 13413			BOLT, HEX HD, M20 X 100, GR 8.8, ZP	2
		710 MP 13421			M20 SCHNORR SAFETY WASHER	2
		710 MP 13438			SPACER	1
	710MP02268				<b>HOSE GUARD ASSY</b>	1
		710 MP 13446			GUARD	1
		710 MP 12969			WASHER, M8, 200 HV, ST, ZP	4
		710 MP 12977			NUT, NYLOC, M8, GR 8, ZP	2

	710MP02276				<b>LIFT CYLINDER / BOOM PIN ASSY</b>	1
		710 MP 13487			PIN - LIFT CYLINDER / BOOM	1
		710 MP 13495			CLEVIS PIN Ø10 X 50L	1
					CLEVIS PIN TO ISO 2341B Ø10 X 50	1
		710 MP 12774			SPLIT PIN - DIN 94 Ø3.2 X 20L	1
	710MP02284				<b>SKID ASSEMBLY</b>	1
		710 MP 04196			SKID RH	1
	710MP02308				<b>SKID PIN ASSY</b>	1
		710 MP 13535			SKID PIN	1
		710 MP 13543			SPLIT PIN - DIN 94 Ø6.3 X 56L	1
	710MP02316				<b>SKID ADJUSTER MAIN ASSY</b>	1
		710 MP 13551			SKID ADJUSTER	1
		710 MP 13568			STOP BLOCK	1
		710 MP 13576			WASHER SERRATED M12	4
		710 MP 13584			SCREW, HEX HD, M12 X 25, GR 8.8, ZP	4
		710 MP 03978			<b>SKID ADJUSTER PIN ASSY</b>	1
			710 MP 13608		SKID ADJUSTER PIN	1
			710 MP 13616		PIN, SAFETY LINCH	1
			710 MP 13624		SKID ADJUSTER COLLAR	1
	710 MP 04228				<b>FITTING EQUIPMENT ASSY RH</b>	1
		710 MP 14564			SUPPORT	1
		710 MP 14572			JIB	1
			710 MP 15211		BLOCK- RHS (50x50x5 mm)	1
			710 MP 15228		PLATE 46 (15 mm)	1
		710 MP 14589			PIVOT	1
			710 MP 15236		BLOCK-RHS (60x60X4 mm)	1
			710 MP 15244		PLATE 46 (6mm)	2
			710 MP 15252		PLATE 47 (6mm)	2
			710 MP 15269		PLATE 48 (6mm)	1

## PTS of Procurement of TWMP Fitment Kit

		710 MP 15277		WALL TUBE(Φ63.5x10 mm)	1
		710 MP 15285		ROUND BAR Φ25	1
		710 MP 13673		CRANE PIN	3
		710 MP 13616		PIN, SAFETY LINCH	5
		710 MP 14612		SPRING LOADED INDEX BOLT - LOCKING	1

**Fig \_ C POWERPACK ASSEMBLY (710 HS 02007)**



BEML PART NO			DESCRIPTION	IL QTY
1	2	3		
710 HS 02007			<b>POWERPACK ASSEMBLY</b>	1
	710 HS 03044		<b>POWERPACK BRACKET</b>	1
		710 HS 03052	POWERPACK BRACKET	1
		710 MP 12725	WASHER, M24, 200 HV, ST, ZP	4
		710 HS 11509	SCREW, HEX HD, M24X1.5P X 50, GR 8.8, ZP	4
	710 HS 03052		<b>KOP - PIN POWERPACK</b>	2
		710 HS 11517	PIN - POWERPACK	1
		710 HS 11525	PIN, SAFETY LINCH	1
		710 MP 03904	LANYARD - OVER CENTRE STOP	1
		710 MP 12903	SPLIT KEY RING 16MM O/D	1
		710 MP 12911	SCREW, HEX HD, M8 X 12, GR 8.8, ZP	1
		710 MP 12928	WASHER, M8, 200 HV, ST, ZP	1

**NOTE:**

1. For consistency in dimensions, set up / Welding fixtures are to be used. The same are to be certified before use for manufacturing.

**Scope of Supply:** The TWMP Fitment Kit (710ZZB0062) Consists of

Sl. No	Part Number / Descriptions	Qty / Kit	Scope of Supply
1	710 MP 02438/ Plough Assembly LH	1 No	Manufacture and supply of Plough Assy LH to part number 710MP02438 as per Drawing & Standards excluding following assemblies a) Plough Blade Assembly LH b) Lift Cylinder Assy (710MP02276) c) Tractel Lever Hoist (710MP13698) d) Pin, Safety Linch (710MP13616) e) Pin Safety Linch (710MP12888) <b>Approximate weight of finished structure: 341 Kgs</b>
2	710 MP 02413/ Plough Assembly RH	1 No	Manufacture and supply of Plough Assy RH to part number 710 MP 02413 as per Drawing & Standards excluding following assemblies a) Plough Blade Assembly RH b) Lift Cylinder Assy (710MP02276) c) Tractel Lever Hoist (710MP13698) d) Pin, Safety Linch (710MP13616) e) Pin Safety Linch (710MP12888) <b>Approximate weight of finished structure: 341 Kgs</b>
3	710 HS 02007/ Power Pack Assembly	1 No	Manufacture and supply of Power Pack Assy to part number 710 HS 02007 as per Drawing & Standards excluding following assemblies a) Power pack Fastener Assy (710 PH 03134) b) 3 Leg Chain Sling (710 PH 03126) c) Lift Cylinder Hoses Assy (710 PH 03078) <b>Approximate weight of finished structure: 16 Kgs</b>