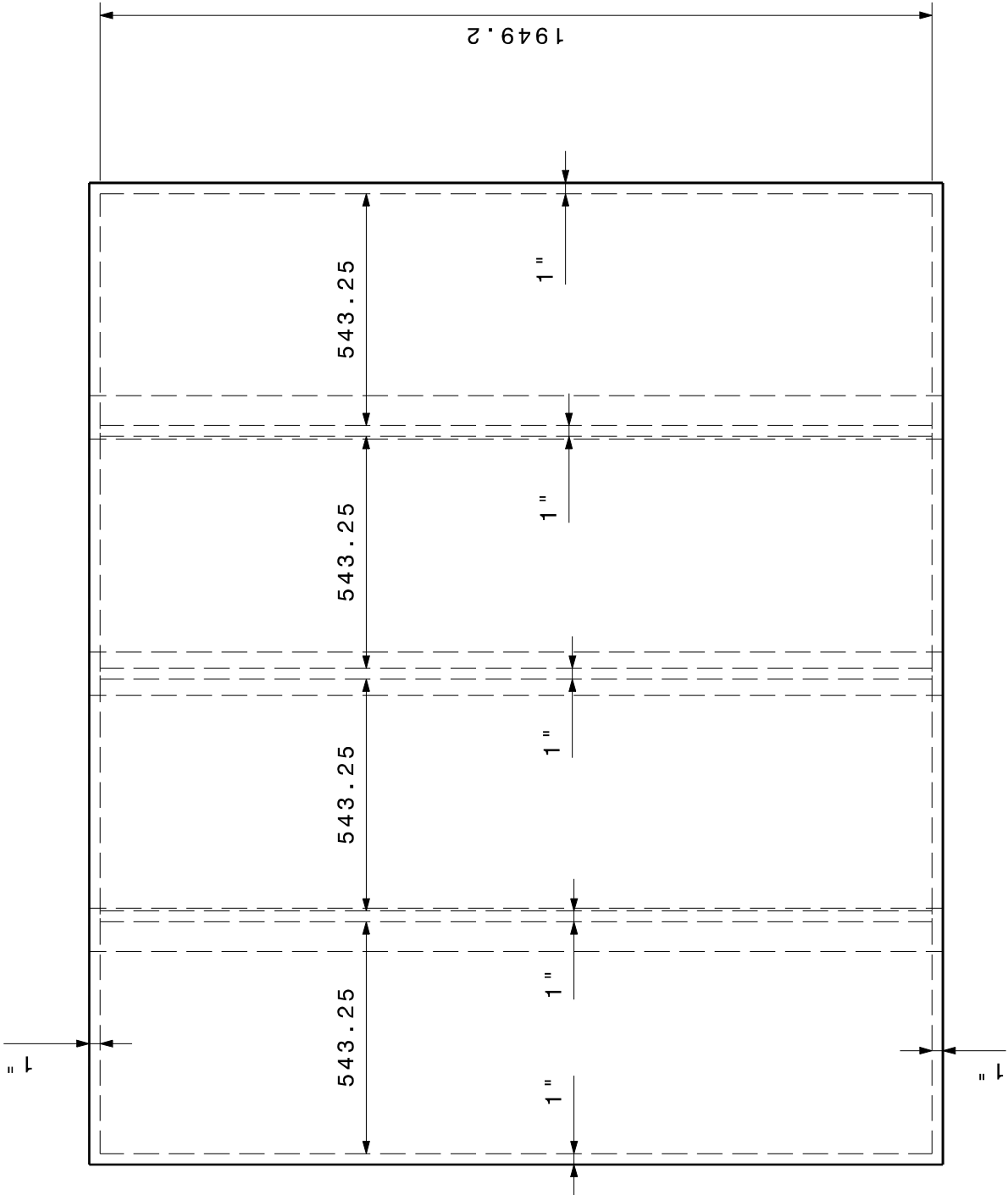
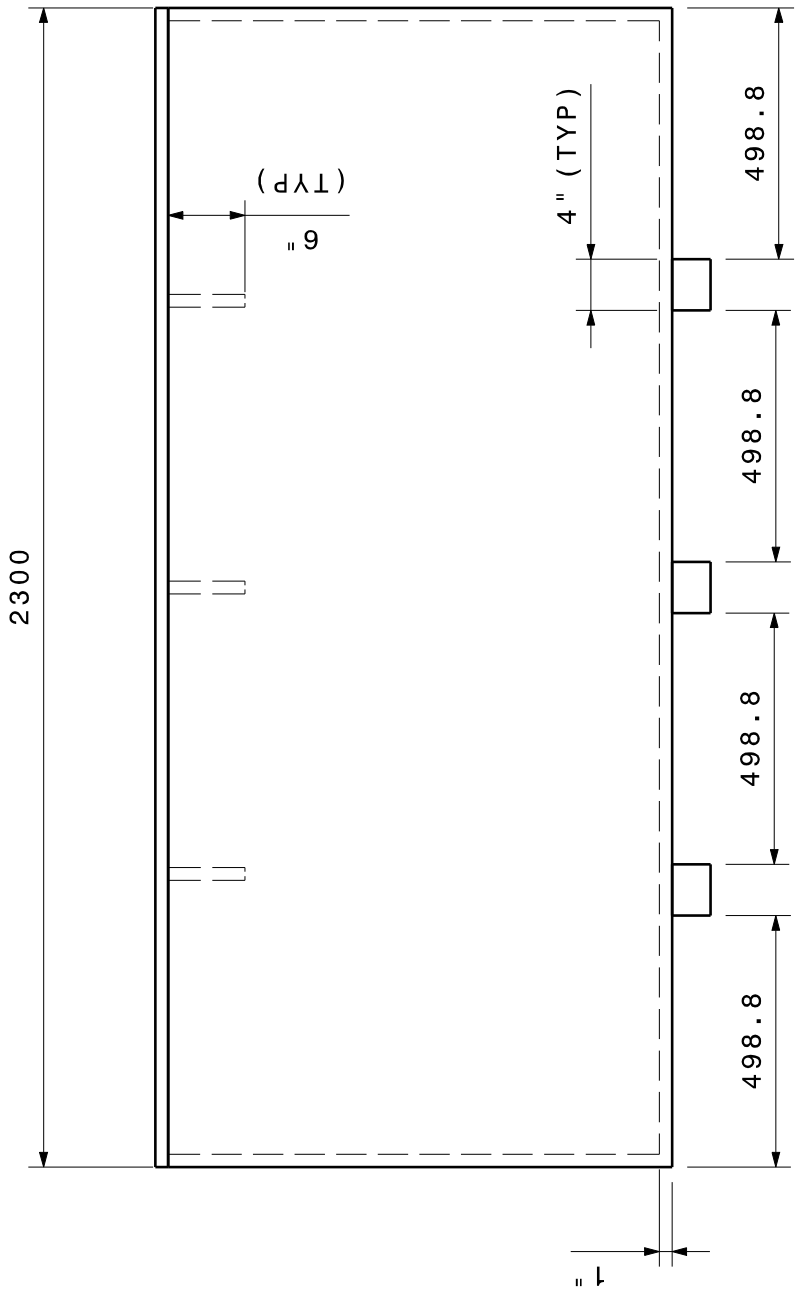
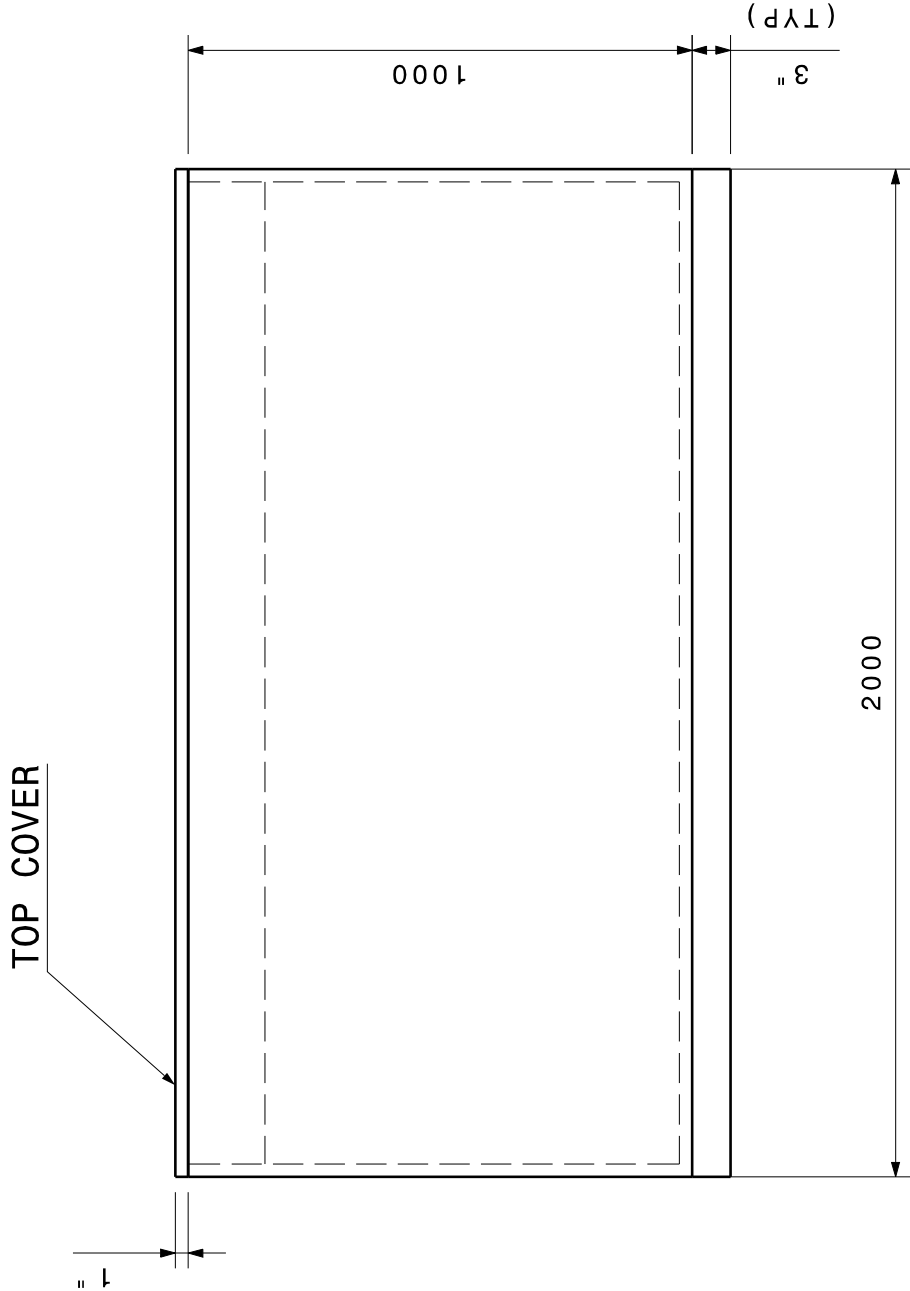
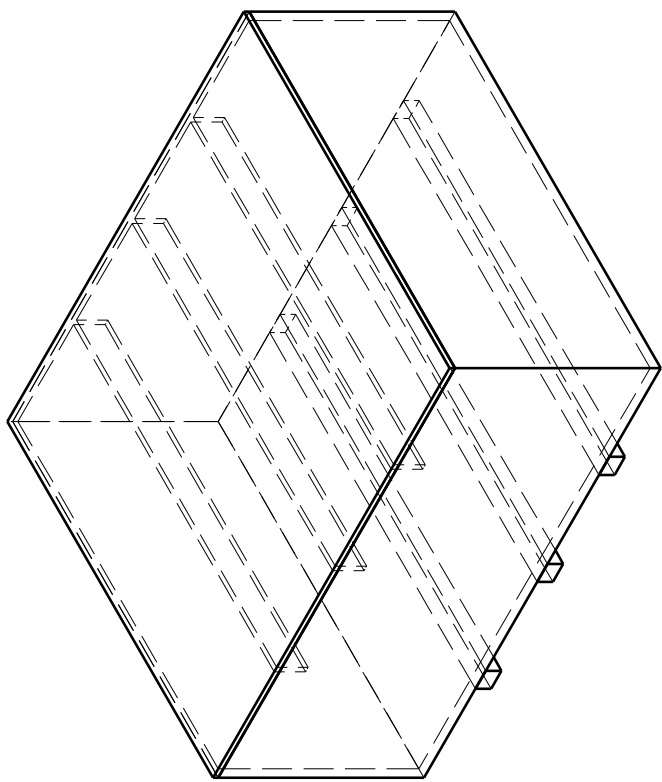


STATUS OF THE DESIGN	MACHINING DEVIATIONS FOR LINEAR DIMENSIONS																THE REST																
	ABOVE UP TO AND INCLUDING				6				30				120					315				1000				2000				4000			
	6				30				120				315					1000				2000				4000				-			
VALUE	±0.1				±0.2				±0.3				±0.5				±0.8				±1.2				±2				±3				



**NOTE:**

1. All dimensions are in 'mm', unless otherwise mentioned.
2. Jungle woods to be used for manufacturing of the boxes, wood thickness 1" for side wall, bottom and top cover.
3. Wooden Packing Box should have the capacity to withstand approximately 850 Kg's of Wt.
4. Suitable Hinges, Nails to be used to withstand the above mentioned weight.

[illegible]

Weight and size of each case:					
Length (cm)	Width (cm)	Height (cm)	Cubic Volume (m <sup>3</sup> )	Net Weight (kg)	Gross Weight (kg)
230	200	100	4.6	-	-