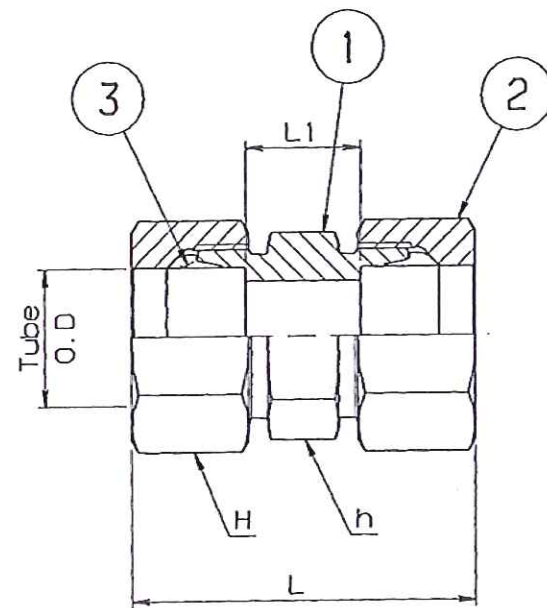


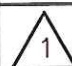


PART NO.	TUBE O.D. (mm)	WIDTH ACROSS FLAT		L	L1
		H	h		
909-60185	18	32	27	48	16



**UNCONTROLLED COPY**

3	2	909-60710	SLEEVE		SUS316							
2	2		NUT		SUS316							
1	1		BODY		SUS316							
SL No.	QTY	DRG. / STOCK No.	DESCRIPTION	SIZE	COMPANY/STD/IS/STD	Wt.Kg.						
			DETAIL PARTS	MATERIAL								
			PRODUCT	DMRC 8 CAR								
				SURFACE TREATMENT								
				APPROVED	<i>Start Design</i>							
				CHECKED	<i>R. P. Srinivas</i>							
				DRAWN	<i>W. P. Srinivas</i>							
1	ECN No.90900481 NOTE 3 ADDED	07.08.2015	SK Suresh SM Balaji MS Neer		REF DRG EE01829-401							
ALT	CHANGES / ECN No.	DATE	BY	CHKD	APP	QTY	NEXT ASSY	MODEL	SCALE NTS		SHEET 1 of 1	Wt (Kg)
 <b>B&amp;M LIMITED</b> R&D, BANGALORE COMPLEX BANGALORE 560 075			TITLE			DRG No.			ALT			
			STRAIGHT UNION			909-60185						

3. END FITTING SHALL BE OF FLARELESS DOUBLE COMPRESSION TYPE  
& CONFIRM TO SPECIFICATION: DIN2353 (ISO8434-1)  
- SHALL BE APPLIED FOR DIMENSIONS NOT SPECIFIED AT DRAWING

SURFACE ROUGHNESS		N12	N11	N10	N9	N8	N7	N6	N5	N4	N3	N2	N1
GRADE No.													
VALUE		50	25	12.5	6.3	3.2	1.6	0.8	0.4	0.2	0.1	0.05	0.025
SYMBOL													