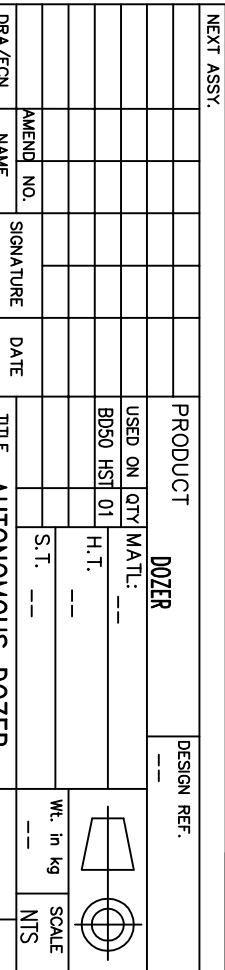


MACHINING DEVIATIONS FOR LINEAR DIMENSIONS									
BOX	-	6	30	120	315	1000	2000	4000	THE REST
IP 30 AND	6	3	120	315	1000	2000	4000	-	
INCLUDING									
VALUE	±0.1	±0.2	±0.3	±0.5	±0.8	±1.2	±2	±3	

MACHINING DEVIATIONS FOR LINEAR DIMENSIONS							THE REST
ABOVE HORIZONTAL VALUE	6	30	120	315	1000	2000	
-	6	30	120	315	1000	2000	4000
+0.1	+0.2	+0.3	+0.5	+0.8	+1.2	+2	+3

F. DOZER BLADE CONTROL: PILOT HYDRAULIC JOYSTICK IS PROVIDED FOR BLADE CONTROL. PILOT OPERATED HYDRAULICALLY CONTROLLED DOZER BLADE WILL BE UPGRADED TO ELECTRO HYDRAULIC CONTROLS THROUGH AN ELECTRICAL JOYSTICK & LOAD SENSING CYLINDERS IN DUE COURSE BY BEMIL



AE CAN J1939 2.0B IS THE COMMUNICATION STD TO BE FOLLOWED ACROSS  
UT RS232 SERIAL/USB COMMUNICATION PROVISION SHOULD BE AVAILABLE

### 3. REMOTE STARTING & REMOTE STOPPING COMMUNICATION AMONG CONTROLLERS

AE CAN J1939 2.0B IS THE COMMUNICATION STD TO BE FOLLOWED ACROSS  
UT RS232 SERIAL/USB COMMUNICATION PROVISION SHOULD BE AVAILABLE

## OPERATING VOLTAGES

THE SYSTEM/JUNT SHOULD WORK ON ALTERNATOR-BATTERY SUPPLY OF 9-32V AVAILABLE ON THE EQUIPMENT. IT SHOULD BE PROTECTED AGAINST OVER VOLTAGE, REVERSE VOLTAGE, TRANSIENT AND VOLTAGE FLUCTUATIONS AND ELECTRICAL NOISE CAUSED BY OPERATION OF INDUCTIVE LOAD LIKE MOTORS, SOLENOIDS , HORNS, WIPER, ETC.,

PROPER PROTECTIONS ARE TO BE TAKEN CARE IN UNIT TO AVOID MALFUNCTIONING OF THE SYSTEM DUE TO EMI/EMC INTERFERENCE.

### ADDITIONAL FEATURES:

PREVAILING TECHNOLOGIES SUCH AS TO PROVIDE PRECISE LOAD SCENARIO TO INTELLIGENT MACHINE CONTROL UNIT. INTELLIGENT MACHINE CONTROL UNIT WILL COMMAND/COMMUNICATE TO MACHINE CONTROL UNIT THROUGH MULTIPLE ANALOG/DIGITAL I/Os

### A. MAPPING & TRACKING

1. GPS TRACKING
2. GEO FENCING
3. OPERATING HOURS
4. OTHER SECURITY PARAMETERS (FUEL THEFT, THEFT PROTECTION)

## B. OPERATING REPORTS

1. MACHINE HOUR DETAILS
2. MACHINE UTILISATION REPORT
3. MACHINE PRODUCTION REPORT
4. WORK SHIFT REPORT
5. ENGINE STATUS REPORT

### C. SERVICE MANAGEMENT

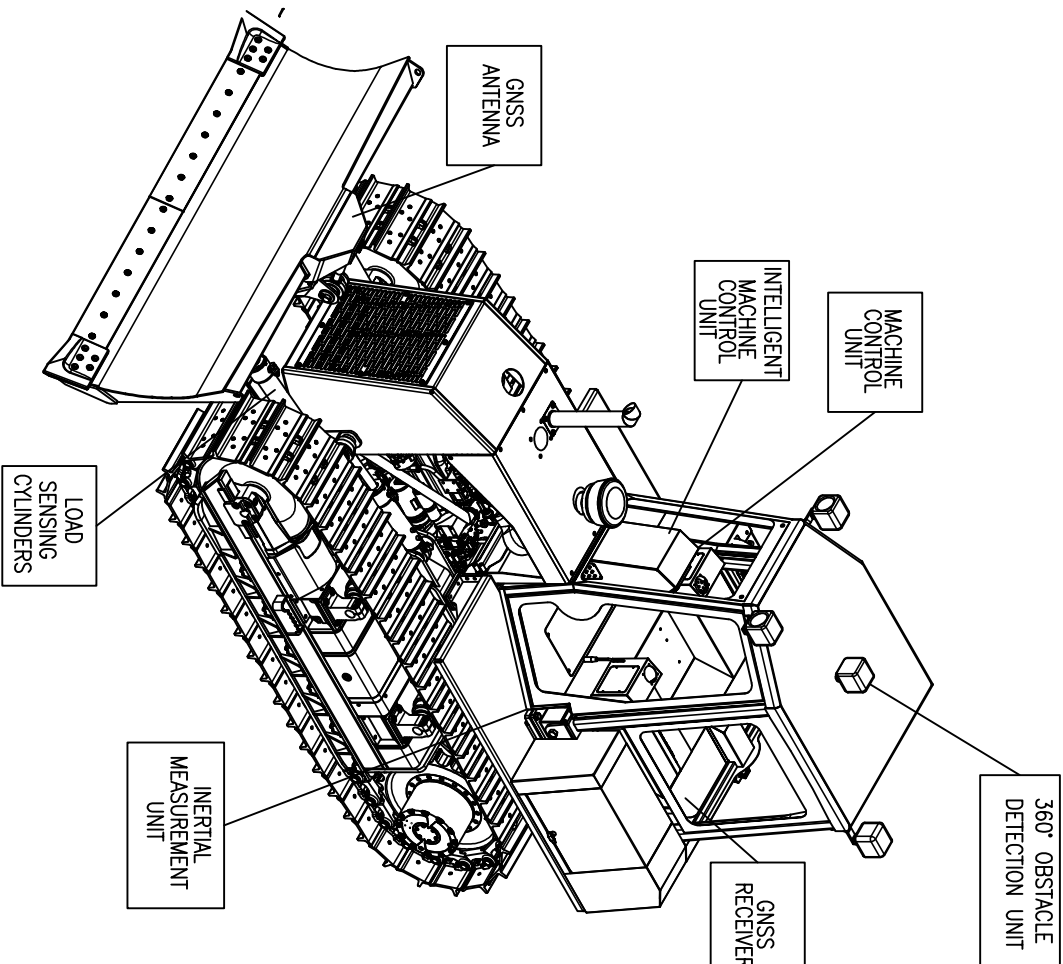
1. MACHINE HEALTH MONITORING & REMOTE DIAGNOSTICS
2. SERVICE SCHEDULING/PLANI
3. SERVICE REMINDER
4. MACHINE DATA BACKUP
5. CRITICAL MACHINE HEALTH ALERTS

IMPORTANT NOTES:

1. VENDOR TO INTEGRATE & VALIDATE ALL THE FUNCTIONS OF THE ABOVE SAID MODES MUTUALLY WITH BEML AT BEML, KGF ONLY.
2. TELE OPERATION AND AUTONOMOUS OPERATION TO BE PROVED OUT AND VALIDATION TO BE CARRIED OUT AT BEML, KGF ONLY. THE MACHINE WILL NOT BE SENT AND POSITIONED TO VENDOR PLACE FOR ENGINEERING, SOFTWARE DEVELOPMENT AND CALIBRATION.
3. AFTER SUCCESSFUL VALIDATION, SOFTWARES USED FOR DEVELOPMENT ARE TO BE KEPT ACTIVE AND VENDOR TO EXTEND THE SERVICE FOR SOFTWARE RELATED ISSUES TO BEML WHENEVER REQUIRED BY IT.
4. OPERATIONAL LATENCY/DELAYS OF SYSTEMS ON MACHINE IF ANY PERSISTS DURING DEVELOPMENT, VENDOR TO TAKE NECESSARY HARDWARE/SOFTWARE CORRECTION

GENERAL NOTES:

1. THE SIZE OF THE MACHINE CONTROL UNIT AND OTHER RELATED COMPONENTS SHALL BE AS COMPACT AS POSSIBLE
2. THE SCOPE OF THE DELIVERABLES LIKE SIM CARDS, APPLICATION SOFTWARE, SUBSCRIPTION CHARGES SHALL BE MUTUALLY DISCUSSED & DECIDED.
3. SUPPLIER SHALL IMPART TECHNICAL TRAINING TO BEML PERTAINING TO INSTALLATION, COMMISSIONING & PERIODIC MAINTENANCE OF EQUIPMENTS.
4. THE SUPPLIER SHALL WORK OUT FOR DATA CREATION REQUIRED FOR EQUIPMENT TRACKING & MANAGEMENT IN CONSULTATION WITH BEML.
5. SUPPLIER TO SPECIFY THE MINIMUM CONFIGURATION OF THE PC'S/ LAPTOP, INTERNET CONNECTIVITY & OS SYSTEM ETC.. FOR PROPER WORKING OF APPLICATION SOFTWARE.
6. SUPPLIER SHOULD PRODUCE OPERATION & MAINTENANCE MANUAL OF ALL SYSTEMS AND RELEVANT TEST CERTIFICATES

88