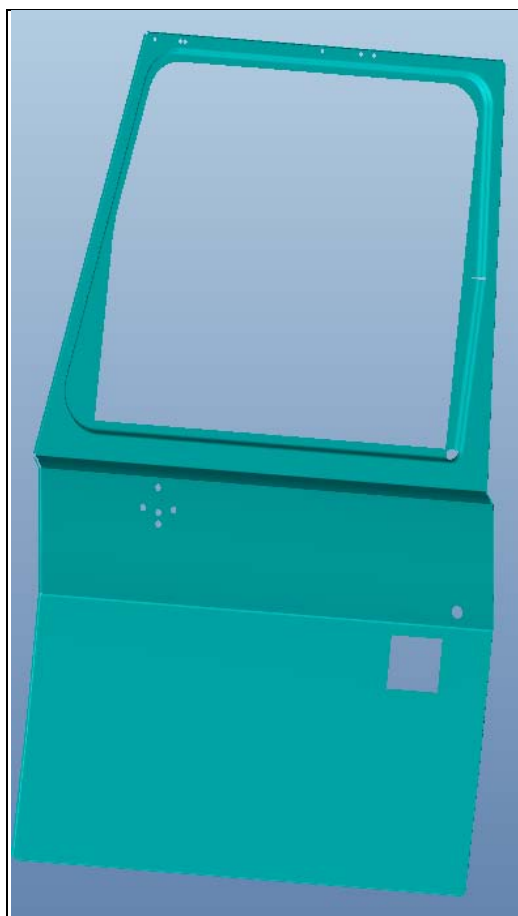


Cabin stamped parts details

1. T015308 - Front door outside sheet Right

Annexure-1



X = 882 mm

Y=1318 mm

Z = 93.5 mm

Weight = 5.85 Kg

Thickness = 1 mm

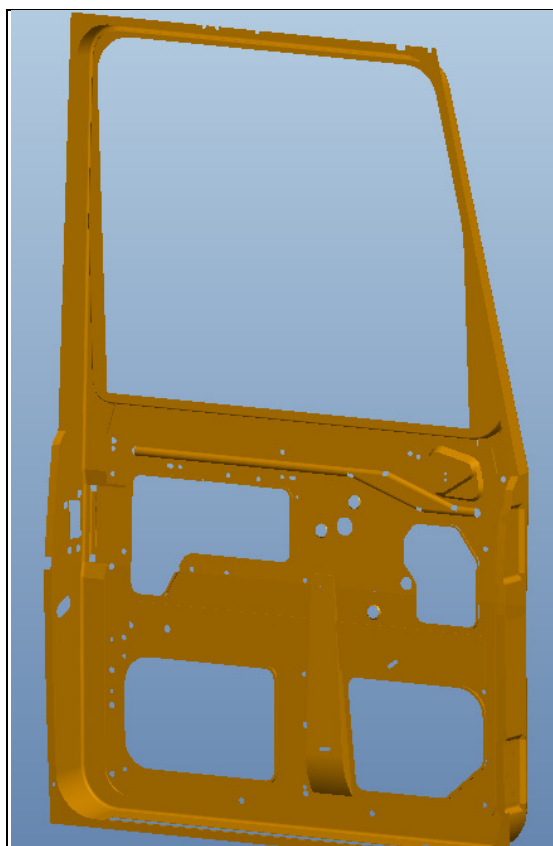
Material = 11300.21

CSN 42 5302.3

Equivalent IS std : IS : 513-94

Grade: DD (Hot rolled deep drawn sheet)

2. T015310 - Inside sheet door Right



X = 870 mm

Y=1308 mm

Z = 103 mm

Weight = 7.5 Kg

Thickness = 1 mm

Material = 11300.20

CSN 42 5302.2

Equivalent IS std : IS : 1079-94

Grade: EDD (Hot rolled Extra deep drawn sheet)

Cabin stamped parts details

3. T015307 - Front door outside sheet Left



X = 882 mm

Y=1318 mm

Z = 93.5 mm

Weight = 5.85 Kg

Thickness = 1 mm

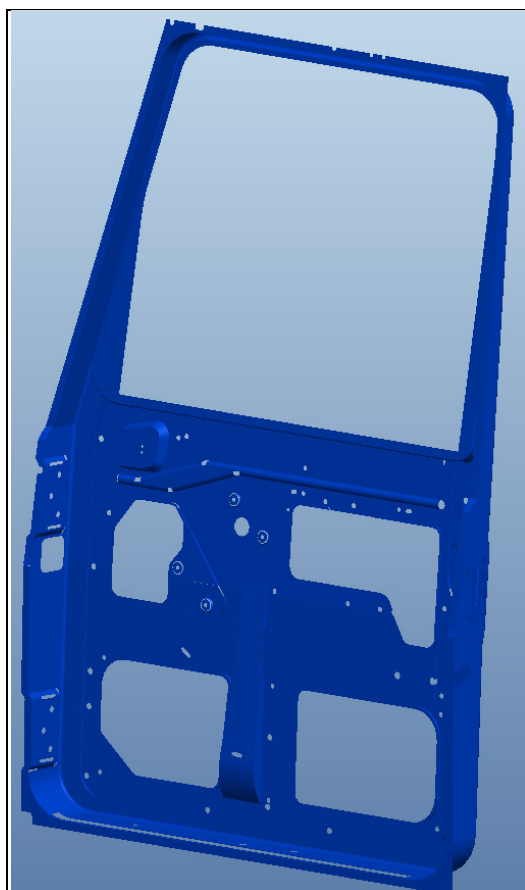
Material = 11300.21

CSN 42 5302.3

Equivalent IS std : IS : 513-94

Grade: DD (Hot rolled deep drawn sheet)

4. T015309 - Inside sheet door left



X = 870 mm

Y=1308 mm

Z = 103 mm

Weight = 7.5 Kg

Thickness = 1 mm

Material = 11300.20

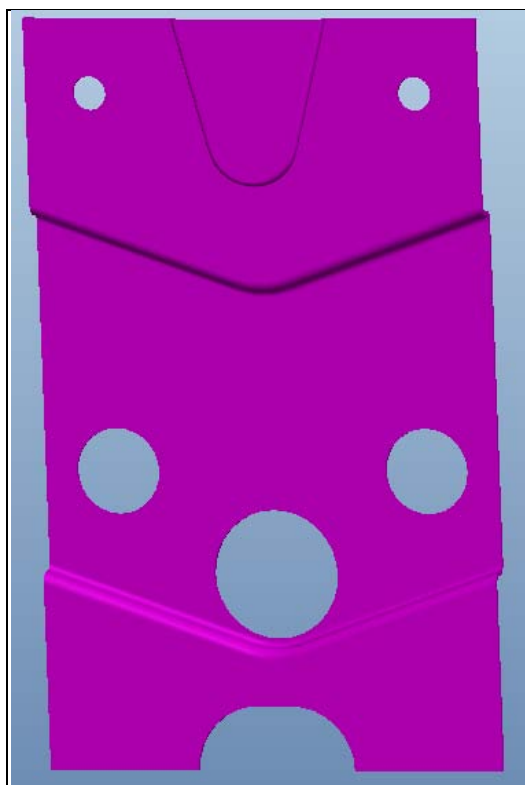
CSN 42 5302.2

Equivalent IS std : IS : 1079-94

Grade: EDD (Hot rolled Extra deep drawn sheet)

Cabin stamped parts details

5..442 9 0771 008 4 - Starter stiffener (Door) , **Qty-2**



X = 110 mm

Y=175 mm

Z = 8 mm

Weight = 0.547 Kg

Thickness = 1 mm

Material = 11300.20

CSN 42 5302.2

Equivalent IS std : IS : 1079-94

Grade: EDD (Hot rolled Extra deep drawn sheet)

6. 442 9 0778 010 4 - Glass leader part A (Door) , **Qty-2**



X = 1273 mm

Y=331 mm

Z = 18 mm

Weight = 0.610 Kg

Thickness = 1 mm

Material = 11305

CSN 42 6312.32

Equivalent IS std : IS : 513 -

86/94 Grade: EDD (Hot rolled Extra deep drawn sheet)

7. 442 9 0778 011 4 - Glass leader part B (Door) , **Qty-2**



X = 1272 mm

Y=472 mm

Z = 18 mm

Weight = 0.650 Kg

Thickness = 1 mm

Material = 11305

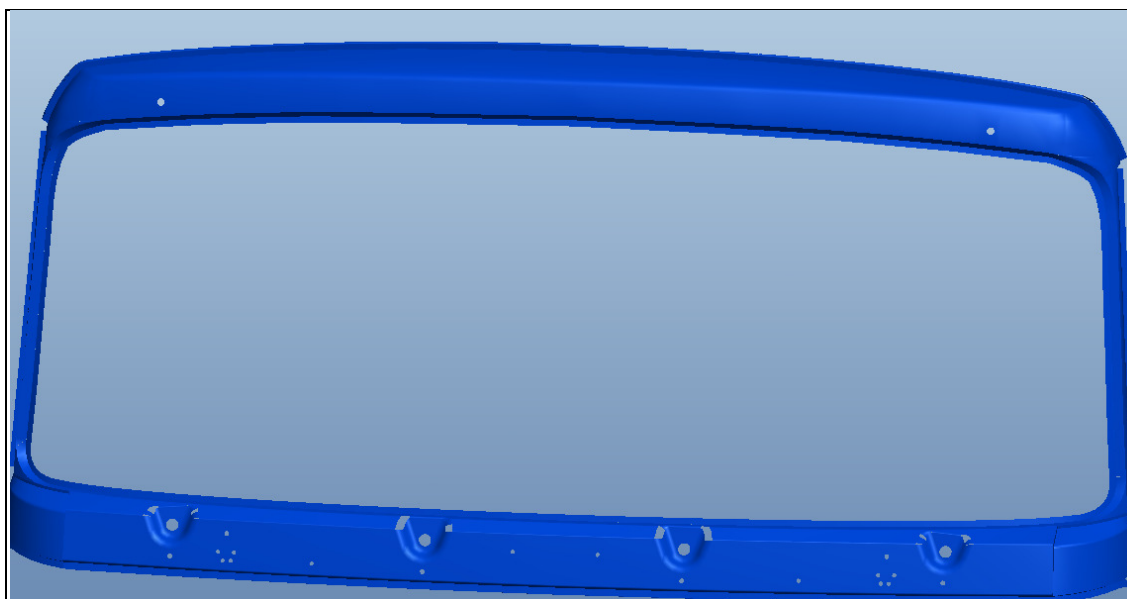
CSN 42 6312.32

Equivalent IS std : IS : 513 -

86/94 Grade: EDD (Hot rolled Extra deep drawn sheet)

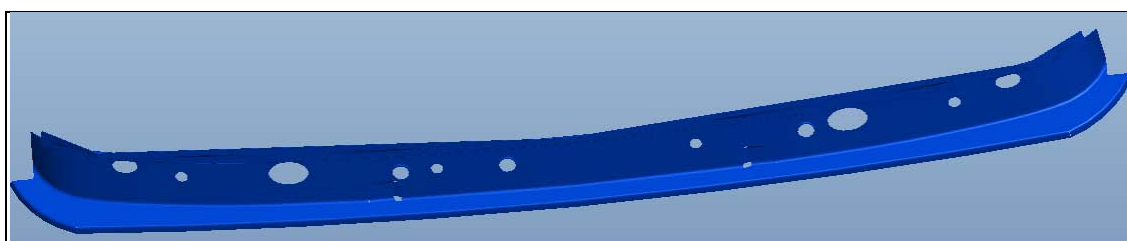
Cabin stamped parts details

8. 442 9 0262 001 4/442 9 0262 038 4 - Front window sheet outside



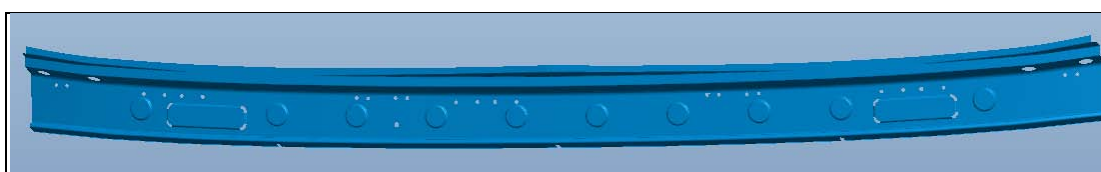
X = 2400 mm
Y=1164 mm
Z = 526.1mm
Weight = 9.3 Kg
Thickness = 1 mm
Material = -
CSN 42 6312.32

9. 442 9 0257 052 4 - Diagonal beam below window



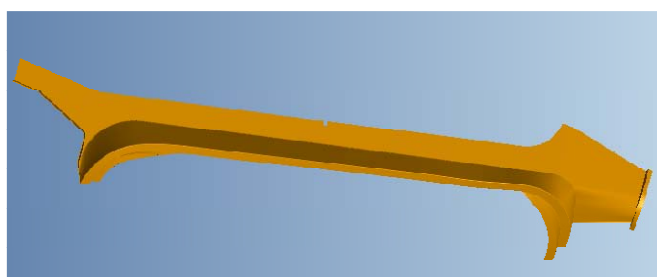
X = 2387 mm
Y=243 mm
Z = 154 mm
Weight = 8.34 Kg
Thickness = 2 mm
Material= 11305.21
CSN 42 6312.32

10.. T015370 - Diagonal beam over window



X = 1978 mm
Y=148 mm
Z = 68 mm
Weight = 3.5 Kg
Thickness = 1.3 mm
Material= 11305.21
CSN 42 6312.32

11. 442 9 0260 009 4 - Pillar plate of the right window. outside Right



X = 970 mm
Y=161 mm
Z = 165 mm
Weight = 2.12 Kg
Thickness = 1.3 mm
Material= 11305.21
CSN 42 6312.32

Equivalent IS std :
IS : 513 - 86/94
Grade: EDD (Cold
rolled Extra deep
drawn sheet)

Cabin stamped parts details

12. 442 9 0260 010 4 - Pillar plate of the right window. outside left.



X = 970 mm

Y=161 mm

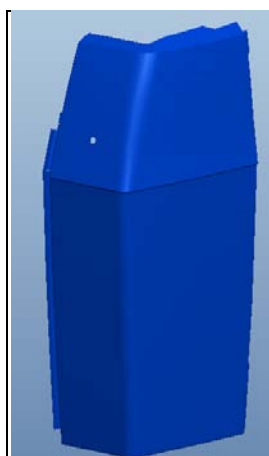
Z = 165 mm

Weight = 2.12 Kg

Thickness = 1.3 mm

Material= 11305.21
CSN 42 6312.32

13. 442 9 0257 071 4 - Outer front cover plate Left



X = 288 mm

Y= 646 mm

Z = 179 mm

Weight = 2.12 Kg

Thickness = 1 mm

Material= -
CSN 42 6312.32

14. 442 9 0257 091 4 - Outer front cover plate Right



X = 288 mm

Y= 646 mm

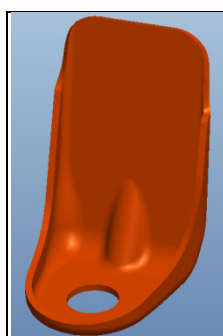
Z = 179 mm

Weight = 2.12 Kg

Thickness = 1 mm

Material= -
CSN 42 6312.32

15. 442 9 6974 022 4 - Head light console Right



X = 55 mm

Y= 85 mm

Z = 60 mm

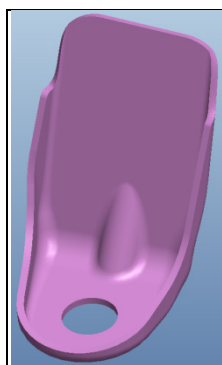
Weight = 0.2 Kg

Thickness = 2.5 mm

Material= 11300.20
CSN 42 5302.21

Cabin stamped parts details

16. 442 9 6974 023 4 - Head light console Left



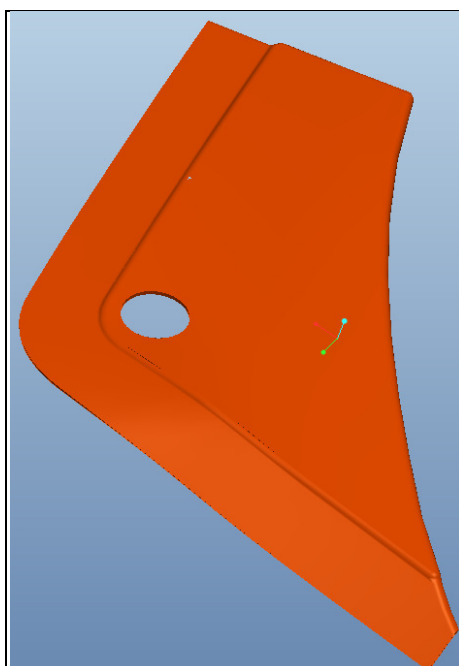
X = 55 mm
Y = 85 mm
Z = 60 mm
Weight = 0.2 Kg
Thickness = 2.5 mm
Material= 11300.20
CSN 42 5302.21

17. 442 9 0257 029 4 - Front cover plate part Right



X = 141 mm
Y = 135 mm
Z = 19 mm
Weight = 0.12 Kg
Thickness = 0.9 mm
Material= 11305.21
CSN 42 6312.32

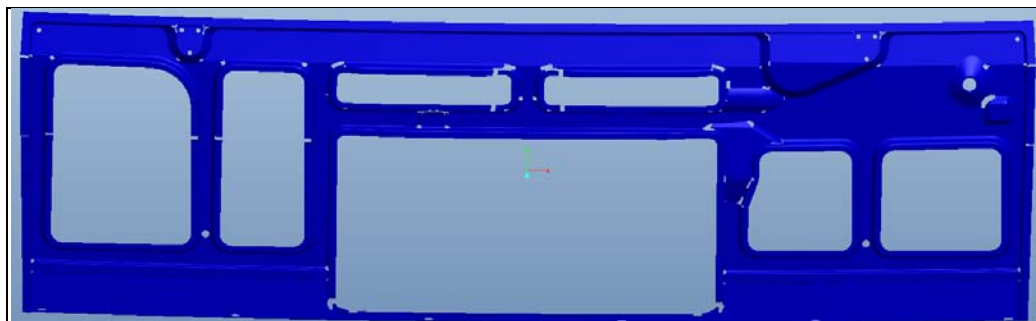
18. 442 9 0257 030 4 - Front cover plate part Left



X = 141 mm
Y = 135 mm
Z = 19 mm
Weight = 0.12 Kg
Thickness = 0.9 mm
Material= 11305.21
CSN 42 6312.32

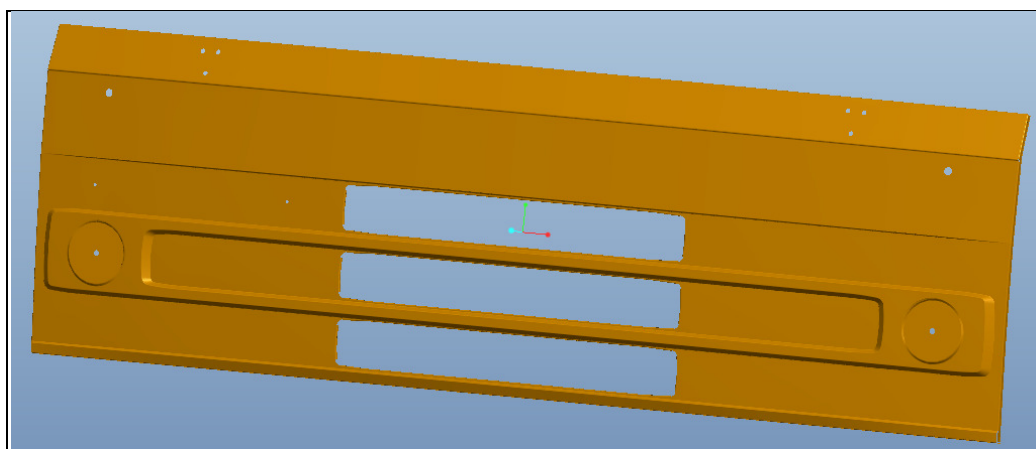
Cabin stamped parts details

19. 442 9 0257 033 4 - Inner front cover



X = 2100 mm
Y = 649 mm
Z = 148 mm
Weight = 5.95 Kg
Thickness = 0.9 mm
Material= 11305.21
CSN 42 6312.32

20. 442 9 0257 039/038 4 - Front cover plate



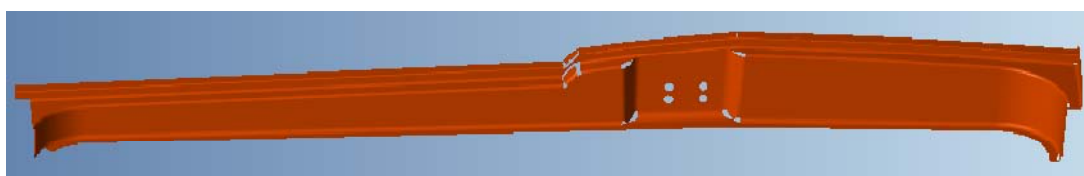
X = 2106 mm
Y = 650.5 mm
Z = 100 mm
Weight = 9.30 Kg
Thickness = 0.9 mm
Material= 11305.21
CSN 42 6312.32

21. 442 9 0361 001 4 - Front door frame at lock-Left



X = 1338 mm
Y = 149 mm
Z = 113 mm
Weight = 2.67 Kg
Thickness = 2 mm
Material= 11300.20
CSN 42 5302.2

22. 442 9 0361 004 4 - Front door frame at lock-Right



X = 1338 mm
Y = 149 mm
Z = 113 mm
Weight = 2.50 Kg
Thickness = 2 mm
Material= 11300.20
CSN 42 5302.2

Cabin stamped parts details

23. 442 9 0364 001 4 - Outer sidewall middle Left



X = 1340 mm

Y= 602 mm

Z = 114 mm

Weight = 5.0 Kg

Thickness = 1 mm

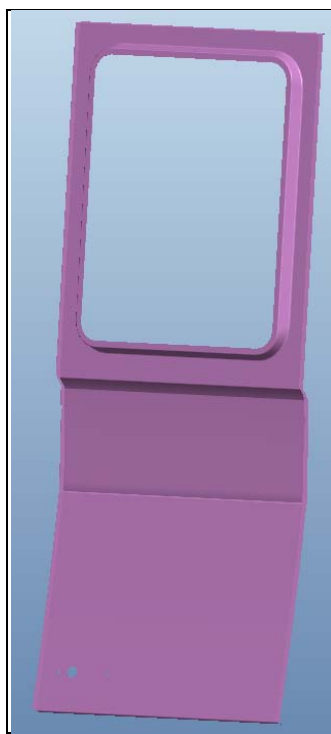
Material= 11305.21

CSN 42 6312.32

Equivalent IS std : IS : 513 - 86/94

Grade: EDD (Cold rolled Extra deep drawn sheet)

24. 442 9 0364 023 4 - Outer sidewall middle Right



X = 1340 mm

Y= 602 mm

Z = 114 mm

Weight = 5.0 Kg

Thickness = 1 mm

Material= 11305.21

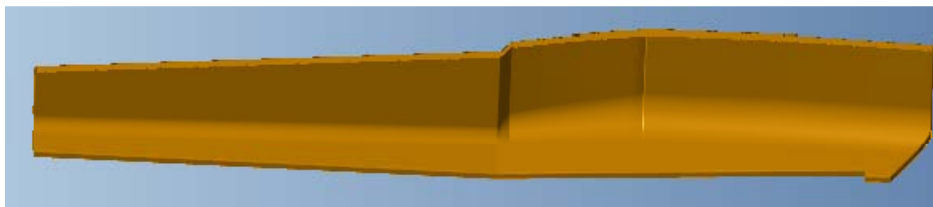
CSN 42 6312.32

Equivalent IS std : IS : 513 - 86/94

Grade: EDD (Cold rolled Extra deep drawn sheet)

Cabin stamped parts details

25. 442 9 0462 003 4 - Rear sidewall middle cabin left



X = 1340 mm

Y= 140 mm

Z = 207 mm

Weight = 2.26 Kg

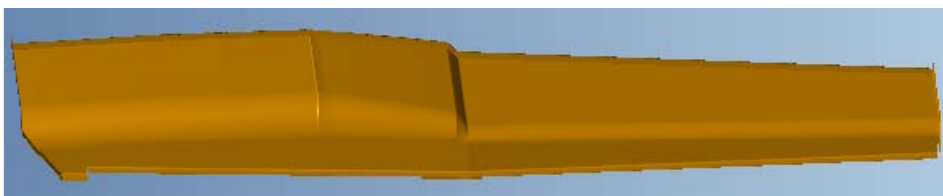
Thickness = 0.9 mm

Material= 11305.21

CSN 42 6312.32

Equivalent IS std : IS : 513 -
86/94 Grade: EDD (Cold
rolled Extra deep drawn
sheets)

26. 442 9 0462 0029 4 - Rear sidewall middle cabin Right



X = 1340 mm

Y= 140 mm

Z = 207 mm

Weight = 2.26 Kg

Thickness = 0.9 mm

Material= 11305.21

CSN 42 6312.32

Equivalent IS std : IS : 513
- 86/94 Grade: EDD (Cold
rolled Extra deep drawn
sheets)